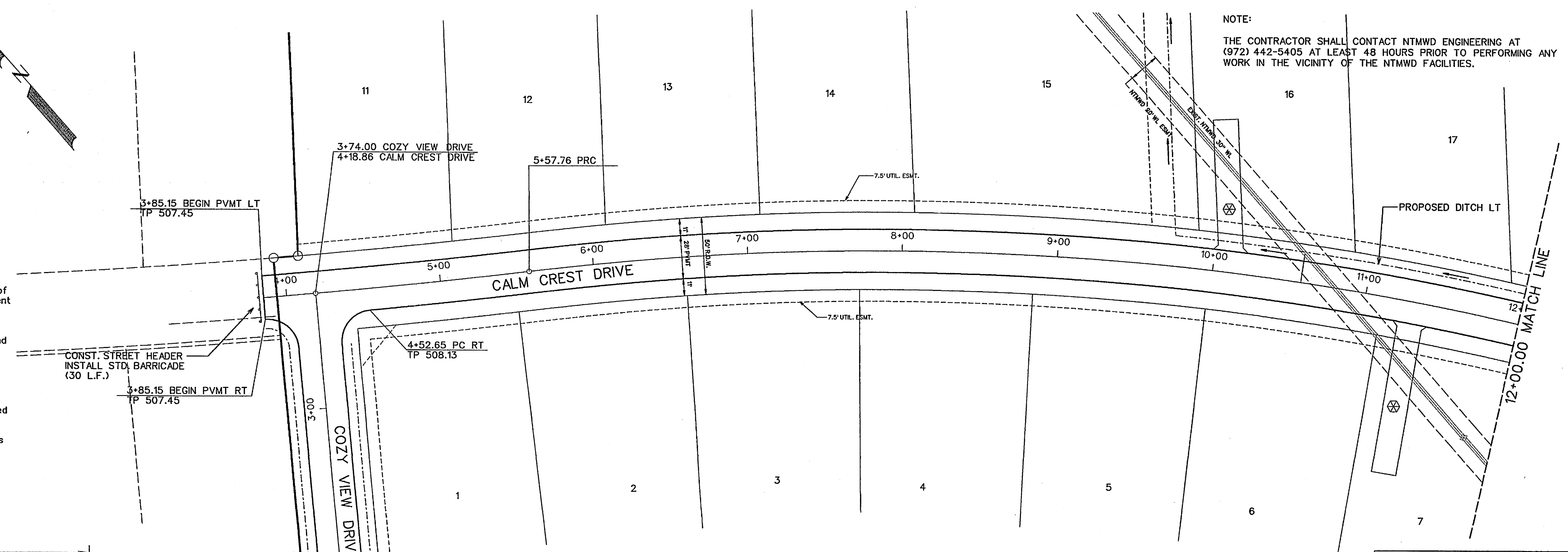


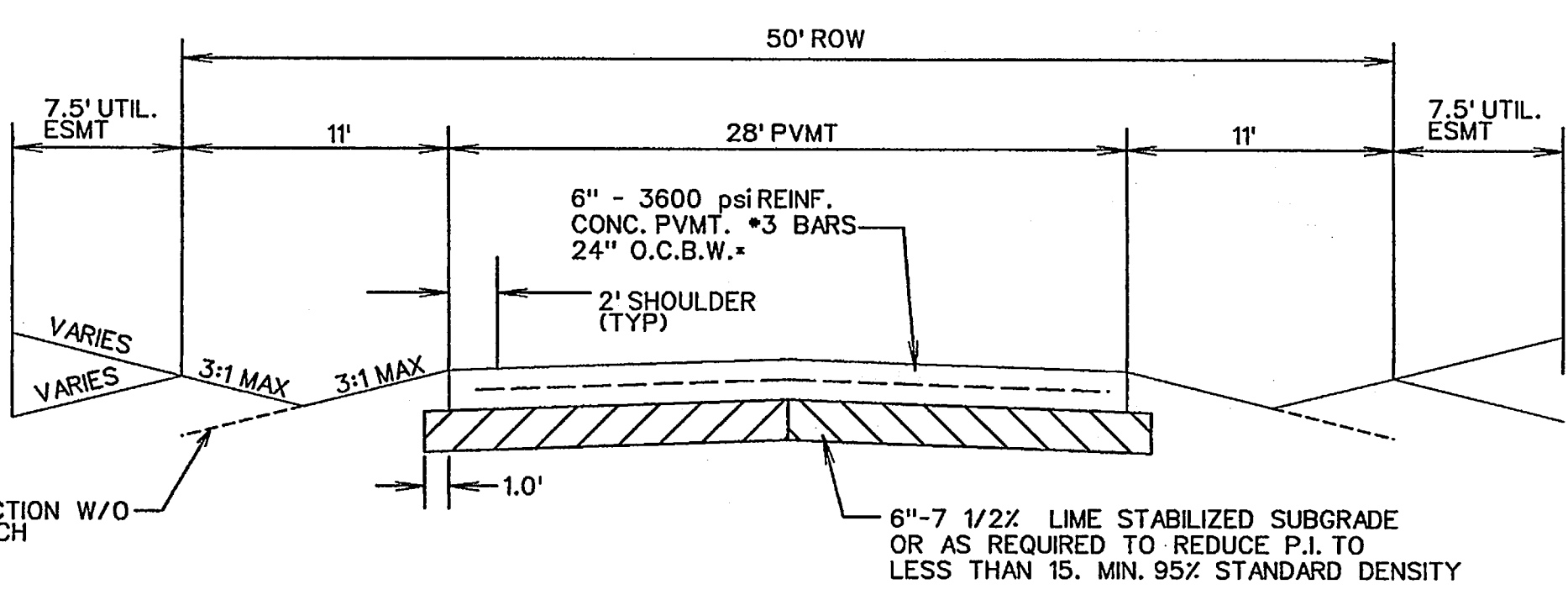
SCALE: 1" = 40'

**NOTES FOR CONSTRUCTION WITH THE NORTH TEXAS MUNICIPAL WATER DISTRICT EASEMENT**

- A. North Texas Municipal Water District's (NTMWD's) easement is located within the limits of construction.
- B. Operation of heavy earthmoving equipment, compaction equipment or heavy construction equipment, such as concrete trucks, shall be restricted to specific crossing points across NTMWD easements, as approved by the NTMWD. The crossing shall be designated and verified to provide a minimum of five-feet of cover.
- C. To assure that placing of significant loads over the NTMWD pipeline does not damage the existing pipeline, no materials shall be stockpiled on the NTMWD easement, without authorization from the NTMWD. If the contractor desires to use NTMWD's easement for stockpile of materials, contact NTMWD's Engineering Department at (972) 442-5405 so your plans for use of NTMWD's easement can be reviewed.
- D. A minimum of three feet separation between the bottom of the pavement and top of NTMWD pipeline is required. In addition, if separation between the bottom of the pavement and the top of the pipeline is less than 3.5 feet, a thickened pavement section is required.
- E. Crossing of the NTMWD easement with other utilities, such as TV cable, phone, gas and electric, shall be coordinated with the NTMWD to avoid damage to the NTMWD facilities.
- F. Outdoor lighting, landscaping, screening walls or other facilities shall not be installed in NTMWD easements without written approval of the NTMWD.
- G. Unless otherwise shown or required a minimum of one-foot clearance shall be provided for all utilities crossing the NTMWD pipelines.
- H. The contractor shall contact NTMWD Engineering at (972) 442-5405 at least 48 hours prior to performing any work in the vicinity of the NTMWD facilities.



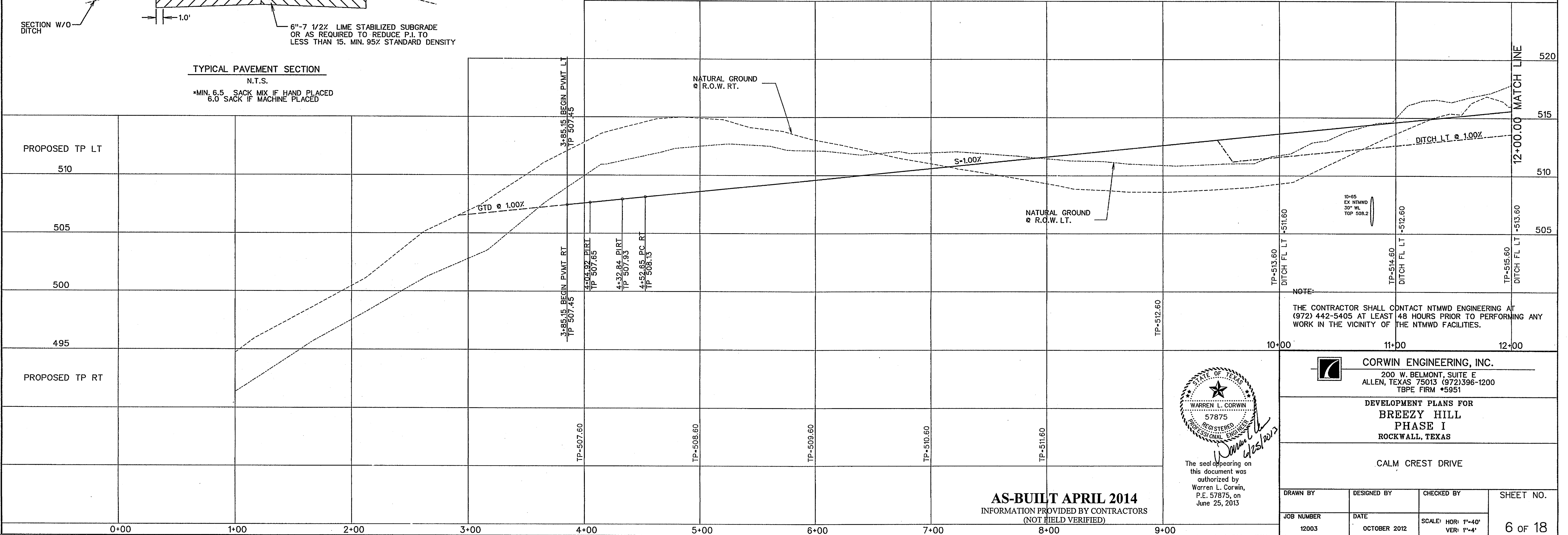
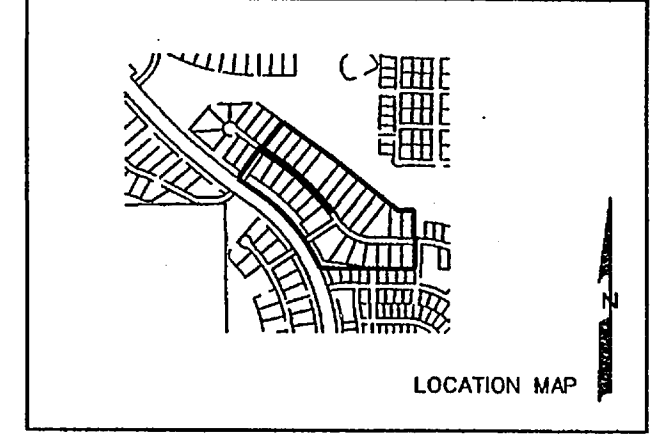
NOTE:  
THE CONTRACTOR SHALL CONTACT NTMWD ENGINEERING AT (972) 442-5405 AT LEAST 48 HOURS PRIOR TO PERFORMING ANY WORK IN THE VICINITY OF THE NTMWD FACILITIES.



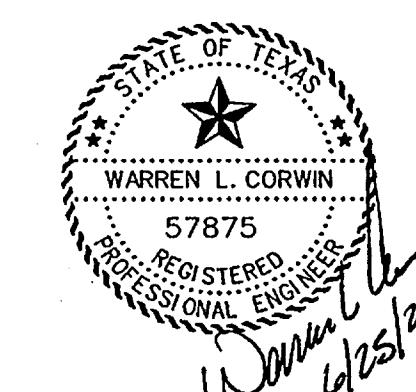
**TYPICAL PAVEMENT SECTION**  
N.T.S.  
\*MIN. 6.5 SACK MIX IF HAND PLACED  
6.0 SACK IF MACHINE PLACED

NOTE: DRIVEWAY LOCATION APPROVAL NEEDED BY NTMWD.

NOTE: CONTRACTOR SHALL VERIFY ALL EXISTING UTILITIES PRIOR TO CONSTRUCTION. EXISTING UTILITY LOCATION AND ELEVATION ARE BASED ON AS-BUILT DRAWINGS AND MAY DIFFER IN ACTUAL LOCATION AND ELEVATION.



NOTE:  
THE CONTRACTOR SHALL CONTACT NTMWD ENGINEERING AT (972) 442-5405 AT LEAST 48 HOURS PRIOR TO PERFORMING ANY WORK IN THE VICINITY OF THE NTMWD FACILITIES.



The seal appearing on this document was authorized by Warren L. Corwin, P.E. 57875, on June 25, 2013

**AS-BUILT APRIL 2014**  
INFORMATION PROVIDED BY CONTRACTORS  
(NOT FIELD VERIFIED)

**CORWIN ENGINEERING, INC.**  
200 W. BELMONT, SUITE E  
ALLEN, TEXAS 75013 (972)396-1200  
TBPE FIRM #5951

DEVELOPMENT PLANS FOR  
**BREEZY HILL**  
PHASE I  
ROCKWALL, TEXAS

CALM CREST DRIVE

DRAWN BY	DESIGNED BY	CHECKED BY	SHEET NO.
JOB NUMBER	DATE	SCALE: HOR: 1"=40' VER: 1"=4'	6 OF 18
12003	OCTOBER 2012		