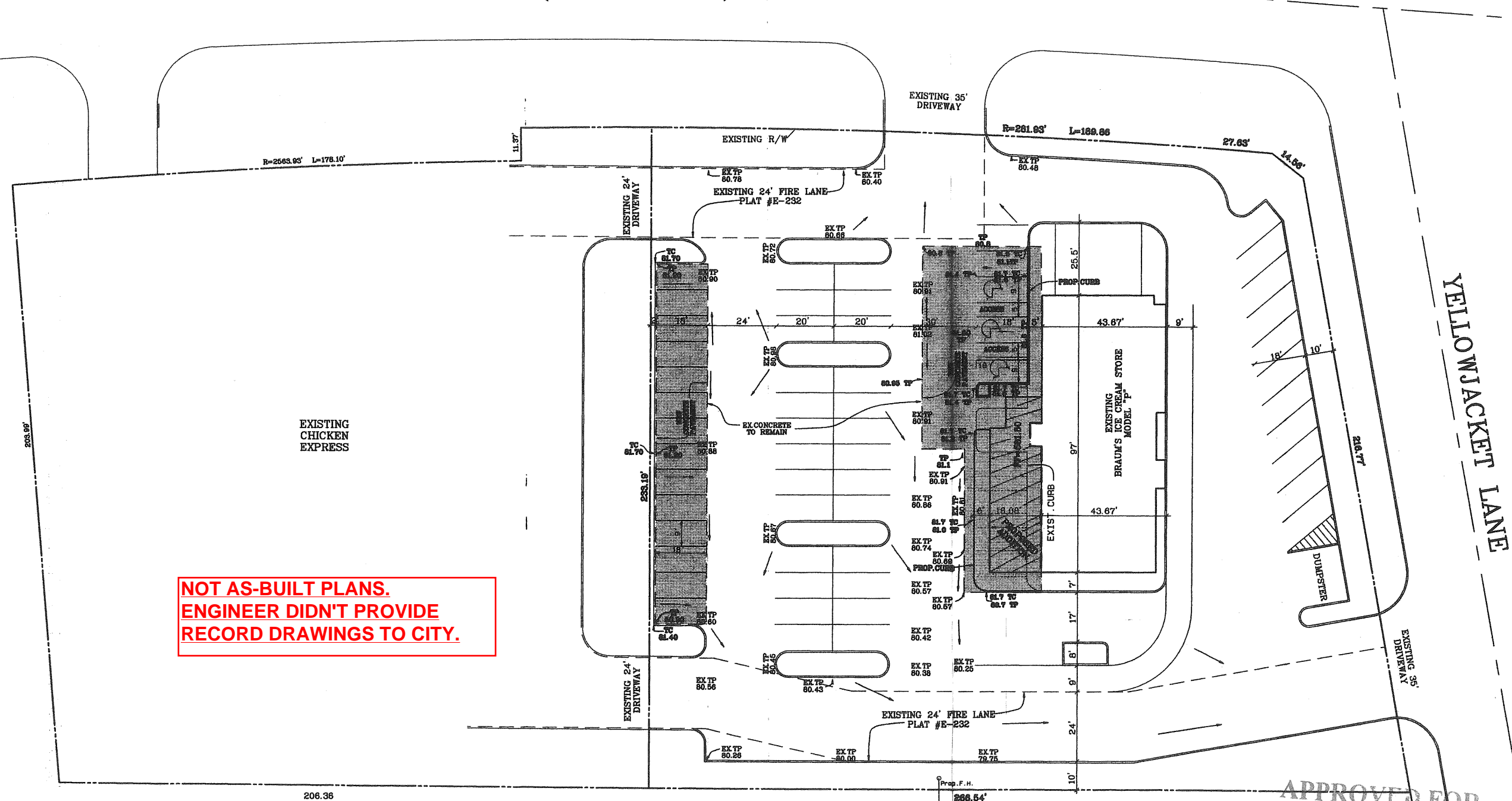


NOTE:
Braum's Addition Expansion Site Plan SP2006-024
was approved by City Council on 8/21/2006.

STATE HIGHWAY NO. 205
(S. GOLIAD)



**NOT AS-BUILT PLANS.
ENGINEER DIDN'T PROVIDE
RECORD DRAWINGS TO CITY.**

SCALE 1"=20'
48 PARKING SPACES(BRAUMS EXISTING)
56 PARKING SPACES(PROPOSED)

Benchmark:
C = Cut in Nose of Median on Yellowjacket Lane
25± East of Southeast Property Corner of Project.
Elev. = 573.48
□ = Cut in Top of Curb at North Corner of
Braum's Parking Lot.
Elev. = 581.30

- LEGEND
- FLOW ARROW
 - NEW CONSTRUCTION
 - TP TOP OF PAVEMENT
 - TC TOP OF CURB
 - EX. EXISTING
 - PROP. PROPOSED

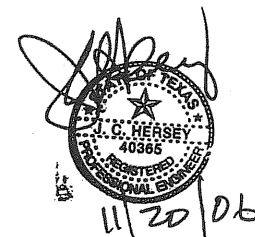
Proposed Pavement to be 5" Thick
3600 psi Conc. with #4 rebar @ 20"
centers both ways.

APPROVED FOR
CONSTRUCTION

MAR 1 2007

City of Rockwall Engineering Dept.
City Engineer: *CA-7*

1820 S. GOLIAD,
ROCKWALL, TEXAS



HERSEY & ASSOCIATES
CONSULTING ENGINEERS - SURVEY & PLANNING
9617 WALNUT HULL LANE - DALLAS, TEXAS 75248
(214) 545-8888 FAX: (214) 545-5644



GRADING &
PAVING PLAN

LOT 1A, BLOCK A
BRAUM'S ADDITION
CITY OF ROCKWALL
ROCKWALL COUNTY, TEXAS

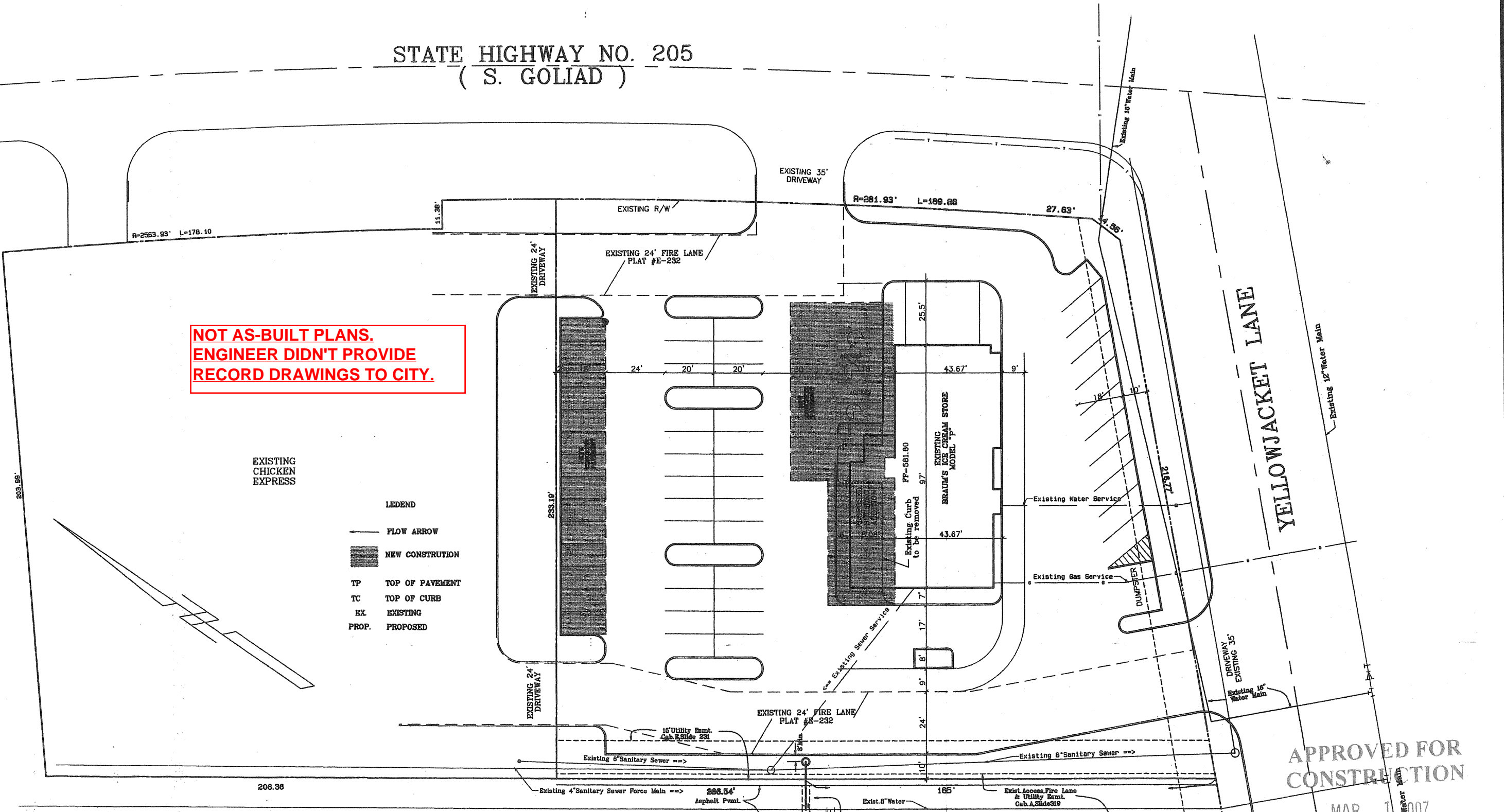
DRAWN BY:
DATE: NOVEMBER 17, 2006
DRAWING FILE:
JOB NO: 2304.B
SCALE: 1"=20'
LAYOUT:

STATE HIGHWAY NO. 205
(S. GOLIAD)

**NOT AS-BUILT PLANS.
ENGINEER DIDN'T PROVIDE
RECORD DRAWINGS TO CITY.**

EXISTING CHICKEN EXPRESS

- LEGEND
- FLOW ARROW
 - ▨ NEW CONSTRUCTION
 - TP TOP OF PAVEMENT
 - TC TOP OF CURB
 - EX EXISTING
 - PROP. PROPOSED



THE CONTRACTOR SHALL BE RESPONSIBLE FOR VERIFYING EXISTING GROUND GRADES PRIOR TO COMMENCING CONSTRUCTION AND THE DEPTH AND LOCATIONS OF AND PROTECTING ALL EXISTING SERVICE LINES, OR OTHER PROPERTY CROSSED OR EXPOSED BY HIS CONSTRUCTION OPERATIONS. WHERE EXISTING UTILITIES OR SERVICE LINES ARE CUT, BROKEN OR DAMAGED, THE CONTRACTOR SHALL REPLACE OR REPAIR THE UTILITIES OR SERVICE LINES WITH THE SAME TYPE OF ORIGINAL MATERIAL AND CONSTRUCTION, OR BETTER, UNLESS OTHERWISE SHOWN OR NOTED ON THE PLANS, AT HIS OWN COST AND EXPENSE. THE CONTRACTOR SHALL IMMEDIATELY NOTIFY THE OWNER OF THE DAMAGED UTILITY OR SERVICE LINE. HE SHALL COOPERATE WITH THE OWNERS OF ALL UTILITIES TO LOCATE EXISTING UNDERGROUND FACILITIES AND IMMEDIATELY NOTIFY THE ENGINEER AT ONCE OF ANY CONFLICTS IN GRADES AND ALIGNMENT.

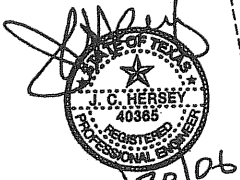
Pebblebrook Apartments
Cab. A, Slide 319

Install:
1-6" x 6" Tapping Sleeve
1-6" Valve
1-Fire Hydr.
By City of Rockwall
STANDARDS & SPECIFICATIONS

Saw Cut-Remove & Replace 3.5 Sq. Yd's of Asphalt Pmt.

CAUTION!
Contact DIG-TESS at 1-800-344-3877
48 Hours Prior to Construction, For Location of Utilities

BENCH MARKS:
"□" out on the nose of median on Yellowjacket Lane
25'+/- east of southeast property corner of project.
Elev. = 573.48
"□" out on top of curb at northeast corner of Braum's parking lot.
Elev. = 581.30



1820 S. GOLIAD
ROCKWALL, TEXAS

APPROVED FOR CONSTRUCTION
MAR 1 2007
City of Rockwall Engineering Dept.
City Engineer:

SCALE 1"=20'
48 PARKING SPACES (BRAUMS EXISTING)
56 PARKING SPACES (PROPOSED)

HERSEY & ASSOCIATES
CONSULTING ENGINEERS • SURVEY • PLANNERS
9817 WALNUT HILL LANE • DALLAS, TEXAS 75243
CALL 972-988-2222 FAX: 972-988-2224



UTILITY PLAN

LOT 1A, BLOCK A
BRAUM'S ADDITION
CITY OF ROCKWALL,
ROCKWALL COUNTY, TEXAS

DATE: November 17, 2004
DRAWING FILE:
JOB NO: 2304.B
SCALE: 1"=20'
LAYOUT: