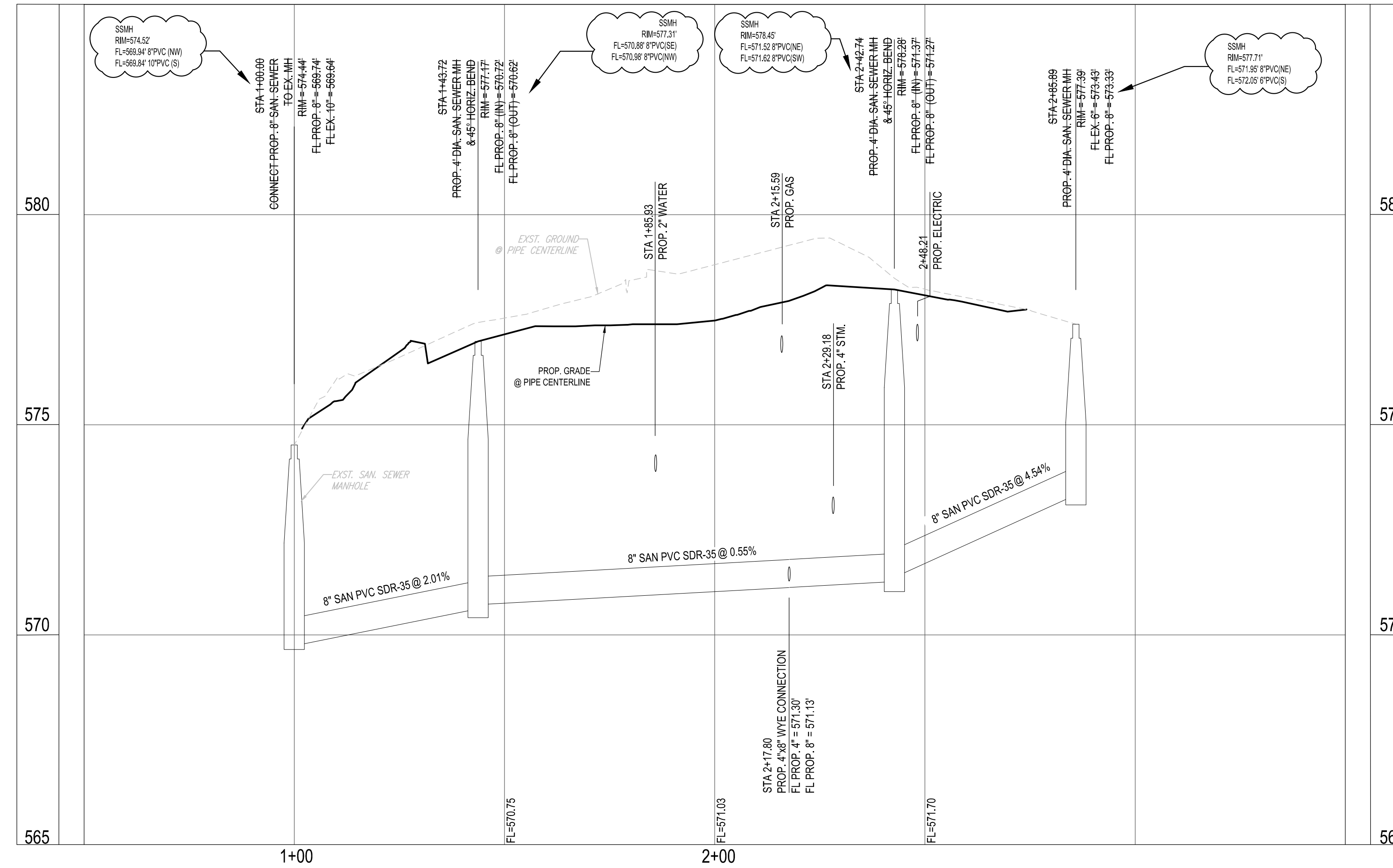


SANITARY SEWER PROFILE



BOHLER ENGINEERING

STATE OF TEXAS
 DEAN O. CARDWELL
 115432
 LICENSED PROFESSIONAL ENGINEER
 1/16/20

THE INFORMATION CONTAINED ON THIS DRAWING IS THE SOLE PROPERTY OF BOHLER ENGINEERING. IT IS TO BE USED ONLY FOR THE PROJECT AND SITE SPECIFICALLY IDENTIFIED HEREON. NO PART OF THIS DRAWING IS TO BE REPRODUCED OR TRANSMITTED IN ANY FORM OR BY ANY MEANS, ELECTRONIC OR MECHANICAL, INCLUDING PHOTOCOPYING, RECORDING, OR BY ANY INFORMATION STORAGE AND RETRIEVAL SYSTEM.

REVISIONS

REV	DATE	COMMENT	BY
1	3/18/19	DOMESTIC WATER REVISION	MJH
2	4/19/19	TAS REVIEW COMMENTS	MJH

811

KNOW WHAT'S BELOW
 ALWAYS CALL 811
BEFORE YOU DIG

It's fast. It's free. It's the law.

ASBUILT RECORD DRAWING

PROJECT No.: TD180033
 DRAWN BY: MJH
 CHECKED BY: DOC
 DATE: 02/25/2019
 SCALE: 1" = 10'
 CAD I.D.: UPO

CONSTRUCTION DOCUMENTS

FOR

brakes plus

LOCATION OF SITE
 1902 S. GOLIAD ST
 LOTS 1 & 2, BLOCK A, BILLY PEOPLES ADDITION NO. 1
 ROCKWALL, TX 75087
 ROCKWALL COUNTY

BOHLER ENGINEERING

6017 MAIN STREET
 FRISCO, TX 75034
 Phone: (469) 458-7300
 TX@BohlerEng.com

STATE OF TEXAS
 DEAN O. CARDWELL
 115432
 LICENSED PROFESSIONAL ENGINEER
 1/16/20

SHEET TITLE:
SANITARY SEWER PROFILE

SHEET NUMBER:
C-502

CASE NUMBER: SP2018-030