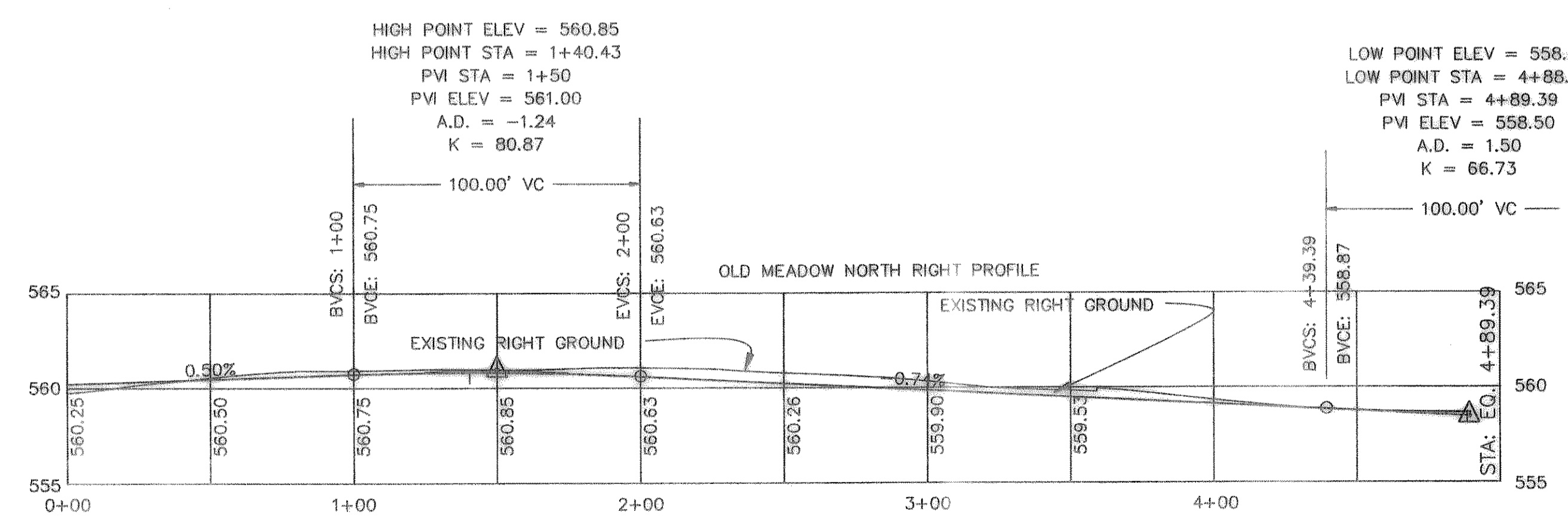
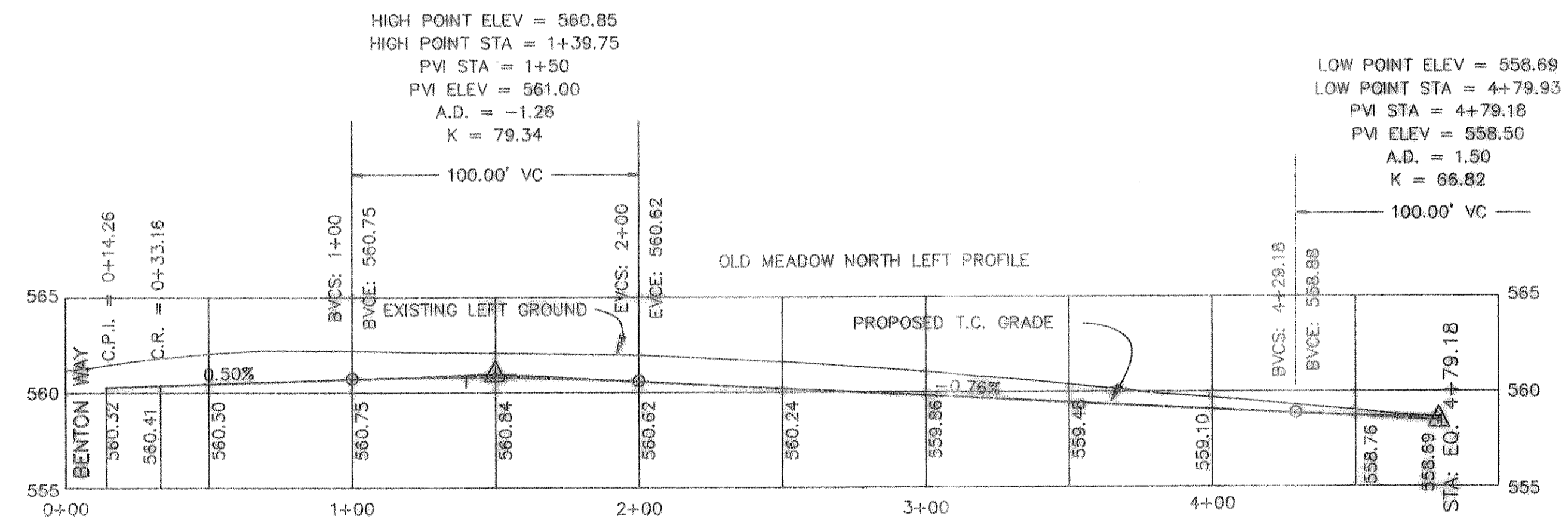
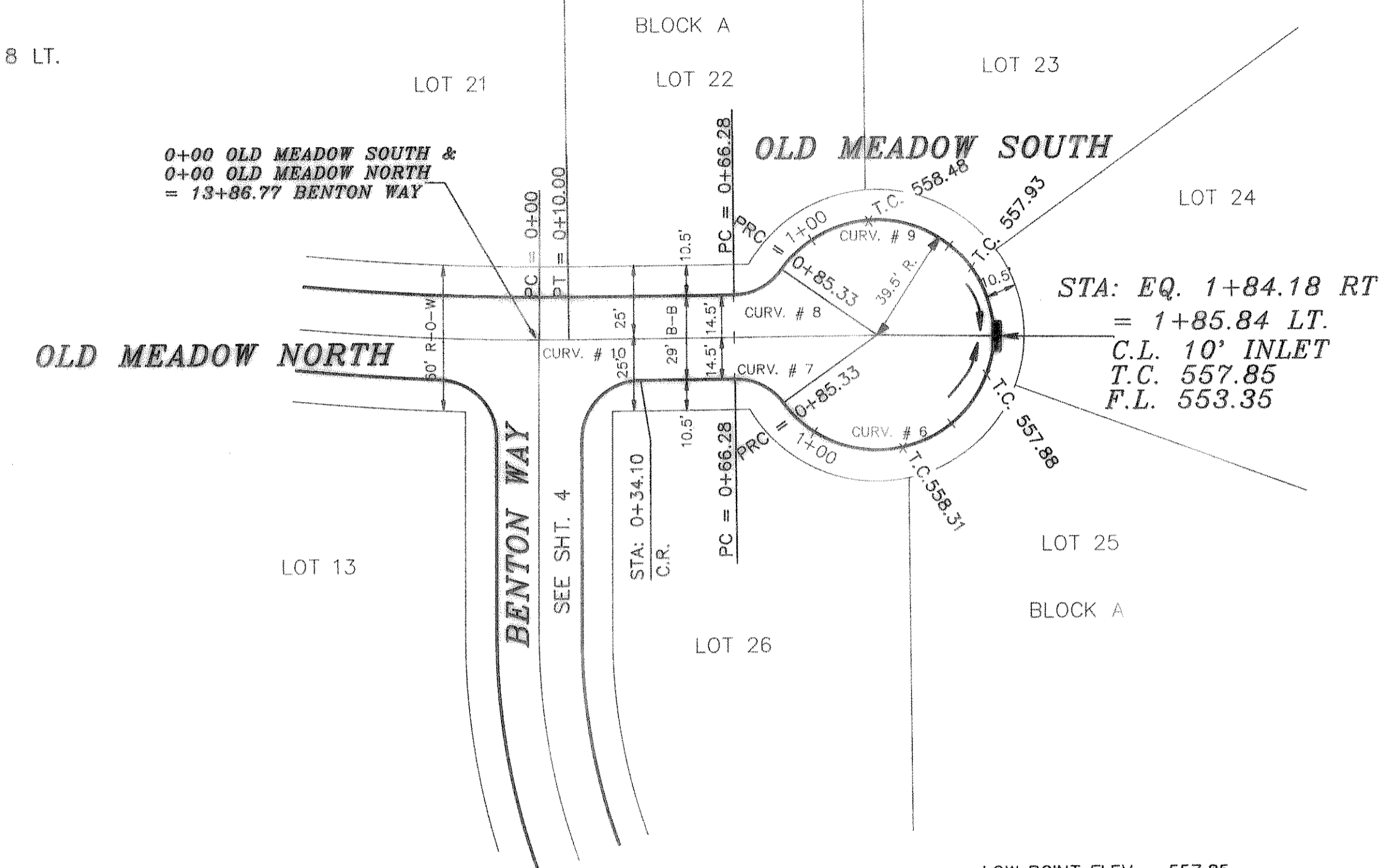
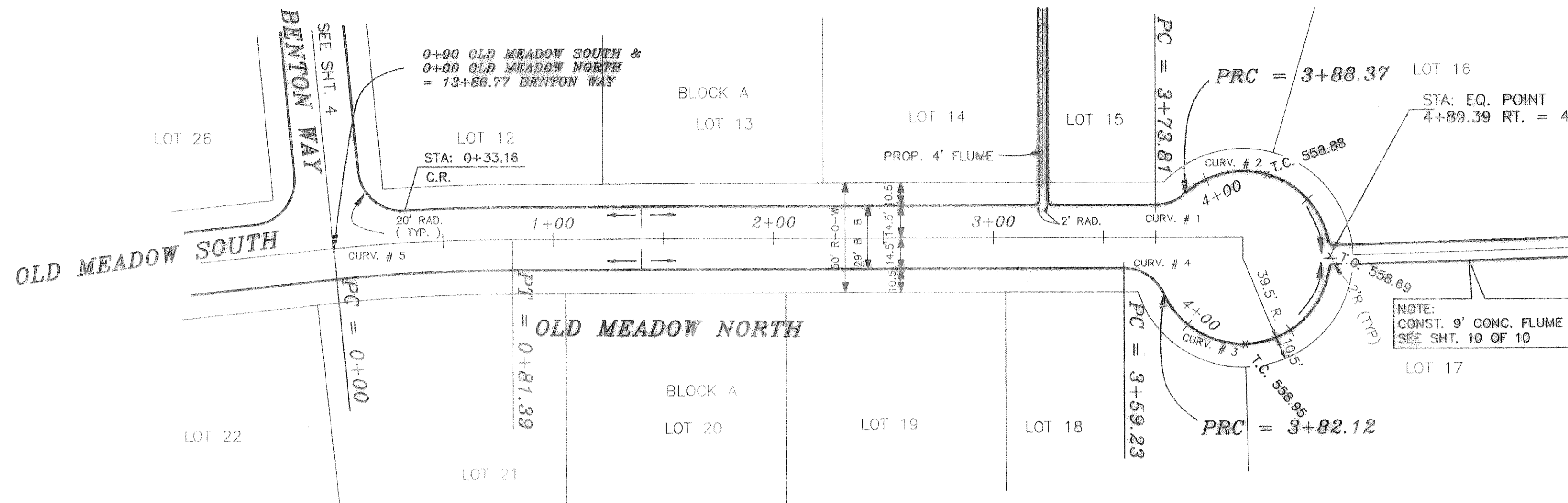
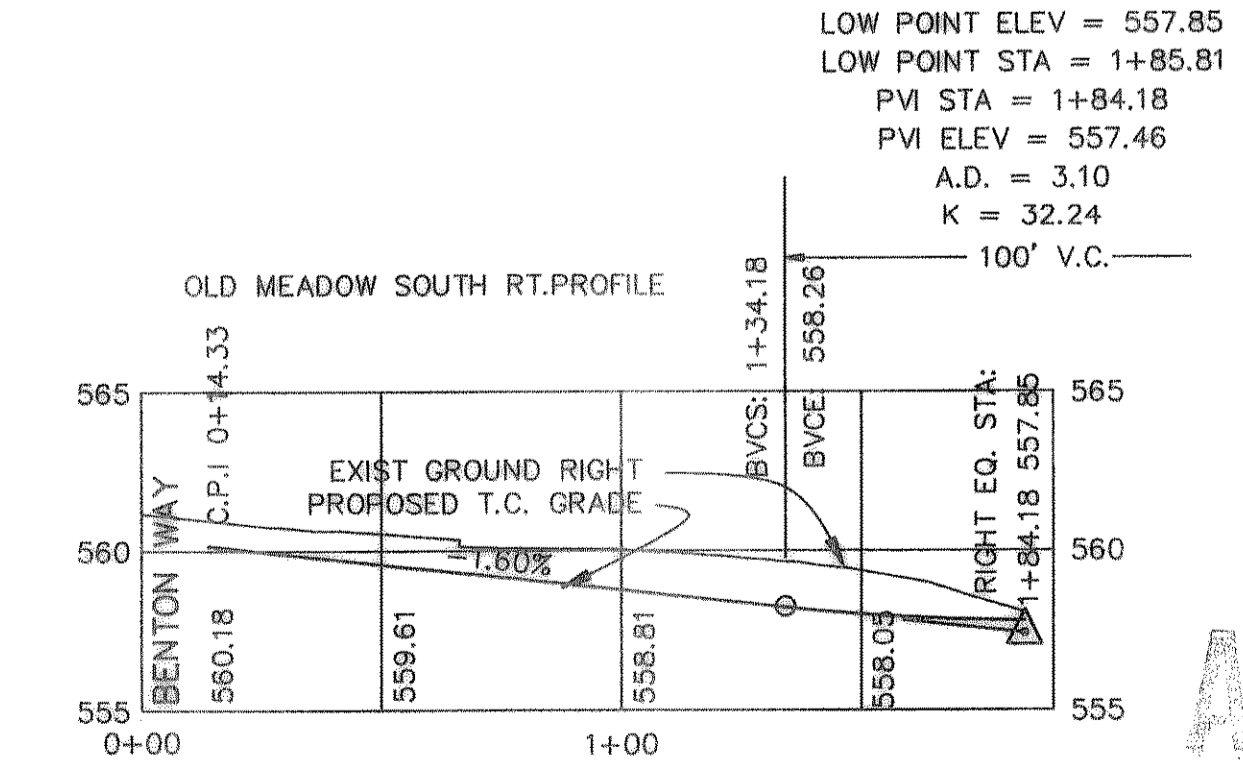
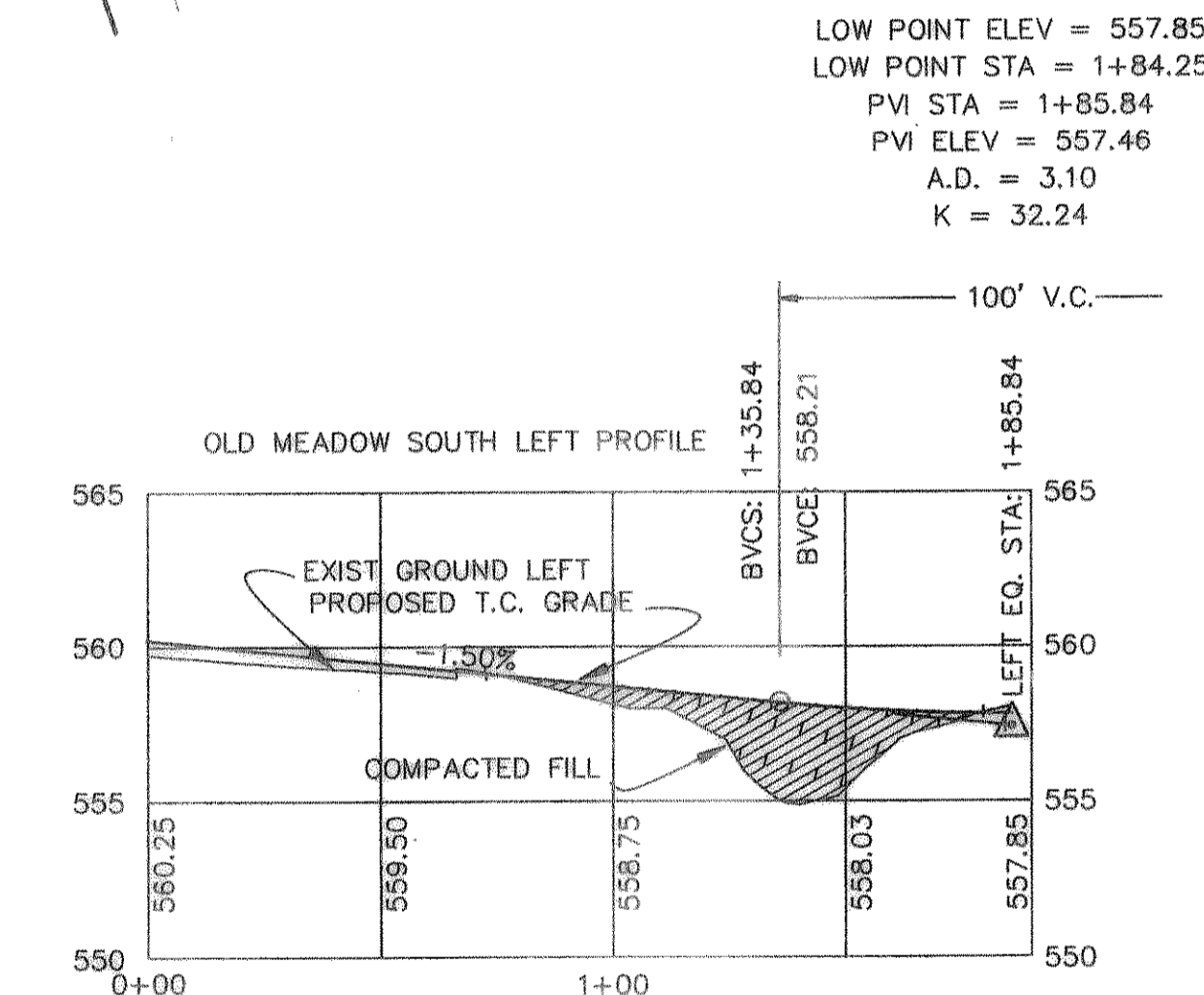


CURV.	RADIUS	LENGTH	TANGENT	CHORD	BEARING	DELTA
CURV. # 1	20.00'	14.56'	7.62'	14.24'	N15°19'17"W	41°43'23"
CURV. # 2	39.50'	90.81'	88.14'	72.09'	S29°40'43"W	131°43'24"
CURV. # 3	39.50'	107.26'	182.60'	77.21'	N06°39'57"W	155°35'17"
CURV. # 4	20.00'	22.89'	12.89'	21.66'	S38°20'03"W	65°35'17"
CURV. # 5	850.68'	81.39'	40.73'	81.36'	S02°47'57"W	05°28'56"
CURV. # 6	39.50'	98.81'	119.20'	74.99'	S17°43'10"E	143°19'50"
CURV. # 7	20.00'	19.05'	10.31'	18.33'	N26°39'55"E	54°33'41"
CURV. # 8	20.00'	19.05'	10.31'	18.33'	S27°53'45"E	54°33'41"
CURV. # 9	39.50'	100.51'	128.36'	75.51'	N17°43'10"E	145°47'31"
CURV. # 10	850.68'	10.00'	5.00'	10.00'	S00°18'43"E	00°40'25"



B.M. 60 D NAIL IN P.P. #2315/443/3612 LOCATED 85' +/- LT. OF PAV. STA. 0+41 BENTON WAY ELEVATION = 560.81

B.M. 60 D NAIL IN 15' ELM TREE 50' +/- S.E. OF N.E. CORNER OF LOT 8 & 9, BLOCK A. ELEVATION = 564.07



AS BUILT

4-96

HAROLD L. EVANS CONSULTING ENGINEER P.O. BOX 28855 2331 GUS THOMASSON ROAD, SUITE 102 DALLAS, TEXAS 75228, (214) 328-8133 10/26/94		PAVING PLAN OAK MEADOWS NORTH BENTON WOODS CITY OF ROCKWALL		SHEET NO. 6 / 10 JOB NO. 9417
REVISION DESCRIPTION	DATE 7/29/94	SCALE HORIZ 1"=40' VERT 1"=6'	DESIGN H.L.E.	DRAWN K.E.B.