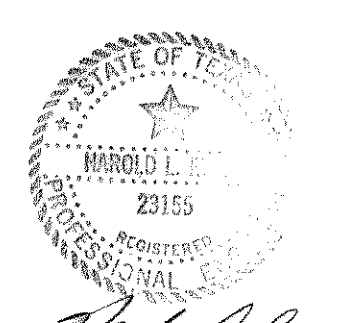
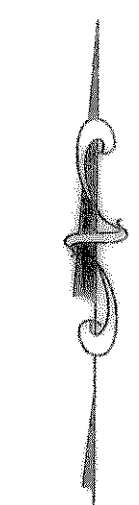


DRAINAGE TABLE

DRAINAGE AREA NO.	ACRES	T.C.	C	I 100 YR.	Q 100 YR.	SUM Q 100 YR.
1	2.40	10	0.5	9.8	11.76	
2	0.85	"	"	"	4.16	15.92
3	0.29	"	"	"	1.42	
4	2.29	"	"	"	11.22	
5	1.26	"	"	"	6.17	
6	0.74	"	"	"	3.63	
7	1.00	"	"	"	4.90	
8	1.21	"	"	"	5.93	
9	1.21	"	"	"	5.93	

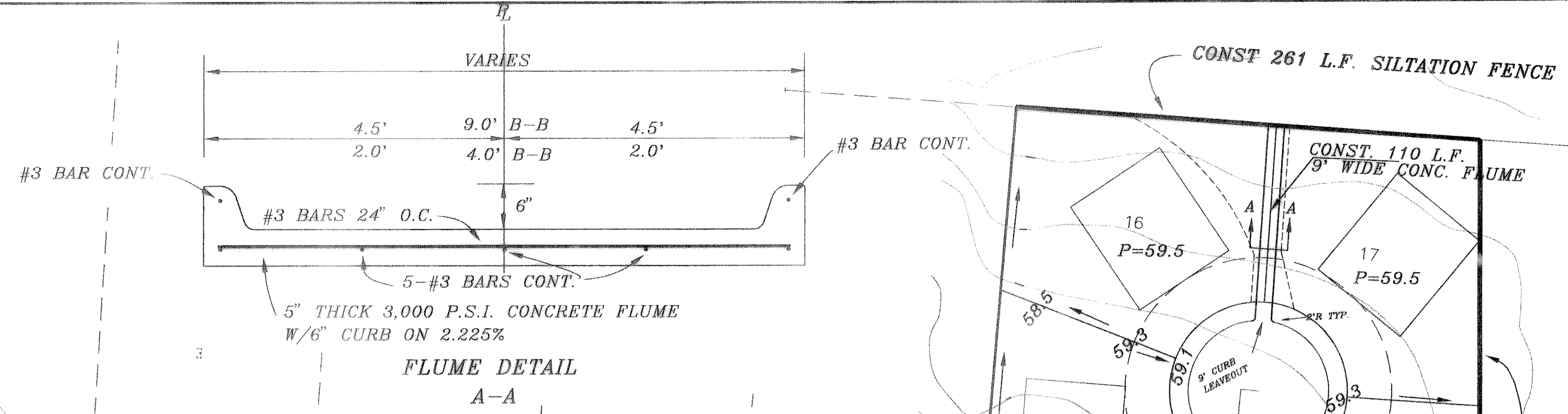


AS BUILT

Handwritten signature

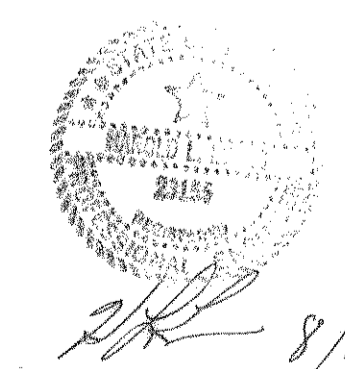
	HAROLD L. EVANS CONSULTING ENGINEER P.O. BOX 28355 2331 GUS THOMASSON ROAD, SUITE 102 DALLAS, TEXAS 75228. (214) 328-8133	DRAINAGE AREA MAP BENTON WOODS CITY OF ROCKWALL	SHEET NO. 8 10
REV. PER FIRST CITY REVIEW 10/26/94	DATE: 7/28/94 SCALE: 1" = 100' DESIGN: H.L.E. DRAWN:		JOB NO. 9417

F. M. 740 ≈ RIDGE ROAD



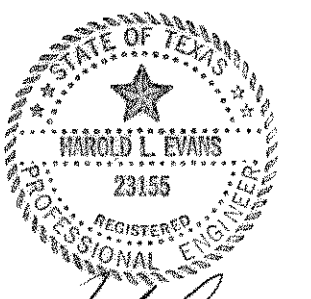
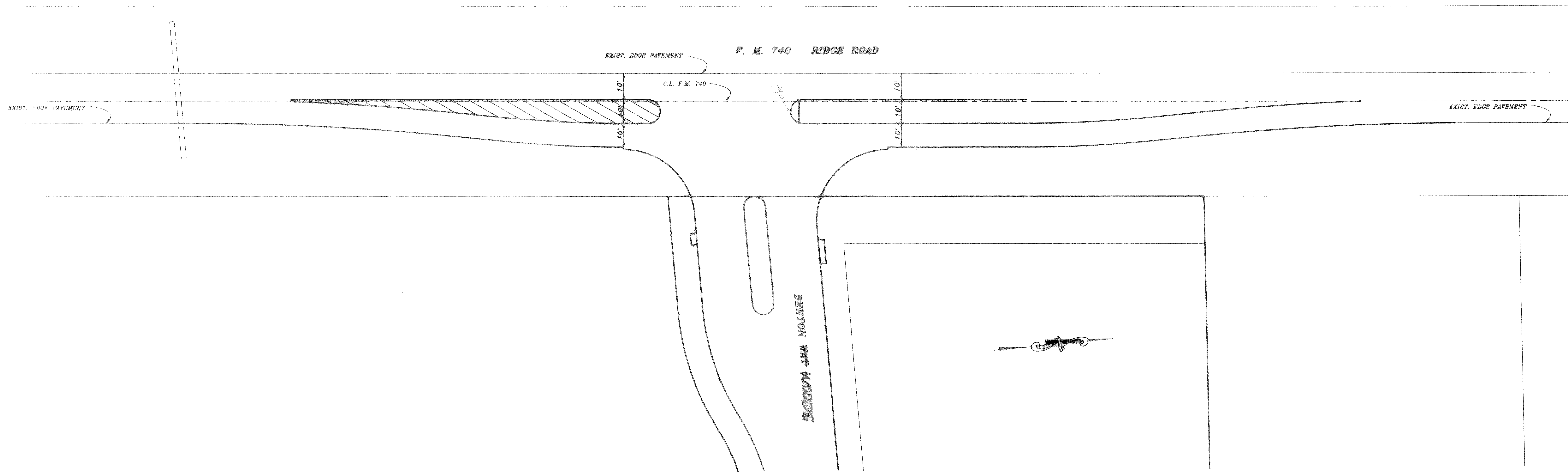
B.M.
60 D NAIL IN P.P. #2315/443/3512
LOCATED 35' +/- LT. OF PAV. STA. 0+41
BENTON WAY
ELEVATION = 560.81

B.M.
60 D NAIL IN 15' ELM TREE 59' +/-
S.E. OF N.E. CORNER OF LOT 8 & 9,
BLOCK A.
ELEVATION = 564.07



AS BUILT

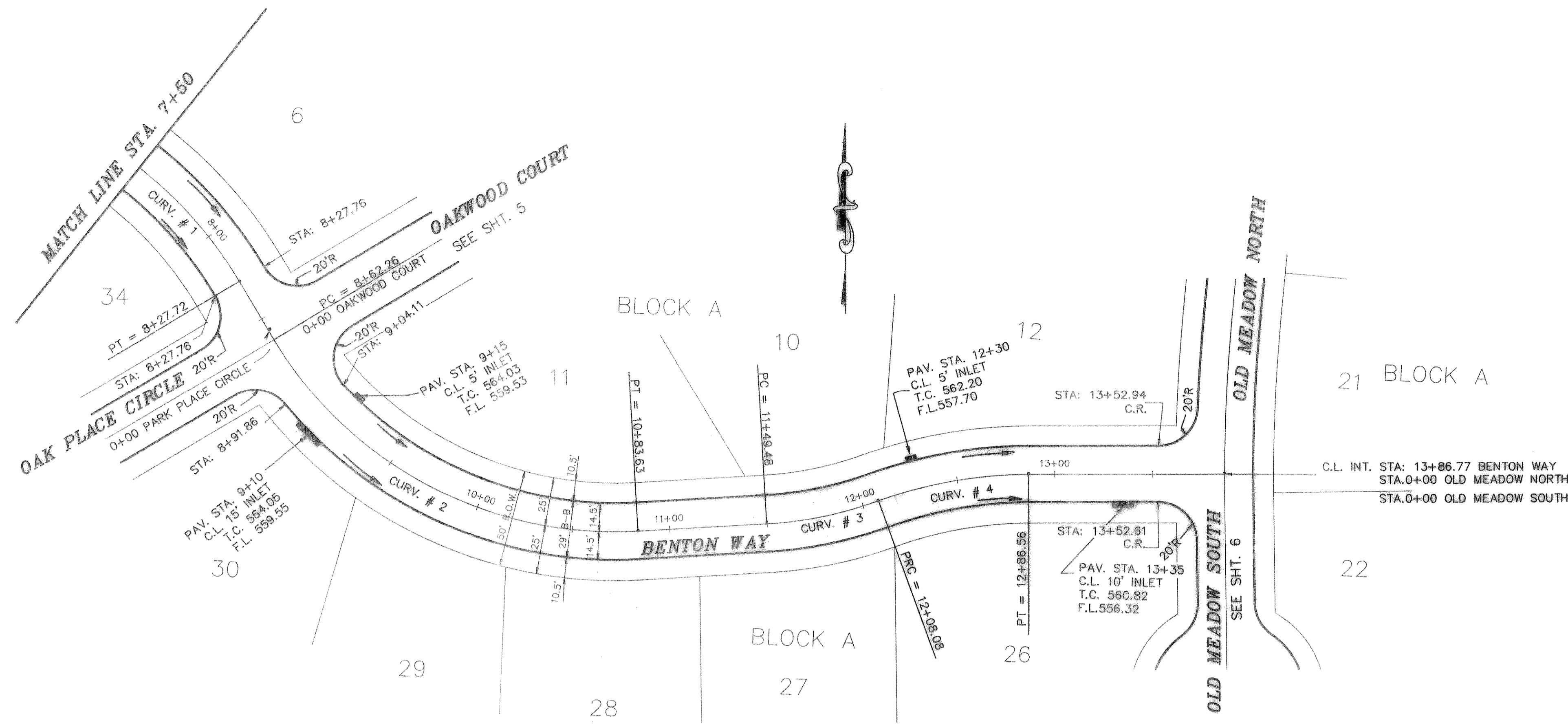
941780		HAROLD L. EVANS CONSULTING ENGINEER P.O. BOX 28355 2831 GUS THOMASSON ROAD, SUITE 102 DALLAS, TEXAS 75228, (214) 328-0133		LOT GRADING PLAN BENTON WOODS		SHEET NO. 10	
REV. PER CITY FIRST REVIEW		DATE 7/29/94		SCALE 1" = 50'		JOB NO. 9417	
REV. 8/30/95		DESIGN H.L.E.		DRAWN		CITY OF ROCKWALL	



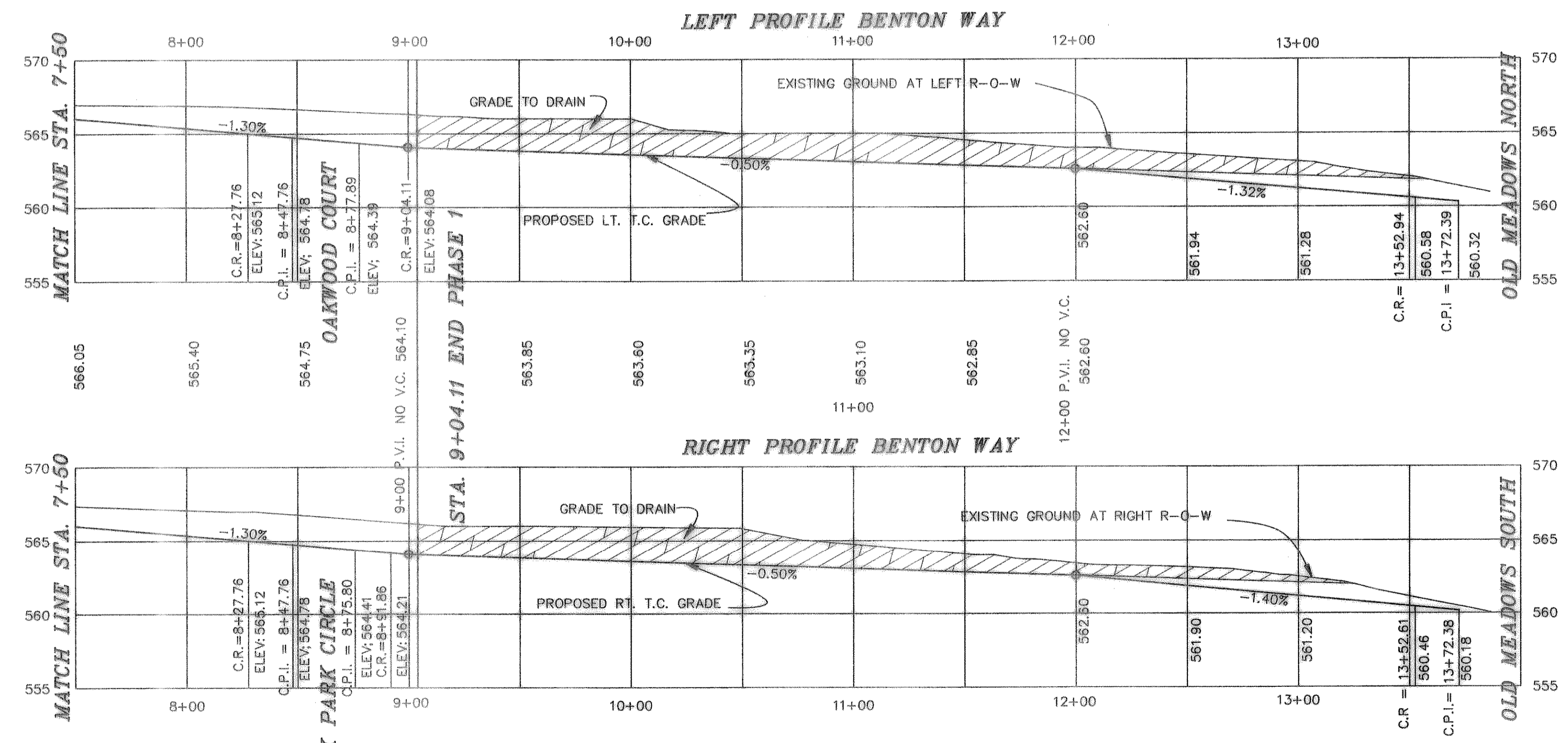
AS BUILT

H.L.E.
4-95

		HAROLD L. EVANS CONSULTING ENGINEER P.O. BOX 28355 2831 GUS THOMASSON ROAD, SUITE 102 DALLAS, TEXAS 75228, (214) 328-8133		SHEET NO. 3B 10	
		PROPOSED F.M. 740 PAV. TRANSITION STRIPING PLAN BENTON WOODS CITY OF ROCKWALL		JOB NO. 9417	
REVISION DESCRIPTION	DATE 12/12/94	SCALE 1" = 20'	DESIGN H.L.E.	DRAWN	



CURVE	RADIUS	LENGTH	TANGENT	CHORD	BEARING	DELTA
CURV. # 1	215.17'	77.72'	39.29'	77.30'	N41°03'54"W	20°41'42"
CURV. # 2	203.18'	221.37'	123.11'	210.58'	S61°55'44"E	62°25'22"
CURV. # 3	200.00'	58.60'	29.51'	58.39'	N78°27'58"E	16°47'14"
CURV. # 4	225.00'	78.48'	39.64'	78.09'	S80°03'55"W	19°59'08"



B.M.
60 D NAIL IN P.P. #2315/443/3512
LOCATED 35' +/- LT. OF PAV. STA. 9+41
BENTON WAY
ELEVATION = 560.01

B.M.
60 D NAIL IN 15' ELM TREE 59' +/-
S.E. OF N.E. CORNER OF LOT 8 & 9,
BLOCK A
ELEVATION = 564.07

AS BUILT

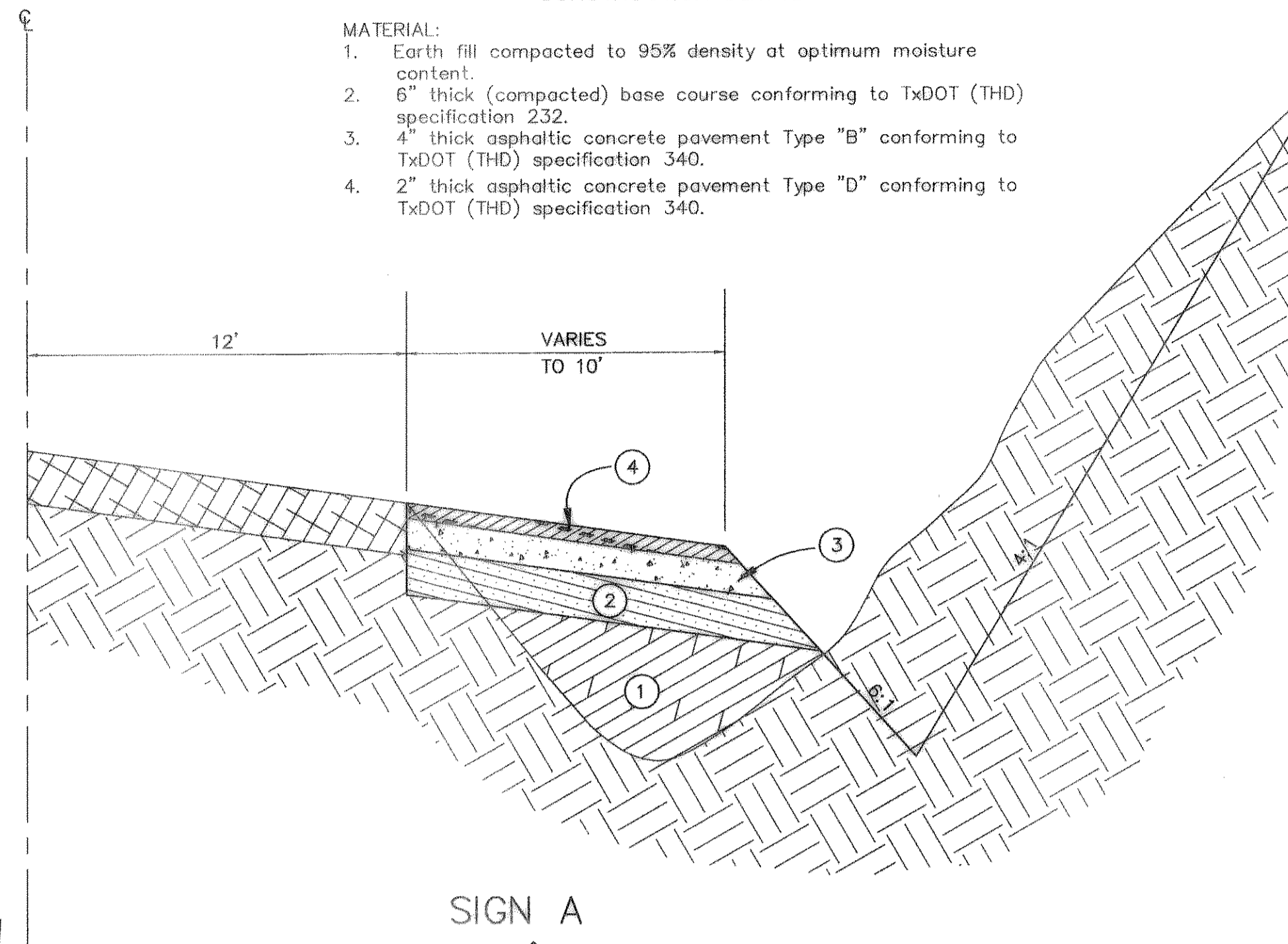
HAROLD L. EVANS
REGISTERED PROFESSIONAL ENGINEER
23155

4-95

HAROLD L. EVANS CONSULTING ENGINEER P.O. BOX 28855 2331 GUS THOMASSON ROAD, SUITE 102 DALLAS, TEXAS 75228, (214) 328-8183		PAVING PLAN BENTON WAY BENTON WOODS CITY OF ROCKWALL		SHEET NO. 4 10 JOB NO. 9417
REVISION DESCRIPTION REV. PER FIRST REVIEW	DATE 7/29/94	SCALE HORIZ 1" = 40' VERT 1" = 6'	DESIGN H.L.E.	DRAWN K.E.B.

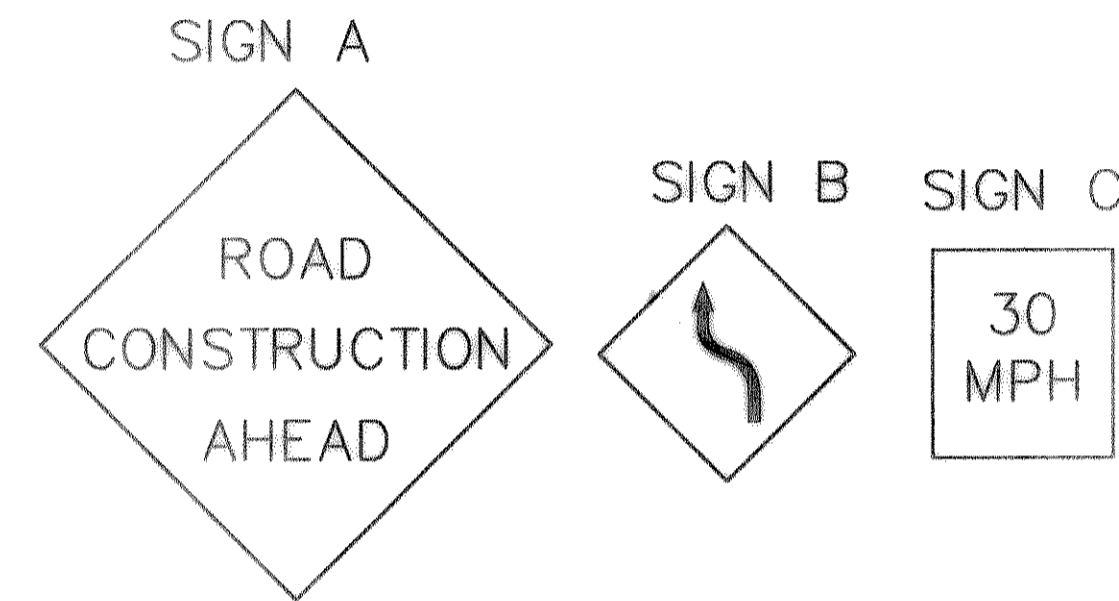
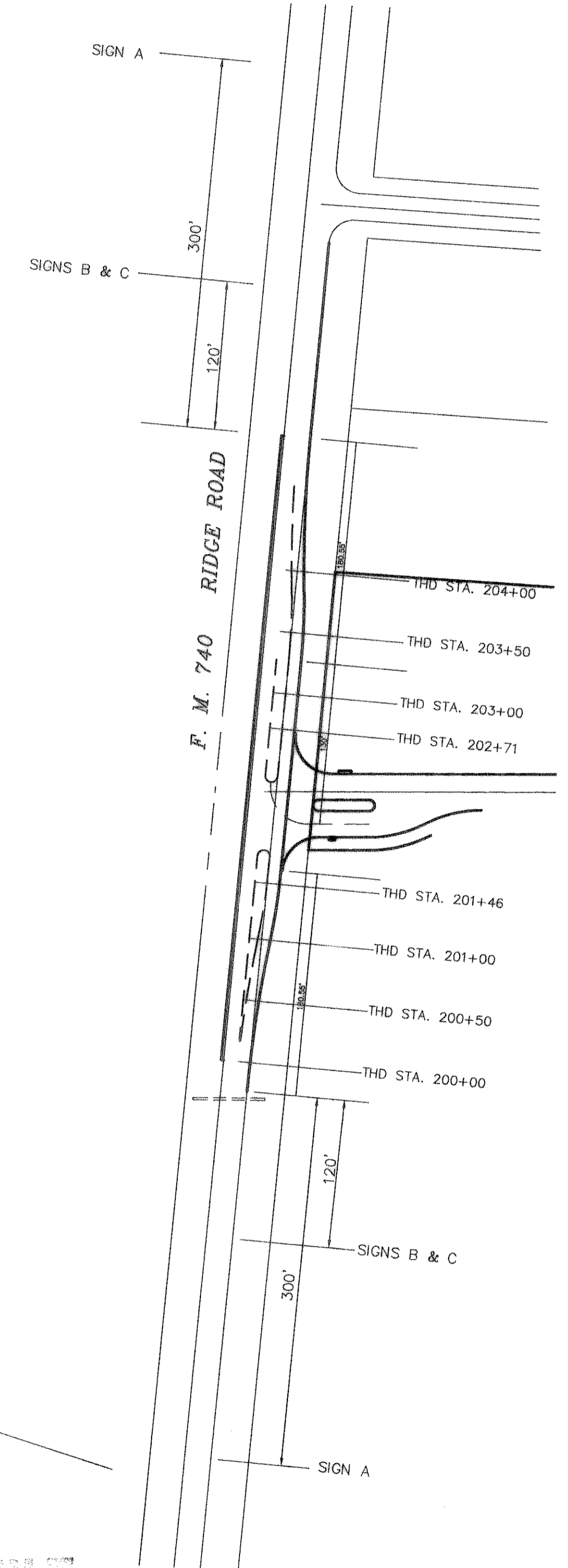
CONSTRUCTION DETAIL

- MATERIAL:
1. Earth fill compacted to 95% density at optimum moisture content.
 2. 6" thick (compacted) base course conforming to TxDOT (THD) specification 232.
 3. 4" thick asphaltic concrete pavement Type "B" conforming to TxDOT (THD) specification 340.
 4. 2" thick asphaltic concrete pavement Type "D" conforming to TxDOT (THD) specification 340.



CURVE	RADIUS	LENGTH	TANGENT	CHORD	BEARING	DELTA
C1	1093.21'	120.98'	80.55'	120.91'	S02°22'31"W	06°20'26"
C2	541.64'	59.94'	30.00'	59.91'	N02°22'31"E	06°20'26"
C3	1093.21'	120.98'	80.55'	120.91'	S08°40'20"W	06°20'26"
C4	541.64'	59.94'	30.00'	59.91'	N08°40'20"E	06°20'26"

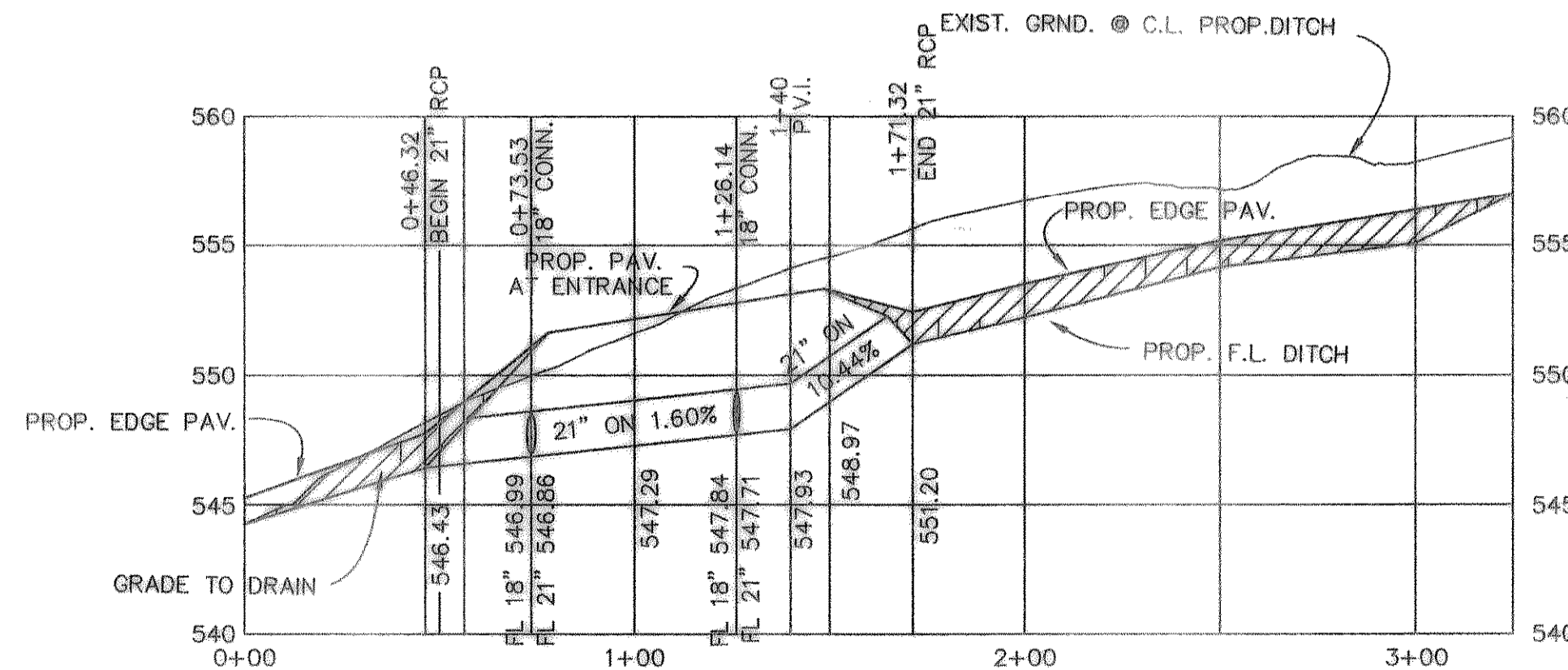
SIGN LOCATIONS



ONE WAY TRAFFIC
DAYTIME OPERATION &
STRIPING OPERATION

NIGHT TIME OPERATION

AS BUILT



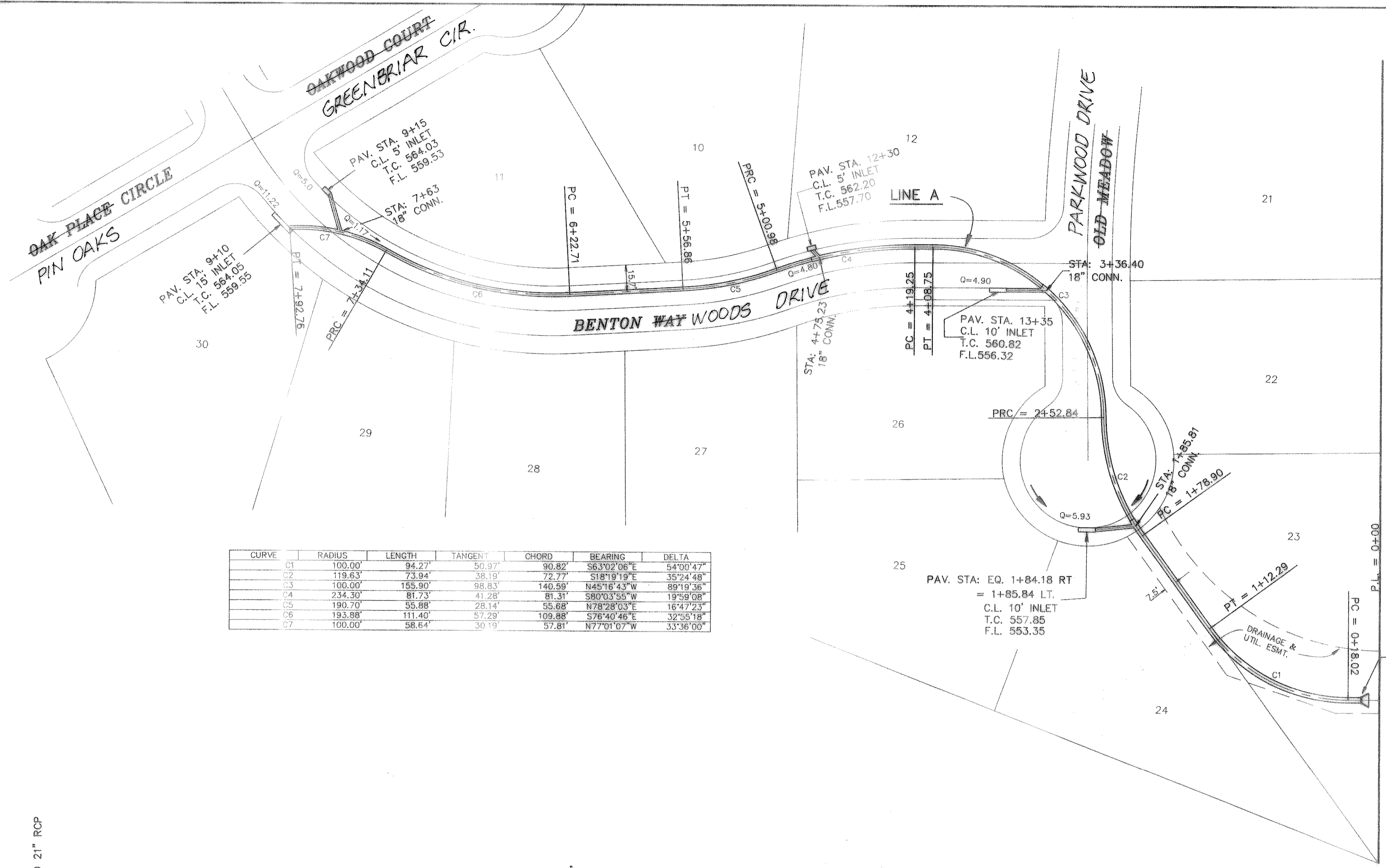
B.M.
RD D NAIL IN P.P. #2315/443/3512
LOCATED 35' +/- LT. OF PAV. STA. 0+41
BENTON WAY
ELEVATION = 560.01

B.M.
60 D NAIL IN 16" ELM TREE 50' +/-
S.E. OF N.E. CORNER OF LOT 8 & 9,
BLOCK A,
ELEVATION = 564.07

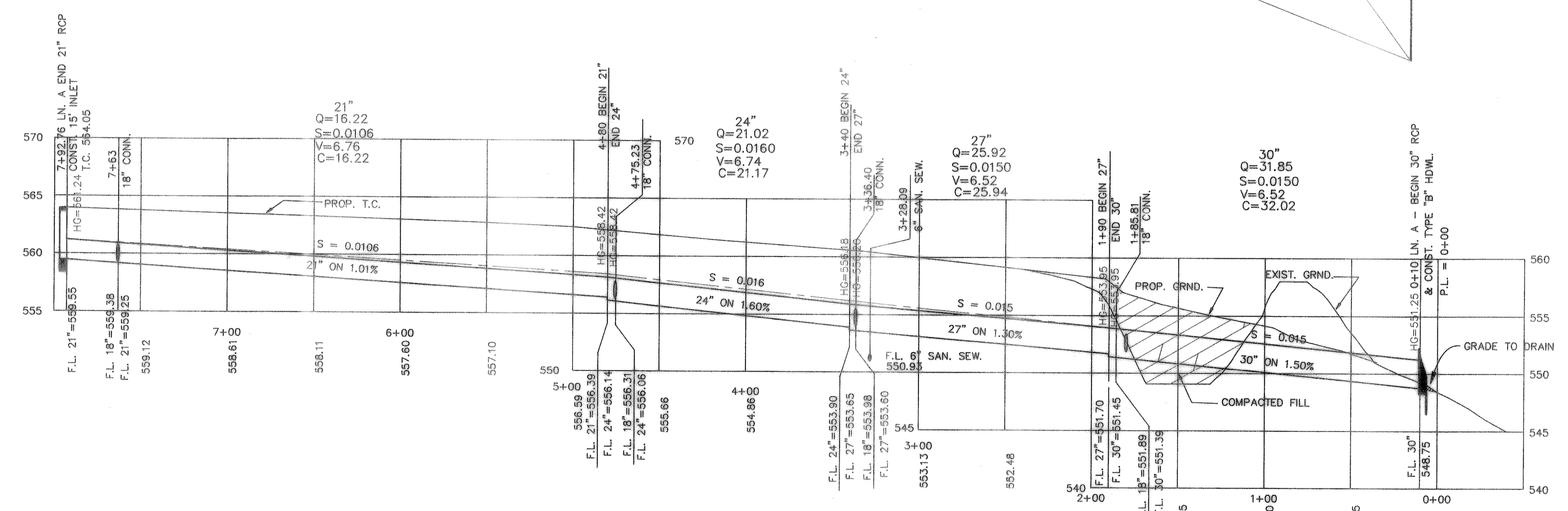
REVISION	DESCRIPTION	DATE	SCALE	DESIGN	DRAWN
1	ADDED SIGN LOC.	7/11/95	1" = 40'	H.L.E.	
2	ADDED CONST. DETAIL	6/28/95	1" = 6'		
3	REV. PER FIRST REVIEW	12/8/94			

PROPOSED F.M. 740 PAV. TRANSITION
& STORM SEWER PLAN & PROFILE
BENTON WOODS
CITY OF ROCKWALL

SHEET NO.	3A
JOB NO.	9417



CURVE	RADIUS	LENGTH	TANGENT	CHORD	BEARING	DELTA
C1	100.00'	84.27'	50.97'	90.82'	S63°02'06"E	54°00'47"
C2	119.63'	73.94'	38.19'	72.27'	S18°19'19"E	39°24'48"
C3	100.00'	155.90'	98.83'	140.59'	N45°16'43"W	89°19'36"
C4	234.30'	81.73'	41.28'	81.31'	S80°03'55"W	19°59'08"
C5	190.70'	35.88'	28.14'	55.88'	N78°28'03"E	16°47'23"
C6	193.98'	111.40'	87.29'	109.88'	S76°40'46"E	32°55'18"
C7	100.00'	88.64'	30.19'	57.81'	N77°01'07"W	33°36'00"



B.M.
60 D NAIL IN P.P. #2815/448/3512
LOCATED 35' +/- LT. OF PAV. STA. 0+11
BENTON WAY
ELEVATION = 560.81

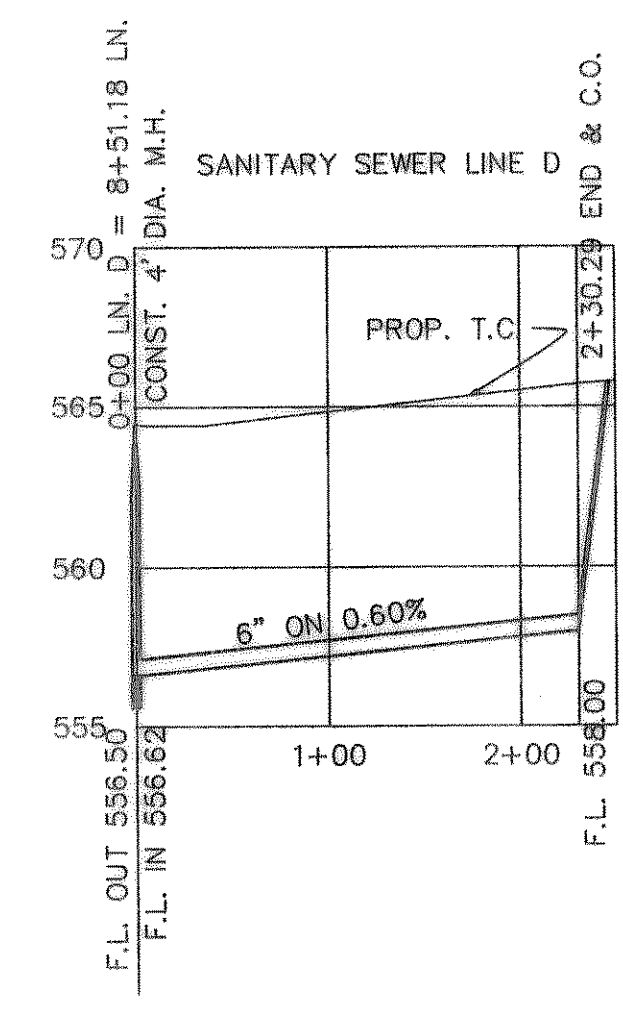
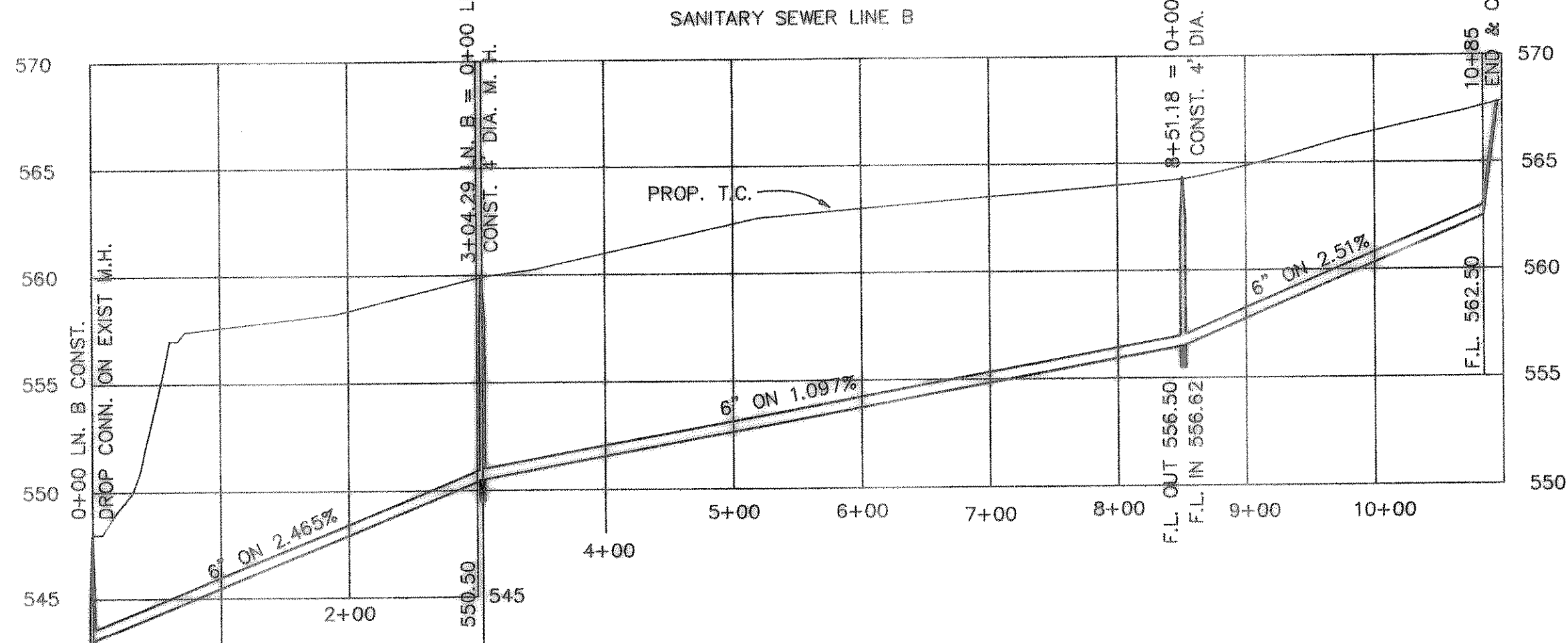
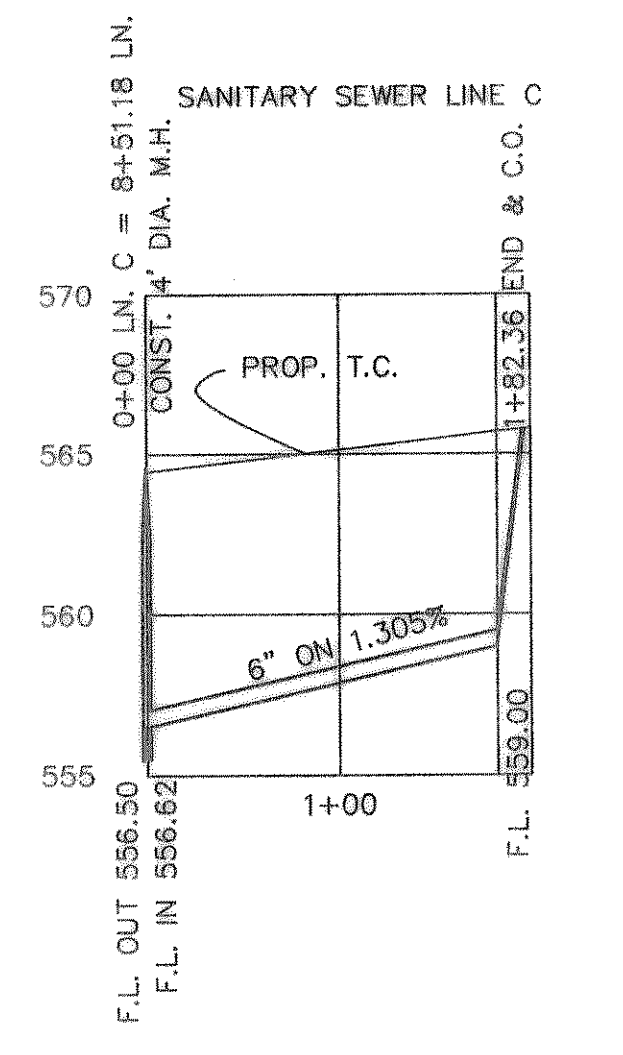
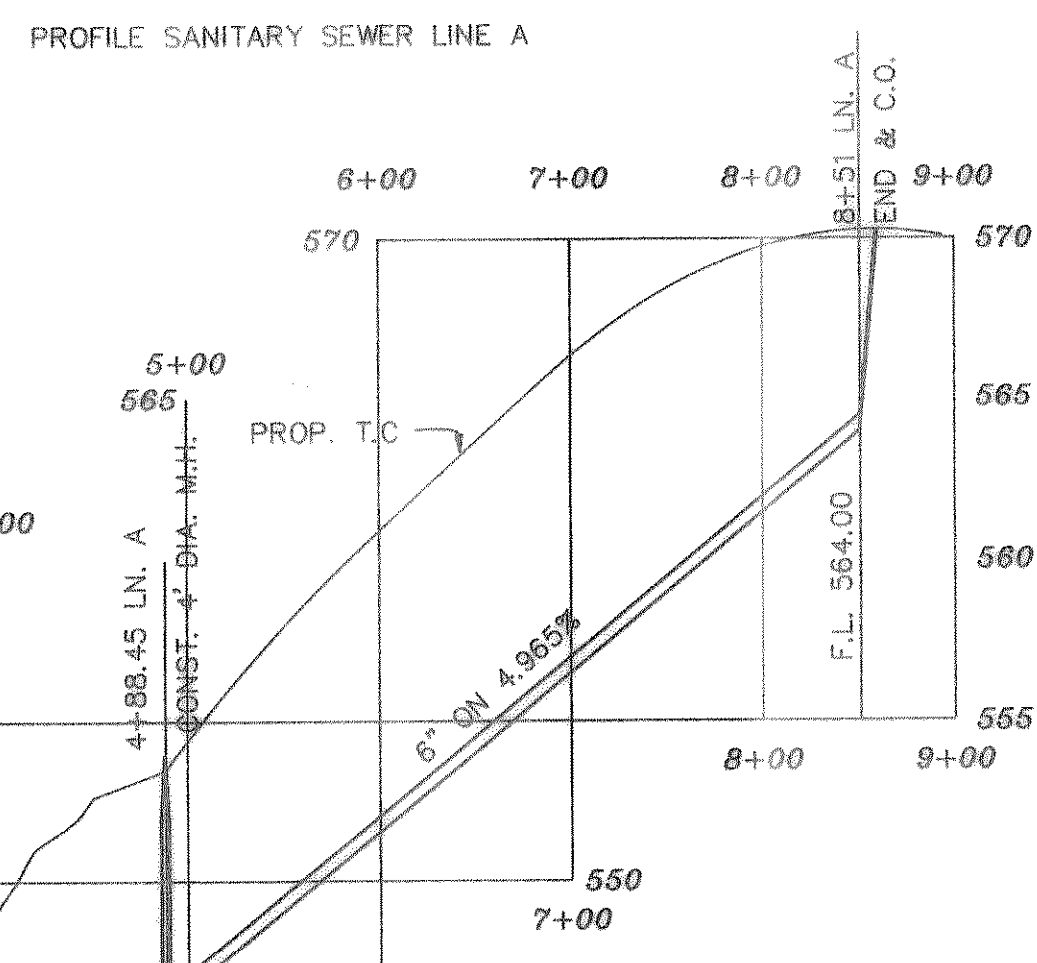
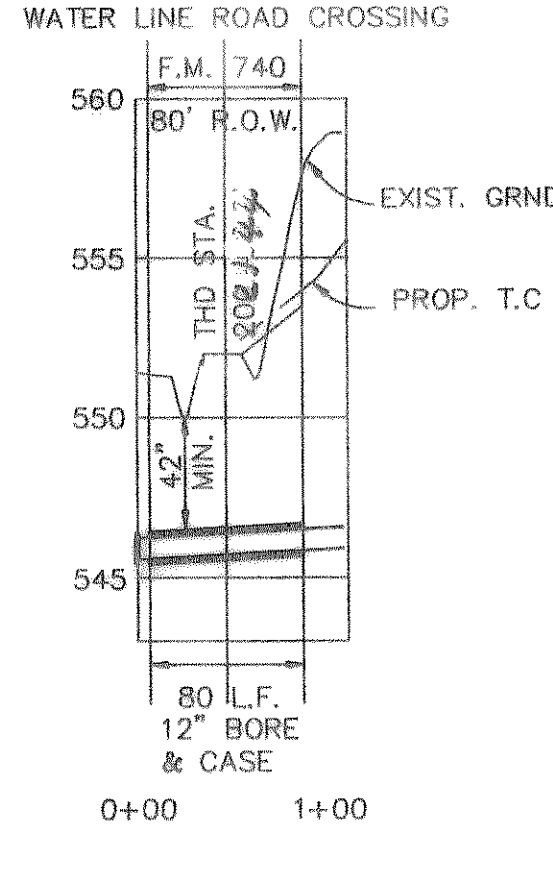
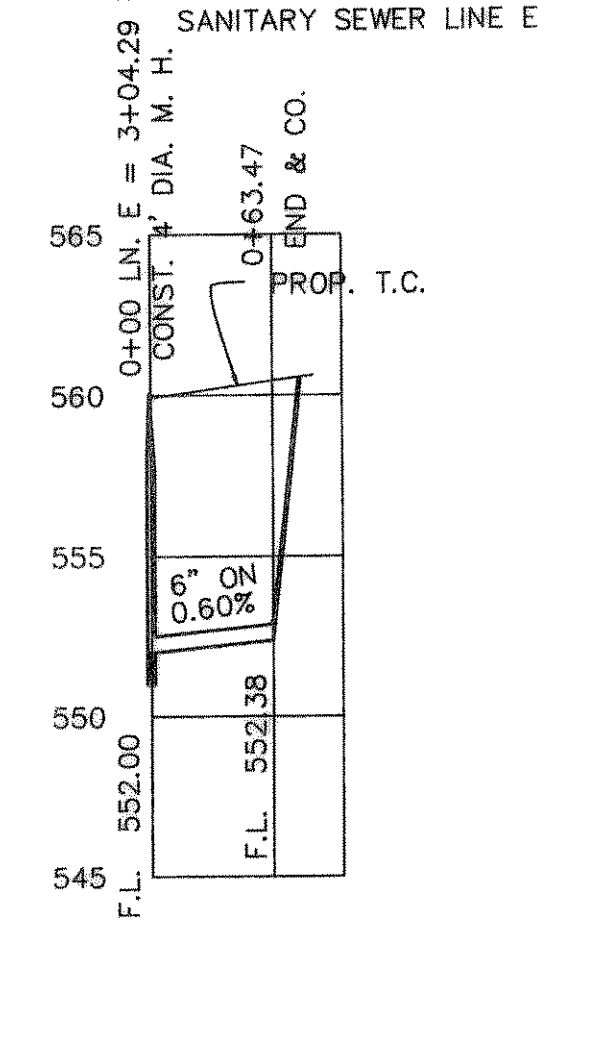
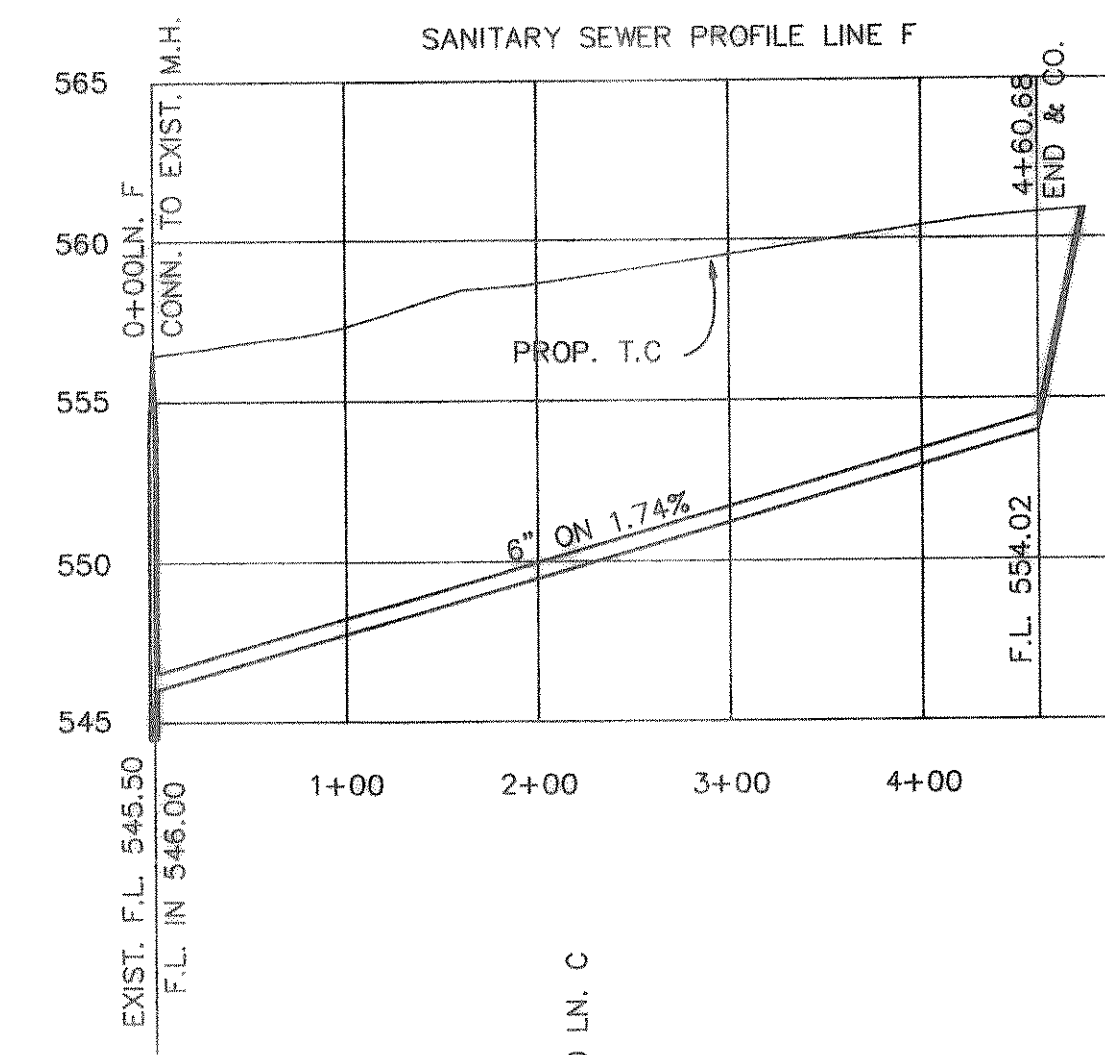
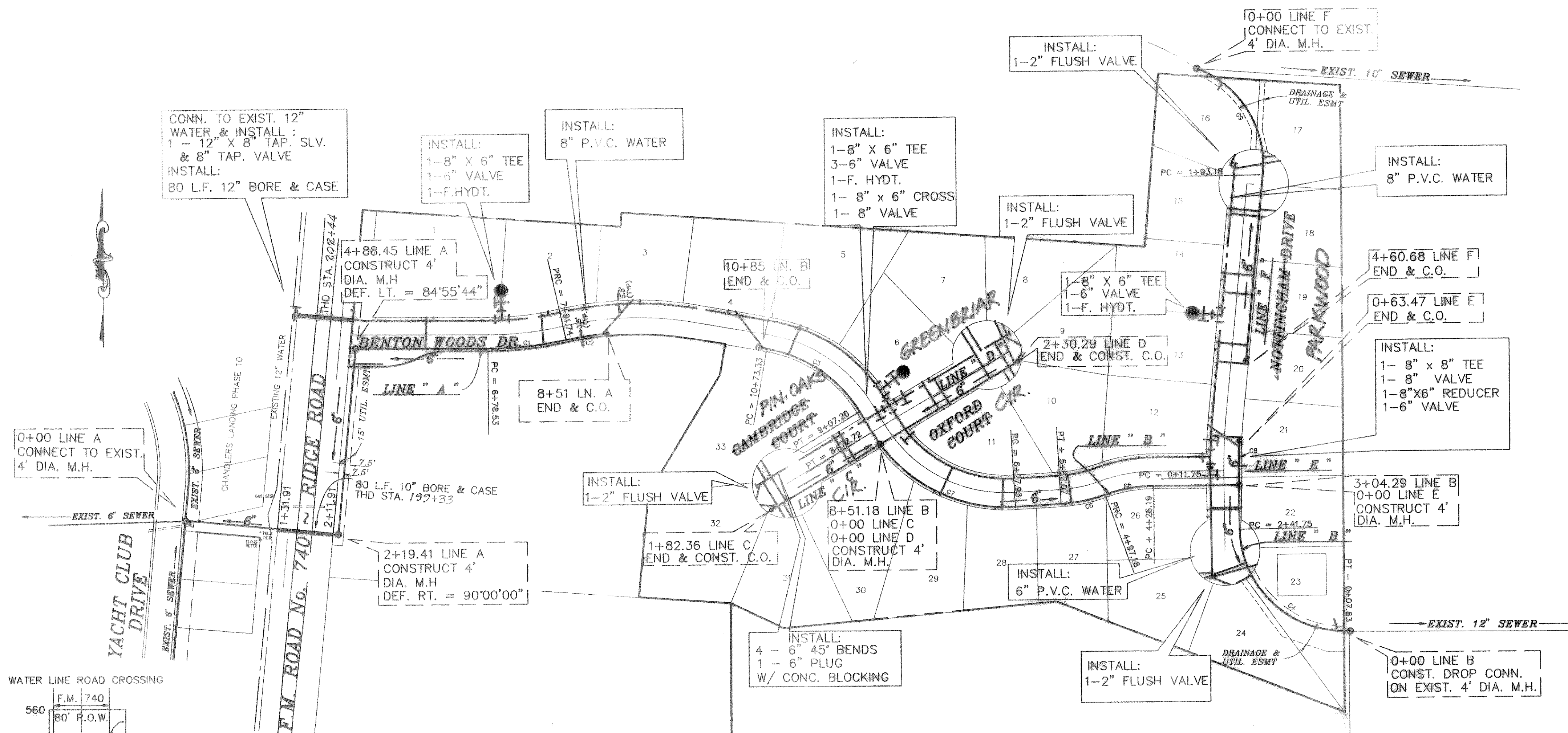
B.M.
60 D NAIL IN 15" ELM TREE 69' +/-
S.E. OF N.E. CORNER OF LOT 8 & 9,
BLOCK A
ELEVATION = 564.07

AS BUILT

Harold L. Evans

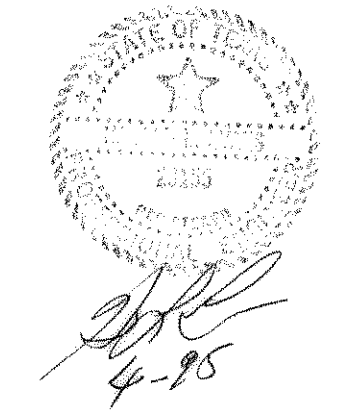
HAROLD L. EVANS CONSULTING ENGINEER P.O. BOX 28355 2331 GUS THOMASSON ROAD, SUITE 102 DALLAS, TEXAS 75228. (214) 328-8133		STORM SEWER		SHEET NO. 9
DATE: 7/29/94 SCALE: 1" = 40' 1" = 6'		DESIGN: H.L.E. DRAWN:		JOB NO. 9417
REVISION DESCRIPTION		BENTON WOODS CITY OF ROCKWALL		10

CURVE	RADIUS	LENGTH	TANGENT	CHORD	BEARING	DELTA
C1	496.50'	113.21'	56.85'	112.96'	N83°56'32" E	17°03'51"
C2	453.50'	59.28'	29.87'	59.22'	N87°29'14" E	7°29'14"
C3	193.67'	166.02'	88.53'	161.03'	N55°16'56" W	49°07'47"
C4	150.00'	234.12'	148.51'	211.07'	S45°19'43" E	89°26'35"
C5	203.50'	70.99'	35.86'	70.63'	S80°03'53" W	19°59'11"
C6	221.50'	64.90'	32.68'	64.66'	N78°28'07" E	16°47'13"
C7	224.88'	244.79'	138.13'	232.86'	S67°55'44" E	62°35'22"
C8	829.15'	61.72'	26.87'	61.71'	S01°10'18" W	03°34'26"
C9	150.00'	193.18'	112.80'	180.11'	N31°21'18" W	73°47'24"



B.M.
60 D NAIL IN P.P. #2315/443/3512
LOCATED 35' +/- LT. OF PAV. STA. 0+41
BENTON WOODS
ELEVATION = 560.81

B.M.
60 D NAIL IN 15' ELM TREE 59' +/-
S.E. OF N.E. CORNER OF LOT B & 9,
BLOCK A.
ELEVATION = 564.07



HAROLD L. EVANS CONSULTING ENGINEER P.O. BOX 28365 2331 GUS THOMASSON ROAD, SUITE 102 DALLAS, TEXAS 75228. (214) 328-8133		SHEET NO. 7 10
WATER & SANITARY SEWER BENTON WOODS CITY OF ROCKWALL		JOB NO. 9417
REVISION DESCRIPTION 7/29/84	SCALE 1" = 100' 1" = 6'	DESIGN H.L.E.