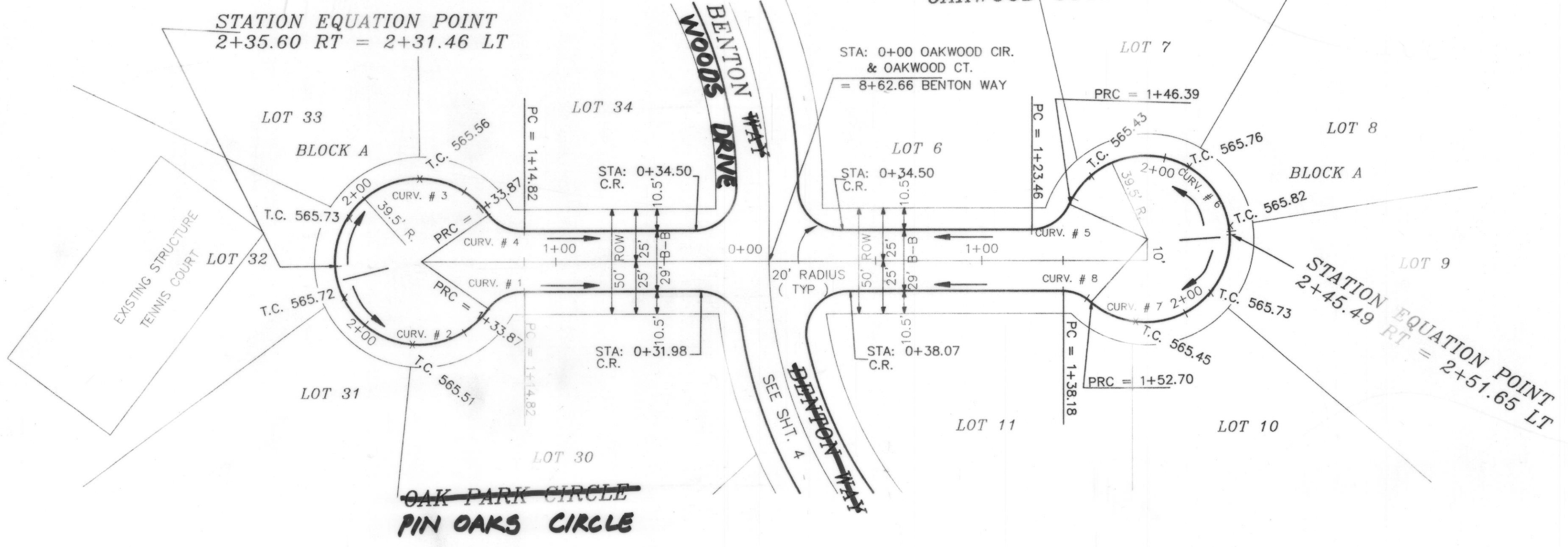
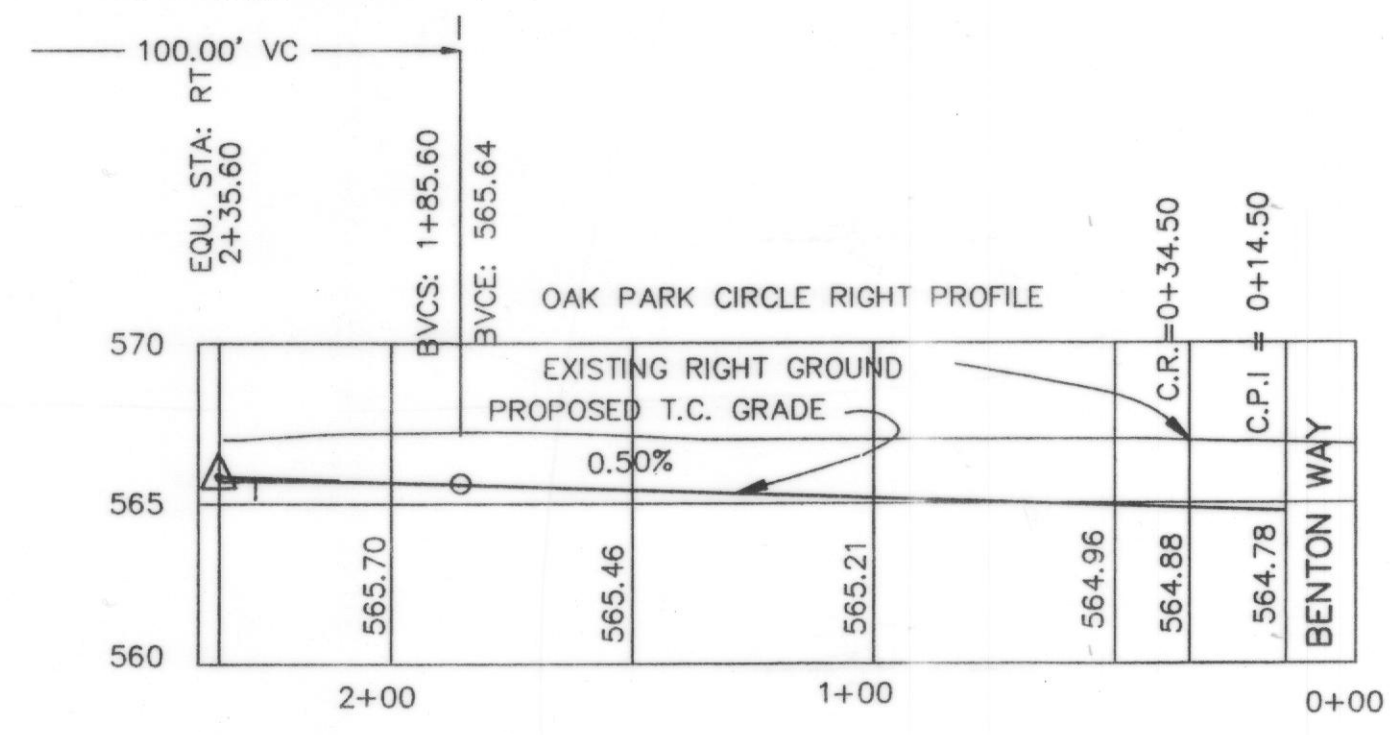


**GREENBRIAR CIRCLE
OAKWOOD COURT**

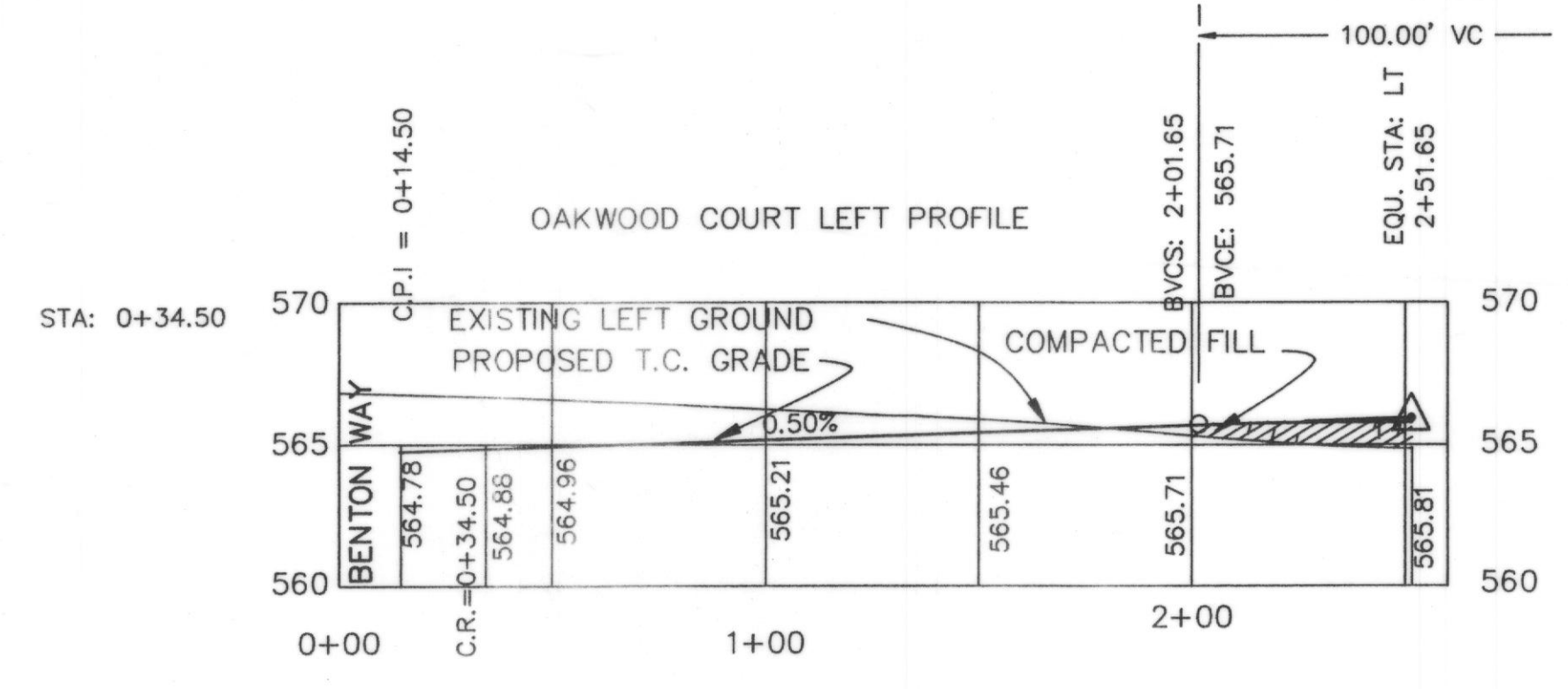


CURVE	RADIUS	LENGTH	TANGENT	CHORD	BEARING	DELTA
CURV. # 1	20.00'	19.05'	10.31'	18.33'	S32°00'07"W	54°33'41"
CURV. # 2	39.50'	97.59'	113.31'	74.60'	N75°30'07"E	141°33'40"
CURV. # 3	39.50'	101.73'	135.79'	75.86'	S40°03'47"W	147°33'41"
CURV. # 4	20.00'	19.05'	10.31'	18.33'	N86°33'48"E	54°33'41"
CURV. # 5	20.00'	22.93'	12.91'	21.69'	N26°26'26"E	65°41'03"
CURV. # 6	39.50'	105.26'	162.55'	76.77'	S69°56'26"W	152°41'03"
CURV. # 7	39.50'	92.79'	94.41'	72.88'	N33°34'42"E	134°35'29"
CURV. # 8	20.00'	14.52'	7.60'	14.20'	S80°04'42"W	41°35'29"

HIGH POINT ELEV = 565.75
HIGH POINT STA = 2+28.11
PVI STA = 2+35.60
PVI ELEV = 565.89
A.D. = -1.18
K = 84.67



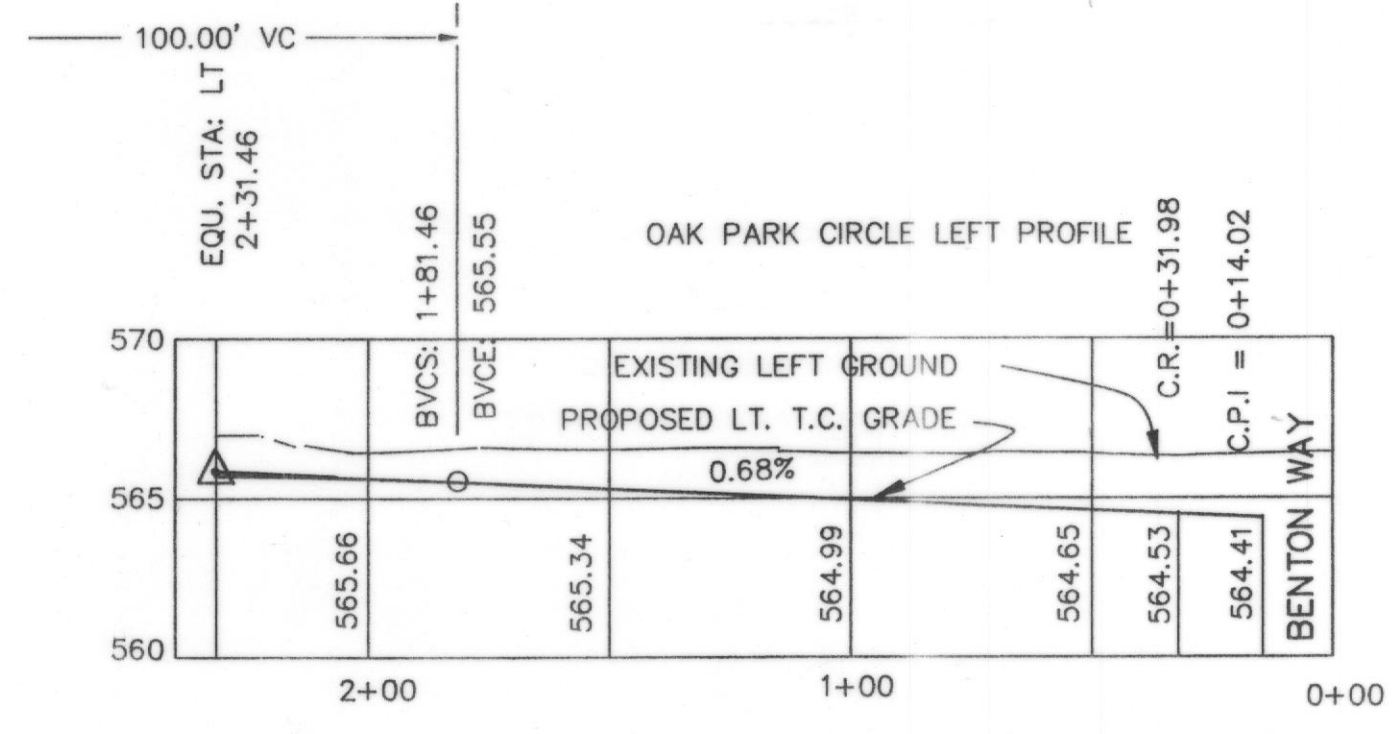
HIGH POINT ELEV = 565.82
HIGH POINT STA = 2+43.90
PVI STA = 2+51.65
PVI ELEV = 565.96
A.D. = -1.18
K = 84.92



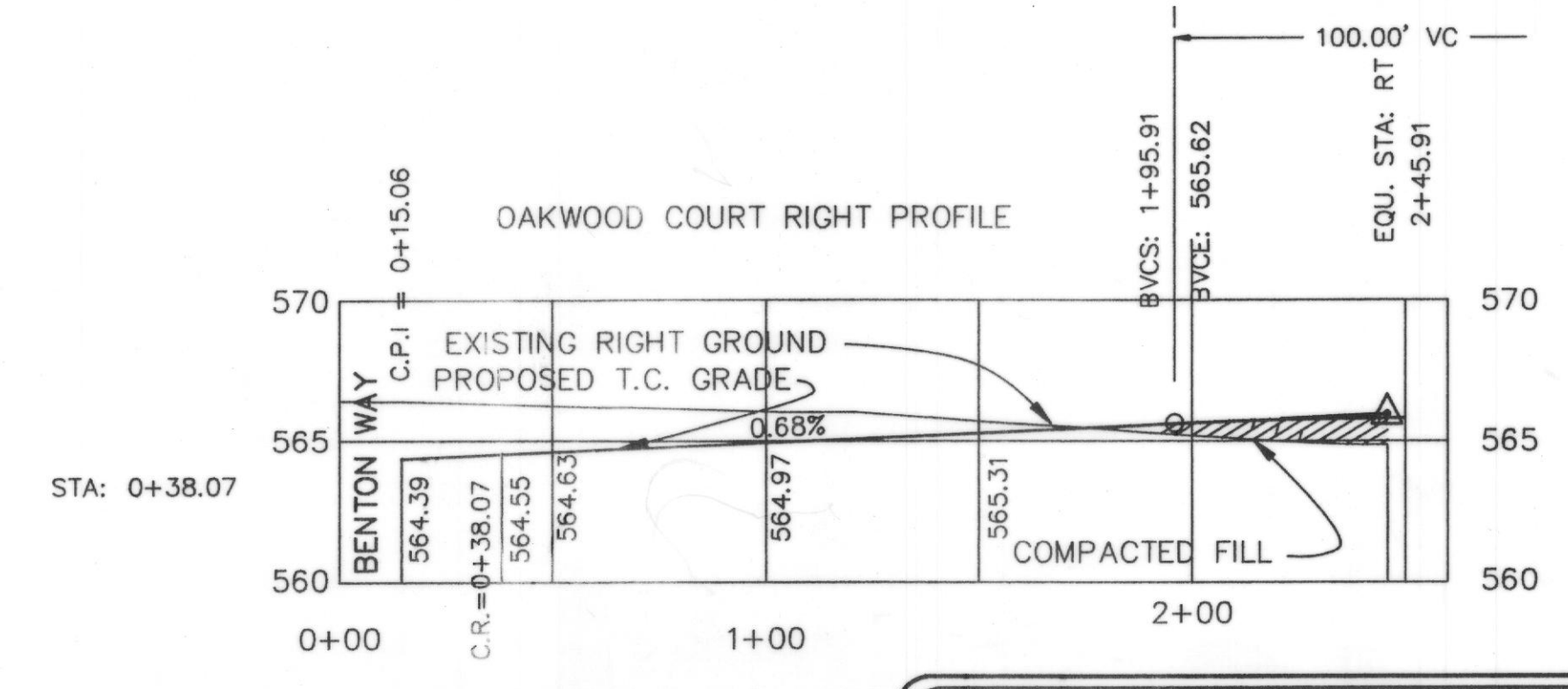
B.M.
60 D NAIL IN P.P. #2315/443/3512
LOCATED 35' +/- LT. OF PAV. STA. 0+41
BENTON WAY
ELEVATION = 560.81

B.M.
60 D NAIL IN 15" ELM TREE 59' +/-
S.E. OF N.E. CORNER OF LOT 8 & 9,
BLOCK A
ELEVATION = 564.07

HIGH POINT ELEV = 565.75
HIGH POINT STA = 2+39.16
PVI STA = 2+31.46
PVI ELEV = 565.89
A.D. = -1.18
K = 84.59



HIGH POINT ELEV = 565.82
HIGH POINT STA = 2+53.48
PVI STA = 2+45.91
PVI ELEV = 565.96
A.D. = -1.18
K = 84.86



AS BUILT



REVISION DESCRIPTION	DATE	SCALE	DESIGN	DRAWN	SHEET NO. 5 10
	7/29/94	HORZ 1" = 40' VERT 1" = 6'	H.L.E.	K.E.B.	
HAROLD L. EVANS CONSULTING ENGINEER 2331 GUS THOMASSON ROAD, SUITE 102 DALLAS, TEXAS 75228, (214) 328-8133					PAVING PLAN OAKWOOD CT. & OAK PARK CI. BENTON WOODS CITY OF ROCKWALL
JOB NO. 9417					