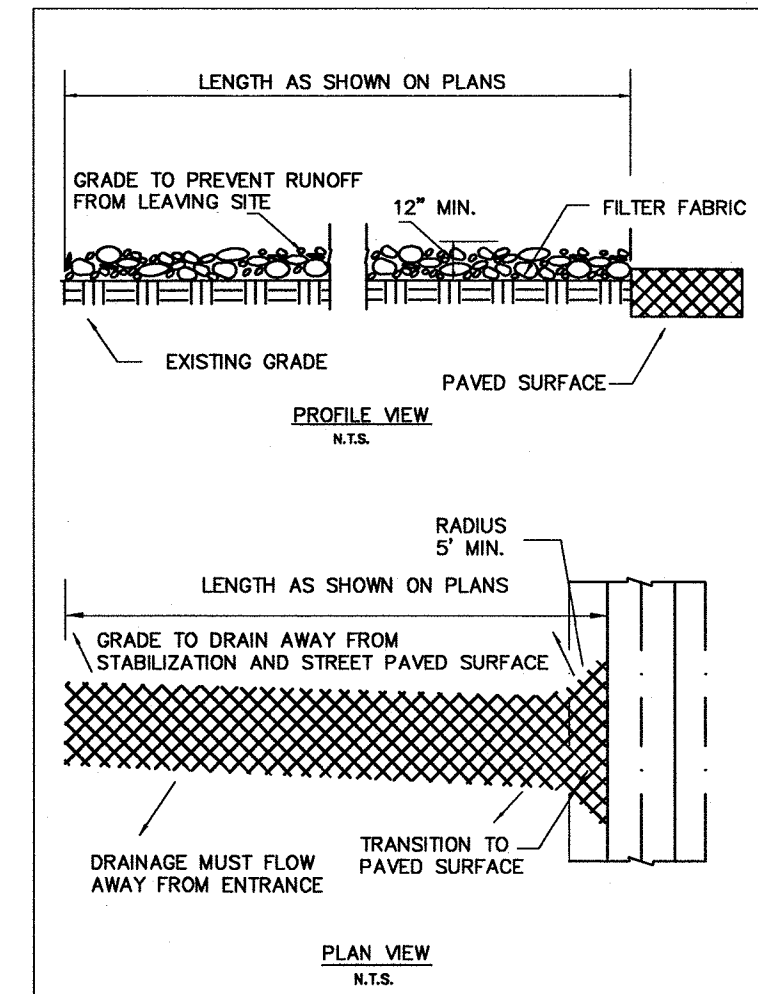


RECORD DRAWINGS **JANUARY 20, 2014**
 NOTE: THE INTENT OF THE OWNER AND ENGINEER WAS TO CONSTRUCT THE IMPROVEMENTS ACCORDING TO THESE PLANS AS APPROVED BY THE CITY OF ROCKWALL. THE LINES AND GRADES WERE SET ON THE GROUND FOR CONSTRUCTION ACCORDING TO SAID PLANS. WE ARE NOT AWARE OF ANY CHANGES OR REVISIONS TO THESE PLANS DURING CONSTRUCTION EXCEPT AS NOTED ON THE PLANS.



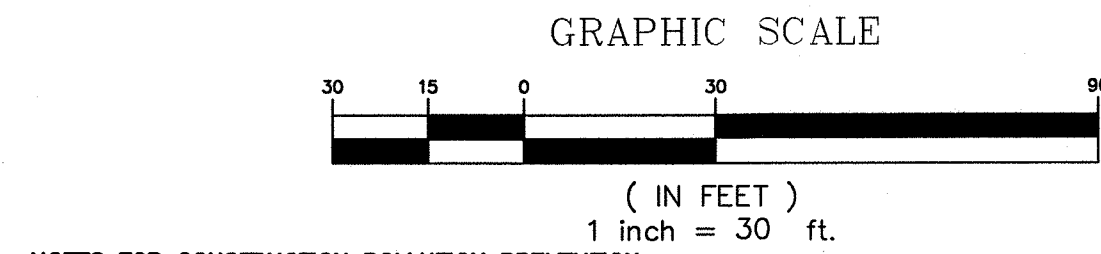
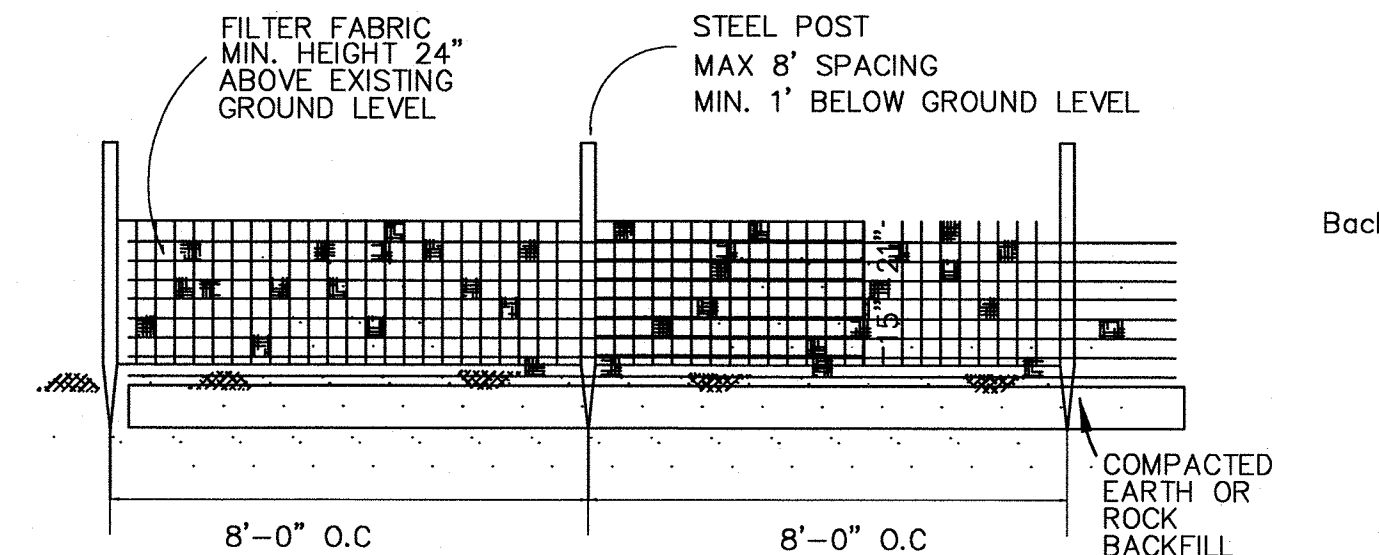
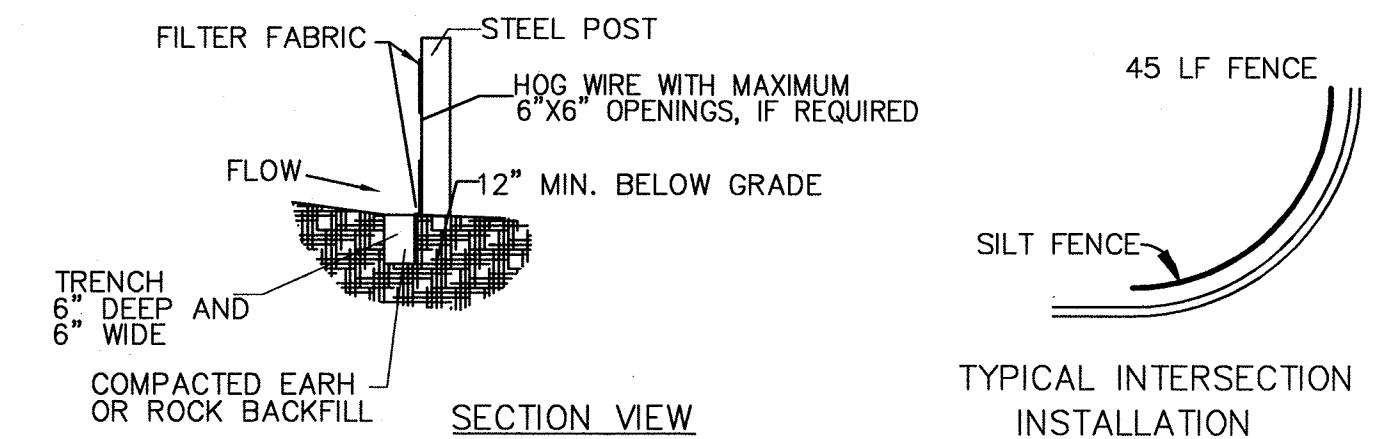
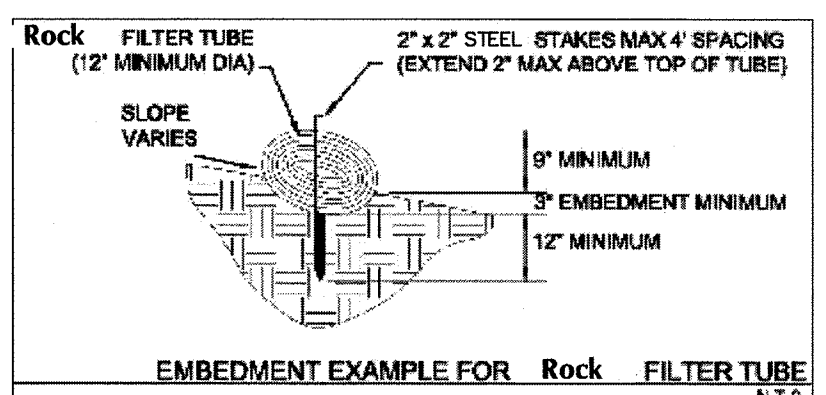
| | |
|-------------------------|----------------|
| STABILIZED CONSTRUCTION | 02270.0 |
| ENTRANCE | DEC. 02 2070 A |

STABILIZED CONSTRUCTION ENTRANCE

GENERAL NOTES

- STONE SHALL BE 3 TO 5 INCH DIAMETER CRUSHED ROCK. NO CRUSHED CONCRETE ALLOWED.
- LENGTH SHALL BE SHOWN ON PLANS, WITH A MINIMUM LENGTH OF 30 FEET FOR LOTS WHICH ARE LESS THAN 150 FEET FROM EDGE OF PAVEMENT. THE MINIMUM DEPTH IN ALL OTHER CASES SHALL BE 50 FEET.
- THE THICKNESS SHALL NOT BE LESS THAN 12 INCHES.
- THE WIDTH SHALL BE NO LESS THAN THE FULL WIDTH OF ALL POINTS OF INGRESS OR EGRESS.
- WHEN NECESSARY, VEHICLES SHALL BE CLEANED TO REMOVE SEDIMENT PRIOR TO ENTRANCE ONTO A PUBLIC ROADWAY. WHEN WASHING IS REQUIRED, IT SHALL BE DONE ON AN AREA STABILIZED WITH CRUSHED STONE WITH DRAINAGE FLOWING AWAY FROM BOTH THE STREET AND THE STABILIZED ENTRANCE. ALL SEDIMENT SHALL BE PREVENTED FROM ENTERING ANY STORM DRAIN, DITCH OR WATERCOURSE USING APPROVED METHODS.
- THE ENTRANCE SHALL BE MAINTAINED IN A CONDITION WHICH WILL PREVENT TRACKING OR FLOWING OF SEDIMENT ONTO PAVED SURFACES. THIS MAY REQUIRE PERIODIC TOP DRESSING WITH ADDITIONAL STONE AS CONDITIONS DEMAND.
- THE ENTRANCE MUST BE PROPERLY GRADED OR INCORPORATE A DRAINAGE SWALE TO PREVENT RUNOFF FROM LEAVING THE CONSTRUCTION SITE.

| | |
|-------------------------|----------------|
| STABILIZED CONSTRUCTION | 02270.0 |
| ENTRANCE | DEC. 02 2070 A |



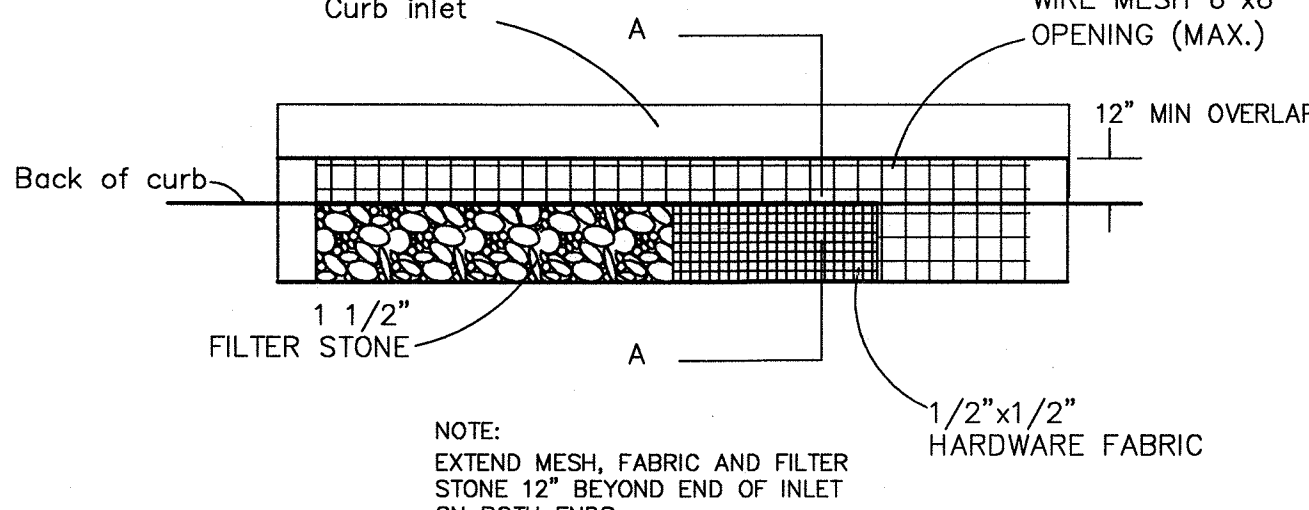
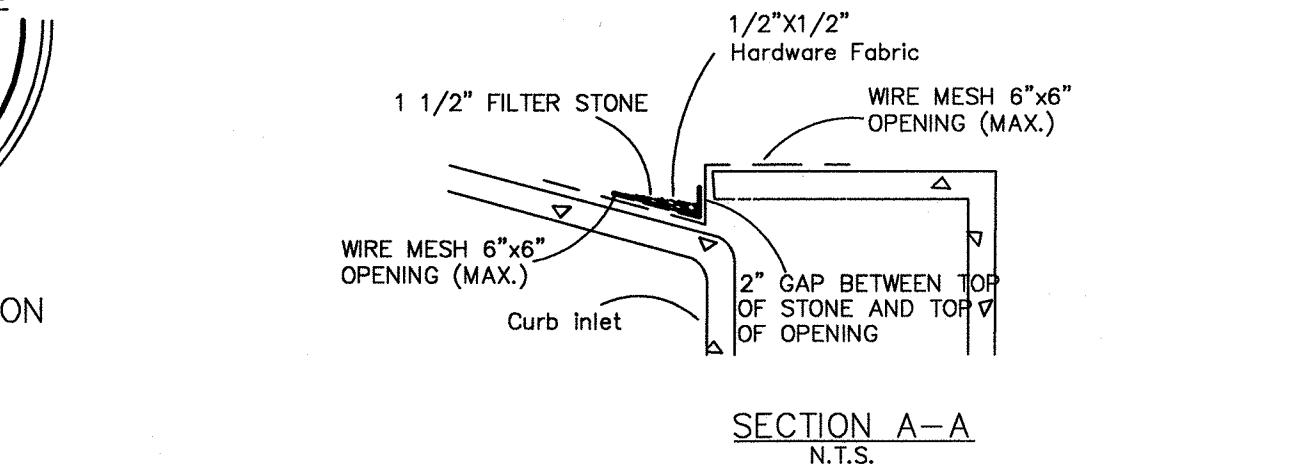
NOTES FOR CONSTRUCTION POLLUTION PREVENTION PLAN

- Type of construction will be installation of water, sanitary sewer & storm sewer, excavation of streets, excavation to build of building pad. Construction of concrete streets.
- Sequence of construction First - excavation of streets, Second installation of water, sanitary sewer & storm sewer, Third - street paving.
- Total site area = 4.194 Acres; Approximate area disturbed is 100% or 4.194 Acres. Runoff coefficient = 0.90
- No information of quality of storm water discharge. Storm water drains to Unamed Creek via City of Rockwall storm sewer facilities.
- During Utility Construction silt fence to be placed around inlets until paving of inlet tops is complete. Equivalent measures can be taken to avoid siltation into inlets and storm sewer system as approved by engineer.
- The site will be reviewed by owner or owner representative on a weekly basis and after any storm which generated 0.5" of precipitation. Any adjustments to erosion control plan will be made if needed.
- Stabilization practices may include: temporary seeding, permanent seeding, mulching, geotextiles, sod stabilization, vegetative buffer strips, protection of trees, preservation of mature vegetation, and other appropriate measure.
- All construction to meet the requirements imposed by the Environmental Protection Agency in compliance with the Clean Water Act.
- Solid non-hazardous construction waste shall be disposed of in trash dumpsters or approved equal, in a location approved by the Operator. Potentially soluble or leachable solid waste shall be stored off the ground and in covered leak-proof containers. Site shall be policed daily for litter and debris disposal. Solid waste shall be properly disposed of off-site on a regular basis.
- Bottom and sides of pond to be either sodded or have anchored curbs prior to paving. Pond to be completely in prior to paving.
- 75-80% of all disturbed areas to have a min. 1" tall grass prior to City acceptance.

EROSION AND SEDIMENT CONTROLS

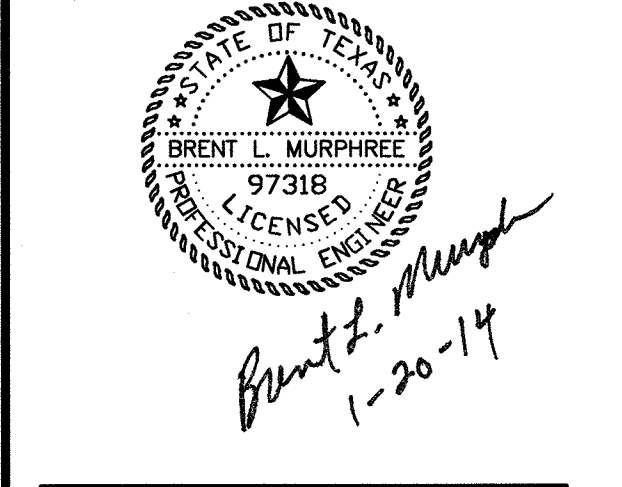
Maintenance/Inspection Procedures

- The contractor shall provide and maintain a rain gauge utilizing Min. 0.1 inch increments at the project site.
- Control measures will be inspected at least once a week or within 24 hours of any storm event of 0.5 inch or greater. If a repair is necessary, it will be done at the earliest practicable date.
- Inspection will be performed by the owners representative at least once a week as well as after every 0.5 inch of rain or greater. An inspection and maintenance report will be made for each inspection and kept at the project site. The inspection should use the operator inspection form in the NCTCOG Construction BMP Manual or other form approved by the city.
- The contractor shall keep records of the construction activity on the site.



NOTE: EXTEND MESH, FABRIC AND FILTER STONE 12" BEYOND END OF INLET ON BOTH ENDS.

INLET EROSION PROTECTION
PLAN VIEW
 N.T.S.



Telios Corporation
 12946 Daly Ashford, Suite 130 Sugar Land,
 Texas 77478

ASA Dally Structural Engineers
 9800 Richmond Ave., Suite 460 Houston,
 Texas 77042

Studio 13 Design Group
 519 Bennett Lane, Suite 203 Lewisville, TX
 75057

DOWDEY, ANDERSON & ASSOCIATES, INC.
 5225 Village Creek Drive, Suite 200 Plano, Texas 75093
 Phone 972.931.0694 Fax 972.931.9538
 STATE REGISTRATION NUMBER: F-399

| No. | Date | Description |
|-----|------------|-------------------|
| 1 | 9/28/2012 | ISSUED FOR REVIEW |
| 2 | 10/31/2012 | ISSUED FOR REVIEW |
| 3 | 11/13/2012 | ISSUED FOR REVIEW |
| 4 | 11/16/2012 | ISSUED FOR REVIEW |
| 5 | 01/30/2013 | PR 01 |
| 6 | 01/20/2014 | RECORD DRAWING |

Emerus Emergency Hospital - Rockwall



Interstate Highway 30 and T.L. Townsend Drive
 Rockwall, TX 75087

Erosion Control Plan

Copyright © 2013 by Philo Wilke Partnership. All rights reserved.
 This drawing and all information herein are the property of Philo Wilke Partnership. No part of this drawing may be reproduced, stored in a retrieval system, or transmitted in any form or by any means, electronic, mechanical, photocopying, recording, or by any information storage and retrieval system, without the prior written permission of Philo Wilke Partnership. Any reuse, modification, or alteration of this drawing without the prior written permission of Philo Wilke Partnership is strictly prohibited. All other rights reserved. All other information is the property of the respective owners.