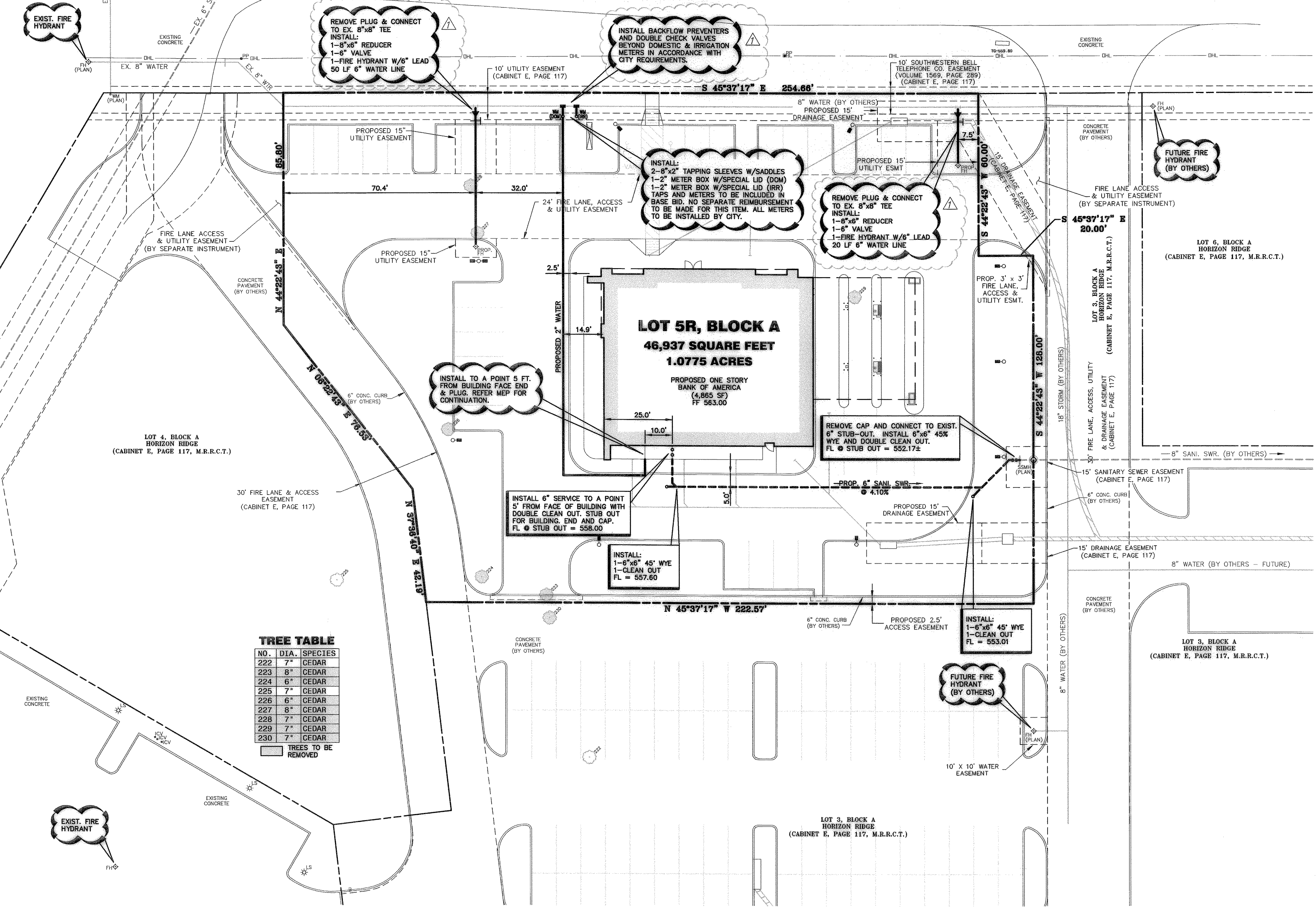


WILLIAMS 12/04/2003 - 11:39AM
S:\DOBES\1100-1199\1130-02\DWG\1130-02.DWG
© POGUE ENGINEERING & DEVELOPMENT COMPANY, INC. 2003. ALL RIGHTS RESERVED. THE ENGINEERING DESIGN, DETAIL AND ENGINEERING DRAWINGS FOR THIS PROJECT AND/OR ORIGINAL PROJECT ARE THE LEGAL PROPERTY OF POGUE ENGINEERING & DEVELOPMENT COMPANY, INC. THEIR USE FOR REPRODUCTION, CONSTRUCTION, OR DISTRIBUTION IS PROHIBITED UNLESS AUTHORIZED IN WRITING BY POGUE ENGINEERING & DEVELOPMENT COMPANY, INC.

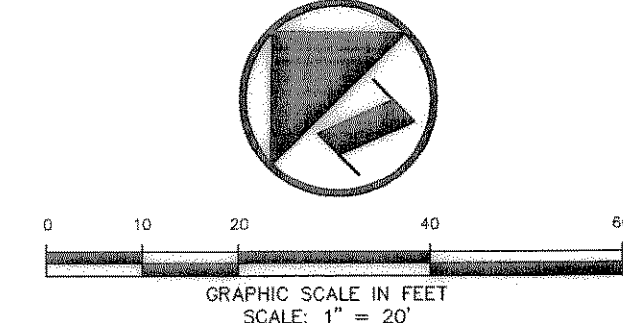
HORIZON ROAD (F.M. 3097)
(110' R.O.W.)
(CABINET E, PAGE 117, M.R.R.C.T.)



TREE TABLE

NO.	DIA.	SPECIES
222	7"	CEDAR
223	8"	CEDAR
224	6"	CEDAR
225	7"	CEDAR
226	6"	CEDAR
227	8"	CEDAR
228	7"	CEDAR
229	7"	CEDAR
230	7"	CEDAR

TREES TO BE REMOVED



BASIS OF BEARINGS
SOUTH R.O.W. LINE OF HORIZON RD/
S 45°37'17" E AS SHOWN ON PLAN
HORIZON RIDGE ADDITION
(CABINET E, PAGE 117, M.R.R.C.T.)

LEGEND

- BL BOLLARD
- EM ELECTRIC METER
- PP POWER POLE
- LS LIGHT STANDARD
- WM WATER METER
- WV WATER VALVE
- ICV IRRIGATION CONTROL VALVE
- FH FIRE HYDRANT
- FDCC FIRE DEPARTMENT CONNECTION
- CO CLEAN OUT
- MH MANHOLE
- GM GAS METER
- TSC TRAFFIC SIGNAL CONTROL
- TSP TRAFFIC SIGNAL POLE
- TELE TELEPHONE BOX
- TV TV BOX
- FP FLAG POLE
- PROPERTY LINE
- O.H. O.H. POWER LINES
- TEL U/G TELEPHONE LINES
- WATER U/G WATER LINE
- GAS U/G GAS LINE
- FENCE
- XXX EXISTING CONTOURS
- XXX PROPOSED CONTOURS
- XXX PROPOSED CONTOURS FROM GRADING PLAN FOR HORIZON RIDGE ADDITION PREPARED BY LAWRENCE A. CATES & ASSOCIATES, INC.
- XXX EXISTING SPOT GRADES
- XXX PROPOSED SPOT GRADES
- XXX PROPOSED SPOT GRADES (BY OTHERS)
- XXX PROPOSED EROSION CONTROL
- XXX PROPOSED DRAINAGE DIVIDES
- XXX PROPOSED DRAINAGE DIVIDES FROM DRAINAGE PLAN FOR HORIZON RIDGE ADDITION PREPARED BY LAWRENCE A. CATES & ASSOCIATES, INC. DATED 9-12-01

PROVIDE CONDUIT AS REQUIRED FOR PHONE, ELECTRICAL, GAS, IRRIGATION & LIGHTING. COORDINATE WITH LANDSCAPE, MEP & FRANCHISE UTILITY COMPANIES FOR LOCATIONS NUMBER & SIZES OF CONDUITS AND SERVICES.

CAUTION!!
UNDERGROUND UTILITIES ARE LOCATED IN THIS AREA. 48 HOURS PRIOR TO ANY CONSTRUCTION ACTIVITIES, CONTACT LINE LOCATES FOR FRANCHISE UTILITY INFO. CALL BEFORE YOU DIG:
TEXAS EXCAVATION SAFETY SYSTEM (TESS)
1-800-344-8377
TEXAS ONE CALL SYSTEMS
1-800-245-4545
LONE STAR NOTIFICATION CENTER
1-800-669-8344 EXT. 5

BEFORE YOU DIG...

BENCHMARK LIST:

BENCHMARK #1
CITY OF ROCKWALL CONTROL MONUMENT RESET #1 LOCATED WEST OF AN ENTRANCE INTO A BANK OFF OF SUMMER STREET WEST OF F.M. 740. ELEVATION = 567.70

BENCHMARK #2
SQUARE COT ON TOP OF A CURB INLET LOCATED IN THE PARKING LOT NEAR THE NORTHEAST ENTRANCE TO THE WALGREEN'S STORE NEAR THE INTERSECTION OF F.M. 740 AND HORIZON ROAD. ELEVATION = 565.31

FRANCHISE UTILITY NOTES:

- UNCOR ELECTRIC & GAS - CONTACT BRIAN HUGHES @ (972) 771-3979
- SOUTHWESTERN BELL TELEPHONE - (214) 320-5307
- CHARTER COMMUNICATIONS (CABLE) - CONTACT BEVERLY SELLERS @ (817) 509-8272

RECORD DRAWINGS:
IT WAS THE INTENT THAT THE IMPROVEMENTS SHOWN BE CONSTRUCTED ACCORDING TO THESE PLANS AS APPROVED BY THE CITY. THE LINES AND GRADES WERE SET ON THE GROUND FOR CONSTRUCTION ACCORDING TO SAID PLANS. THE CITY INSPECTED THE CONSTRUCTION. THE ENGINEER DID NOT VERIFY LINES OR GRADES AFTER CONSTRUCTION. WE ARE NOT AWARE OF ANY CHANGES OR REVISIONS TO THESE PLANS DURING CONSTRUCTION OTHER THAN THOSE SHOWN.

RANDALL P. POGUE, P.E. DATE: DECEMBER 4, 2003
TX LIC. NO. 84780

NO.	DATE	REVISION / DESCRIPTION
4	8-19-03	COORDINATION
1	5-21-03	REVISED PER CITY COMMENTS

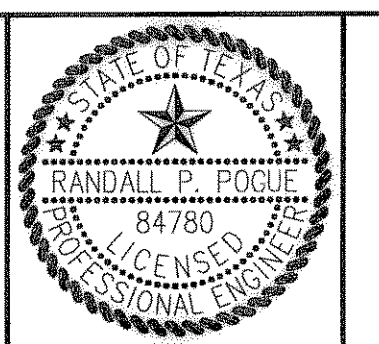
DESIGN	DRAWN	DATE	SCALE	NOTES
RPP	EMS	4-24-03	AS SHOWN	-

PROJECT INFORMATION
BANK OF AMERICA
SEC HORIZON ROAD (FM 3097) @ RIDGE ROAD (FM 740)
CITY OF ROCKWALL, TEXAS
LOT 5R, BLOCK A
HORIZON RIDGE ADDITION
E. TEAL SURVEY, ABSTRACT No. 207

ARCHITECT
THE SAMUEL GROUP
2906 MAPLE AVENUE, SUITE 202
DALLAS, TEXAS 75201
MR. ELLIOTT BAIRD
(214) 922-8012 PHONE
(214) 922-9689 FAX

THE SEAL APPEARING ON THIS DOCUMENT WAS AUTHORIZED BY RANDALL P. POGUE, P.E. 84780 ON 4-24-09 ALTERATION OF A SEALED DOCUMENT WITHOUT PROPER NOTIFICATION TO THE RESPONSIBLE ENGINEER IS AN OFFENSE UNDER THE TEXAS ENGINEERING PRACTICE ACT.

R.P.P. 42405



POGUE
ENGINEERING & DEVELOPMENT COMPANY, INC.

2111 ELDORADO PARKWAY
SUITE 101
MCKINNEY, TEXAS 75070

(214) 544-8880 PHONE
(214) 544-8882 FAX
randypogue@texcma.net

WATER & SANITARY SEWER PLAN

BANK OF AMERICA
1.0775 ACRES
LOT 5R, BLOCK A, HORIZON RIDGE ADDITION
CITY OF ROCKWALL, TEXAS

SHEET NO. C5.01