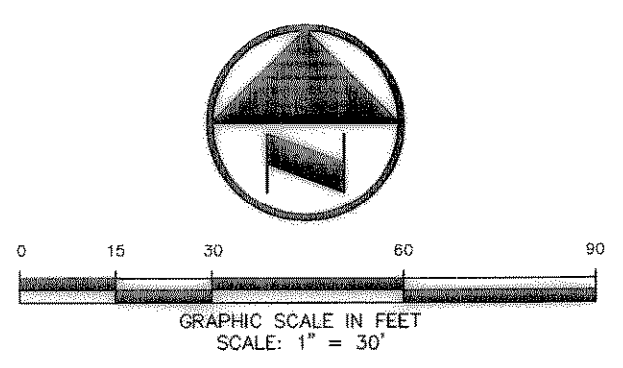
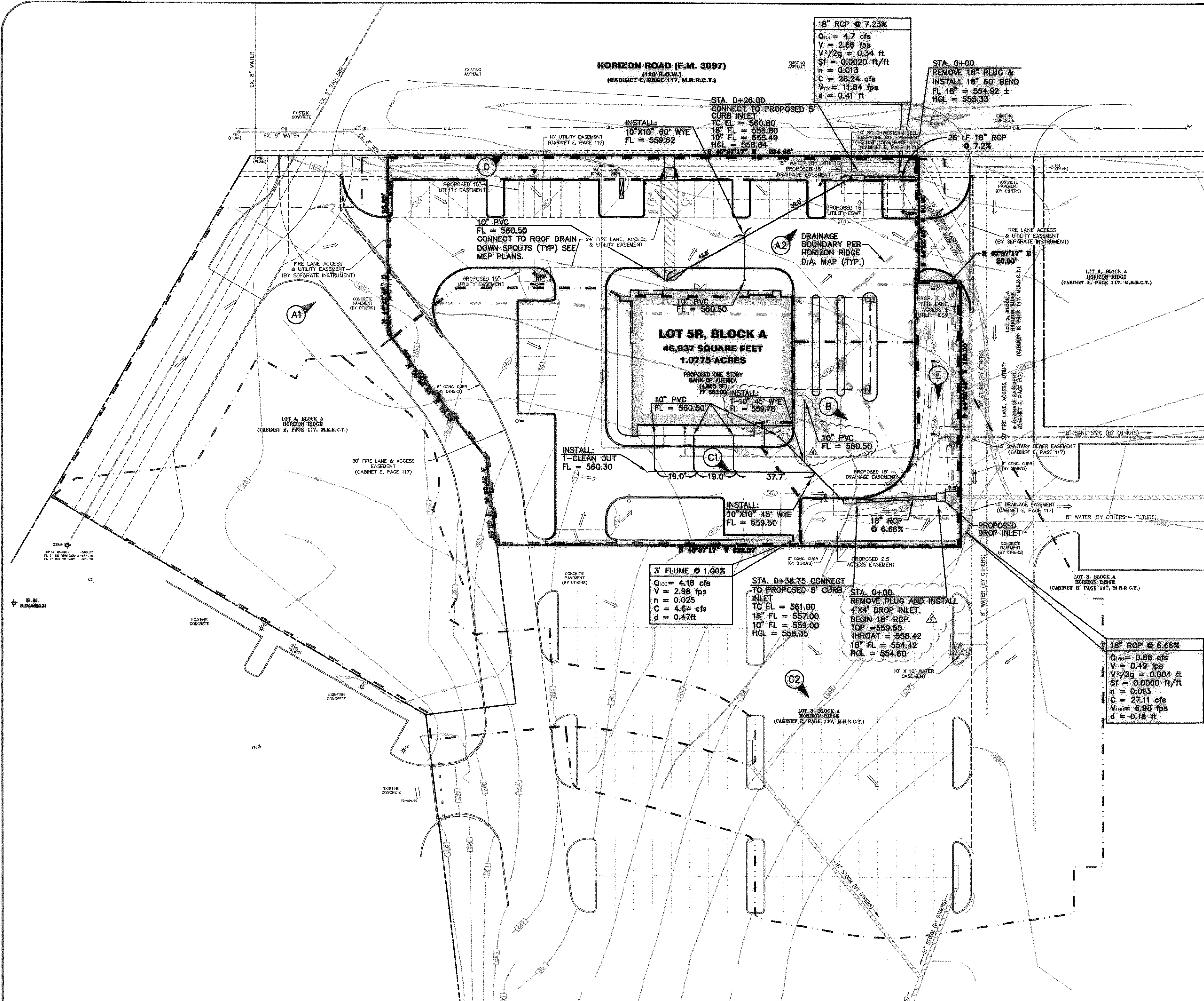


WILLIAMS 12/04/2003 - 11:38AM
 S:\005\1100-1199\1130-02-057\DWG\1130-02.DWG
 © POGUE ENGINEERING & DEVELOPMENT COMPANY, INC. 2006. ALL RIGHTS RESERVED. THE ENGINEERING DESIGN, DETAIL AND ENGINEERING DRAWINGS FOR THIS PROJECT AND/OR ORIGINAL PROJECT ARE THE LEGAL PROPERTY OF POGUE ENGINEERING & DEVELOPMENT COMPANY, INC. THEIR USE FOR REPRODUCTION, DISTRIBUTION, OR CONSTRUCTION IS PROHIBITED UNLESS AUTHORIZED IN WRITING BY POGUE ENGINEERING & DEVELOPMENT COMPANY, INC.



BASIS OF BEARINGS
 SOUTH R.O.W. LINE OF HORIZON ROAD
 S 46°37'17" E AS SHOWN ON PLAT
 HORIZON RIDGE ADDITION
 (CABINET E, PAGE 117, M.R.R.C.T.)

LEGEND

- B1 BOLLARD
- EM ELECTRIC METER
- PP POWER POLE
- LS LIGHT STANDARD
- WM WATER METER
- WV WATER VALVE
- ICV IRRIGATION CONTROL VALVE
- FH FIRE HYDRANT
- FDC FIRE DEPARTMENT CONNECTION
- CO CLEAN OUT
- MH MANHOLE
- GM GAS METER
- TSC TRAFFIC SIGNAL CONTROL
- TSP TRAFFIC SIGNAL POLE
- TELE TELEPHONE BOX
- TV TV BOX
- FP FLAG POLE
- PROPERTY LINE
- O.H. POWER LINES
- U/G TELEPHONE LINES
- WATER
- U/G WATER LINE
- GAS
- U/G GAS LINE
- FENCE
- 500 EXISTING CONTOURS
- PROPOSED CONTOURS
- PROPOSED CONTOURS FROM GRADING PLAN FOR HORIZON RIDGE ADDITION PREPARED BY LAWRENCE A. CATES & ASSOCIATES, INC.
- XXXXX EXISTING SPOT GRADES
- TO XXX.XX
G XXX.XX PROPOSED SPOT GRADES
- PROPOSED SPOT GRADES (BY OTHERS)
- PROPOSED EROSION CONTROL
- PROPOSED DRAINAGE DIVIDES
- PROPOSED DRAINAGE DIVIDES FROM DRAINAGE PLAN FOR HORIZON RIDGE ADDITION PREPARED BY LAWRENCE A. CATES & ASSOCIATES, INC. DATED 9-12-01



DRAINAGE AREA TABLE/CALCULATIONS							REMARKS
DA #	AREA	C	Tc	I100	Q100		
A1	0.25	0.80	10	9.8	1.96	5' CURB INLET	
A2	0.35	0.80	10	9.8	2.74	5' CURB INLET	
B	0.11	0.80	10	9.8	0.86	5' CURB INLET	
C1	0.45	0.80	10	9.8	3.53	3 FOOT FLUME	
C2	1.03	0.80	10	9.8	8.08	3 COMBO GRATE INLET (BY OTHERS)	
D	0.06	0.80	10	9.8	0.47	18" CULVERT (BY OTHERS)	
E	0.09	0.80	10	9.8	0.71	DROP INLET	

NOTE: DRAINAGE CALCULATIONS CORRESPOND TO DRAINAGE AREA MAP FOR HORIZON RIDGE ADDITION
 PREPARED BY LAWRENCE A. CATES & ASSOCIATES, INC., DATED 9-12-01.

DRAINAGE CRITERIA:
 Q100 = CIA
 Tc = 10 MIN. (DEVELOPED)
 C = 0.80 COMMERCIAL
 I100 = 9.8 (IN/HR) DEVELOPED
 A = AREA (ACRES)

CAUTION!!!
 UNDERGROUND UTILITIES ARE LOCATED IN THIS AREA. 48 HOURS PRIOR TO ANY CONSTRUCTION ACTIVITIES, CONTACT LOCAL LOCATES FOR FRANCHISE UTILITY INFO. CALL BEFORE YOU DIG.
 TEXAS EXCAVATION SAFETY SYSTEM (TESS)
 1-800-344-8377
 TEXAS ONE CALL SYSTEMS
 1-800-245-4545
 LONE STAR NOTIFICATION CENTER
 1-800-669-8344 EXT. 5
BEFORE YOU DIG...

BENCHMARK LIST:
 BENCHMARK #1
 CITY OF ROCKWALL CONTROL MONUMENT RESET #1 LOCATED WEST OF AN ENTRANCE INTO A BANK OFF OF SUMMER STREET WEST OF F.M. 740. ELEVATION = 567.70
 BENCHMARK #2
 SQUARE CUT ON TOP OF A CURB INLET LOCATED IN THE PARKING LOT NEAR THE NORTHEAST ENTRANCE TO THE WALGREEN'S STORE NEAR THE INTERSECTION OF F.M. 740 AND HORIZON ROAD. ELEVATION = 565.31

FRANCHISE UTILITY NOTES:
 1. ONCOR ELECTRIC & GAS - CONTACT BRIAN HUGHES @ (972) 771-3979
 2. SOUTHWESTERN BELL TELEPHONE - (214) 320-5307
 4-24-09 ALTERATION OF A SEALED DOCUMENT WITHOUT PROPER NOTIFICATION TO THE RESPONSIBLE ENGINEER IS AN OFFENSE UNDER THE TEXAS ENGINEERING PRACTICE ACT.

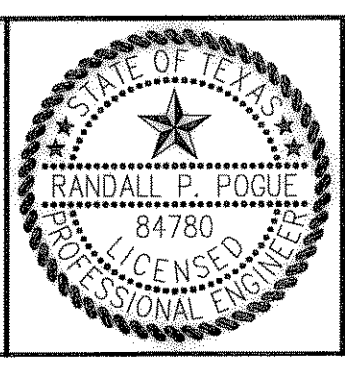
NO.	DATE	REVISION / DESCRIPTION
4	8-19-03	COORDINATION
1	5-21-03	REVISED PER CITY COMMENTS

DESIGN	DRAWN	DATE	SCALE	NOTES
RPP	EMS	4-24-03	AS SHOWN	-

PROJECT INFORMATION
 BANK OF AMERICA
 SEC HORIZON ROAD (FM 3097) @ RIDGE ROAD (FM 740)
 CITY OF ROCKWALL, TEXAS
 1.0775 ACRE TRACT
 HORIZON RIDGE ADDITION
 E. TEAL SURVEY, ABSTRACT No. 207

ARCHITECT
 THE SAMUEL GROUP
 2906 MAPLE AVENUE, SUITE 202
 DALLAS, TEXAS 75201
 MR. ELLIOTT BAIRD
 (214) 922-8012 PHONE
 (214) 922-9689 FAX

THE SEAL APPEARING ON THIS DOCUMENT WAS AUTHORIZED BY RANDALL P. POGUE, P.E. 84780 ON 4-24-09. ALTERATION OF A SEALED DOCUMENT WITHOUT PROPER NOTIFICATION TO THE RESPONSIBLE ENGINEER IS AN OFFENSE UNDER THE TEXAS ENGINEERING PRACTICE ACT.



POGUE
 ENGINEERING & DEVELOPMENT COMPANY, INC.
 2111 ELDORADO PARKWAY
 SUITE 101
 MCKINNEY, TEXAS 75070
 (214) 544-8880 PHONE
 (214) 544-8882 FAX
 randypogue@txema.net

DRAINAGE & STORM SEWER PLAN
 BANK OF AMERICA
 1.0775 ACRES
 E. TEAL SURVEY, ABSTRACT No. 207
 CITY OF ROCKWALL, TEXAS

SHEET NO.
C2.01