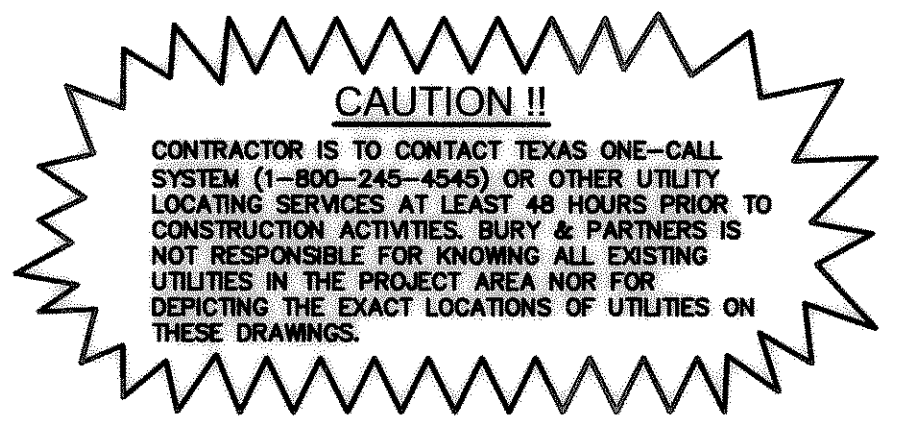
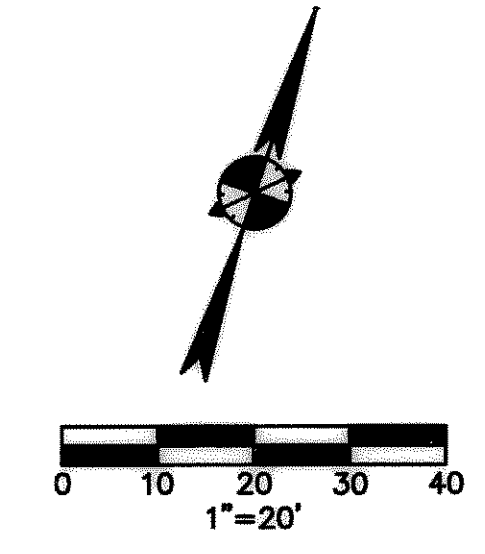


- NOTES:
- PAYMENT TO THE CONTRACTOR FOR REPLACEMENT OF PAVEMENT AND/OR DRIVEWAYS WILL BE BASED ON ACTUAL MEASUREMENTS UP TO A MAXIMUM WIDTH EQUAL TO THE SPECIFIED MAXIMUM TRENCH WIDTH (PER STD. SPEC. ITEM 6.2.) PLUS 2 FEET. ANY EXISTING PAVEMENT DAMAGED OR REMOVED IN EXCESS OF THE MAXIMUM LIMITS SHALL BE AT THE EXPENSE OF THE CONTRACTOR.
 - WHEN REMOVING CONCRETE PAVEMENT THE CONTRACTOR SHALL ENDEAVOR TO LIMIT DAMAGE TO EXISTING REINFORCEMENT SO IT MAY BE EMPLOYED IN THE REPLACEMENT OPERATION. IF ORIGINAL REINFORCEMENT IS CUT OR BROKEN, REPLACEMENT BARS OF THE SAME SIZE SHALL BE INSTALLED BY DRILLING AND DOWELLING AS DIRECTED BY THE OWNER.

PAVEMENT CUTS REMOVAL AND REPLACEMENT	North Central Team Council of Governments	STANDARD SPECIFICATION REFERENCE
		6.5
	DATE	STANDARD DRAWING NO.
	NOV '96	3070



Prilal Aliezi
7/25/2005
RECORD DRAWING



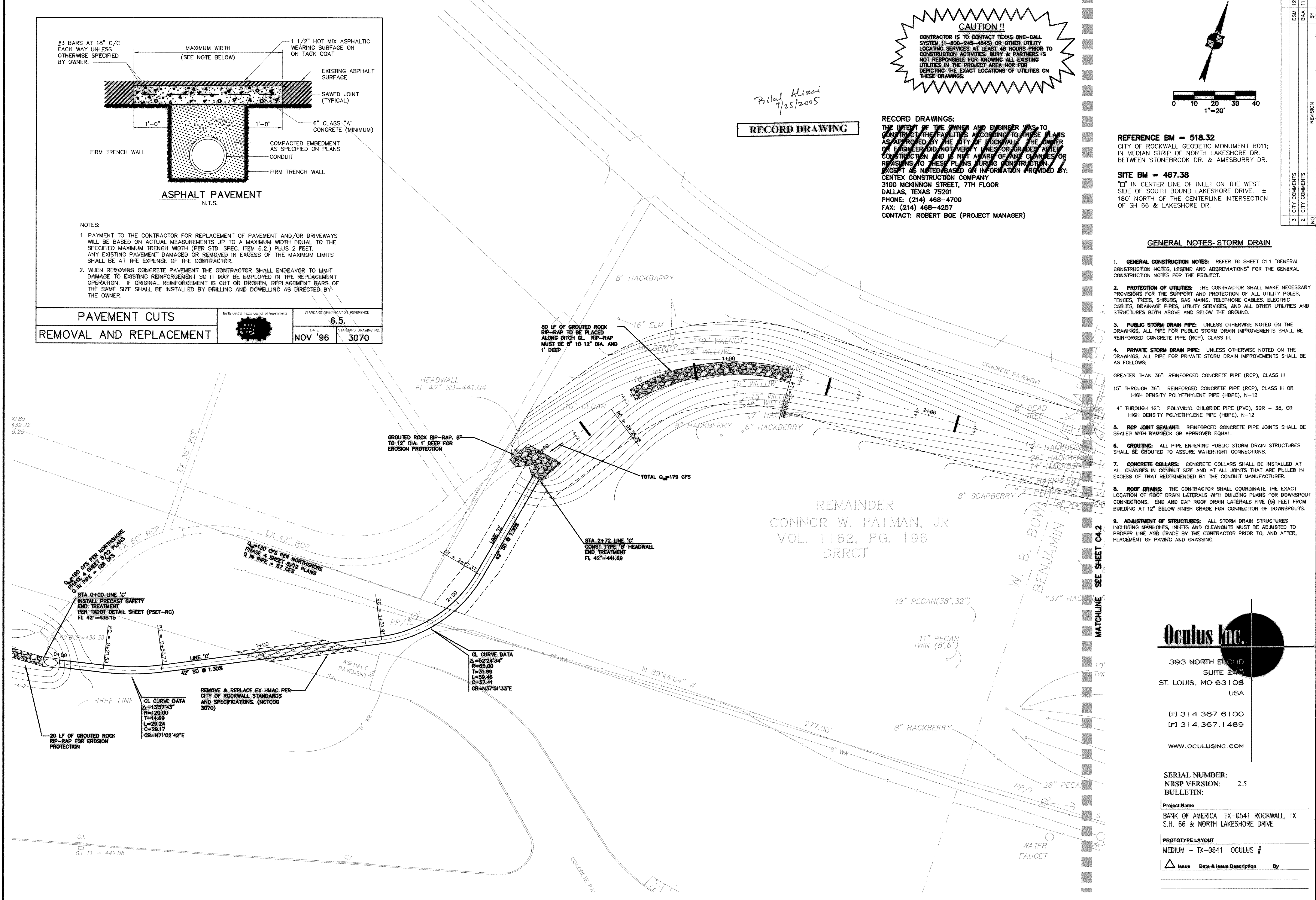
RECORD DRAWINGS:
THE INTENT OF THE OWNER AND ENGINEER WAS TO CONSTRUCT THE FACILITIES ACCORDING TO THESE PLANS AS APPROVED BY THE CITY OF ROCKWALL. THE OWNER OR ENGINEER DID NOT VERIFY LINES OR GRADES AFTER CONSTRUCTION AND IS NOT AWARE OF ANY CHANGES OR REVISIONS TO THESE PLANS DURING CONSTRUCTION. THIS IS NOTED BASED ON INFORMATION PROVIDED BY: CENTEX CONSTRUCTION COMPANY
3100 MCKINNON STREET, 7TH FLOOR
DALLAS, TEXAS 75201
PHONE: (214) 468-4700
FAX: (214) 468-4257
CONTACT: ROBERT BOE (PROJECT MANAGER)

REFERENCE BM = 518.32
CITY OF ROCKWALL GEODETIC MONUMENT R011; IN MEDIUM STRIP OF NORTH LAKESHORE DR. BETWEEN STONEBROOK DR. & AMESBURY DR.

SITE BM = 467.38
1\"/>

GENERAL NOTES-STORM DRAIN

- GENERAL CONSTRUCTION NOTES:** REFER TO SHEET C1.1 "GENERAL CONSTRUCTION NOTES, LEGEND AND ABBREVIATIONS" FOR THE GENERAL CONSTRUCTION NOTES FOR THE PROJECT.
- PROTECTION OF UTILITIES:** THE CONTRACTOR SHALL MAKE NECESSARY PROVISIONS FOR THE SUPPORT AND PROTECTION OF ALL UTILITY POLES, FENCES, TREES, SHRUBS, GAS MAINS, TELEPHONE CABLES, ELECTRIC CABLES, DRAINAGE PIPES, UTILITY SERVICES, AND ALL OTHER UTILITIES AND STRUCTURES BOTH ABOVE AND BELOW THE GROUND.
- PUBLIC STORM DRAIN PIPE:** UNLESS OTHERWISE NOTED ON THE DRAWINGS, ALL PIPE FOR PUBLIC STORM DRAIN IMPROVEMENTS SHALL BE REINFORCED CONCRETE PIPE (RCP), CLASS III.
- PRIVATE STORM DRAIN PIPE:** UNLESS OTHERWISE NOTED ON THE DRAWINGS, ALL PIPE FOR PRIVATE STORM DRAIN IMPROVEMENTS SHALL BE AS FOLLOWS:
GREATER THAN 36": REINFORCED CONCRETE PIPE (RCP), CLASS III
15" THROUGH 36": REINFORCED CONCRETE PIPE (RCP), CLASS III OR HIGH DENSITY POLYETHYLENE PIPE (HDPE), N-12
4" THROUGH 12": POLYVINYL CHLORIDE PIPE (PVC), SDR - 35, OR HIGH DENSITY POLYETHYLENE PIPE (HDPE), N-12
- RCP JOINT SEALANT:** REINFORCED CONCRETE PIPE JOINTS SHALL BE SEALED WITH RAMNECK OR APPROVED EQUAL.
- GROUTING:** ALL PIPE ENTERING PUBLIC STORM DRAIN STRUCTURES SHALL BE GROUTED TO ASSURE WATERTIGHT CONNECTIONS.
- CONCRETE COLLARS:** CONCRETE COLLARS SHALL BE INSTALLED AT ALL CHANGES IN CONDUIT SIZE AND AT ALL JOINTS THAT ARE PULLED IN EXCESS OF THAT RECOMMENDED BY THE CONDUIT MANUFACTURER.
- ROOF DRAINS:** THE CONTRACTOR SHALL COORDINATE THE EXACT LOCATION OF ROOF DRAIN LATERALS WITH BUILDING PLANS FOR DOWNSPOUT CONNECTIONS. END AND CAP ROOF DRAIN LATERALS FIVE (5) FEET FROM BUILDING AT 12" BELOW FINISH GRADE FOR CONNECTION OF DOWNSPOUTS.
- ADJUSTMENT OF STRUCTURES:** ALL STORM DRAIN STRUCTURES INCLUDING MANHOLES, INLETS AND CLEANOUTS MUST BE ADJUSTED TO PROPER LINE AND GRADE BY THE CONTRACTOR PRIOR TO, AND AFTER, PLACEMENT OF PAVING AND GRASSING.



REMAINDER
CONNOR W. PATMAN, JR
VOL. 1162, PG. 196
DRRCT

393 NORTH EUCLID
SUITE 2310
ST. LOUIS, MO 63108
USA

[T] 314.367.6100
[F] 314.367.1489

WWW.OCULUSINC.COM

SERIAL NUMBER:
NRSP VERSION: 2.5
BULLETIN:

Project Name
BANK OF AMERICA TX-0541 ROCKWALL, TX
S.H. 66 & NORTH LAKESHORE DRIVE

PROTOTYPE LAYOUT
MEDIUM - TX-0541 OCULUS #

Issue	Date & Issue Description	By

DSM	12/15/04	BY	DATE
BAA	11/18/04	BY	DATE
REVISION			
3	CITY COMMENTS	NO.	
2	CITY COMMENTS	NO.	

Bury & Partners
ENGINEERING SOLUTIONS
5310 HARVEST HILL ROAD, SUITE 100
DALLAS, TEXAS 75230
Tel: (972) 981-0011 Fax: (972) 981-0278
Bury & Partners-INC. © Copyright 2004

OFFSITE STORM DRAIN PLAN

BANK OF AMERICA TX-0541
LOT 2, BLOCK A, BOWLES ADDN.
S.H. 66 & N. LAKESHORE DRIVE
ROCKWALL, TX

Scale: 1"=20'
Date: 7-8-05
Designed By: BAA
Drawn By: DSM
Checked By: PMH
File: F:\3332-08\33208STM.DWG
Project No.: 30332-08

SHEET
C4.3