



Kimley-Horn
and Associates, Inc.

October 12, 2011

Jeff Persful
Construction Inspector
City of Rockwall, Engineering Department

12700 Park Central Drive
Suite 1800
Dallas, Texas
75251-1516

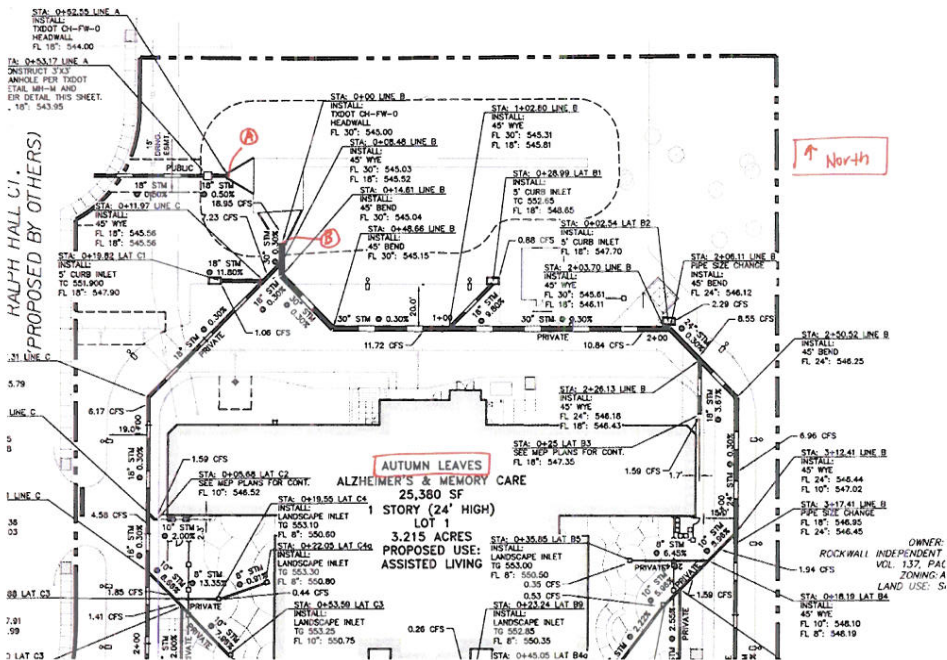
Re: Autumn Leaves Development
Storm Sewer Outfall Coordinates

Dear Mr. Persful,

As requested, there are two outfalls located on the above mentioned project. The letters below correspond with the exhibit below.

Storm Outfall Coordinates:

Location A	Location B
X: 2594754.6897	X: 2594795.1716
Y: 7015575.8575	Y: 7015573.4937
Z: 543.90	Z: 544.69



Sincerely,
KIMLEY-HORN AND ASSOCIATES, INC.

Hilleg VonAhsen
Hilleg VonAhsen, P.E. 10-12-2011