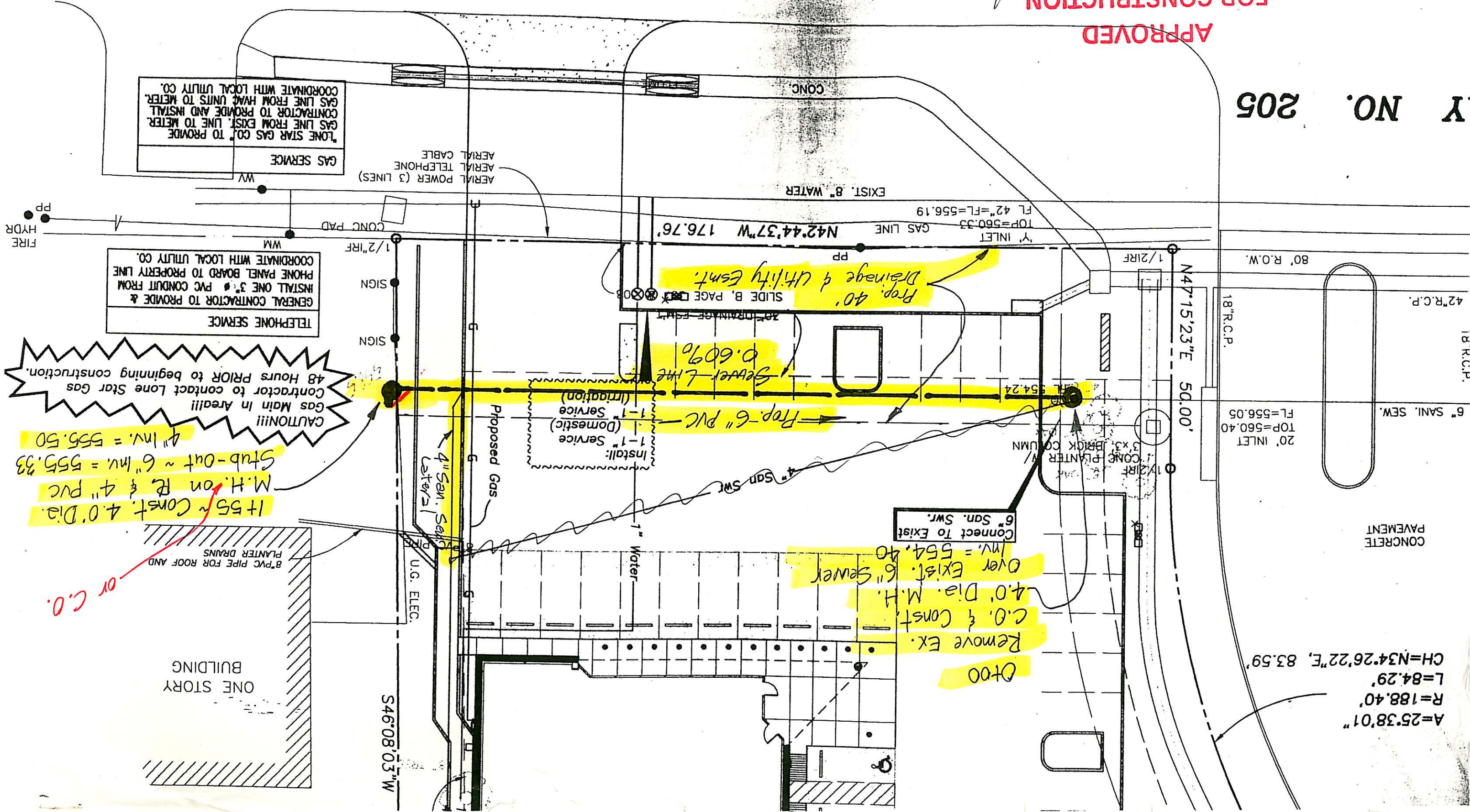


DATE 1/7/98
 ENGINEERING DEPT.
 FOR CONSTRUCTION

APPROVED

Y NO. 205



CONCRETE PAVEMENT

ONE STORY BUILDING

S46'08'03"W

GAS SERVICE
 LONE STAR GAS CO. TO PROVIDE GAS LINE FROM EXIST. LINE TO METER. CONTRACTOR TO PROVIDE AND INSTALL GAS LINE FROM HVAC UNITS TO METER. COORDINATE WITH LOCAL UTILITY CO.

TELEPHONE SERVICE
 GENERAL CONTRACTOR TO PROVIDE & INSTALL ONE 3" PVC CONDUIT FROM PHONE PANEL BOARD TO PROPERTY LINE. COORDINATE WITH LOCAL UTILITY CO.

CAUTION!!!
 Gas Main in Area!!!
 Contractor to contact Lone Star Gas 48 Hours PRIOR to beginning construction.

8" PVC PIPE FOR ROOF AND PLANTER DRAINS

CONCRETE ASPHALT

EXIST. 8" WATER

GAS LINE TOP=560.33 FL 42"=FL=556.19

20' INLET TOP=560.40 FL=556.05

6" San. Swr. Connect To Exist

Inv. = 554.40 Over Exist. 6" Sewer

Remove Ex. C.O. & Const. 4.0' Dia. M.H.

D100

A=25'38.01"

R=188.40'

L=84.29'

CH=N34.26'22"E, 83.59'