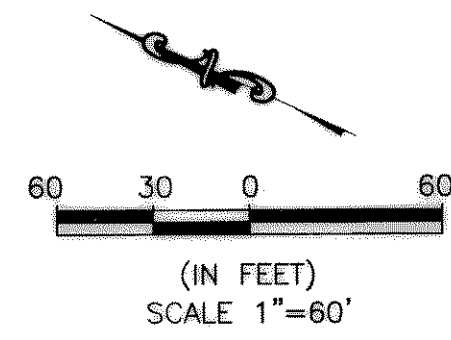


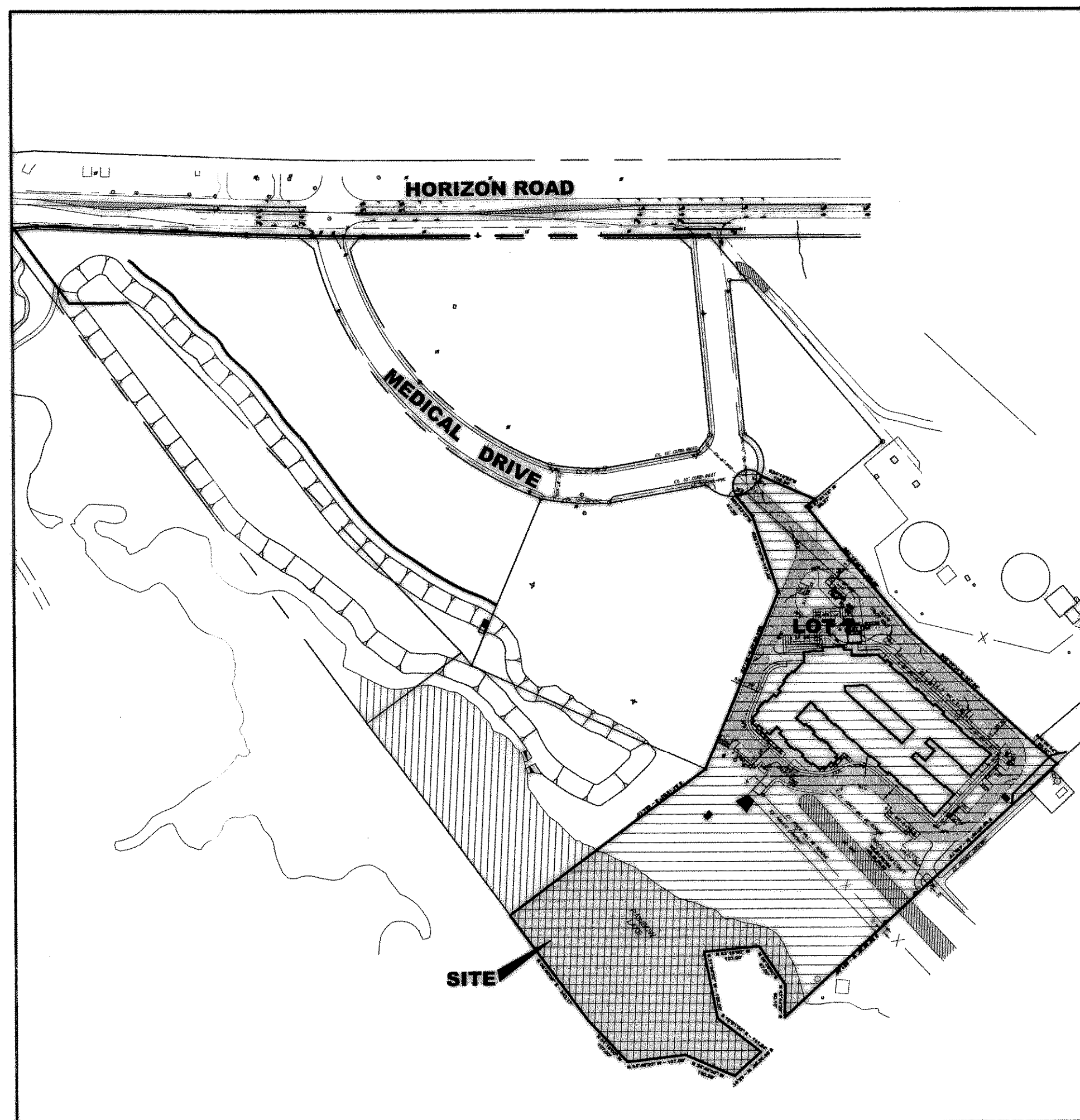
LOCATION MAP  
N.T.S.



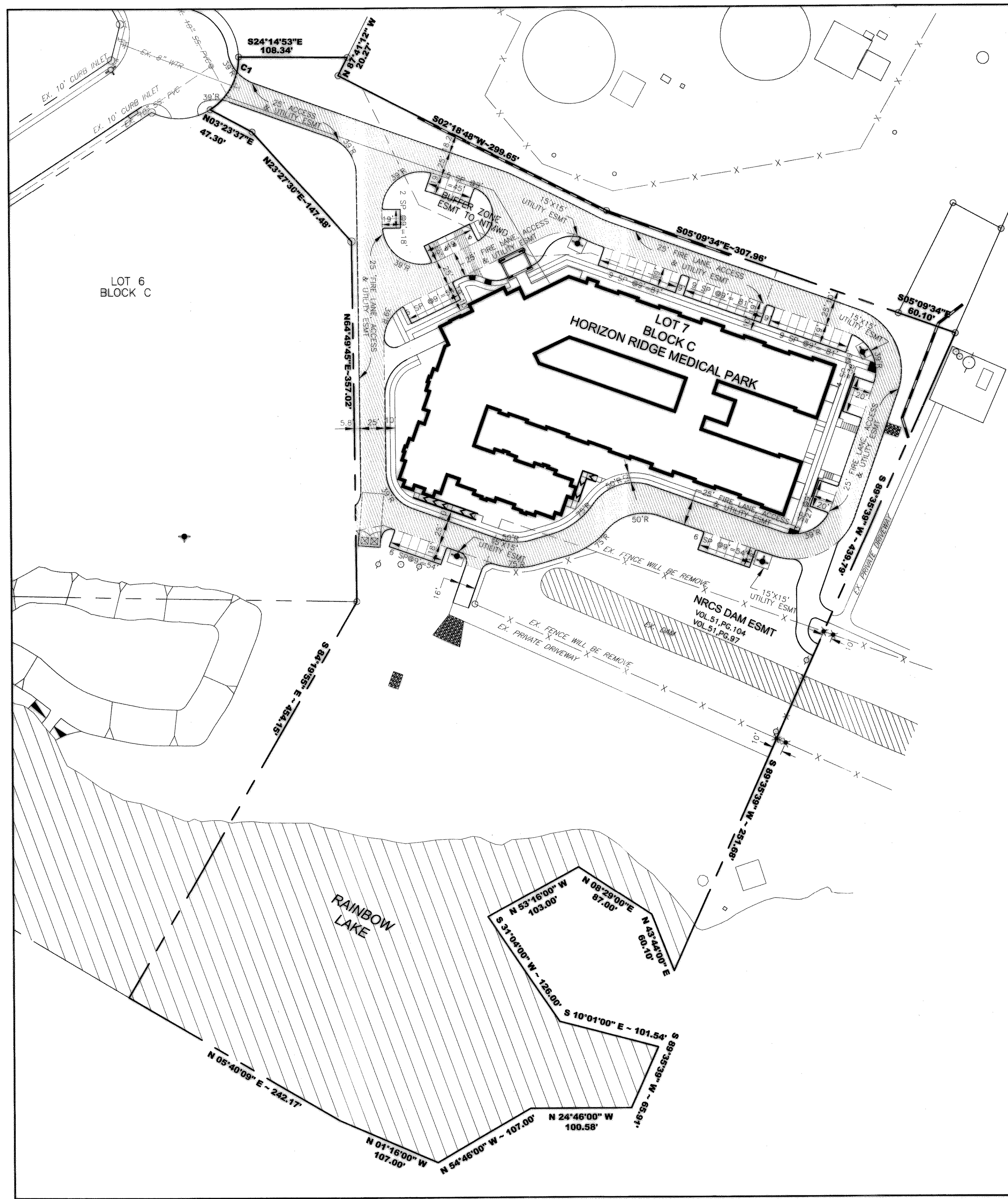
CURVE TABLE						
CURVE	DELTA	R	T	L	CH	CHD
C1	59°08'24"	60.00'	34.04'	61.93'	S85°46'15"E	59.22'

**PROJECT SUMMARY**

AREA	456,891 SF (10.488 AC)
ZONING	PD-9
BLDG AREA	54,107 SF
USE	ASSISTED LIVING
BED	72 BEDS
EMPLOYEE	24
PARKING SPACE REQUIRED (1 PER 6 BEDS PLUS 1 SP PER EMPLOYEE)	37 SPACES
STANDARD PARKING SPACE PROVIDED	59 SPACES
HANDICAP PARKING SPACE PROVIDED	4 SPACES
TOTAL PARKING SPACE PROVIDED	63 SPACES
LANDSCAPING REQUIRED	45,689 SF. (10%)
LANDSCAPING PROVIDED	376,772 SF. (82%)



SITE LOCATION  
1:200



**SITE LEGEND**

- EXIST. FIRE HYDRANT
- PROP. FIRE HYDRANT
- DUMPSTER
- GROUDED RIPRAP
- RETAINING WALL (BY OTHER)
- PROP. 8" REINF PVMT

**NOTES:**

MARK FIRE LANE TO CITY SPECIFICATION. "NO PARKING FIRE LANE" EVERY 25' WHITE 4" LETTERS ON A 6" RED STRIPED BACKGROUND

**AS BUILT**

THIS IS TO CERTIFY THAT CHANGES AND CORRECTIONS HAVE BEEN MADE TO CONFORM TO THE CONTRACTOR'S RECORD OF THIS PROJECT.



REVISION NO.	DESCRIPTION	DATE	BY

<b>SITE PLAN</b>			
LOT 7, BLOCK C HORIZON RIDGE MEDICAL PARK ARBOR HOUSE ASSISTED LIVING 2401 TEE CIRCLE, SUITE 103, NORMAN, OK 73069 (405) 801-2879			
PSA ENGINEERING 17819 DAVENPORT ROAD, SUITE 215 DALLAS, TX 75252 (972) 248-9651			
DESIGN	DRAWN	DATE	SCALE
PSA	PSA	06/15/09	AS SHOWN
CHECK	FILE	NO.	
PSS	2745.AHR	C-1	