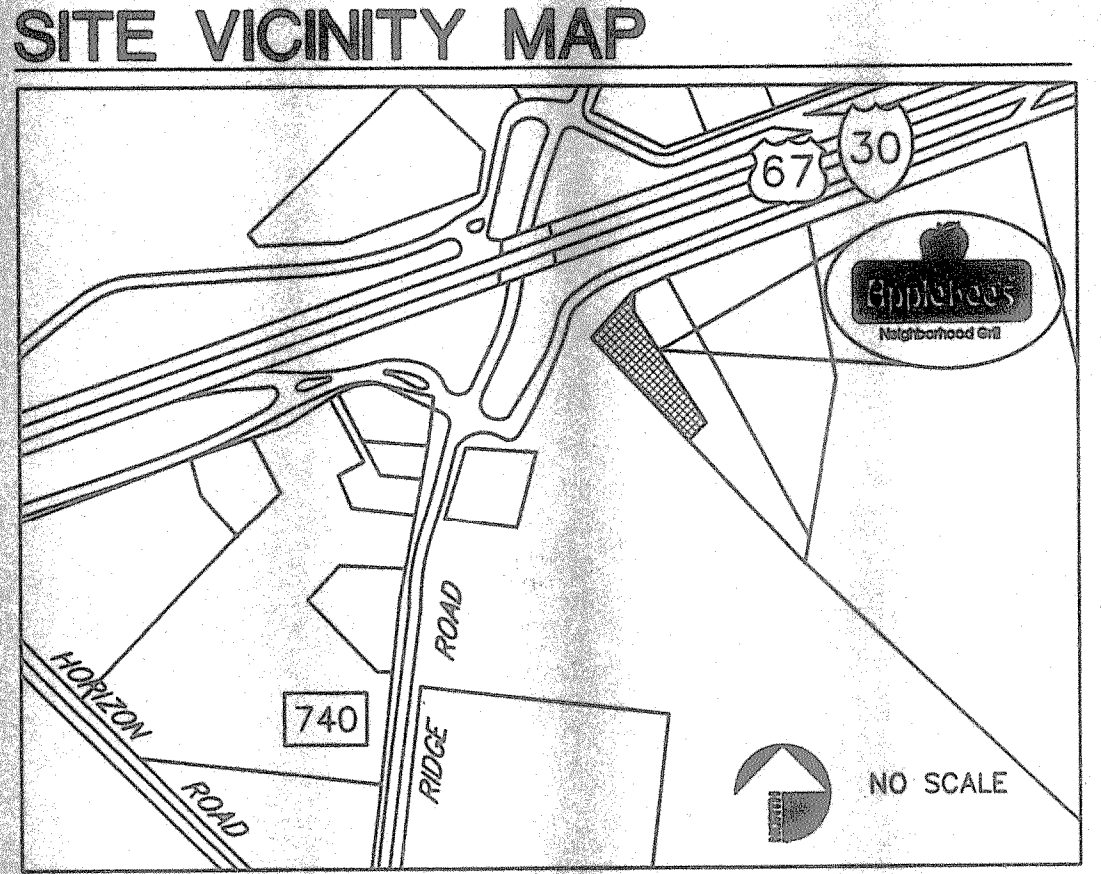
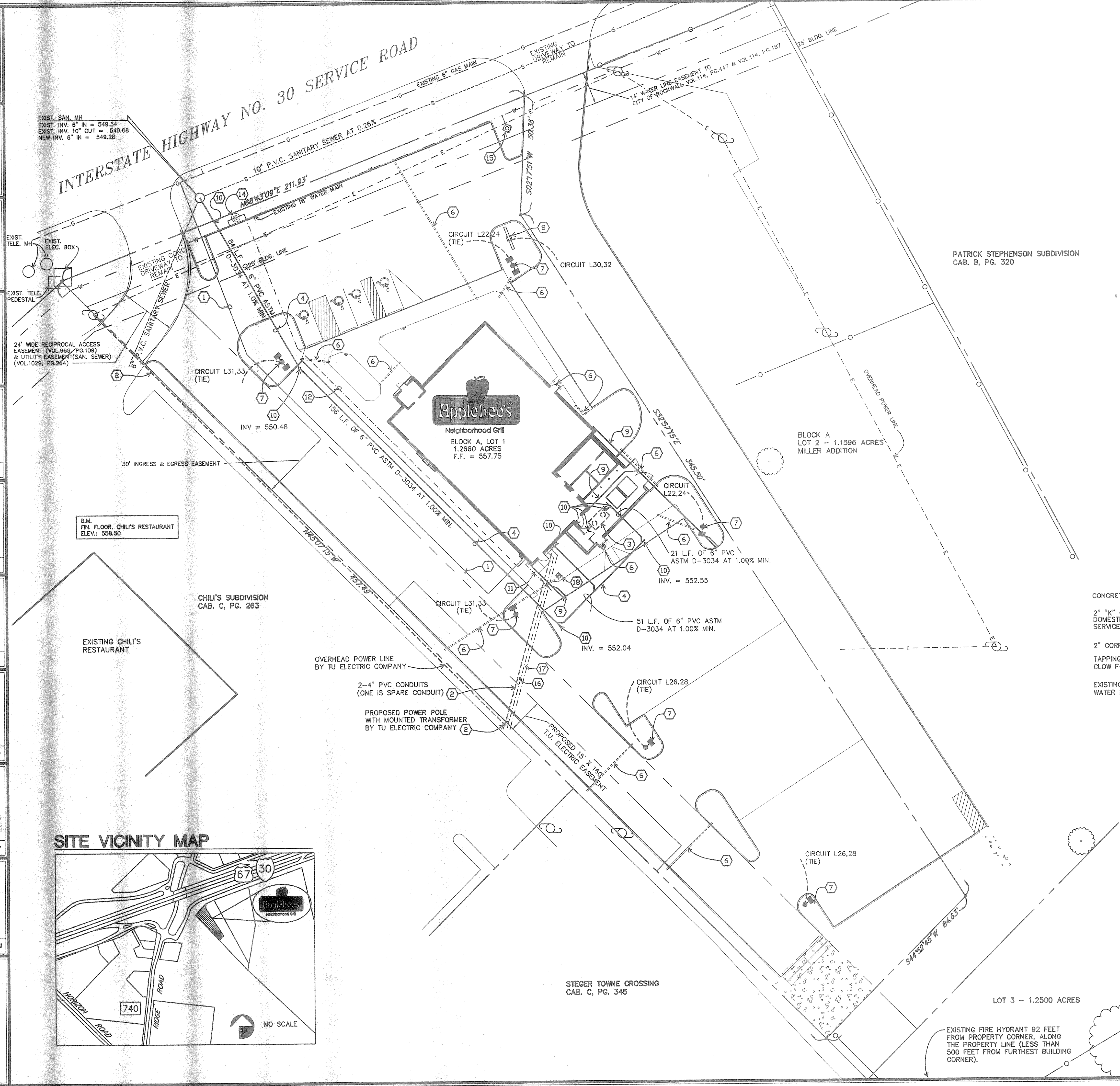


19	20
17	18
15	16
13	14
11	12
9	10
7	8
5	6
3	4
1	2

ITEMIZED SHEET REVISIONS

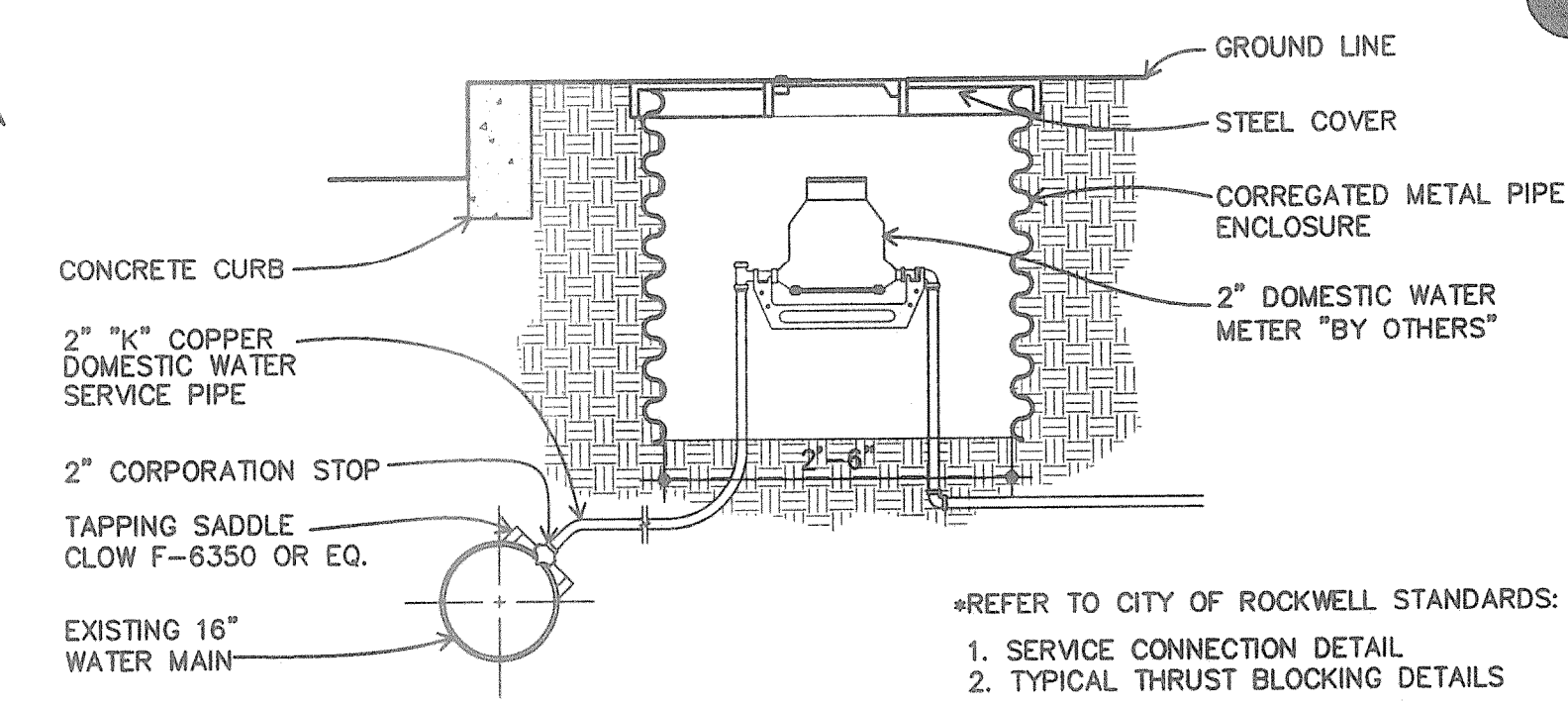
EXIST. SAN. MH
 EXIST. INV. 6" IN = 549.34
 EXIST. INV. 10" OUT = 549.08
 NEW INV. 6" IN = 549.28

INTERSTATE HIGHWAY NO. 30 SERVICE ROAD

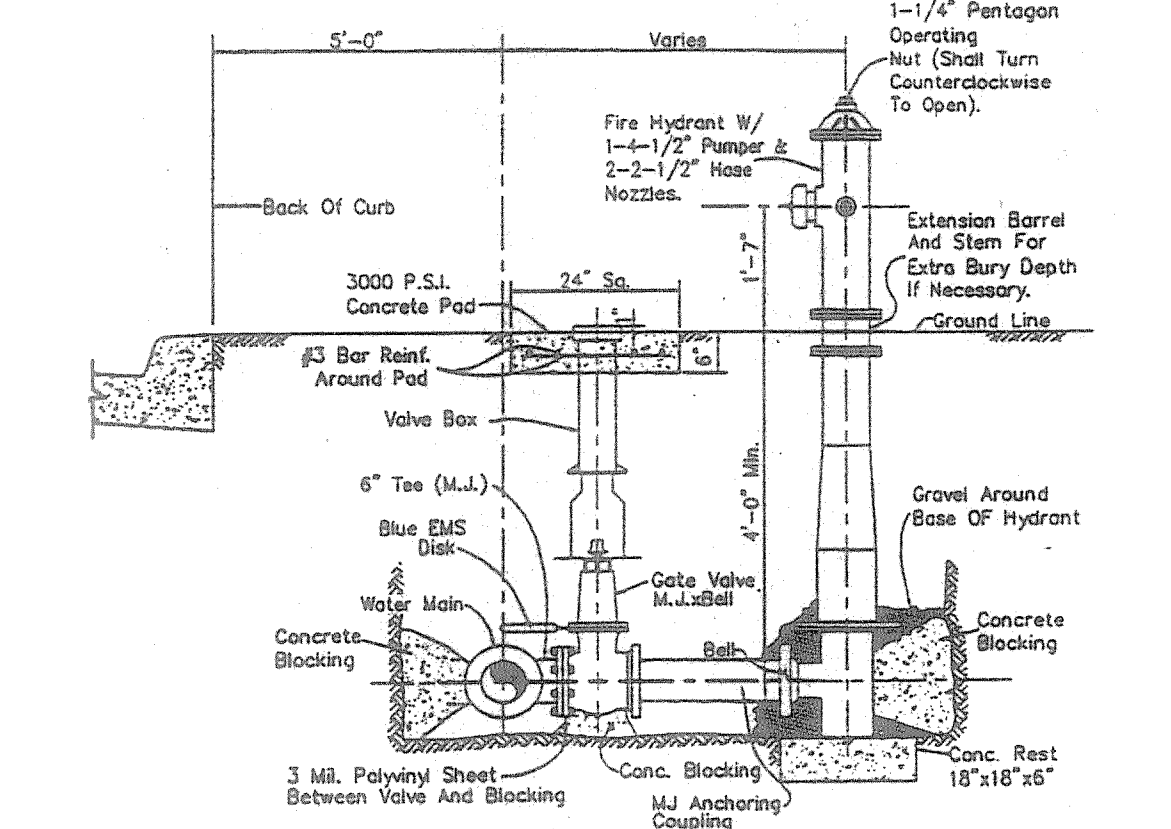


KEYED NOTES

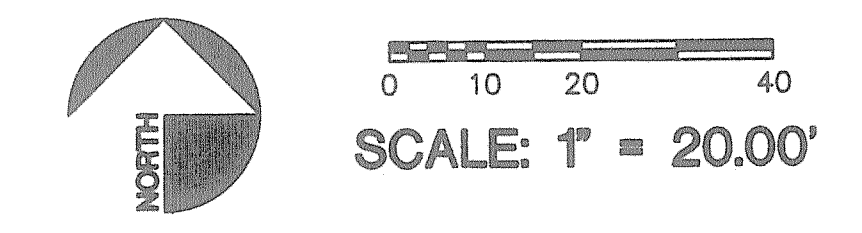
- 1 GAS LINE TO BE SIZED BY GAS COMPANY. RUN LINE FROM METER TO EXISTING GAS MAIN PER RECOMMENDATIONS OF GAS COMPANY. ALL MATERIALS AND INSTALLATION ARE TO BE IN ACCORDANCE WITH ALL STATE AND LOCAL CODES AND N.F.P.A. STANDARDS. INCLUDE TWO GUARD POSTS AT METER LOCATION. GAS COMPANY TO SUPPLY METER AND LINE UP TO 100 FEET.
- 2 TU ELECTRIC COMPANY SHALL BRING OVERHEAD ELECTRIC LINE FROM EXISTING POWER POLE TO PROPOSED POWER POLE WITH MOUNTED TRANSFORMER. ELECTRICAL CONTRACTOR SHALL THEN PROVIDE AND COMPLETE 2-4" PVC CONDUITS TO BUILDING AS OUTLINED IN THE TU ELECTRIC SPECIFICATIONS FOR CUSTOMER INSTALLED UNDERGROUND DISTRIBUTION FROM OVERHEAD TRANSFORMATION GENERAL SERVICE. VERIFY WITH TU ELECTRIC EXACT LOCATION OF PROPOSED POWER POLE.
- 3 INSTALL GREASE INTERCEPTOR PER ALL GOVERNING CODES. SET LID FLUSH WITH GRADE. SEE ARCHITECTURAL DRAWINGS.
- 4 6" P.V.C. ASTM D-3034 SANITARY SEWER.
- 5 DELETED
- 6 4" SCHEDULE 40 P.V.C. SLEEVE FOR IRRIGATION LINE. CONTRACTOR TO FLAG END OF SLEEVES.
- 7 SITE LIGHT. PROVIDE 1" P.V.C. CONDUIT BACK TO PANEL "L", SEE DETAIL C5-1-01 CIRCUIT AS SHOWN.
- 8 SITE SIGN. PROVIDE 1 1/2" P.V.C. CONDUIT BACK TO PANEL "L" CIRCUIT AS SHOWN.
- 9 6" P.V.C. DRAIN FROM ROOF SCUPPER. USE P.V.C. BOOT AND EXTEND PIPE FROM BUILDING DOWNSPOUT UNDER SIDEWALK THROUGH FACE OF CURB. SEE DETAILS C6-09 & C6-06
- 10 CLEAN OUT PER DETAIL C6-03.
- 11 1 1/2" IRRIGATION WATER LINE.
- 12 2" "K" COPPER WATER LINE. FOR DOMESTIC WATER SERVICE PER ALL GOVERNING CODES. CONTRACTOR MUST VERIFY REQUIREMENTS OF LOCAL CODES, UTILITY COMPANIES AND GOVERNING OFFICIALS. INCLUDE IN BASE BID. ALL ADDITIONAL VALVES, PIPING, STRUCTURES, ETC., THAT WILL BE REQUIRED. INCLUDE GATE VALVE AND WELL AT MAIN LINE, TAP LOCATION.
- 13 DELETED
- 14 NEW 18" DIAMETER X 16" DEEP METER VAULT FOR DOMESTIC METER. USE BROOKS MV 4676-802-5 DALLAS FM METER VAULT, AS MANUFACTURED BY BROOKS PRODUCTS OR APPROVED EQUAL THAT COMPLIES TO ALL CITY OF ROCKWALL CODES AND STANDARDS. SEE DETAIL C5-01
- 15 NEW FIRE HYDRANT BY G.C., REFER TO DETAIL C5-02
- 16 2" PVC CONDUIT FOR CABLE TELEVISION SERVICE. CONTRACTOR SHALL COORDINATE WITH THE LOCAL CABLE COMPANY AND VERIFY POINT OF CONNECTION AND ORIGIN OF SERVICE. REFER TO ELECTRICAL SHEETS FOR MORE INFORMATION.
- 17 2" PVC CONDUIT FOR TELEPHONE SERVICE. CONTRACTOR SHALL COORDINATE WITH THE LOCAL PHONE COMPANY AND VERIFY POINT OF CONNECTION AND ORIGIN OF SERVICE. REFER TO ELECTRICAL SHEETS FOR MORE INFORMATION.
- 18 DOUBLE CHECK VALVE FOR LANDSCAPE IRRIGATION SYSTEM.



C5-01 METER PIT SECTION
SCALE: N.T.S.

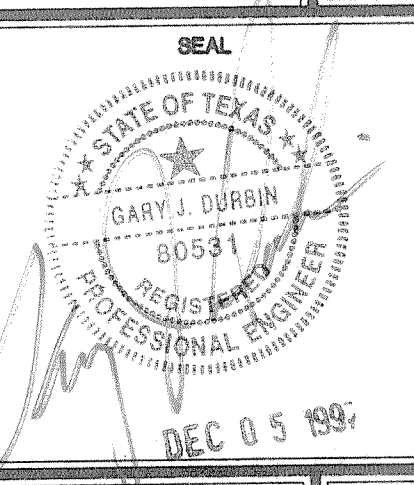
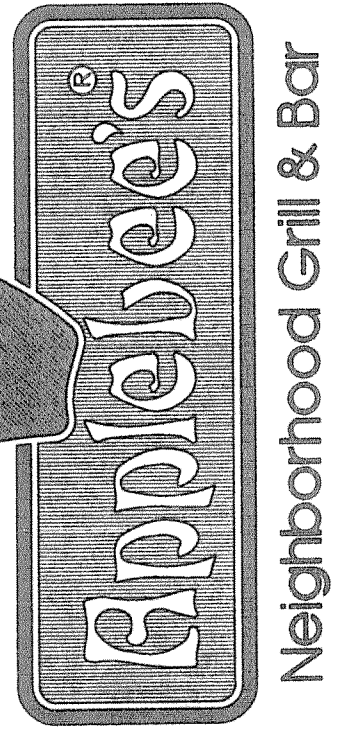


C5-02 FIRE HYDRANT INSTALLATION
SCALE: N.T.S.



Wolfgang Doerschlag Architect
 PH: (814) 221-0840
 FAX: (814) 221-2464

Gary J. Durbin, P.E.
 860 MICHIGAN AVENUE
 COLUMBUS, OHIO 43215



REVISIONS

1	MAY 16/97
2	MAY 27/97
4	JUN 25/97
5	JULY 9/97
6	JULY 18/97
9	AUG. 20/97

As-built 12/4/97

PROJECT NUMBER
6.718

SHEET NUMBER
C5

ROCKWALL, TEXAS
 INTERSTATE HWY. 30
 SITE UTILITIES PLAN