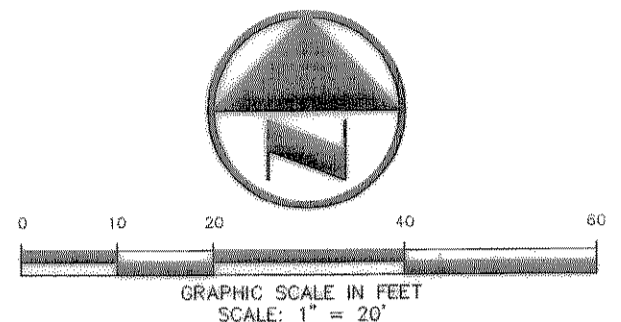
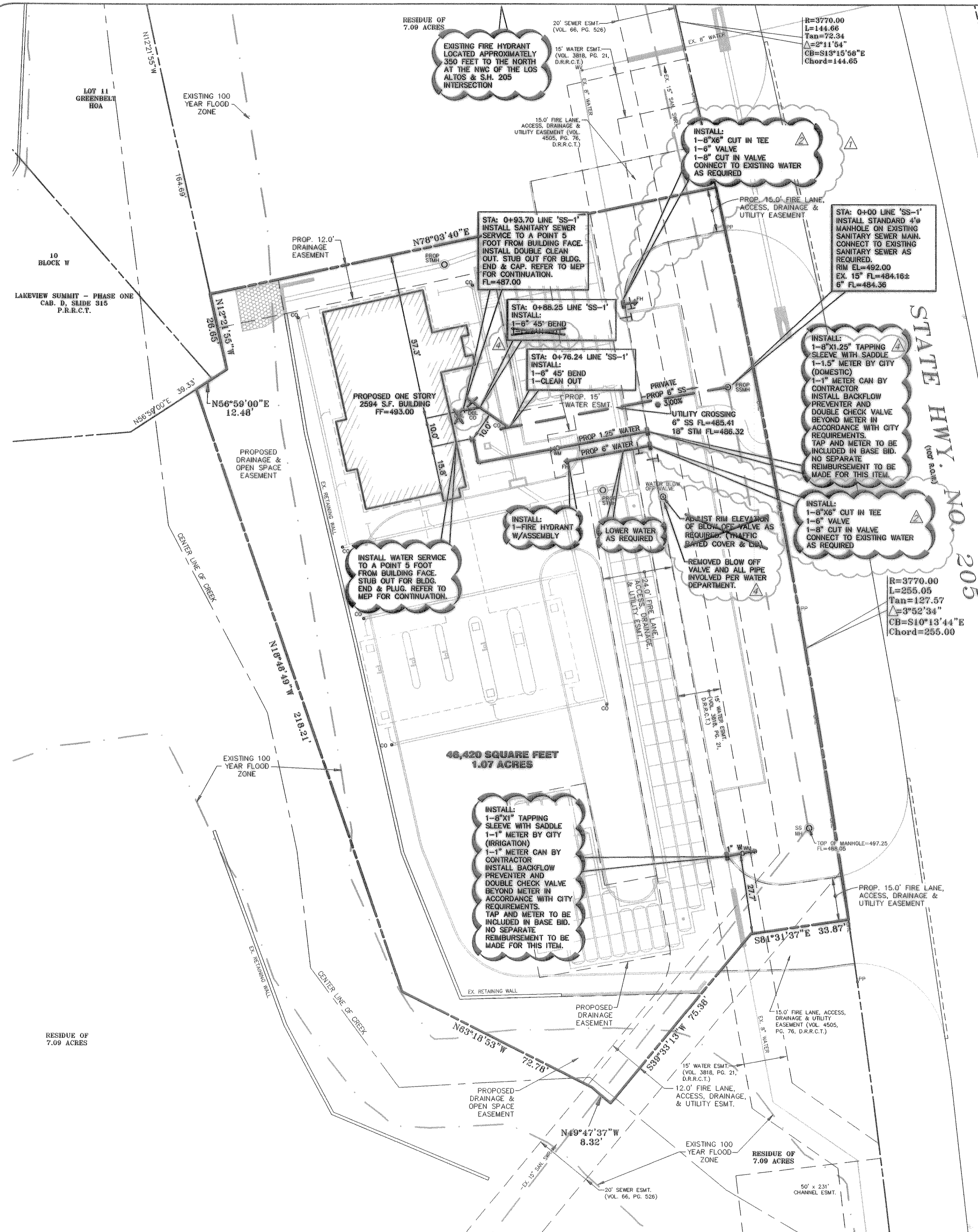


WILLIAMS 10/17/2006 - 10:16AM  
 S:\JOBS\1200-1269\1269-06-015.DWG\1269-07A.DWG  
 © POGUE ENGINEERING & DEVELOPMENT COMPANY, INC. 2006. ALL RIGHTS RESERVED. THE ENGINEERING DESIGN, DETAIL AND ENGINEERING DRAWINGS FOR THIS PROJECT AND/OR OVERALL PROJECT ARE THE LEGAL PROPERTY OF POGUE ENGINEERING & DEVELOPMENT COMPANY, INC. THEIR USE FOR REPRODUCTION, CONSTRUCTION, OR DISTRIBUTION IS PROHIBITED UNLESS AUTHORIZED IN WRITING BY POGUE ENGINEERING & DEVELOPMENT COMPANY, INC.



**LEGEND**

BL	BOLLARD
EM	ELECTRIC METER
FP	POWER POLE
LS	LIGHT STANDARD
WM	WATER METER
WV	WATER VALVE
ICV	IRRIGATION CONTROL VALVE
FD	FIRE HYDRANT
FDC	FIRE DEPARTMENT CONNECTION
CO	CLEAN OUT
MH	MANHOLE
GM	GAS METER
TSC	TRAFFIC SIGNAL CONTROL
TSF	TRAFFIC SIGNAL POLE
SG	TRAFFIC SIGN
TELE	TELEPHONE BOX
TV	TV BOX
FP	FLAG POLE
L.A.	LANDSCAPE AREA
---	PROPERTY LINE
OHL	O.H. POWER LINES
TEL	U/G TELEPHONE LINES
WATER	U/G WATER LINE
GAS	U/G GAS LINE
---	FENCE
---	EXISTING CONTOURS
---	PROPOSED CONTOURS
---	EXISTING SPOT GRADES
---	PROPOSED SPOT GRADES
---	PROPOSED EROSION CONTROL
---	PROPOSED DRAINAGE DIVIDES

PROVIDE CONDUIT AND POWER TO SITE LIGHTING AS REQUIRED. COORDINATE WITH MEP/ARCH AND LOCAL FRANCHISE UTILITY COMPANY AS REQUIRED.

NOTE: ALL WATER LINES SHALL BE CLASS 200.

PROVIDE CONDUIT AND POWER TO SIGN AS REQUIRED. COORDINATE WITH MEP/ARCH AND LOCAL FRANCHISE UTILITY COMPANY AS REQUIRED.

NOTE: ALL WATER LINES SHALL BE CLASS 200.

PROPOSED TELEPHONE SERVICE LINE. COORDINATE WITH LOCAL FRANCHISE UTILITY COMPANY FOR SERVICE AS REQUIRED.

NOTE: FOR WATER & SANITARY SEWER DETAILS, USE CITY OF ROCKWALL DETAILS.

PROPOSED GAS SERVICE LINE. COORDINATE WITH LOCAL FRANCHISE UTILITY COMPANY FOR SERVICE AS REQUIRED.

PROVIDE CONDUIT AS REQUIRED FOR PHONE, ELECTRICAL, GAS, IRRIGATION & LIGHTING. COORDINATE WITH LANDSCAPE, MEP & FRANCHISE UTILITY COMPANIES FOR LOCATIONS NUMBER & SIZES OF CONDUITS AND SERVICES.

THE SERVICE WOULD REQUIRE THAT THE DEVELOPER PROVIDE THE STANDARD 2"-4" PVC CONDUITS WITH PULL STRINGS FROM THE TELEPHONE EQUIPMENT TO THE RIGHT-OF-WAY OR UTILITY EASEMENT UNDER AREAS OF THE PAVEMENT. PVC CONDUITS NEED TO BE EXPOSED OR TURNED UP AT THE RIGHT-OF-WAY OR UTILITY EASEMENT. ALL 90° BENDS IN THE CONDUITS SHOULD BE LONG RADIUS. A BACKBOARD IN THE BUILDING SHALL CONSIST OF STANDARD 4"x8"x3/4" SHEET OF PLYWOOD MOUNTED AT THE TERMINATION POINT. ALSO, AN ELECTRICAL OUTLET AND #6 SOLID INSULATED GROUND WIRE FROM THE GROUND BAR OF THE POWER PANEL TO PLYWOOD BACKBOARD WITH A 6' COIL OF WIRE LEFT AT THE BACKBOARD WILL BE REQUIRED AT THE BUILDING.

INSTALL BACK FLOW PREVENTION DEVICE BEYOND DOMESTIC & IRRIGATION METERS IN ACCORDANCE WITH CITY REQUIREMENTS.

**FRANCHISE UTILITY NOTES:**  
 1. TXU ELECTRIC - (972) 771-3979 - JOE PECINA  
 2. ATMOS ENERGY (GAS) - (972) 485-6277 - MS. DINAH WOOD  
 3. SDC - (903) 457-2092 - CAROLYN NAYLOR  
 4. CHARTER COMM. (CABLE) - (817) 509-6272 x8896 - HECTOR ELIZONDO

**BENCH MARK LIST:**  
 BENCHMARK: SQUARE CUT ON THE TOP OF THE WEST END OF A CONCRETE HEADWALL AT THE INTERSECTION OF THE WEST RIGHT-OF-WAY LINE OF STATE HIGHWAY NO. 205 AND THE SOUTH RIGHT-OF-WAY LINE OF CARUTH LANE. ELEVATION = 461.95  
 REFERENCE NAVD 88

**RECORD DRAWINGS:**  
 IT WAS THE INTENT THAT THE IMPROVEMENTS SHOWN BE CONSTRUCTED ACCORDING TO THESE PLANS AS APPROVED BY THE CITY. THE LINES AND GRADES WERE SET ON THE GROUND FOR CONSTRUCTION ACCORDING TO SAID PLANS. THE CITY INSPECTED THE CONSTRUCTION. THE ENGINEER DID NOT VERIFY THE LINES OR GRADES AFTER CONSTRUCTION. WE ARE NOT AWARE OF ANY CHANGES OR REVISIONS TO THESE PLANS DURING CONSTRUCTION OTHER THAN THOSE SHOWN.  
 RANDALL P. POGUE, P.E. DATE: OCTOBER 16, 2006  
 TX LIC. NO. 84780

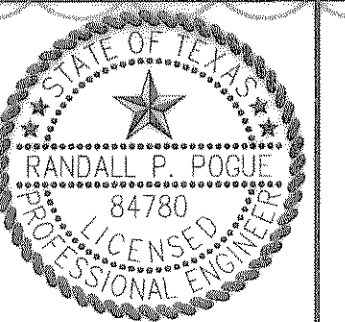
**CAUTION!**  
 UNDERGROUND UTILITIES ARE LOCATED IN THIS AREA. 48 HOURS PRIOR TO ANY CONSTRUCTION ACTIVITIES, CONTACT LINE LOCATES FOR FRANCHISE UTILITY INFO. CALL BEFORE YOU DIG!  
 TEXAS EXCAVATION SAFETY SYSTEM (TESS)  
 1-800-344-8377  
 TEXAS ONE CALL SYSTEMS  
 1-800-248-4545  
 LONG STAR NOTIFICATION CENTER  
 1-800-669-8344 EXT. 5  
 BEFORE YOU DIG...

NO.	DATE	REVISION / DESCRIPTION	SCALE	NOTES
10-16-06		RECORD DRAWINGS		
05-26-06		REVISED TO COMPLY WITH ADA COMMENTS		
05-19-06		MODIFIED TO 8"x8" CUT IN TEE		
04-17-06		ADDED FIRE HYDRANT TO NORTH LANDSCAPE ISLAND		

**OWNER**  
 AMERICAN NATIONAL BANK OF TEXAS  
 P.O. BOX 40  
 TERRELL, TEXAS 75160  
 MR. MIKE CRONIN  
 (214) 863-6532 PHONE  
 (214) 863-5704 FAX

**PROJECT INFORMATION**  
 AMERICAN NATIONAL BANK OF TEXAS  
 1.07± ACRE TRACT  
 BLOCK A, LOT 2, BURKS ADDITION  
 CITY OF ROCKWALL, ROCKWALL COUNTY, TEXAS  
 J.H.B. JONES SURVEY, ABSTRACT NO. 124  
 PROPOSED: BANK

THE SEAL APPEARING ON THIS DOCUMENT WAS AUTHORIZED BY RANDALL P. POGUE, P.E. 84780 ON 04-17-06. ALTERATION OF A SEALED DOCUMENT WITHOUT PROPER NOTIFICATION TO THE RESPONSIBLE ENGINEER IS AN OFFENSE UNDER THE TEXAS ENGINEERING PRACTICE ACT.  
 RANDALL P. POGUE, P.E.  
 TX LIC. NO. 84780



**POGUE**  
 ENGINEERING & DEVELOPMENT COMPANY, INC.  
 1515 HERITAGE DRIVE SUITE 105 MCKINNEY, TEXAS 75069  
 (214) 544-8880 PHONE (214) 544-8882 FAX  
 pogue@pogueengineering.com

**WATER & SANITARY SEWER PLAN**  
 AMERICAN NATIONAL BANK OF TEXAS  
 BLOCK A, LOT 2, BURKS ADDITION  
 J.H.B. JONES SURVEY, ABSTRACT NO. 124  
 CITY OF ROCKWALL, TEXAS

SHEET NO. C6.01