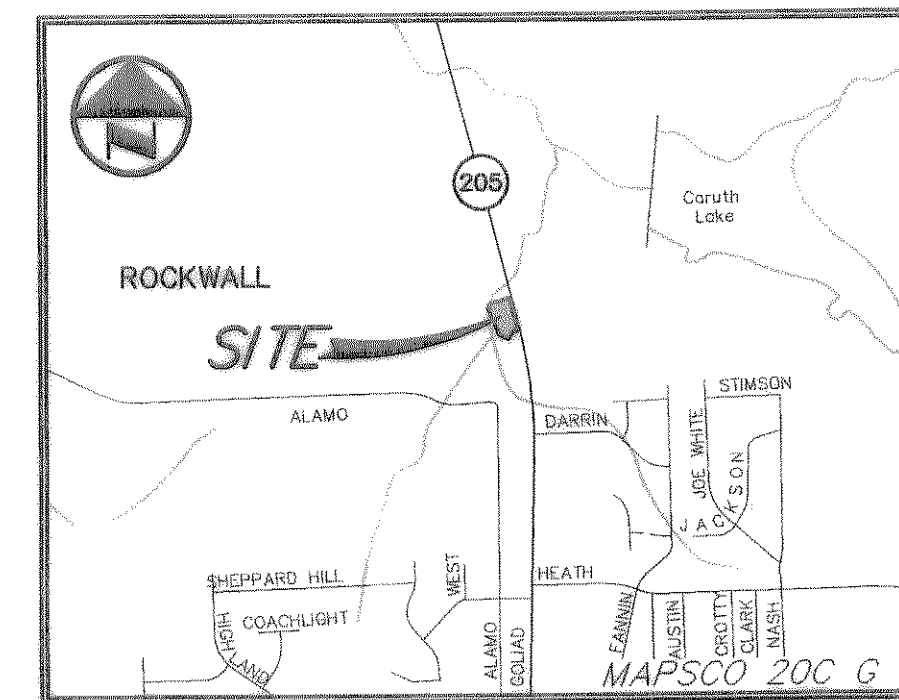
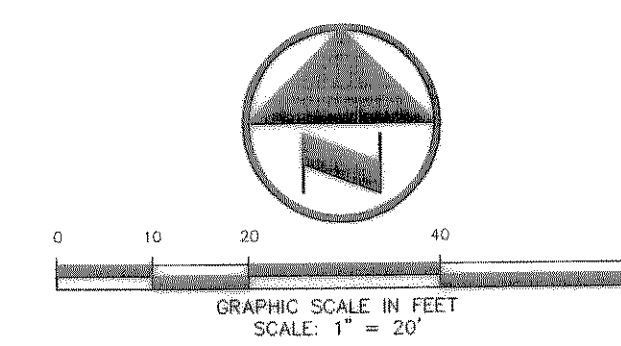


WILLIAMS 10/13/2006 - 10:14AM S:\JOBS\1200-1299\1299-06-05-DWG\1299-07A.DWG © POGUE ENGINEERING & DEVELOPMENT COMPANY, INC. 2006. ALL RIGHTS RESERVED. THE ENGINEERING DESIGN, DETAIL AND ENGINEERING DRAWINGS FOR THIS PROJECT AND/OR OVERALL PROJECT ARE THE LEGAL PROPERTY OF POGUE ENGINEERING & DEVELOPMENT COMPANY, INC. THEIR USE FOR REPRODUCTION, CONSTRUCTION, OR DISTRIBUTION IS PROHIBITED UNLESS AUTHORIZED IN WRITING BY POGUE ENGINEERING & DEVELOPMENT COMPANY, INC.



VICINITY MAP NOT TO SCALE



LEGEND

BOLLARD	○
ELECTRIC METER	⊙
POWER POLE	⊕
WATER METER	⊖
WATER VALVE	⊗
IRRIGATION CONTROL VALVE	⊘
FIRE HYDRANT	⊙
FIRE DEPARTMENT CONNECTION	⊕
CLEAN OUT	⊖
MANHOLE	⊗
GAS METER	⊘
TRAFFIC SIGNAL CONTROL	⊙
TRAFFIC SIGNAL POLE	⊕
TRAFFIC SIGN	⊖
TELEPHONE BOX	⊗
TV BOX	⊘
FLAG POLE	⊙
LANDSCAPE AREA	L.A.
PROPERTY LINE	---
O.H. POWER LINES	---
U/G TELEPHONE LINES	---
U/G WATER LINE	---
U/G GAS LINE	---
FENCE	---
EXISTING CONTOURS	---
PROPOSED CONTOURS	---
EXISTING SPOT GRADES	---
PROPOSED SPOT GRADES	---
PROPOSED EROSION CONTROL	---
PROPOSED DRAINAGE DIVIDES	---

PAVEMENT LEGEND

STANDARD PAVEMENT	□
FIRE LANE PAVEMENT	▨

PARKING TABULATION:

PARKING RATIOS:	COMMERCIAL: 1 SPACE / 300 SF
PROPOSED BUILDING:	COMMERCIAL: 2,594 SF
REQUIRED PARKING:	2,594 SF / 300 SF = 9
TOTAL REQUIRED PARKING = 9	
PARKING PROVIDED:	24 REGULAR PARKING SPACES
	1 HANDICAPPED PARKING SPACES
	25 TOTAL PARKING SPACES PROVIDED

NOTE: ALL DIMENSIONS ARE FROM BACK OF CURB TO BACK OF CURB, UNLESS OTHERWISE NOTED.

ADA ROUTE
NOTE: MAXIMUM SLOPE FOR ALL ADA PATHS 5%; MAX. CROSS FALL IS 2% FOR THE FIRST FIVE FEET FROM THE DOOR. A 2% SLOPE (MAX.) MUST BE MAINTAINED.

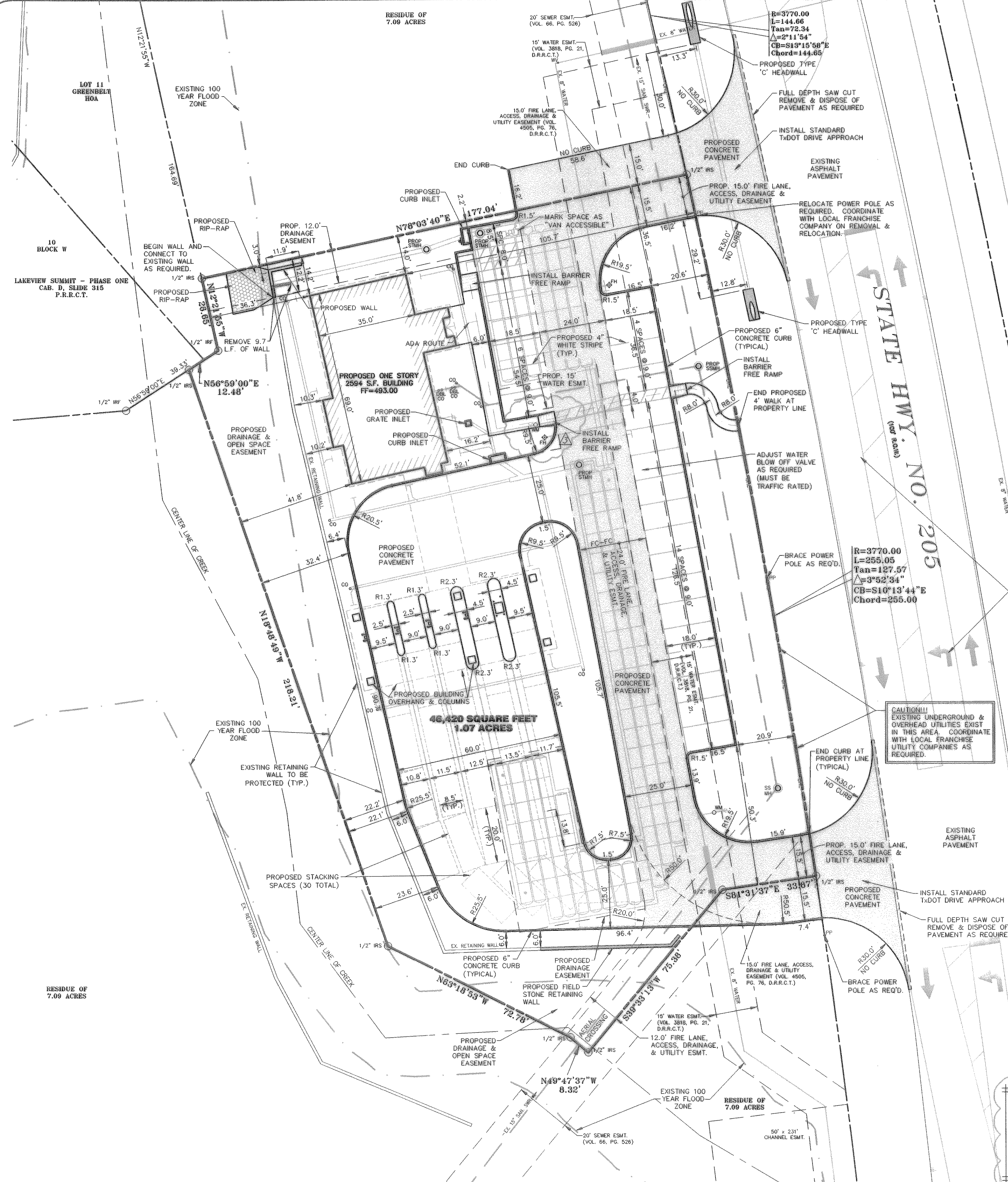
FRANCHISE UTILITY NOTES:
1. TXU ELECTRIC - (972) 771-3878 - JOE PEGINA
2. ATMOS ENERGY (GAS) - (972) 485-8277 - MS. DIWAH WOOD
3. SSC - (903) 437-2092 - CAROLYN NAYLOR
4. CHARTER COMM. (CABLE) - (817) 509-6272 x8896 - HECTOR ELIZONDO

BENCH MARK LIST:
BENCHMARK: SQUARE CUT ON THE TOP OF THE WEST END OF A CONCRETE HEADWALL AT THE INTERSECTION OF THE WEST RIGHT-OF-WAY LINE OF STATE HIGHWAY NO. 205 AND THE SOUTH RIGHT-OF-WAY LINE OF CARUTH LANE. ELEVATION = 481.95
REFERENCE NAVD 88

CAUTION!!!
UNDERGROUND UTILITIES ARE LOCATED IN THIS AREA. 48 HOURS PRIOR TO ANY CONSTRUCTION ACTIVITIES, CONTACT LINE LOCATES FOR FRANCHISE UTILITY INFO. CALL BEFORE YOU DIG.
TEXAS EXCAVATION SAFETY SYSTEM (TESS)
1-800-344-8377
TEXAS ONE CALL SYSTEMS
1-800-245-4848
LOHME STAR NOTIFICATION CENTER
1-800-689-8344 EXT. 5

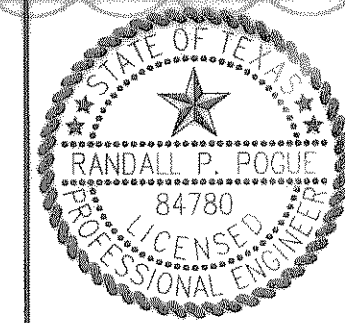
NOTE: SITE PAVING, GRADING, DRAINAGE, AND EROSION CONTROL IMPROVEMENTS TO BE APPROVED BY ADJACENT PROPERTY OWNER VIA A LETTER OF PERMISSION OR EASEMENT.

STATE HWY. NO. 205



RECORD DRAWINGS:
IT WAS THE INTENT THAT THE IMPROVEMENTS SHOWN BE CONSTRUCTED ACCORDING TO THESE PLANS AS APPROVED BY THE CITY. THE LINES AND GRADES WERE SET ON THE GROUND FOR CONSTRUCTION ACCORDING TO SAID PLANS. THE CITY INSPECTED THE CONSTRUCTION. THE ENGINEER DID NOT VERIFY LINES OR GRADES AFTER CONSTRUCTION. WE ARE NOT AWARE OF ANY CHANGES OR REVISIONS TO THESE PLANS DURING CONSTRUCTION OTHER THAN THOSE SHOWN.

RANDALL P. POGUE, P.E. DATE: OCTOBER 16, 2006
TX LIC. NO. 84780



DIMENSIONAL CONTROL PLAN
AMERICAN NATIONAL BANK OF TEXAS
BLOCK A, LOT 2, BURKS ADDITION
J.H.B. JONES SURVEY, ABSTRACT NO. 124
CITY OF ROCKWALL, TEXAS

SHEET NO. C1.01

NO.	DATE	REVISION / DESCRIPTION		
10-16-06	RECORD DRAWINGS			
05-26-06	REVISED TO COMPLY WITH ADA COMMENTS			
05-19-06	MODIFIED TO 8"X8" CUT IN TEE			
04-17-06	ADDED FIRE HYDRANT TO NORTH LANDSCAPE ISLAND			
DESIGN	DRAWN	DATE	SCALE	NOTES
RPP	BEC/WTW	04-17-06	AS SHOWN	-

OWNER
AMERICAN NATIONAL BANK OF TEXAS
P.O. BOX 40
TERRELL, TEXAS 75160
MR. MIKE CRONIN
(214) 863-6532 PHONE
(214) 863-5704 FAX

PROJECT INFORMATION
AMERICAN NATIONAL BANK OF TEXAS
1.07± ACRE TRACT
BLOCK A, LOT 2, BURKS ADDITION
CITY OF ROCKWALL, ROCKWALL COUNTY, TEXAS
J.H.B. JONES SURVEY, ABSTRACT NO. 124
PROPOSED: BANK

THE SEAL APPEARING ON THIS DOCUMENT WAS AUTHORIZED BY RANDALL P. POGUE, P.E. 84780 ON 04-17-06. ALTERATION OF A SEALED DOCUMENT WITHOUT PROPER NOTIFICATION TO THE RESPONSIBLE ENGINEER IS AN OFFENSE UNDER THE TEXAS ENGINEERING PRACTICE ACT.