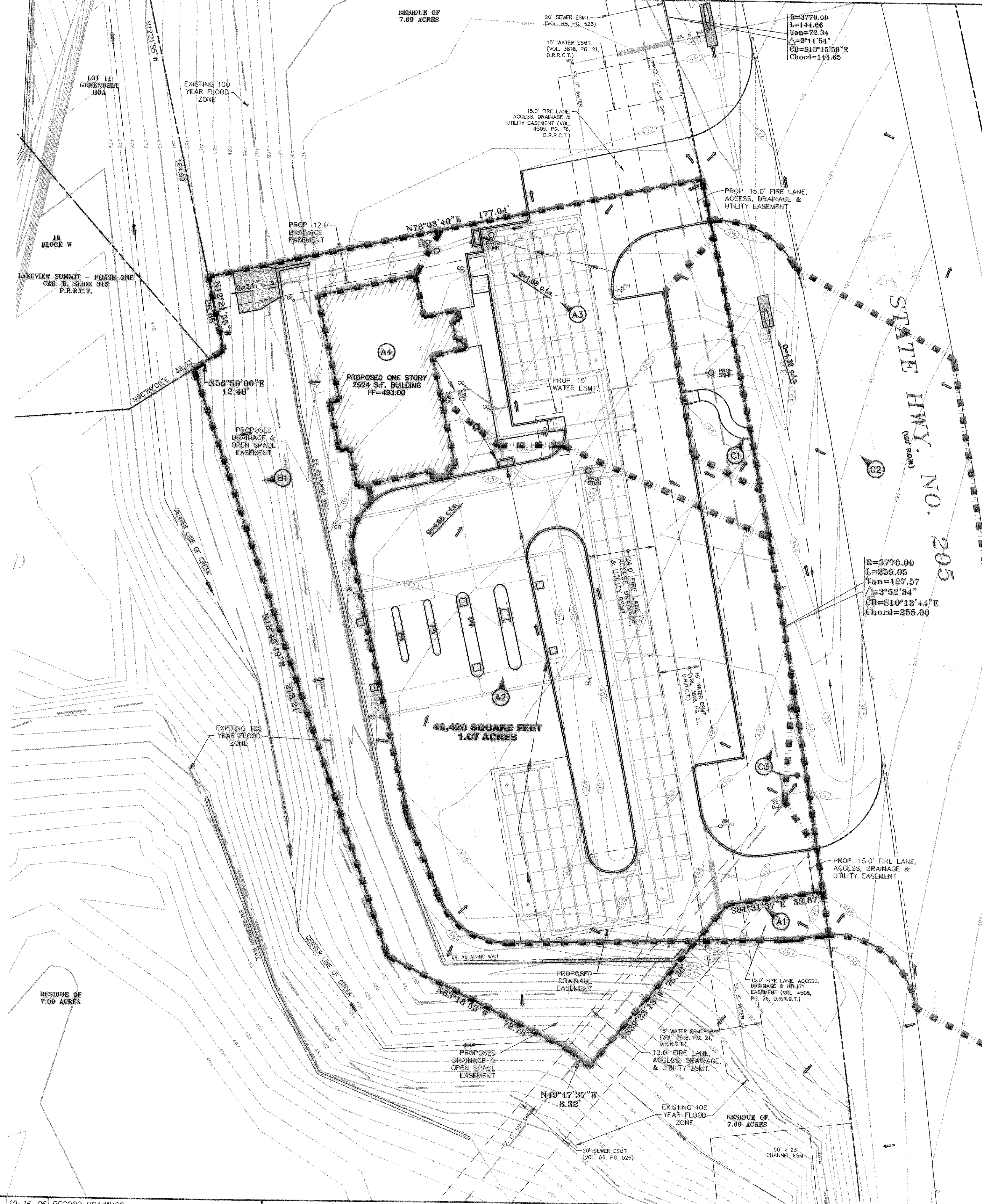


WILLIAMS 10/13/2006 - 10:14AM
 S:\LOBS\2006-2007\206-015\DWG\1269-07A.DWG
 © POGUE ENGINEERING & DEVELOPMENT COMPANY, INC. 2006. ALL RIGHTS RESERVED. THE ENGINEERING DESIGN, DETAIL AND ENGINEERING DRAWINGS FOR THIS PROJECT AND/OR ORIGINAL PRODUCT ARE THE LEGAL PROPERTY OF POGUE ENGINEERING & DEVELOPMENT COMPANY, INC. THEIR USE FOR REPRODUCTION, CONSTRUCTION OR DISTRIBUTION IS PROHIBITED UNLESS AUTHORIZED IN WRITING BY POGUE ENGINEERING & DEVELOPMENT COMPANY, INC.



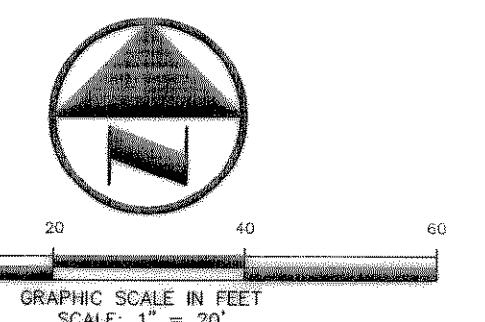
DRAINAGE AREA TABLE/CALCULATIONS							REMARKS
DA #	AREA	C	I ₁₀₀ DEV	Q ₁₀₀ DEV	I ₁₀₀ UNDEV	Q ₁₀₀ UNDEV	
A1	0.01	0.90	9.8	0.09	8.3	0.03	FROM OFF-SITE SOUTH/POND A
A2	0.52	0.90	9.8	4.59	8.3	1.51	TO PROPOSED CURB INLET/POND A
A3	0.19	0.90	9.8	1.68	8.3	0.55	TO PROPOSED CURB INLET/POND A
A4	0.06	0.90	9.8	0.53	8.3	0.17	TO ROOF COLLECTION SYSTEM/POND A
B1	0.25	0.90	9.8	2.21	8.3	0.73	TO EXISTING CREEK
C1	0.04	0.90	9.8	0.35	8.3	0.12	TO PROPOSED HEADWALL
C2	0.44	0.90	9.8	3.88	8.3	1.28	TO PROPOSED HEADWALL
C3	0.01	0.90	9.8	0.09	8.3	0.03	TO PROPOSED HEADWALL

DRAINAGE CRITERIA:
 Q₁₀₀ = CIA
 C = 10 MIN. (DEVELOPED)
 C = 0.90 COMMERCIAL
 C = 20 MIN. (UNDEVELOPED)
 C = 0.35 UNDEVELOPED
 I₁₀₀ = 8.3 (IN/HR) UNDEVELOPED
 I₁₀₀ = 9.8 (IN/HR) DEVELOPED
 A = AREA (ACRES)

DRAINAGE CALCULATIONS:
 D.A. = 1.07 ACRES
 Q UNDEV. = 3.11 CFS
 Q DEV = 9.44 CFS
 BASED ON MODIFIED RATIONAL METHOD
 Q TO BE DETERMINED = 6.33 CFS
 VOLUME REQUIRED = 11,711 CF

POND 'A' VOLUME CALCULATIONS:
 VOLUME PROVIDED = 11,759 POND A CF **
 ** WSEL = 489.25
 Qa = 0.46 CFS

DRAINAGE DISCHARGE:
 TOTAL D.A. = 1.07 ACRES
 TOTAL Q UNDEV. ALLOWABLE = 3.11 CFS
 TOTAL D.A. (BYPASS) = 0.30 ACRES
 TOTAL Q DEV (BYPASS) = 2.65 CFS
 TOTAL Q ALLOWED TO RELEASE AT DETENTION=Qd
 Qd = TOTAL Q UNDEV. ALLOWABLE - TOTAL Q (BYPASS)
 Qd = 3.11 - 2.65 = 0.46 CFS



LEGEND

UL	BOLLARD
EM	ELECTRIC METER
PP	POWER POLE
LS	LIGHT STANDARD
WM	WATER METER
WV	WATER VALVE
ICV	IRRIGATION CONTROL VALVE
FD	FIRE HYDRANT
FDCC	FIRE DEPARTMENT CONNECTION
CO	CLEAN OUT
MH	MANHOLE
GM	GAS METER
TSP	TRAFFIC SIGNAL CONTROL
TSP	TRAFFIC SIGNAL POLE
TSN	TRAFFIC SIGN
TELE	TELEPHONE BOX
TV	TV BOX
FP	FLAG POLE
L.A.	LANDSCAPE AREA
---	PROPERTY LINE
---	O.H. POWER LINES
---	U/G TELEPHONE LINES
---	WATER
---	U/G WATER LINE
---	GAS
---	U/G GAS LINE
---	FENCE
---	EXISTING CONTOURS
---	PROPOSED CONTOURS
---	EXISTING SPOT GRADES
---	PROPOSED SPOT GRADES
---	PROPOSED EROSION CONTROL
---	PROPOSED DRAINAGE DIVIDES

RECORD DRAWINGS:
 IT WAS THE INTENT THAT THE IMPROVEMENTS SHOWN BE CONSTRUCTED ACCORDING TO THESE PLANS AS APPROVED BY THE CITY. THE LINES AND GRADES WERE SET ON THE GROUND FOR CONSTRUCTION ACCORDING TO SAID PLANS. THE CITY INSPECTED THE CONSTRUCTION. THE ENGINEER DID NOT VERIFY LINES OR GRADES AFTER CONSTRUCTION. WE ARE NOT AWARE OF ANY CHANGES OR REVISIONS TO THESE PLANS DURING CONSTRUCTION OTHER THAN THOSE SHOWN.

RANDALL P. POGUE, P.E.
 TX LIC. NO. 84780

DATE: OCTOBER 16, 2006

CAUTION!!!
 UNDERGROUND UTILITIES ARE LOCATED IN THIS AREA. 48 HOURS PRIOR TO ANY CONSTRUCTION ACTIVITIES, CONTACT LINE LOCATOR FOR FRANCHISE UTILITY INFO. CALL BEFORE YOU DIG!
 TEXAS EXCAVATION SAFETY SYSTEM (TESS)
 1-800-344-8377
 TEXAS ONE CALL SYSTEMS
 1-800-245-4545
 LONE STAR NOTIFICATION CENTER
 1-800-669-8344 EXT. 5

BEFORE YOU DIG...

FRANCHISE UTILITY NOTES:
 1. TXU ELECTRIC - (972) 771-3979 - JOE PECINA
 2. ATMOS ENERGY (GAS) - (972) 485-6277 - MS. DINAH WOOD
 3. SBC - (903) 457-2992 - CAROLYN MAYLOR
 4. CHARTER COMM. (CABLE) - (917) 509-6272 x8896 - HECTOR ELIZONDO

BENCH MARK LIST:
 BENCHMARK: SQUARE CUT ON THE TOP OF THE WEST END OF A CONCRETE HEADWALL AT THE INTERSECTION OF THE WEST RIGHT-OF-WAY LINE OF STATE HIGHWAY NO. 205 AND THE SOUTH RIGHT-OF-WAY LINE OF CARUTH LANE. ELEVATION = 481.95
 REFERENCE NAVD 88

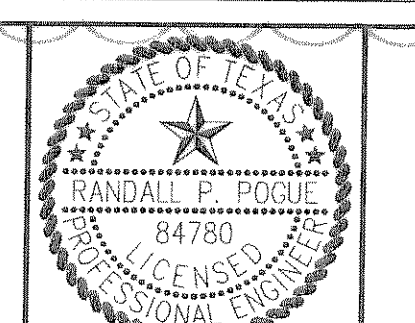
NO.	DATE	REVISION / DESCRIPTION
1	10-16-06	RECORD DRAWINGS
2	05-26-06	REVISED TO COMPLY WITH ADA COMMENTS
3	05-19-06	MODIFIED TO 8"x8" CUT IN TEE
4	04-17-06	ADDED FIRE HYDRANT TO NORTH LANDSCAPE ISLAND

OWNER
 AMERICAN NATIONAL BANK OF TEXAS
 P.O. BOX 40
 TERRELL, TEXAS 75160
 MR. MIKE CRONIN
 (214) 863-6532 PHONE
 (214) 863-5704 FAX

PROJECT INFORMATION
 AMERICAN NATIONAL BANK OF TEXAS
 1.07± ACRE TRACT
 BLOCK A, LOT 2, BURKS ADDITION
 CITY OF ROCKWALL, ROCKWALL COUNTY, TEXAS
 J.H.B. JONES SURVEY, ABSTRACT NO. 124
 PROPOSED: BANK

THE SEAL APPEARING ON THIS DOCUMENT WAS AUTHORIZED BY RANDALL P. POGUE, P.E. 84780 ON 04-17-06. ALTERATION OF A SEALED DOCUMENT WITHOUT PROPER NOTIFICATION TO THE RESPONSIBLE ENGINEER IS AN OFFENSE UNDER THE TEXAS ENGINEERING PRACTICE ACT.

RANDALL P. POGUE
 OCT 17 2006



POGUE
 ENGINEERING & DEVELOPMENT COMPANY, INC.

1515 HERITAGE DRIVE
 SUITE 105
 MCKINNEY, TEXAS 75069

(214) 544-8860 PHONE
 (214) 544-8862 FAX
 rppogue@pogueengineering.com

DRAINAGE AREA MAP
 AMERICAN NATIONAL BANK OF TEXAS
 BLOCK A, LOT 2, BURKS ADDITION
 J.H.B. JONES SURVEY, ABSTRACT NO. 124
 CITY OF ROCKWALL, TEXAS

SHEET NO.
C2.01