

CIVIL SITE DEVELOPMENT PLANS

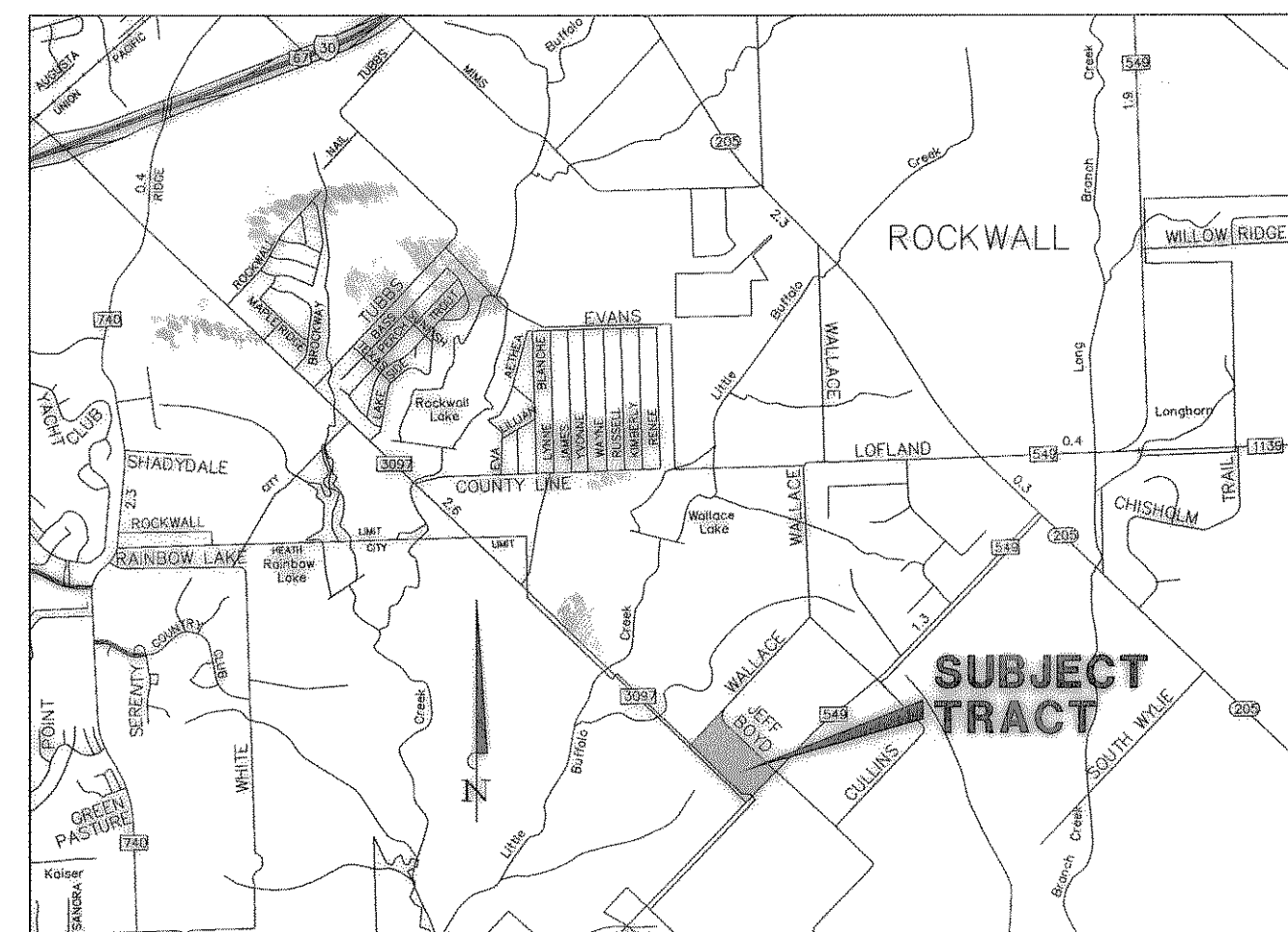
FOR

ALLIANCE BANK

Alliance Bank - FM 549 at Jeff Boyd

LOT 1, BLOCK A, W.W. FORD SURVEY ABSTRACT NO. 80
CITY OF ROCKWALL, ROCKWALL COUNTY, TEXAS

SEPTEMBER, 2005



VICINITY MAP
N.T.S.

INDEX OF SHEETS

SHEET NO.	DESCRIPTION	REV.
C-1	COVER SHEET	
C-2	GENERAL NOTES	
C-3	FINAL PLAT - 1	
C-4	FINAL PLAT - 2	
C-5	SITE PLAN	
C-6	DIMENSION CONTROL PLAN	
C-7	GRADING PLAN	
C-8	OFF-SITE GRADING AND DETENTION POND PLAN	
C-9	EXISTING CONDITION DRAINAGE AREA MAP	
C-10	PROPOSED CONDITION DRAINAGE AREA MAP	
C-11	DRAINAGE AREA MAP	
C-12	EROSION CONTROL PLAN (S.W.P.P.)	
C-13-A	EROSION CONTROL / SITE MAP (S.W.P.P.)	
C-13-B	EROSION CONTROL DETAILS (S.W.P.P.)	
C-14	STORM SEWER PLAN	
C-15	STORM SEWER PROFILES	
C-16	WATER AND SANITARY SEWER PLAN	
C-17	SANITARY SEWER PROFILES	
C-18	PAVING PLAN - 1	
C-19	PAVING PLAN - 2 (FM 549)	
C-20	PAVING PLAN - 3 (JEFF BOYD ROAD)	
C-21	CITY OF ROCKWALL STANDARD DETAILS - PAVING - 1	
C-22	CITY OF ROCKWALL STANDARD DETAILS - PAVING - 2	
C-23	CITY OF ROCKWALL STANDARD DETAILS - PAVING - 3	
C-24	CITY OF ROCKWALL STANDARD DETAILS - UTILITIES - 1	
C-25	CITY OF ROCKWALL STANDARD DETAILS - UTILITIES - 2	
C-26	CITY OF ROCKWALL STANDARD DETAILS - UTILITIES - 3	
C-27	CITY OF ROCKWALL STANDARD DETAILS - UTILITIES - 4	
C-28	TRAFFIC CONTROL PLAN	
C-29	MISC. CONSTRUCTION DETAILS	

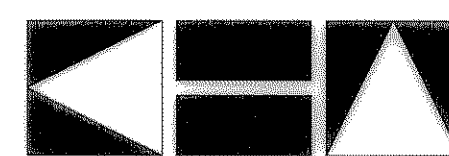
DEVELOPER:

ALLIANCE BANK

300 Rosemont Street
 Sulpher Springs, Texas 75482

Contact : G.V. Hughes Ph. (903) 439-6800

PREPARED BY:



**Kimley-Horn
 and Associates, Inc.**

12700 Park Central Drive, Suite 1800
 Dallas, Texas 75251
 Tel. No. (972) 770-1300
 Fax No. (972) 239-3820

Contact : Nicholas Sulkowski, P.E. Ph. (972) 770-1300

LOCATED AT THE NORTHWEST CORNER OF
FM 549 AND FM 3097
IN
THE CITY OF ROCKWALL,
ROCKWALL COUNTY, TEXAS



RECORD DRAWING
 THIS RECORD DRAWING HEREIN REFLECTS
 TO THE BEST OF THE DESIGN ENGINEER'S
 KNOWLEDGE, THE APPROXIMATE LOCATION
 OF THE CONSTRUCTED WORK, USING
 INFORMATION AS PROVIDED BY THE
 CONTRACTORS.