

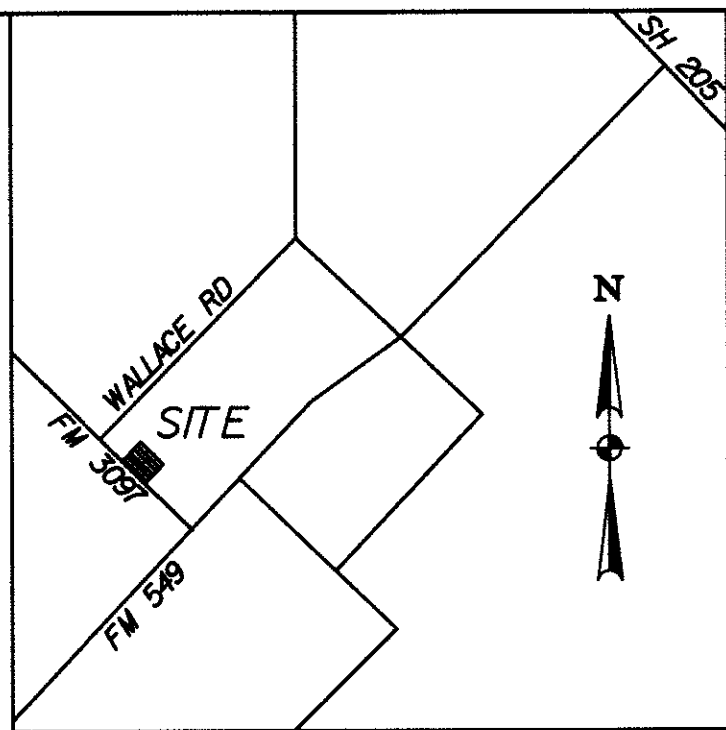
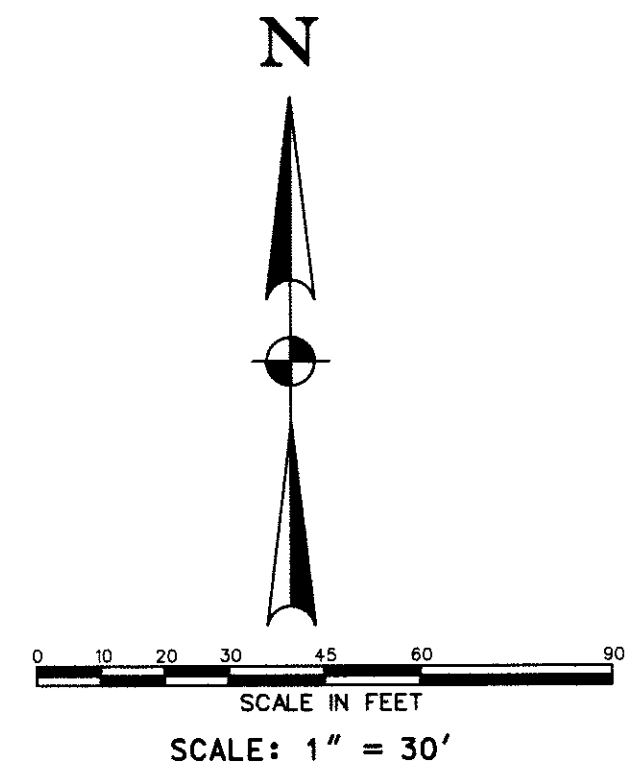
15' WIDE X 50' LONG (MINIMUM DIMENSIONS)
12" THICK (MIN 4" 6" ROCK) TEMPORARY STONE
CONSTRUCTION ENTRANCE/EXIT
PHASES 1, 2, 3 & 4

SILT FENCE
ALL PHASES

INLET PROTECTION
ALL PHASES

LINE LEGEND:

- PROPERTY LINE
- DRAINAGE FLOW
- PROPOSED WATER LINE
- ROAD CENTER LINE
- ROAD CENTER LINE
- PROPOSED STORM SEWER
- PROPOSED STREET
- EXISTING CONTOUR LINE
- EXISTING CONTOUR LINE
- BUILDING SETBACK LINE
- DRAINAGE EASEMENT
- DRAINAGE DIVIDE LINE
- ROW / LOT LINE
- PROPOSED FENCE



Stabilized Construction Entrance

DESCRIPTION:

- The general layout must include the following minimum criteria:
 - Surface Strength: ASTM D1557 Type Method for Index Proctor Maximum of 95% Maximum.
 - Dimensions and Material Properties: 12" thick, 15' long, 15' wide.
 - Material Properties: 100% sand, 0% fines, 100% passing 4.75 mm sieve.
 - Approved Grading: ASTM D1557 Type Method for Maximum Allowable Grading.
 - Approved Grading: ASTM D1557 Type Method for Maximum Allowable Grading.
- When necessary, vehicles must be covered to remove sediment from entrance and travel lanes, driveway or parking lot. Other vehicles must be covered to remove sediment from entrance and travel lanes, driveway or parking lot. Other vehicles must be covered to remove sediment from entrance and travel lanes, driveway or parking lot.
- Minimum dimensions for this entrance shall be as follows:

Travel Area	Width	Min. Width	Min. Depth
1.1 Acres	100 feet	15 feet	24 inches
1.2 Acres	200 feet	24 feet	30 inches
1.3 Acres	300 feet	33 feet	36 inches

LIMITATIONS:

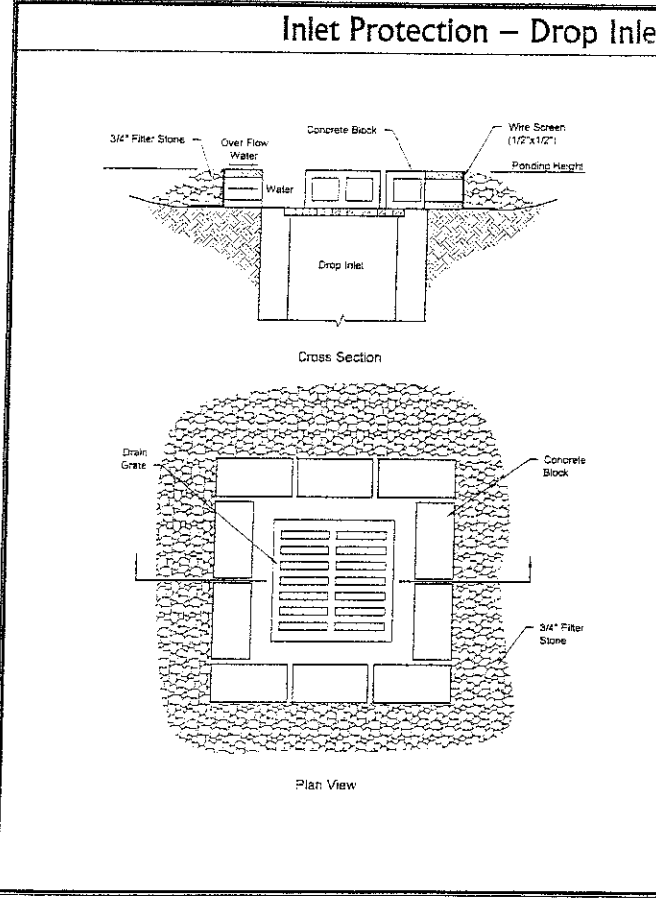
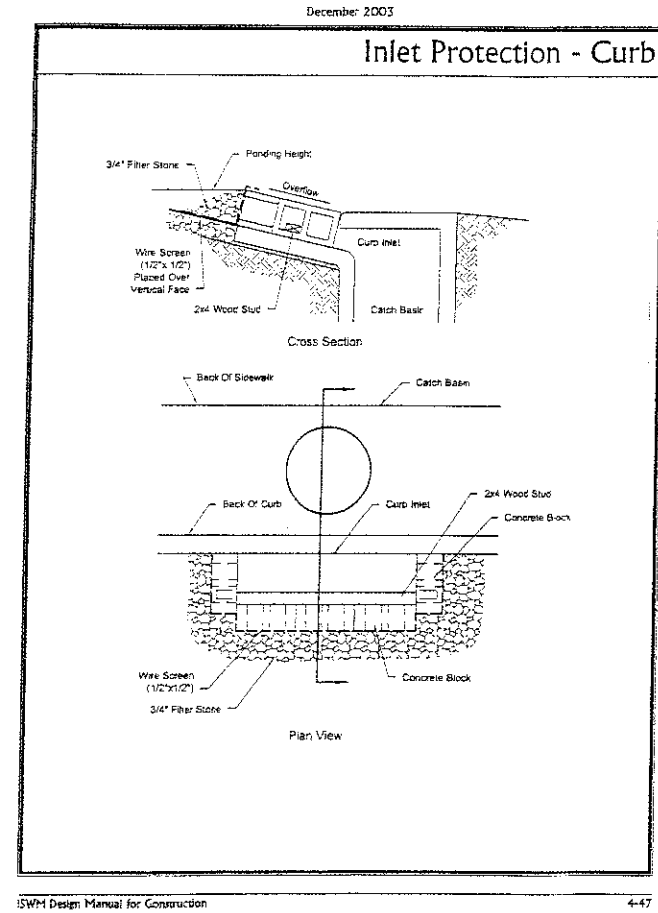
Stabilized entrances are not to be used in conjunction with a stormwater management system. Stabilized entrances are not to be used in conjunction with a stormwater management system.

MAINTENANCE REQUIREMENTS:

Construction entrances shall be inspected regularly, at least as often as required by the TDES Construction General Permit. Inspections shall be conducted by the contractor. Inspections shall be conducted by the contractor. Inspections shall be conducted by the contractor.

APPLICATION:

Stabilized entrances are used primarily for sites in which sediment control is required. Stabilized entrances are used primarily for sites in which sediment control is required.



Silt Fence

DESCRIPTION:

Silt fences are temporary structures that are installed at low points along the site to filter sediment from runoff. Silt fences are temporary structures that are installed at low points along the site to filter sediment from runoff.

APPLICATIONS:

- Construction sites
- Residential sites
- Commercial sites
- Industrial sites

MAINTENANCE REQUIREMENTS:

Silt fences shall be inspected regularly, at least as often as required by the TDES Construction General Permit. Inspections shall be conducted by the contractor. Inspections shall be conducted by the contractor. Inspections shall be conducted by the contractor.

APPLICATION:

Silt fences are used primarily for sites in which sediment control is required. Silt fences are used primarily for sites in which sediment control is required.

Silt Fence

DESCRIPTION:

Silt fences are temporary structures that are installed at low points along the site to filter sediment from runoff. Silt fences are temporary structures that are installed at low points along the site to filter sediment from runoff.

APPLICATIONS:

- Construction sites
- Residential sites
- Commercial sites
- Industrial sites

MAINTENANCE REQUIREMENTS:

Silt fences shall be inspected regularly, at least as often as required by the TDES Construction General Permit. Inspections shall be conducted by the contractor. Inspections shall be conducted by the contractor. Inspections shall be conducted by the contractor.

APPLICATION:

Silt fences are used primarily for sites in which sediment control is required. Silt fences are used primarily for sites in which sediment control is required.

Stabilized Construction Entrance

DESCRIPTION:

Stabilized construction entrances are used primarily for sites in which sediment control is required. Stabilized construction entrances are used primarily for sites in which sediment control is required.

APPLICATIONS:

- Construction sites
- Residential sites
- Commercial sites
- Industrial sites

MAINTENANCE REQUIREMENTS:

Stabilized construction entrances shall be inspected regularly, at least as often as required by the TDES Construction General Permit. Inspections shall be conducted by the contractor. Inspections shall be conducted by the contractor. Inspections shall be conducted by the contractor.

APPLICATION:

Stabilized construction entrances are used primarily for sites in which sediment control is required. Stabilized construction entrances are used primarily for sites in which sediment control is required.

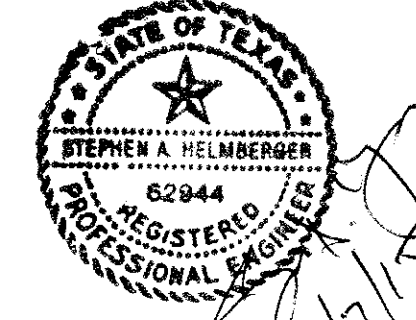
- GENERAL NOTES:**
- EROSION CONTROL DEVICES AS SHOWN ON THE EROSION CONTROL PLAN FOR THE PROJECT SHALL BE INSTALLED PRIOR TO THE START OF LAND DISTURBING ACTIVITIES ON THE PROJECT.
 - ALL EROSION CONTROL DEVICES ARE TO BE INSTALLED IN ACCORDANCE WITH THE APPROVED PLANS AND SPECIFICATIONS FOR THE PROJECT. CHANGES ARE TO BE APPROVED BEFORE CONSTRUCTION BY THE DESIGN ENGINEER AND THE CITY.
 - IF THE EROSION CONTROL PLAN AS APPROVED CANNOT CONTROL EROSION AND OFF-SITE SEDIMENTATION FROM THE PROJECT THE EROSION CONTROL PLAN WILL BE REQUIRED TO BE REVISED AND/OR ADDITIONAL EROSION CONTROL DEVICES WILL BE REQUIRED ON SITE.
 - IF OFF-SITE SOIL BORROW OR SPOIL SITES ARE USED IN CONJUNCTION WITH THIS PROJECT, THIS INFORMATION SHALL BE DISCLOSED AND SHOWN ON THE EROSION CONTROL PLAN. OFF-SITE BORROW AND SPOIL AREAS ARE CONSIDERED A PART OF THE PROJECT SITE AND THEREFORE SHALL COMPLY WITH THE CITY EROSION CONTROL REQUIREMENTS. THESE AREAS SHALL BE STABILIZED WITH PERMANENT GROUND COVER PRIOR TO FINAL APPROVAL OF THE PROJECT.
 - TOTAL PROJECT AREA = 0.57 ACRES
DISTURBED AREA = 0.57 ACRES
 - SEE CITY EROSION AND SEDIMENT CONTROL MANUAL FOR LATEST BMP DEVICE STANDARDS AND SPECIFICATIONS.
 - 75% TO 80% OF ALL DISTURBED AREAS TO HAVE A MINIMUM OF 1" STAND OF GRASS PRIOR TO ENGINEERING ACCEPTANCE.

LEGEND:

- SILT FENCE (NO WOODEN STAKES)
- TEMPORARY STONE CONSTRUCTION ENTRANCE/EXIT MIN 12" THICK WITH 4" 6" STONE (NO CRUSHED CONCRETE)
- INLET PROTECTION

BMP MAINTENANCE SCHEDULE

BMP	MAINTENANCE FREQUENCY	BY:
SILT FENCE/STONE OVERFLOW	WEEKLY/AFTER RAINS	CONTRACTOR
CONST ENTRANCE	WEEKLY/AFTER RAINS	CONTRACTOR
INLET PROTECTION	WEEKLY/AFTER RAINS	CONTRACTOR



OWNER:
RANDALL NOE ENTERPRISES INC.
P.O. BOX 369
ROCKWALL, TEXAS 75087
MR. ROB WHITTLE
(972) 771-5253

ENGINEER:
HELMBERGER ASSOCIATES, INC.
1525 BOZMAN ROAD
WYLIE, TEXAS 75098
MR. STEPHEN A. HELMBERGER, P.E.
(972) 442-7459

THIS DOCUMENT IS SUBMITTED AS AN "AS-BUILT DRAWING" FOR RECORD PURPOSES ONLY. ANY MODIFICATION OR CHANGES THAT HAVE BEEN MADE DURING CONSTRUCTION AND NOTED ON THIS DRAWING HAVE BEEN SUPPLIED BY THE OWNER. HIS REPRESENTATIVE OR THE CONTRACTOR. FIELD INSPECTION/CONTRACT SUPERVISION OF THE CONSTRUCTION WAS PERFORMED BY OTHERS. IT IS NOT GUARANTEED BY HELMBERGER ASSOCIATES, INC. THAT THIS DOCUMENT REPRESENTS "AS-BUILT" CONDITIONS. TPBE FIRM NO. 000756

AS-BUILT DRAWING 2-15-16

REV.	BY:	REVISION

EROSION CONTROL CONSTRUCTION PHASING:

PHASE	DESCRIPTION
PHASE 1	TOP SOIL REMOVAL AND ROUGH GRADING
PHASE 2	UTILITY INSTALLATION
PHASE 3	BUILDING CONSTRUCTION
PHASE 4	PAVING
PHASE 5	LANDSCAPE AND IRRIGATION

TYPE:	INSTALLATION:	REMOVAL:
CONSTRUCTION ENTRANCE	PRIOR TO STARTING	PRIOR TO PAVEMENT PLACEMENT
SILT FENCE/STONE OVERFLOW STRUCTURE	PRIOR TO STARTING	AFTER ESTABLISHING GRASS COVER
INLET PROTECTION	PRIOR TO STARTING	AFTER ESTABLISHING GRASS COVER

EROSION CONTROL CONSTRUCTION PLAN

DESIGN	DRAWN	DATE	SCALE	NOTES	FILE	NO.
HELM.	CADD	MAY 2015	1"=30'	ERA	1507	C5

EROSION CONTROL PLAN
LOT 11 BLOCK 2 - ALLIANCE ADDITION PH 2
RANDALL NOE ENTERPRISES INC.
CITY OF ROCKWALL, TEXAS

HELMBERGER ASSOCIATES, INC.
CIVIL AND ENVIRONMENTAL ENGINEERS
1525 BOZMAN ROAD, WYLIE, TEXAS 75098 (972) 442-7459