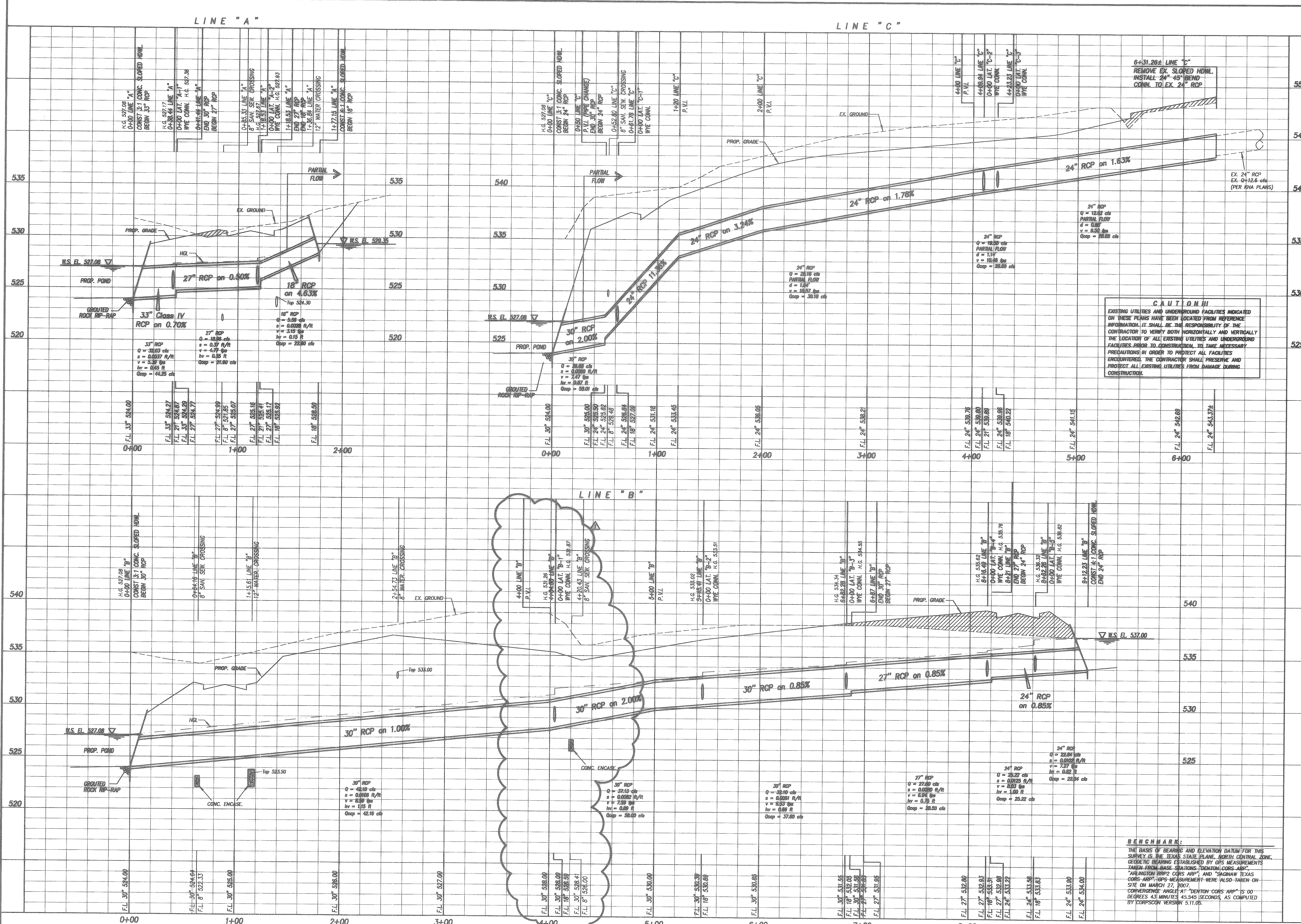


Revision	Date	Description
1	6/26/08	Storm Sewer Plan

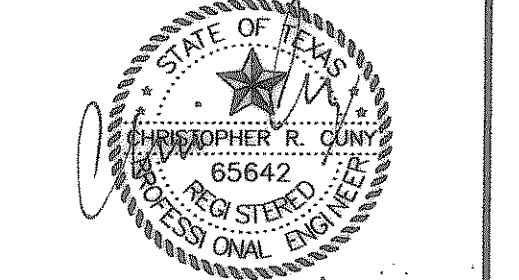


Owner:
Whittle Development Co.
 PO Box 369 • Rockwall, Texas • 75087
 Phone: 972-771-5253

ALLIANCE
ADDITION

F.C. CUNY CORPORATION
 #2 Horizon Court • Ste. 500 • Heath, Texas 75032
 Phone: 469-402-7700
 Fax: 469-402-0700

THE SEAL APPEARING ON THIS DOCUMENT WAS AUTHORIZED BY CHRISTOPHER R. CUNY, P.E. 65642



1-15-2009
 Drawn By: F.C. CUNY
 Checked By: F.C. CUNY
 Date: 1-08
 Project No: 07-003
 Sheet Title: Storm Sewer Profiles Lines A, B & C

Scale: 1" = 40'
 Sheet No: 11 of 15

CONSTRUCTION RECORD DRAWINGS
 JANUARY 2009

CAUTION
 EXISTING UTILITIES AND UNDERGROUND FACILITIES INDICATED ON THESE PLANS HAVE BEEN LOCATED FROM REFERENCE INFORMATION. IT SHALL BE THE RESPONSIBILITY OF THE CONTRACTOR TO VERIFY BOTH HORIZONTALLY AND VERTICALLY THE LOCATION OF ALL EXISTING UTILITIES AND UNDERGROUND FACILITIES PRIOR TO CONSTRUCTION. TO TAKE NECESSARY PRECAUTIONS IN ORDER TO PROTECT ALL FACILITIES ENCOUNTERED. THE CONTRACTOR SHALL PRESERVE AND PROTECT ALL EXISTING UTILITIES FROM DAMAGE DURING CONSTRUCTION.

BENCHMARK:
 THE BASIS OF BEARING AND ELEVATION DATUM FOR THIS SURVEY IS THE TEXAS STATE PLANE, NORTH CENTRAL ZONE, GEODETIC BEARING ESTABLISHED BY GPS MEASUREMENTS TAKEN FROM BASE STATIONS "DENTON CORP ARP", "ARLINGTON BRP2 CORP ARP", AND "SOKRAW TEXAS CORP ARP". GPS MEASUREMENTS WERE ALSO TAKEN ON-SITE ON MARCH 27, 2007. CONVERGENCE ANGLE AT "DENTON CORP ARP" IS 00 DEGREES 43 MINUTES 45.545 SECONDS, AS COMPUTED BY CORPSSON VERSION 5.11.05.

Z:\Projects\5-Residential\Whittle-Horizon\cvc design\hor-stormswwr.dwg Mon Jan 12 11:21:40 2009