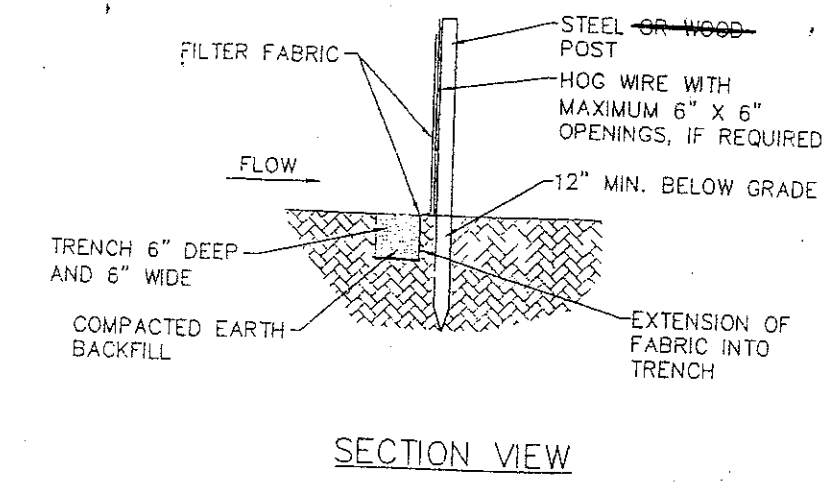
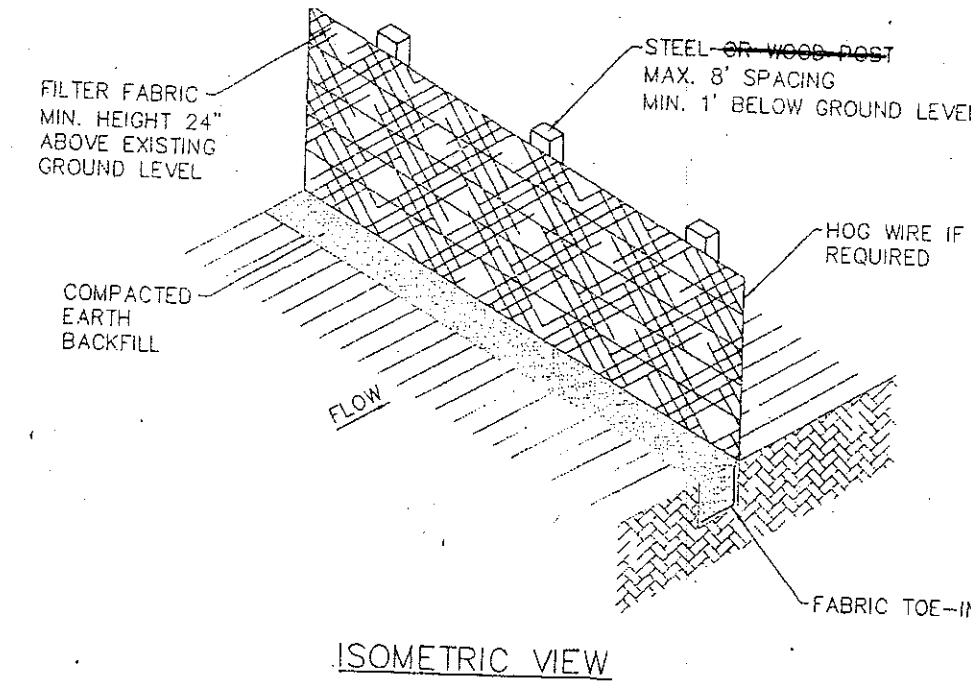
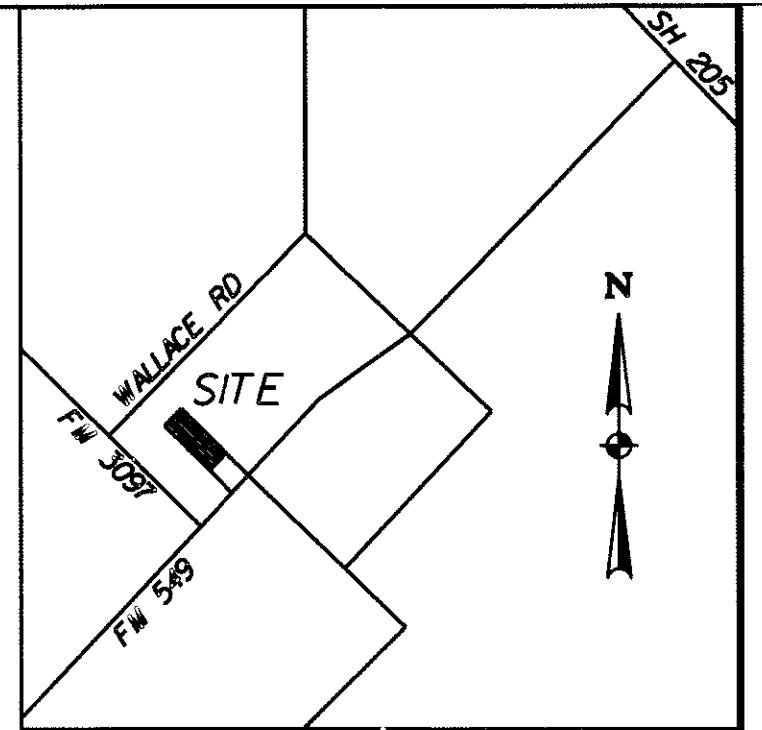


LINE LEGEND:

- PROPERTY LINE
- DRAINAGE FLOW
- PROPOSED WATER LINE
- ROAD CENTER LINE
- PROPOSED STORM SEWER
- PROPOSED STREET
- 610- EXISTING CONTOUR LINE
- PROPOSED CONTOUR LINE
- BUILDING SETBACK LINE
- DRAINAGE EASEMENT
- DRAINAGE DIVIDE LINE
- ROW / LDT LINE
- PROPOSED FENCE



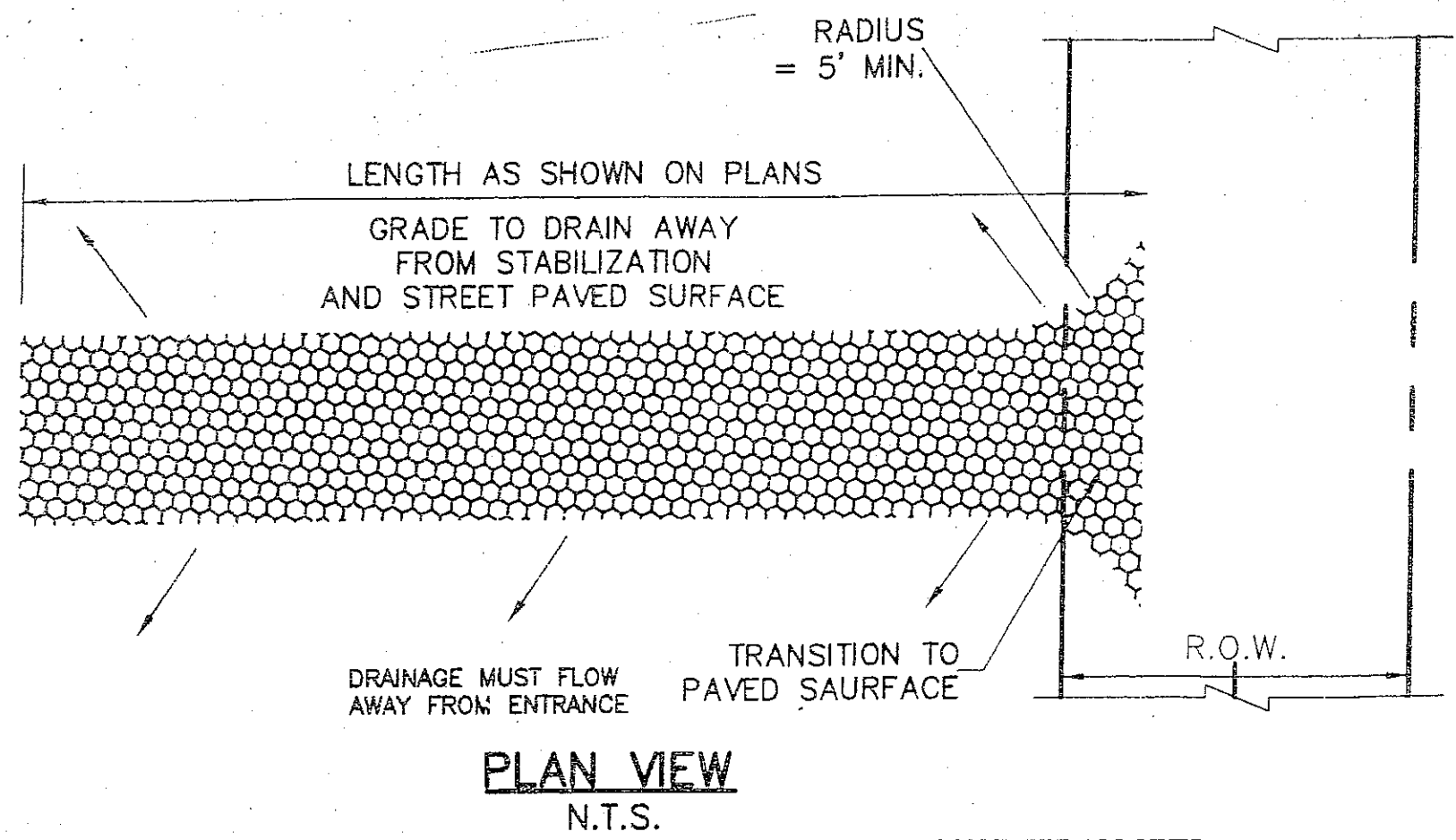
- GENERAL NOTES:**
- EROSION CONTROL DEVICES AS SHOWN ON THE EROSION CONTROL PLAN FOR THE PROJECT SHALL BE INSTALLED PRIOR TO THE START OF LAND DISTURBING ACTIVITIES ON THE PROJECT.
 - ALL EROSION CONTROL DEVICES ARE TO BE INSTALLED IN ACCORDANCE WITH THE APPROVED PLANS AND SPECIFICATIONS FOR THE PROJECT. CHANGES ARE TO BE APPROVED BEFORE CONSTRUCTION BY THE DESIGN ENGINEER AND THE CITY.
 - IF THE EROSION CONTROL PLAN AS APPROVED CANNOT CONTROL EROSION AND OFF-SITE SEDIMENTATION FROM THE PROJECT THE EROSION CONTROL PLAN WILL BE REVISED AND/OR ADDITIONAL EROSION CONTROL DEVICES WILL BE REQUIRED ON SITE.
 - IF OFF-SITE SOIL BORROW OR SPOIL SITES ARE USED IN CONJUNCTION WITH THIS PROJECT, THIS INFORMATION SHALL BE DISCLOSED AND SHOWN ON THE EROSION CONTROL PLAN. OFF-SITE BORROW AND SPOIL AREAS ARE CONSIDERED A PART OF THE PROJECT SITE AND THEREFORE SHALL COMPLY WITH THE CITY EROSION CONTROL REQUIREMENTS. THESE AREAS SHALL BE STABILIZED WITH PERMANENT GROUND COVER PRIOR TO FINAL APPROVAL OF THE PROJECT.
 - TOTAL PROJECT AREA = 0.99 ACRES
DISTURBED AREA = 0.99 ACRES
 - SEE CITY EROSION AND SEDIMENT CONTROL MANUAL FOR LATEST BMP DEVICE STANDARDS AND SPECIFICATIONS.

LEGEND:

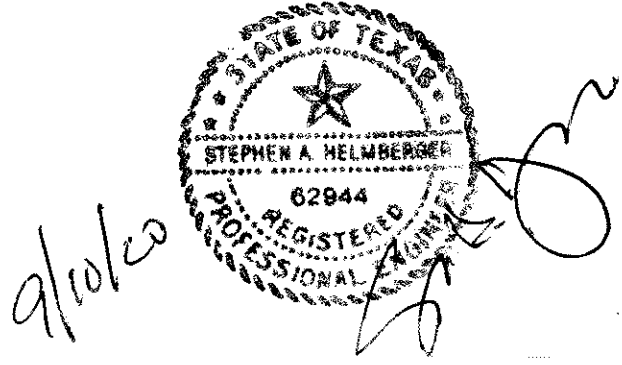
- SILT FENCE (NO WOODEN STAKES)
- TEMPORARY STONE CONSTRUCTION ENTRANCE/EXIT MIN 12" THICK WITH 4" STONE (NO CRUSHED CONCRETE PER CITY)
- INLET PROTECTION

BMP MAINTENANCE SCHEDULE

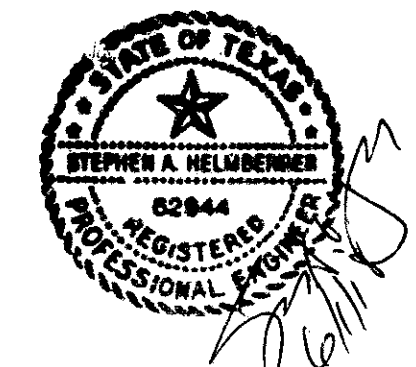
BMP	MAINTENANCE FREQUENCY	BY:
SILT FENCE/STONE OVERFLOW	WEEKLY/AFTER RAINS	CONTRACTOR
CONST ENTRANCE	WEEKLY/AFTER RAINS	CONTRACTOR
INLET PROTECTION	WEEKLY/AFTER RAINS	CONTRACTOR



- STABILIZED CONSTRUCTION ENTRANCE GENERAL NOTES:**
- STONE SHALL BE 4 TO 6 INCH DIAMETER CRUSHED ROCK
 - LENGTH SHALL BE 50 FEET, UNLESS SHOWN OTHERWISE ON PLANS.
 - THE THICKNESS SHALL NOT BE LESS THAN 12 INCHES.
 - THE WIDTH SHALL BE NO LESS THAN THE FULL WIDTH OF ALL POINTS OF INGRESS OR EGRESS.
 - WHEN NECESSARY, VEHICLES SHALL BE CLEANED TO REMOVE SEDIMENT PRIOR TO ENTRANCE ONTO A PUBLIC ROADWAY. WHEN WASHING IS REQUIRED, IT SHALL BE DONE ON AN AREA STABILIZED WITH CRUSHED STONE WITH DRAINAGE FLOWING AWAY FROM BOTH THE STREET AND THE STABILIZED ENTRANCE. ALL SEDIMENT SHALL BE PREVENTED FROM ENTERING ANY STORM DRAIN, DITCH OR WATERCOURSE USING APPROVED METHODS.
 - THE ENTRANCE SHALL BE MAINTAINED IN A CONDITION WHICH WILL PREVENT TRACKING OR FLOWING OF SEDIMENT ONTO PAVED SURFACES. THIS MAY REQUIRE PERIODIC TOP DRESSING WITH ADDITIONAL STONE AS CONDITIONS DEMAND. ALL SEDIMENT SPILLED, DROPPED, WASHED, OR TRACKED ONTO PAVED SURFACES MUST BE REMOVED IMMEDIATELY.
 - THE ENTRANCE MUST BE PROPERLY GRADED OR INCORPORATE A DRAINAGE SWALE TO PREVENT RUNOFF FROM LEAVING THE CONSTRUCTION SITE.



THIS DOCUMENT IS SUBMITTED AS AN "AS-BUILT DRAWING" FOR RECORD PURPOSES ONLY. ANY MODIFICATION OR CHANGES THAT HAVE BEEN MADE DURING CONSTRUCTION AND NOTED ON THIS DRAWING HAVE BEEN SUPPLIED BY THE OWNER, HIS REPRESENTATIVE OR THE CONTRACTOR. FIELD INSPECTION/CONTRACT SUPERVISION OF THE CONSTRUCTION WAS PERFORMED BY OTHERS. IT IS NOT GUARANTEED BY HELMBERGER ASSOCIATES, INC. THAT THIS DOCUMENT REPRESENTS "AS-BUILT" CONDITIONS. TBPE FIRM NO. 000756



OWNER:
RANDALL NOE ENTERPRISES INC.
P.O. BOX 369
ROCKWALL, TEXAS 75087
MR. ROB WHITTLE
(972) 771-5253

ENGINEER:
HELMBERGER ASSOCIATES, INC.
1525 BOZMAN ROAD
WYLIE, TEXAS 75098
MR. STEPHEN A. HELMBERGER, P.E.
(972) 442-4459

AS-BUILT DRAWING 09-10-2020

REV.	BY:	REVISION

- EROSION CONTROL CONSTRUCTION PHASING:**
- PHASE 1 - TOP SOIL REMOVAL AND ROUGH GRADING
 - PHASE 2 - UTILITY INSTALLATION
 - PHASE 3 - BUILDING CONSTRUCTION
 - PHASE 4 - PAVING
 - PHASE 5 - LANDSCAPE AND IRRIGATION

EROSION CONTROL CONSTRUCTION PLAN

TYPE:	INSTALLATION:	REMOVAL:
CONSTRUCTION ENTRANCE	PRIOR TO STARTING	PRIOR TO PAVEMENT PLACEMENT
SILT FENCE/STONE OVERFLOW STRUCTURE	PRIOR TO STARTING	AFTER ESTABLISHING GRASS COVER
INLET PROTECTION	PRIOR TO STARTING	AFTER ESTABLISHING GRASS COVER

EROSION CONTROL PLAN

LOTS 14/15 BLOCK 2 - ALLIANCE ADDITION PH 2

RANDALL NOE ENTERPRISES INC.

CITY OF ROCKWALL, TEXAS

HELMBERGER ASSOCIATES, INC.
CIVIL AND ENVIRONMENTAL ENGINEERS
1525 BOZMAN ROAD, WYLIE, TEXAS 75098 (972) 442-7459

DESIGN	DRAWN	DATE	SCALE	NOTES	FILE	NO.
HELM.	CADD	FEB 2016	1"=30'	ERBORDER	1727	C5