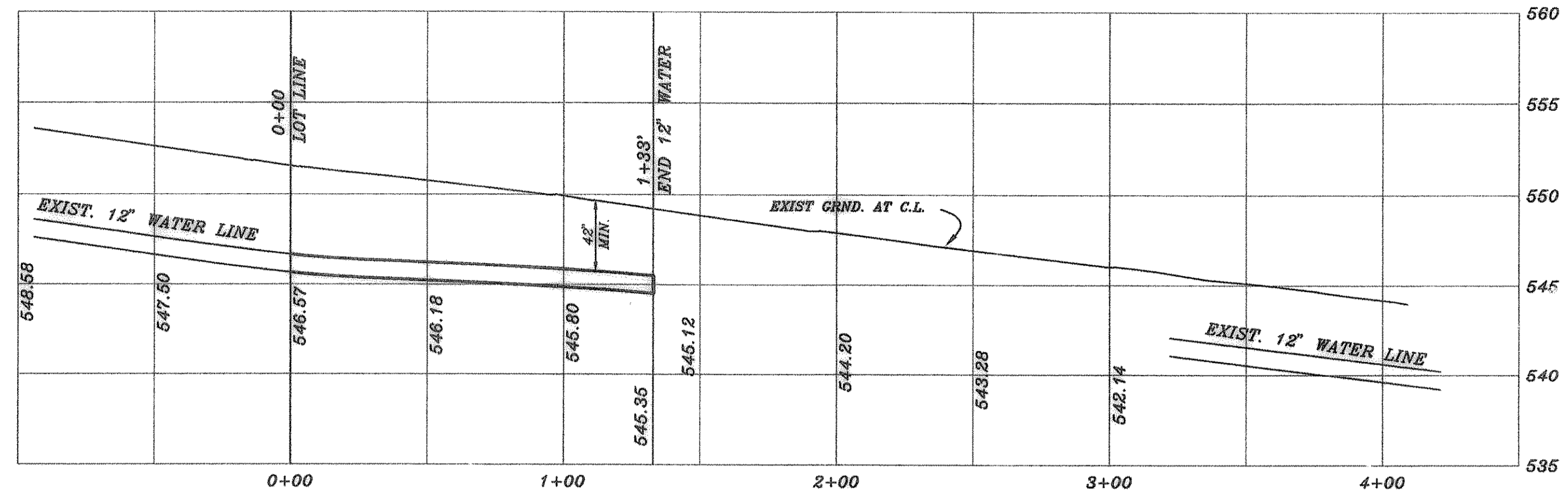
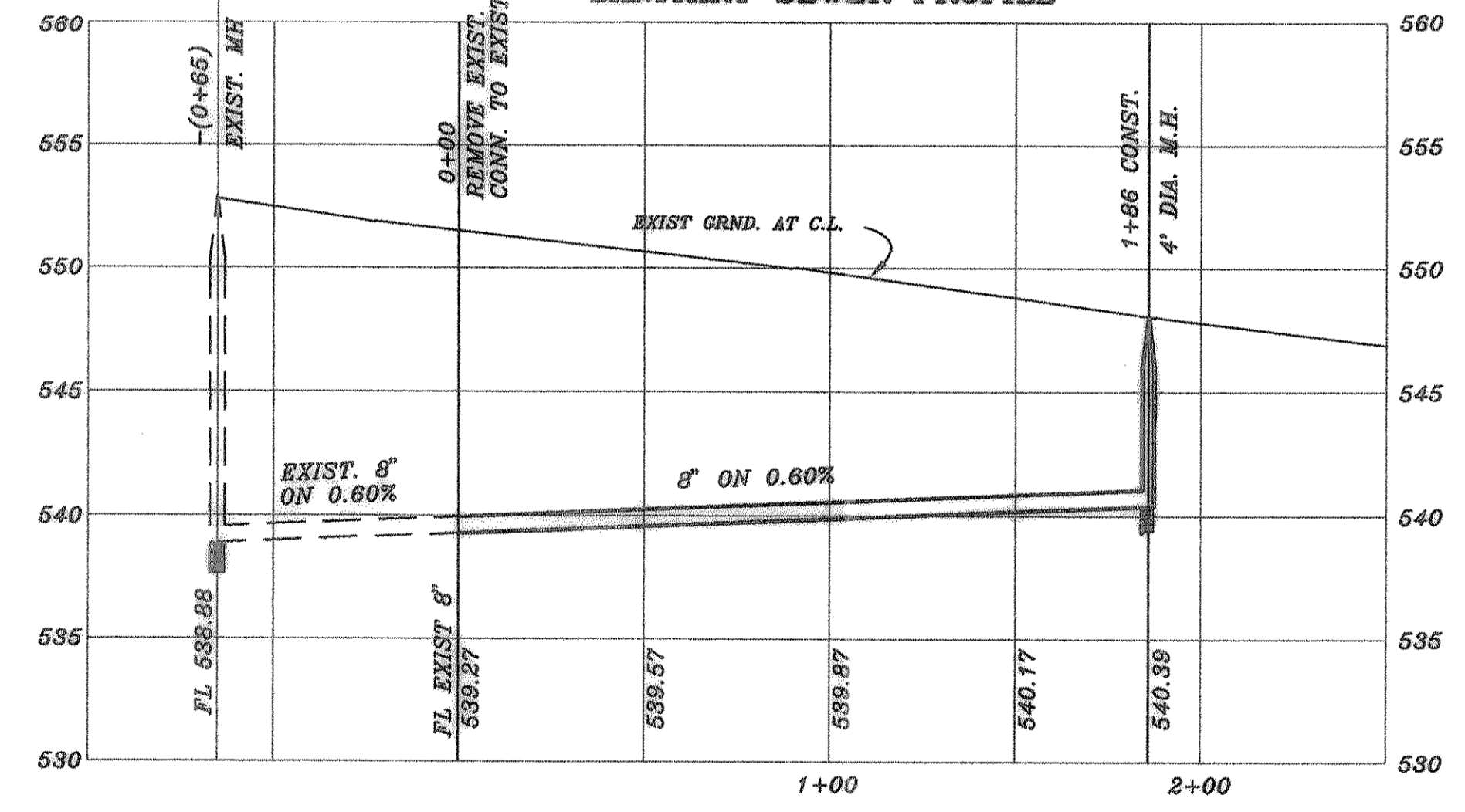


12" WATER LINE PROFILE



SANITARY SEWER PROFILE



B.M.
TOP OPERATING NUT OF F.H.
AT NORTH CORNER OF INTERSECTION
OF ROCKWALL PKWY. & F.M. 3097
ELEVATION = 553.08

AS BUILT



[Signature]
3/2000

| | | | | | | |
|---|--|--|--|---|--|-------------------------|
| <p>HAROLD L. EVANS CONSULTING ENGINEER P.O. BOX 28355 2331 CUS THOMASSON ROAD, SUITE 102 DALLAS, TEXAS 75228, (214) 328-8133</p> | | | | <p>PROPOSED WATER & SEWER LOT 1 ALLEN ANDERSON ADDITION</p> | | <p>SHEET NO. 4</p> |
| <p>DATE: 12-13-99 SCALE: 1" = 40' 1" = 8" DESIGN: H.L.E. DRAWN:</p> | | | | <p>CITY OF ROCKWALL</p> | | <p>JOB NO. 9981</p> |