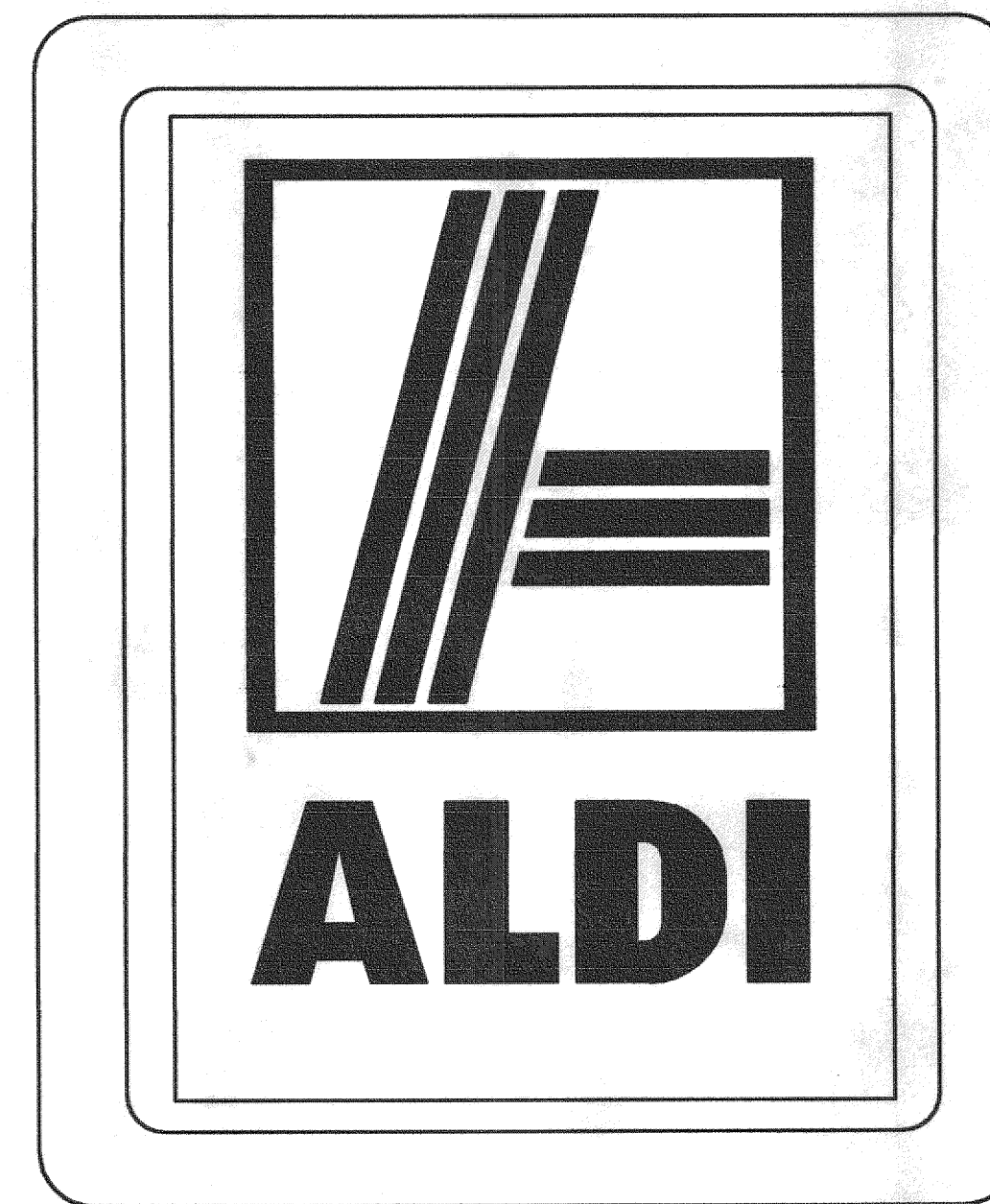


SITE IMPROVEMENTS FOR



LOT 1, BLOCK 1 RIDGE/SUMMER LEE ADDITION S.E.C. RIDGE ROAD (F.M. 740) & SUMMER LEE DRIVE THE CITY OF ROCKWALL, TEXAS

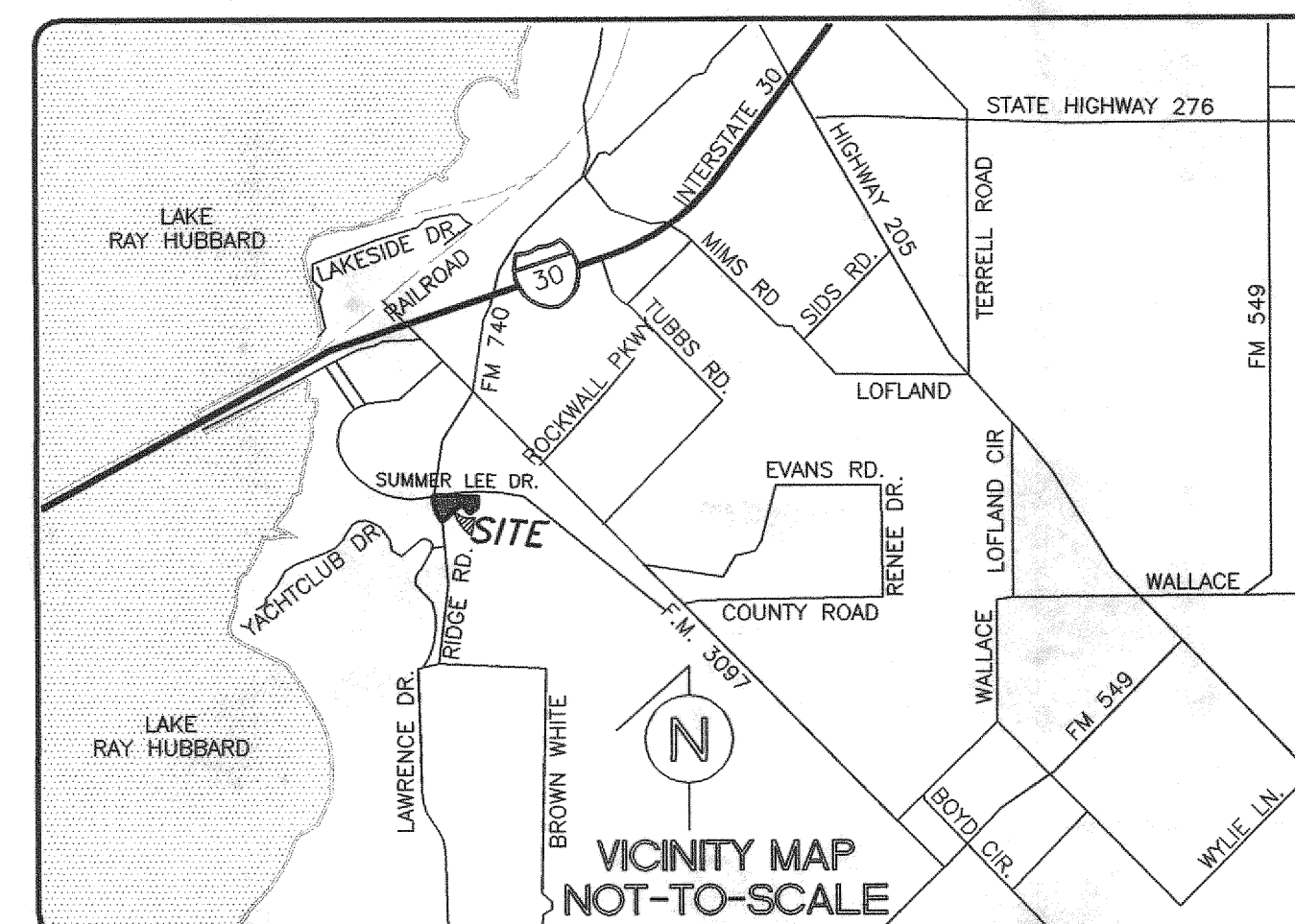
SHEET INDEX

C-1.1 - 1.2	FINAL PLAT
C-2	TOPOGRAPHIC SURVEY
C-3	CITY SITE PLAN
C-4	DIMENSION CONTROL
C-5	PAVING PLAN
C-5.1 - 5.3	ON-SITE PAVING DETAILS
C-6	GRADING PLAN
C-7.1	EXISTING DRAINAGE AREA MAP
C-7.2	DEVELOPED DRAINAGE AREA MAP
C-8.1	DRAINAGE PLAN
C-8.2 - 8.4	DETENTION POND CALCULATIONS
C-9	WATER & SANITARY SEWER PLAN
C-10	PROFILES
C-11	EROSION CONTROL PLAN
C-12.1 - 12.2	EROSION CONTROL DETAILS
C-13	ALDI SPECIFICATIONS
L-1	LANDSCAPE PLAN
L-2	LANDSCAPE SPECIFICATIONS
L-3	IRRIGATION PLAN
L-4	IRRIGATION SPECIFICATIONS
MEP-1	MEP SITE PLAN

APPLICANT:
ALDI, INC.
2500 WESTCOURT ROAD
DENTON, TEXAS 76207
(940) 220-5400
CONTACT: HEATHER RIMMER

OWNER:
PETAR TEMUNOVIC & CVIJETA TEMUNOVIC
201 LAURANCE DRIVE, PMB 410
HEATH, TEXAS 75032

CIVIL ENGINEER:
BURGER ENGINEERING, LLC
TEXAS REGISTERED ENGINEERING FIRM F-12997
17103 PRESTON ROAD, SUITE 180N
DALLAS, TEXAS 75248
(972) 630-3360
FAX: (972) 630-3380
CONTACT: BRYAN M. BURGER, P.E.



AS-BUILT
DATE: 01-09-13

B | BURGER
ENGINEERING
Civil Consultants

17103 Preston Road, Suite 180N
Dallas, Texas 75248
Office: 972.630.3360 Fax: 972.630.3380
TBPE F-12997