

See Sheet 1 for additional easements & callouts

**LOT 1, BLOCK A**  
10.3100 ACRES  
(449,103 SF)

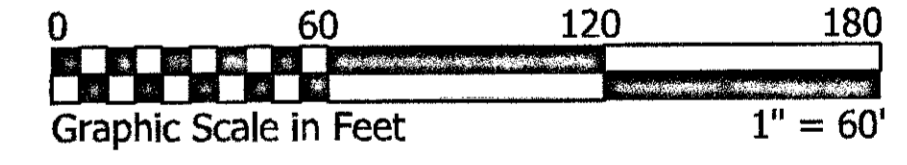
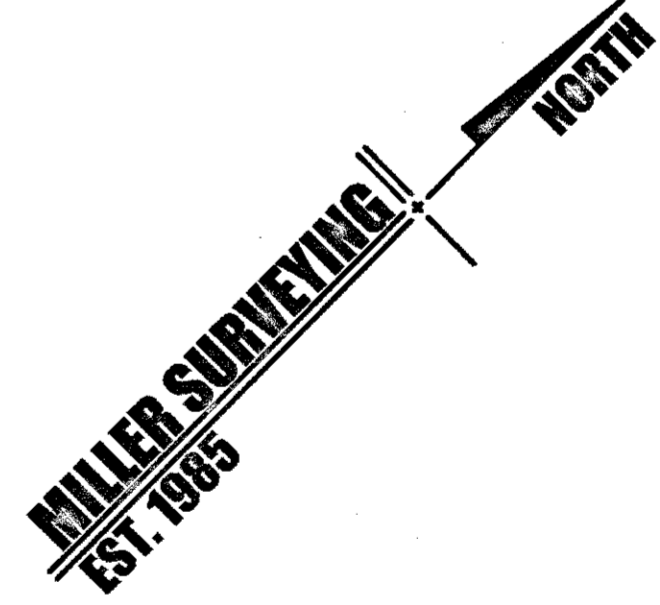
Curve	Arc	Radius	Central Angle	Chord	
EC-1	22.60'	51.00'	25°23'14"	S 33°08'11" E	22.41'
EC-2	43.42'	49.00'	50°46'27"	S 45°49'48" E	42.02'
EC-3	22.60'	51.00'	25°23'14"	S 58°31'25" E	22.41'
EC-4	102.96'	45.00'	131°05'45"	N 85°59'27" W	81.93'
EC-5	64.59'	50.00'	74°00'59"	S 08°49'19" E	60.19'
EC-6	6.81'	80.00'	4°52'49"	N 22°52'59" W	6.81'
EC-7	78.54'	50.00'	89°59'56"	N 89°10'14" E	70.71'
EC-8	140.97'	70.00'	115°23'17"	N 13°31'23" W	118.33'
EC-9	64.08'	80.00'	45°53'38"	N 48°16'13" W	62.38'
EC-10	40.87'	28.00'	83°38'16"	S 86°41'28" W	37.34'
EC-11	4.78'	28.00'	9°47'03"	N 46°35'52" W	4.78'
EC-12	34.42'	28.00'	70°25'54"	N 06°29'24" W	32.29'
EC-13	11.46'	28.00'	23°26'45"	N 40°26'56" E	11.38'
EC-14	9.26'	16.00'	33°08'50"	S 27°29'06" E	9.13'
EC-15	35.09'	24.00'	83°46'10"	S 85°56'36" E	32.05'
EC-16	15.58'	16.00'	55°47'01"	S 16°58'50" W	14.97'
EC-17	70.02'	54.00'	74°17'26"	S 08°41'01" E	65.21'
EC-18	14.81'	54.00'	15°42'34"	S 36°18'58" W	14.76'
EC-19	43.93'	30.00'	83°54'07"	N 86°07'19" E	40.11'
EC-20	19.11'	30.00'	36°30'01"	N 25°55'13" E	18.79'
EC-21	20.29'	30.00'	38°45'24"	S 63°32'57" W	19.91'
EC-22	23.56'	30.00'	45°00'00"	S 21°40'15" W	22.96'
EC-23	42.41'	54.00'	45°00'00"	N 21°40'15" E	41.33'
EC-24	84.82'	54.00'	90°00'00"	N 89°10'16" E	76.37'
EC-25	47.12'	30.00'	90°00'03"	S 89°10'15" W	42.43'
EC-26	23.56'	30.00'	45°00'00"	N 23°19'45" W	22.96'
EC-27	23.56'	30.00'	45°00'00"	N 21°40'15" E	22.96'
EC-28	47.12'	30.00'	90°00'00"	N 89°10'16" E	42.43'
EC-29	47.12'	30.00'	90°00'00"	S 00°49'44" E	42.43'
EC-30	47.12'	30.00'	90°00'00"	N 89°10'16" E	42.43'
EC-31	38.90'	30.00'	74°17'26"	S 08°41'01" E	36.23'
EC-32	8.23'	30.00'	15°42'34"	S 36°18'58" W	8.20'
EC-33	43.93'	30.00'	83°54'08"	N 02°13'11" W	40.11'
EC-34	47.12'	30.00'	90°00'00"	N 89°10'15" E	42.43'
EC-35	47.12'	30.00'	90°00'03"	S 00°49'44" E	42.43'

Line	Bearing	Distance	Line	Bearing	Distance
EL-1	S 44°10'16" W	19.94'	EL-36	N 44°10'15" E	14.72'
EL-2	S 45°49'44" E	58.63'	EL-37	N 45°49'45" W	15.31'
EL-3	N 44°10'16" E	19.94'	EL-38	N 44°10'15" E	25.00'
EL-4	S 45°49'44" E	20.00'	EL-39	S 45°49'45" E	26.81'
EL-5	N 44°10'16" E	128.66'	EL-40	N 44°10'15" E	14.42'
EL-6	N 89°10'15" E	35.58'	EL-41	N 89°10'15" E	77.90'
EL-7	S 00°49'45" E	20.00'	EL-42	N 45°19'35" E	6.02'
EL-8	N 89°10'15" W	27.29'	EL-43	S 45°30'06" E	20.00'
EL-9	S 44°10'16" W	120.37'	EL-44	S 45°19'35" W	14.36'
EL-10	S 44°10'16" W	39.94'	EL-45	S 89°10'15" W	77.66'
EL-11	N 45°49'44" W	78.63'	EL-46	S 44°10'15" W	230.45'
EL-12	S 44°10'16" W	29.06'	EL-47	S 00°49'45" E	55.79'
EL-13	S 44°10'16" W	17.90'	EL-48	S 44°10'16" W	374.14'
EL-14	S 45°49'44" E	12.76'	EL-49	S 89°10'16" W	41.98'
EL-15	S 44°10'16" W	20.00'	EL-50	N 45°49'44" W	341.91'
EL-16	N 45°49'44" W	12.76'	EL-51	N 08°41'01" W	34.07'
EL-17	S 44°10'16" W	277.43'	EL-52	N 28°27'41" E	98.48'
EL-18	S 28°27'41" W	83.33'	EL-53	N 44°10'16" E	337.15'
EL-19	N 81°18'59" E	7.92'	EL-54	N 45°49'44" W	49.86'
EL-20	S 08°41'01" E	20.00'	EL-55	N 44°10'16" E	10.00'
EL-21	S 81°18'59" W	11.34'	EL-56	N 45°49'44" W	21.45'
EL-22	S 08°41'01" E	5.15'	EL-57	N 46°06'22" E	20.01'
EL-23	S 45°49'44" E	326.90'	EL-58	S 45°49'44" W	8.00'
EL-24	N 89°10'16" E	19.89'	EL-59	N 46°06'22" E	272.50'
EL-25	N 45°49'44" W	9.35'	EL-60	S 43°44'24" E	20.00'
EL-26	N 44°10'16" E	20.00'	EL-61	S 46°06'22" W	271.77'
EL-27	S 45°49'44" E	13.26'	EL-62	S 45°49'44" E	42.62'
EL-28	N 44°10'16" E	341.48'	EL-63	N 44°10'16" E	19.94'
EL-29	N 00°49'45" W	15.62'	EL-64	S 43°14'26" E	171.70'
EL-30	S 89°10'15" W	11.50'	EL-65	S 45°00'00" W	15.02'
EL-31	N 00°49'45" W	20.00'	EL-66	N 44°10'16" W	15.02'
EL-32	N 89°10'15" E	11.50'	EL-67	N 44°10'16" E	24.34'
EL-33	N 00°49'45" W	20.18'	EL-68	S 45°49'44" E	24.00'
EL-34	N 44°10'15" E	192.87'	EL-69	S 45°49'44" E	30.00'
EL-35	N 45°49'45" W	11.50'	EL-70	N 44°10'16" E	41.67'

Line	Bearing	Distance	Line	Bearing	Distance
EL-71	N 89°10'16" E	12.93'	EL-106	S 45°49'44" E	305.09'
EL-72	S 45°49'44" E	147.12'	EL-107	S 44°10'16" W	275.70'
EL-73	S 45°49'44" E	10.00'	EL-108	N 45°49'44" W	310.57'
EL-74	N 44°10'16" E	29.96'	EL-109	N 00°49'45" W	21.00'
EL-75	N 89°10'16" E	29.50'	EL-110	N 44°10'16" E	333.12'
EL-76	S 45°49'44" E	155.88'	EL-111	S 45°49'44" E	120.65'
EL-77	S 45°49'48" E	10.21'	EL-112	S 44°10'16" W	108.00'
EL-78	S 20°26'34" E	28.85'	EL-113	S 45°49'44" E	24.00'
EL-79	S 71°13'02" E	28.85'	EL-114	N 44°10'16" E	108.00'
EL-80	S 45°49'48" E	20.00'	EL-115	S 45°49'44" E	100.44'
EL-81	N 20°26'34" W	46.22'	EL-116	S 28°27'41" W	75.07'
EL-82	S 28°11'11" W	46.21'	EL-117	N 44°10'15" E	159.12'
EL-83	S 45°49'48" E	49.22'	EL-118	S 45°49'44" E	285.96'
EL-84	N 20°26'34" W	15.19'	EL-119	S 44°10'16" W	20.50'
EL-85	S 45°49'48" E	6.33'			
EL-86	N 44°10'16" E	16.57'			
EL-87	N 71°13'02" W	52.81'			
EL-88	S 44°52'20" W	6.69'			
EL-89	S 44°52'20" W	81.88'			
EL-90	N 41°42'20" W	15.26'			
EL-91	N 41°42'20" W	13.20'			
EL-92	N 52°10'19" E	8.73'			
EL-93	S 44°03'31" E	34.12'			
EL-94	N 52°10'19" E	70.91'			
EL-95	N 44°10'16" E	75.67'			
EL-96	S 45°49'48" E	10.00'			
EL-97	N 44°10'16" E	76.70'			
EL-98	S 45°49'44" E	17.00'			
EL-99	S 28°27'41" W	75.07'			
EL-100	S 44°10'16" W	380.20'			
EL-101	S 44°10'15" W	0.53'			
EL-102	N 45°30'06" W	36.49'			
EL-103	N 44°10'15" E	267.11'			
EL-104	N 00°49'45" W	21.00'			
EL-105	N 44°10'16" E	333.12'			



**MILLER**  
Surveying, Inc.  
Commercial • Residential • Municipal  
430 Mid Cities Blvd. Hurst, Texas 76054  
817-577-1052  
mllersurvey.net



**FINAL PLAT**  
**ALDERS AT ROCKWALL**  
**LOT 1, BLOCK A**  
An addition to the City of Rockwall, Rockwall County, Texas  
Being Lot 2, Block A, Rockwall Seniors Addition  
An addition to the City of Rockwall, Texas according to the plat thereof  
recorded as Instrument No. 2018000010493 of the Real Property Records  
Rockwall County, Texas  
And being 10.3100 acres of land out of the  
**B. J. LEWIS SURVEY, ABSTRACT NO. 325**  
Prepared September 2018

**SHEET 2 OF 3**  
City Case No. P2018-035