

P:\65211\Cadd\Modals\Civic-DP0001.dwg 9/20/2019 10:46:05 AM Mulvey, Kyle

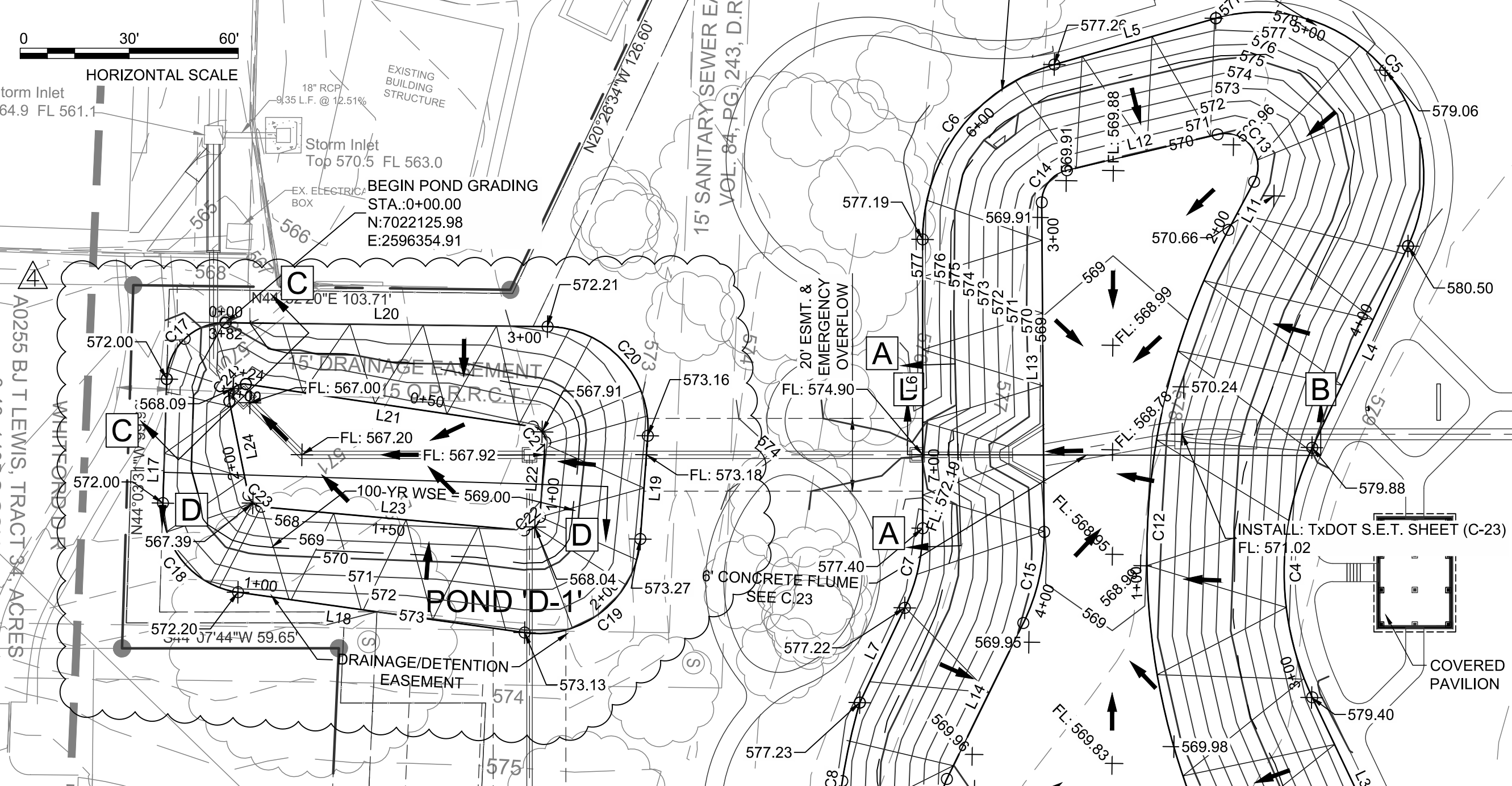
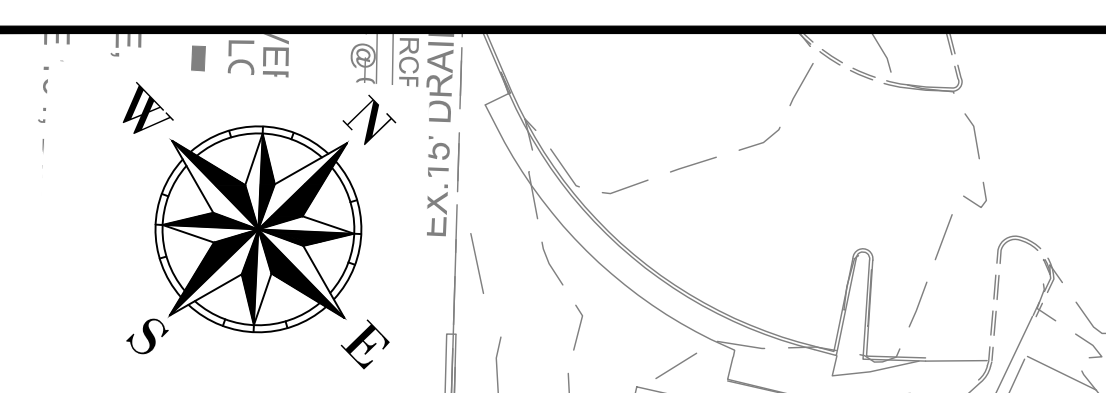
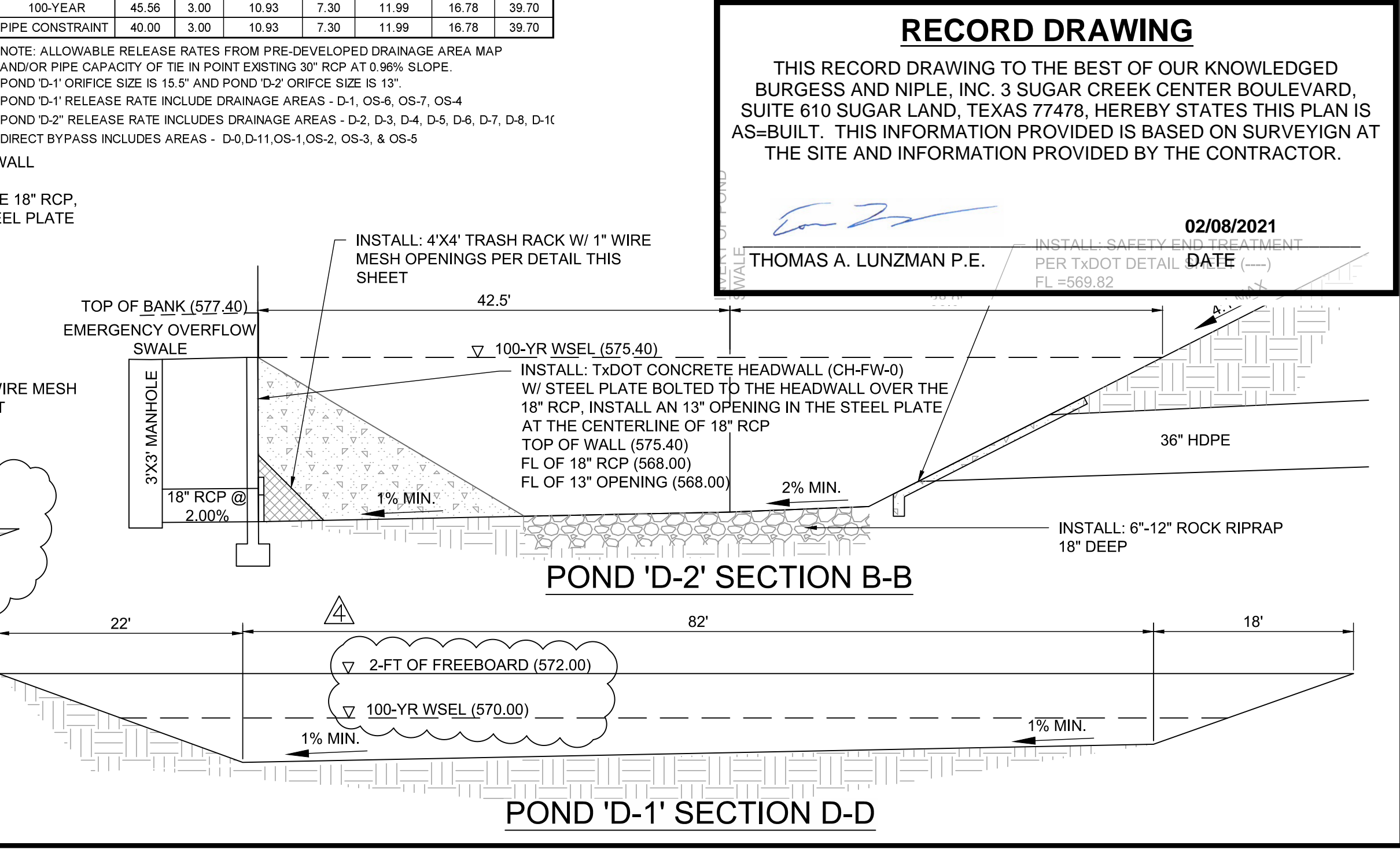
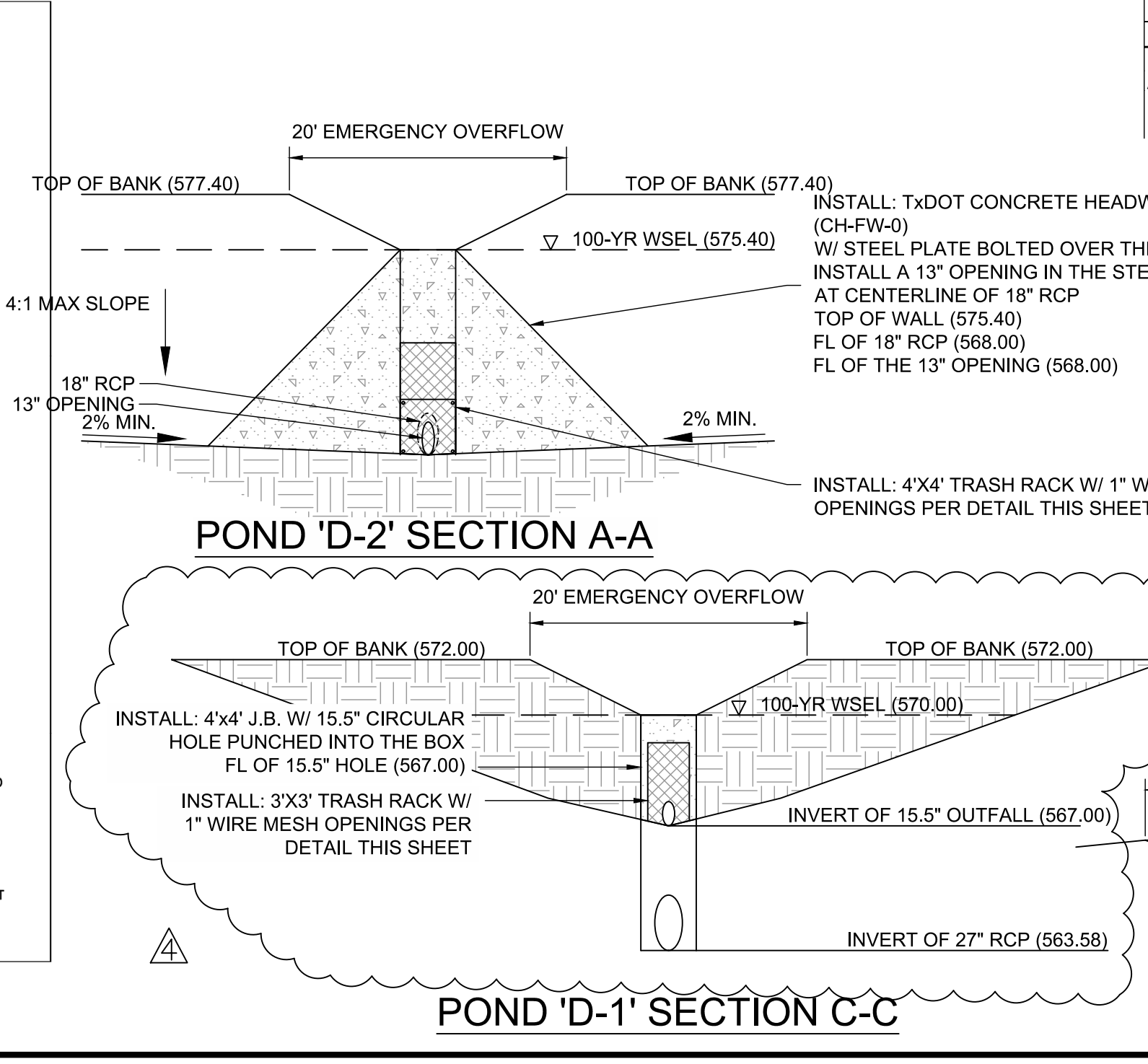
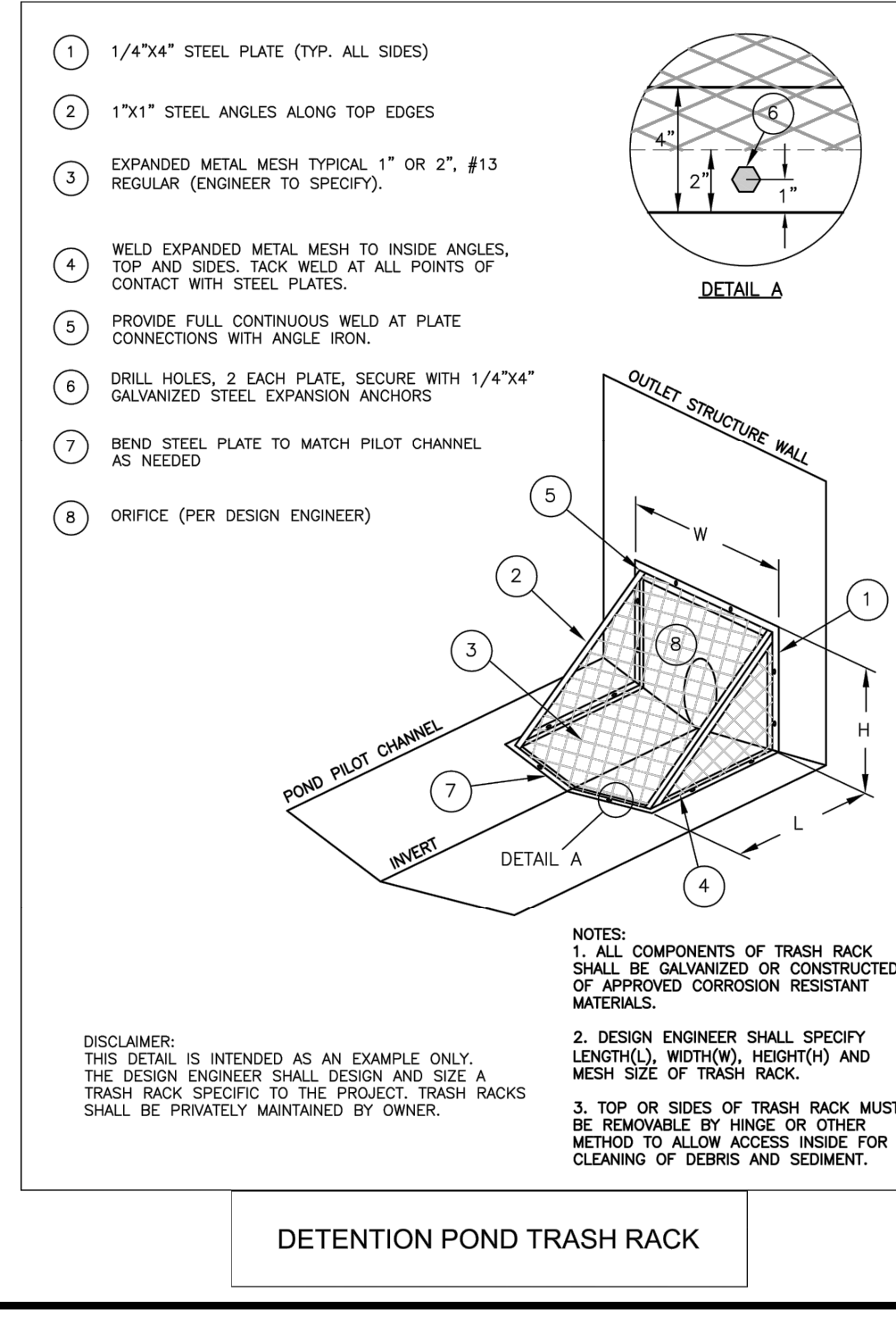


Table with 5 columns: SEGMENT, LENGTH, BEARING, RADIUS, CHORD DIRECTION, START STA., END STA. (POND D-2 TOP BANK)

Table with 5 columns: SEGMENT, LENGTH, BEARING, RADIUS, CHORD DIRECTION, START STA., END STA. (POND D-2 TOE)

Table with 5 columns: SEGMENT, LENGTH, BEARING, RADIUS, CHORD DIRECTION, START STA., END STA. (POND D-1 - TOP BANK (EASEMENT))

Table with 5 columns: SEGMENT, LENGTH, BEARING, RADIUS, CHORD DIRECTION, START STA., END STA. (POND D-1 - TOE (EASEMENT))



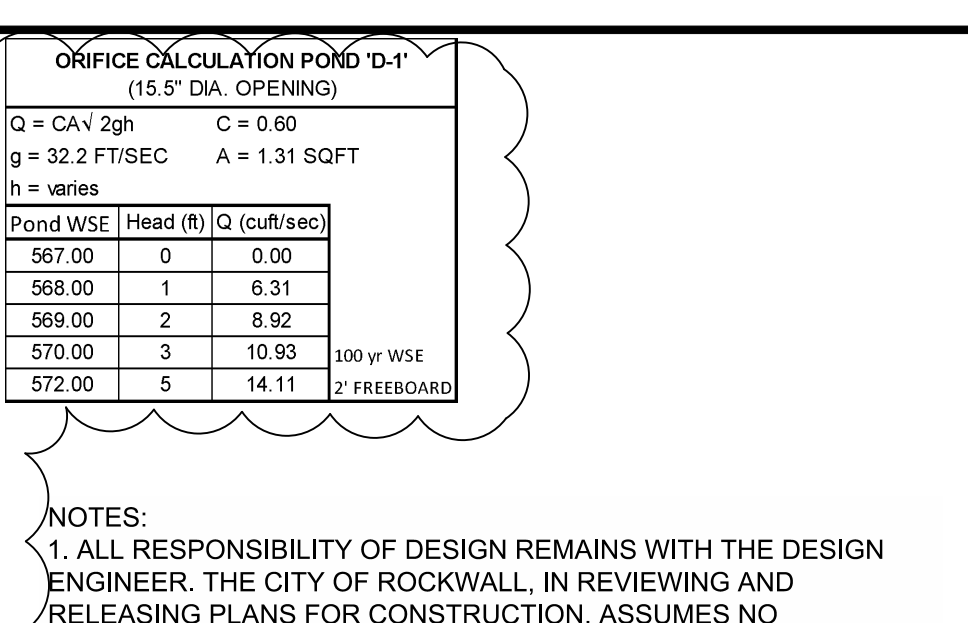
Basin 'D' Pond 'D-1' Required Storage Table (5-Yr Modified Rational) with columns for STEP, Td, C, I, A, Qd, Qa, Vin, Vout, Vreq, Vreq, ELEV.

Basin 'D' Pond 'D-1' Required Storage Table (10-Yr Modified Rational) with columns for STEP, Td, C, I, A, Qd, Qa, Vin, Vout, Vreq, Vreq, ELEV.

Basin 'D' Pond 'D-1' Required Storage Table (25-Yr Modified Rational) with columns for STEP, Td, C, I, A, Qd, Qa, Vin, Vout, Vreq, Vreq, ELEV.

Basin 'D' Pond 'D-1' Required Storage Table (100-Yr Modified Rational) with columns for STEP, Td, C, I, A, Qd, Qa, Vin, Vout, Vreq, Vreq, ELEV.

Basin 'D' Pond 'D-1' Stage Storage / Discharge Table with columns for ELEV., AREA, CONIC INTR., VOL., CONIC CUM. VOL., VOL., DISCHARGE.



NOTES: 1. ALL RESPONSIBILITY OF DESIGN REMAINS WITH THE DESIGN ENGINEER... 2. DETENTION PONDS SHALL HAVE A SIDE SLOPE 4:1 OR FLATTER... 3. DETENTION POND BOTTOM GRADE SHALL BE A MINIMUM OF 1% SLOPE...

5. ANY & ALL DETAILS NOT PROVIDED WITH THESE CONSTRUCTION DRAWINGS, SHALL COME FROM CITY OF ROCKWALL STANDARDS OF DESIGN AND CONSTRUCTION & NCTCOG PUBLIC WORKS CONSTRUCTION STANDARDS FOURTH EDITION.

DETECTION POND 'D-1' REQUIRED STORAGE TABLE IS BASED ON AREA DRAINING TO POND FROM ON-SITE AREAS (AREA THAT DETENTION IS REQUIRED FOR)...

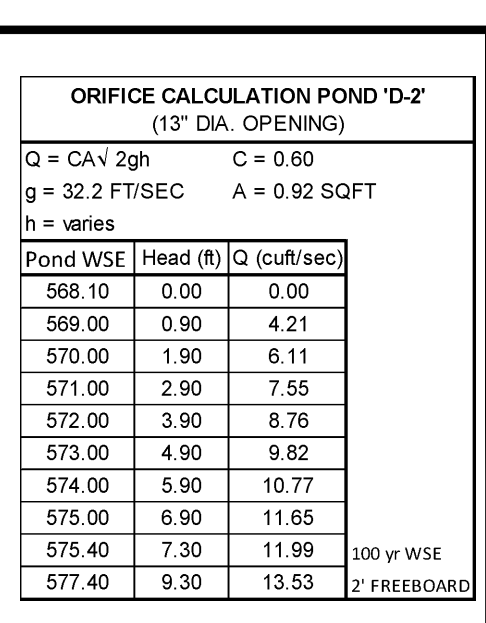
Basin 'D' Pond 'D-2' Required Storage Table (5-Yr Modified Rational) with columns for STEP, Td, C, I, A, Qd, Qa, Vin, Vout, Vreq, Vreq, ELEV.

Basin 'D' Pond 'D-2' Required Storage Table (10-Yr Modified Rational) with columns for STEP, Td, C, I, A, Qd, Qa, Vin, Vout, Vreq, Vreq, ELEV.

Basin 'D' Pond 'D-2' Required Storage Table (25-Yr Modified Rational) with columns for STEP, Td, C, I, A, Qd, Qa, Vin, Vout, Vreq, Vreq, ELEV.

Basin 'D' Pond 'D-2' Required Storage Table (100-Yr Modified Rational) with columns for STEP, Td, C, I, A, Qd, Qa, Vin, Vout, Vreq, Vreq, ELEV.

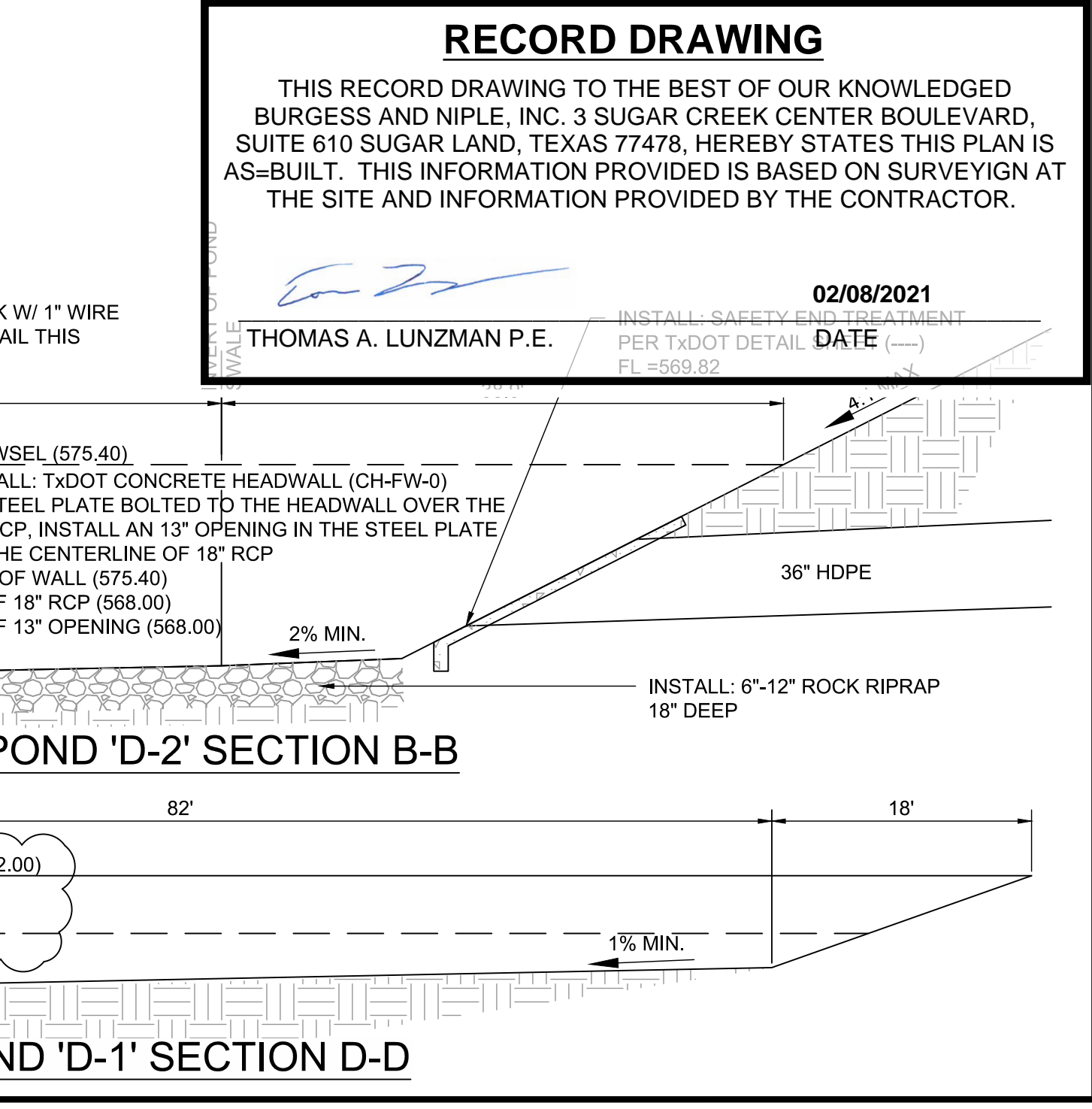
Basin 'D' Pond 'D-2' Stage Storage / Discharge Table with columns for ELEV., AREA, CONIC INTR., VOL., CONIC CUM. VOL., VOL., DISCHARGE.



5. ALL SITE WORK TO BE DONE IN ACCORDANCE WITH THE CITY OF ROCKWALL STANDARDS OF DESIGN AND CONSTRUCTION.

ALLOWABLE RELEASE RATE TABLE - DESIGN POINT 4 with columns for Qallow, H (D-1), POND D-1, POND D-2, DIRECT BYPASS, TOTAL.

ALLOWABLE RELEASE RATE TABLE - DESIGN POINT 4 (continued) with columns for Qallow, H (D-1), POND D-1, POND D-2, DIRECT BYPASS, TOTAL.



Project information including: BURGESS & NIPLÉ, 10701 CORPORATE DR., SUITE 118, STAFFORD, TEXAS 77477, PHONE: (281) 980-7705, TBE FIRM REGISTRATION NO. F-10884, and a revision table.