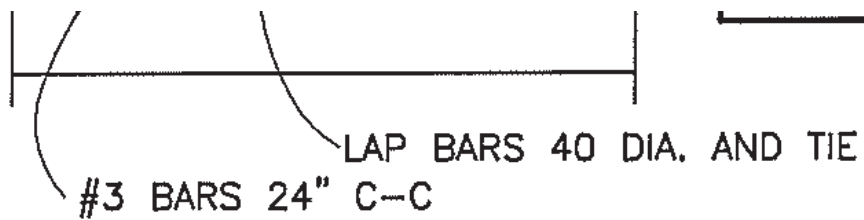
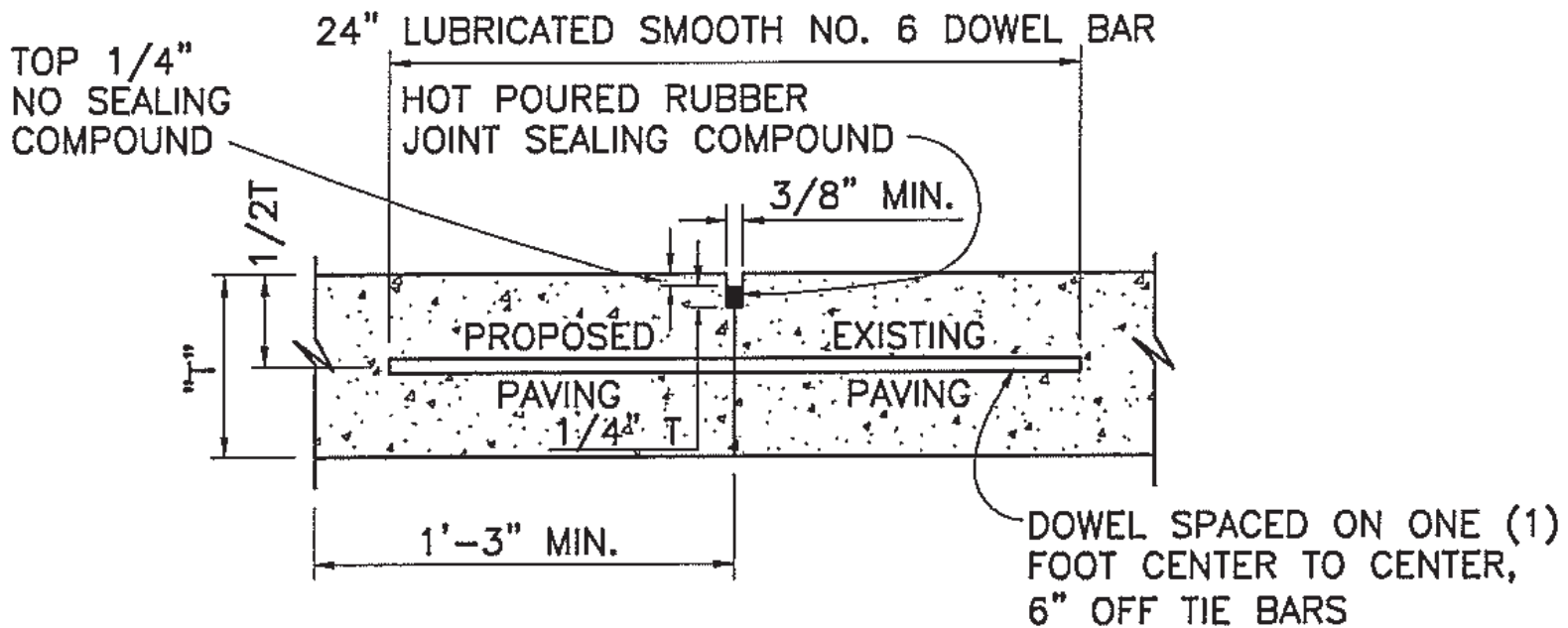


NT SECTION.



LONGITUDINAL CONSTRUCTION JOINT

NOT TO SCALE



NOTES: T=PAVEMENT THICKNESS

1. LONGITUDINAL BUTT CONSTRUCTION MAY BE UTILIZED IN PLACE OF LONGITUDINAL HINGED (KEYWAY) JOINT AT CONTRACTORS OPTION.
2. DOWEL BARS SHALL BE DRILLED INTO PAVEMENT HORIZONTALLY BY USE OF A MECHANICAL RIG.

DRILLING BY HAND IS NOT ACCEPTABLE, PUSHING DOWEL BARS INTO GREEN CONCRETE NOT ACCEPTABLE



LONGITUDINAL BUTT JOINT

NOT TO SCALE