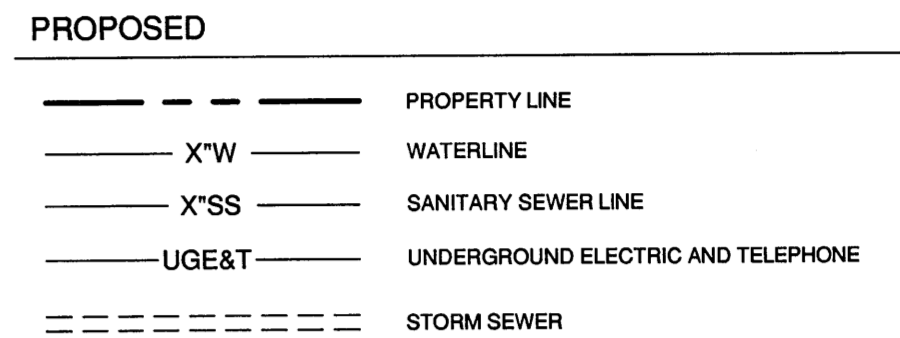
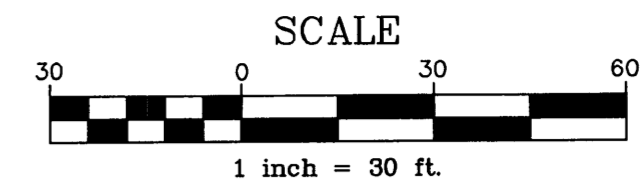
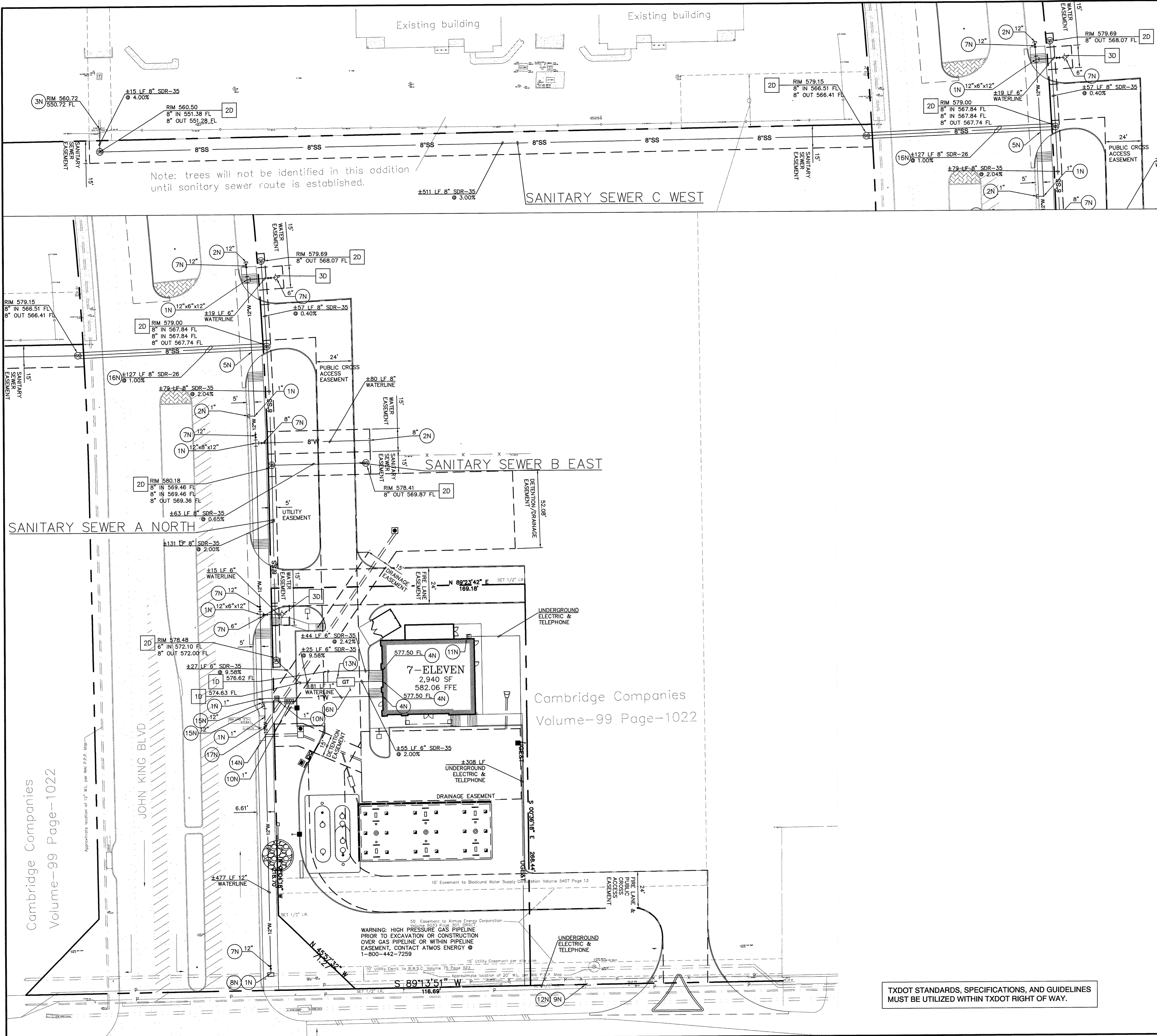


Feb04.2013 11:28am - User: nick.jennett  
 J:\2011 Projects\11-99009 Rockwall, TX Hwy 276\Civil\Drawings\Rev-8 (01-31-13) Record Drawings\11-99009 PROJ.dwg

Cambridge Companies  
 Volume-99 Page-1022



**GENERAL UTILITY NOTES**

1. CONTRACTOR SHALL PROTECT ALL EXISTING UTILITIES AND IS RESPONSIBLE TO REPAIR ANY DAMAGE TO EXISTING UTILITIES AND ADJUSTMENTS DUE TO CHANGE IN GRADE OF ALL EXISTING UTILITIES, INCLUDING DRAINAGE, DURING CONSTRUCTION AT NO COST TO THE OWNER.
2. ALL UTILITIES ARE SHOWN FROM INFORMATION GATHERED AND SHOULD NOT BE USED AS EXACT. CONTRACTOR SHALL VERIFY EXACT DEPTHS AND LOCATIONS PRIOR TO UTILITY INSTALLATION.
3. CONTRACTOR SHALL CONTACT THE APPROPRIATE UTILITY COMPANY FOR INSTALLATION AND SPECIFICATION REQUIREMENTS.
4. ALL PIPE MATERIALS SHALL COMPLY WITH LOCAL REGULATIONS.
5. ALL TRENCHING AND BEDDING SHALL BE PER THE UTILITY TRENCH AND BEDDING DETAIL.
6. CONTRACTOR SHALL REFER TO ARCHITECTURAL PLANS FOR ALL BUILDING UTILITY TIE INS.
7. ALL THRUST BLOCKING SHALL BE PER NCTCOG 3RD EDITION AND ROCKWALL STANDARDS.
8. WATER LINES CROSSING THE ATMOS EASEMENT WILL NEED TO BE PLACED AT LEAST 2 FEET BELOW THE TRANSMISSION LINE.
9. ALL WATER LINES SHALL BE CLASS 200
10. ALL DOMESTIC AND IRRIGATION TAPS TO HAVE BACKFLOW WITH DOUBLE CHECKS AT ALL METERS.
11. ALL MANHOLES TO BE RAVEN LINED OR APPROVED EQUAL.
12. INSTALL BLUE EMS DISKS ON THE WATER LINE AT EVERY CHANGE IN DIRECTION, VALVE, FIRE HYDRANT, OR SERVICE.
13. INSTALL GREEN EMS DISKS ON THE SANITARY SEWER LINE AT EVERY CHANGE IN DIRECTION, MANHOLE, CLEANOUT, AND SERVICE CONNECTION.
14. RIM ELEVATIONS FOR SANITARY SEWER MANHOLES TO THE WEST OF JOHN KING BLVD SHALL BE FIELD VERIFIED TO WORK WITH EXISTING GRADES. TOPOGRAPHIC INFORMATION WAS NOT DETERMINED IN THIS AREA AND RIM ELEVATIONS HAVE BEEN ESTIMATED.

**NOTES**

- 1N. M.J. TEE
- 2N. CAP AND PLUG
- 3N. CONNECT TO EXISTING MANHOLE
- 4N. CONNECT TO BUILDING PER MEP PLANS
- 5N. MAINTAIN 24" VERTICAL SEPARATION
- 6N. MAINTAIN 10' HORIZONTAL SEPARATION
- 7N. GATE VALVE
- 8N. CONNECT TO EXISTING 20" WATER LINE WITH TAPPING SLEEVE PER CITY OF ROCKWALL
- 9N. CONNECT TO EXISTING ELECTRICAL SERVICE PER ONCOR
- 10N. 1" WATER METER PER CITY OF ROCKWALL
- 11N. ELECTRIC METER PER ONCOR
- 12N. CONNECT TO EXISTING TELEPHONE SERVICE PER VERIZON
- 13N. GREASE TRAP PER MECHANICAL PLANS
- 14N. BACKFLOW PREVENTER PER IRRIGATION PLAN, SEE SHEET C6.0
- 15N. 45° BEND SEE PLAN FOR SIZE
- 16N. DIRECTIONAL BORE PER THE CITY OF ROCKWALL
- 17N. CONCRETE ENCASE WATER PIPE TO 10 FEET ON BOTH SIDES OF STORM SEWER CROSSING.

**DETAILS**

- 1D. CLEANOUT PER NCTCOG 3RD EDITION AND ROCKWALL STANDARDS
- 2D. 5" SANITARY SEWER MANHOLE PER NCTCOG 3RD EDITION AND ROCKWALL STANDARDS
- 3D. FIRE HYDRANT

TXDOT STANDARDS, SPECIFICATIONS, AND GUIDELINES MUST BE UTILIZED WITHIN TXDOT RIGHT OF WAY.

**HFA**  
 ARCHITECTS  
 ENGINEERS  
 INTERIORS

**HARRISON FRENCH & ASSOCIATES, LTD.**  
 809 S.W. A Street, Suite 201  
 Bentonville, Arkansas 72712  
 t 479.273.7780  
 f 479.273.9436  
 www.hfa-ac.com

STIPULATION FOR REUSE  
 THIS DRAWING WAS PREPARED FOR USE ON A SPECIFIC SITE AT A SPECIFIC TIME AND DATE AND IS NOT TO BE REUSED OR REPRODUCED IN ANY MANNER WITHOUT THE WRITTEN CONSENT OF HFA. ANY REUSE OF THIS DRAWING FOR ANY OTHER PROJECT WITHOUT THE WRITTEN CONSENT OF HFA IS STRICTLY PROHIBITED. THE USER OF THIS DRAWING AGREES TO HOLD HFA HARMLESS FROM AND AGAINST ALL CLAIMS, DAMAGES, LOSSES AND EXPENSES, INCLUDING REASONABLE ATTORNEY'S FEES, ARISING OUT OF OR RESULTING FROM ANY REUSE OF THIS DRAWING THAT IS NOT AUTHORIZED BY HFA.

**7-ELEVEN**

JOHN KING BLVD & HWY 276  
 ROCKWALL, TEXAS

PROJ. NUMBER: 12-11-99009

ISSUE BLOCK

NO.	DESCRIPTION	DATE

STORE NO.: 1029049  
 DOCUMENT DATE: 2/1/2013  
 CHECKED BY: JWK  
 DRAWN BY: TAB

**Verdad**  
 REAL ESTATE

STATE OF TEXAS  
 THOMAS A. BARRY  
 111978  
 LICENSED PROFESSIONAL ENGINEER

TEXAS COA  
 #F-8576

UTILITY PLAN  
 AS-BUILT

SHEET:  
**C4.0**