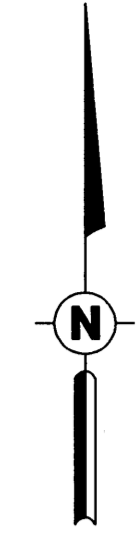
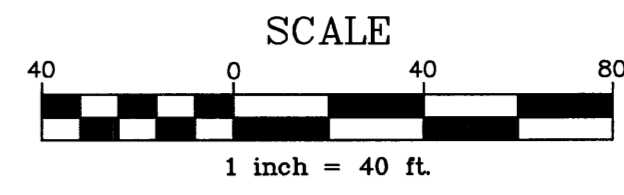
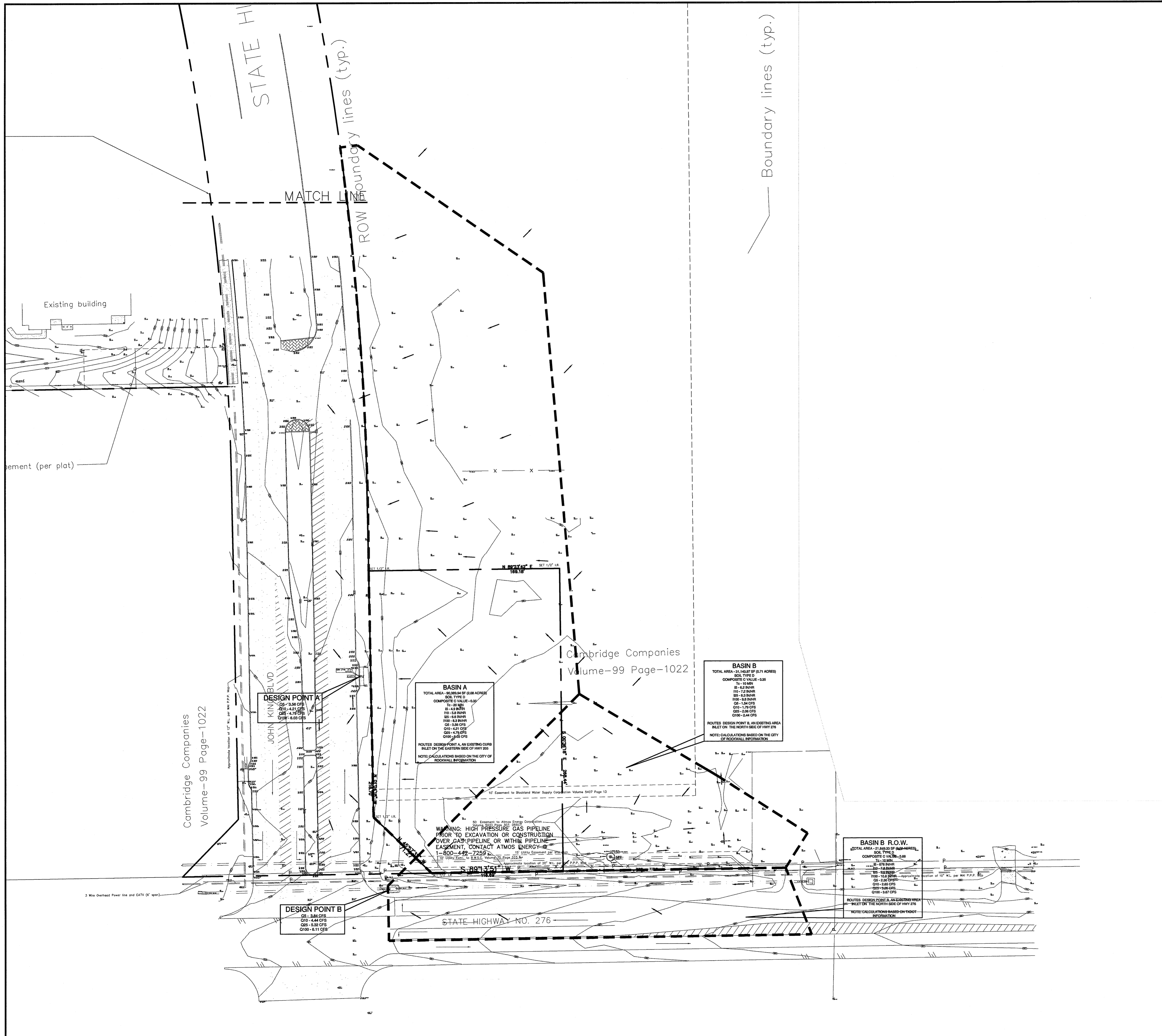


Feb01,2013-10:07am - User: nick_jeffett
 J:\2011 Projects\11-99009 Rockwall, TX Hwy 276\Civil\Civil Dwgs\Rev-8 (01-31-13) Record Drawings\11-99009 PROJ.dwg



PROPOSED

- PROPERTY LINE
- BASIN AREA
- FLOW ARROW

GENERAL DRAINAGE NOTES

- 1. DRAINAGE AREAS BASED ON THE S.H. 205 BYPASS PHASE I DRAINAGE MAP PREPARED BY WEIR & ASSOCIATES, INC. DATED AUGUST 31, 2006.

HFA
 ARCHITECTS
 ENGINEERS
 INTERIORS

HARRISON FRENCH
 & ASSOCIATES, LTD

809 S.W. A Street, Suite 201
 Bentonville, Arkansas 72712
 t 479.273.7780
 f 479.273.9436
 www.hfa-ac.com

STIPULATION FOR REUSE
 THIS DRAWING WAS PREPARED FOR USE ON A SPECIFIC SITE AND IS NOT BE CONTINUED OR REPRODUCED OR RE-USED FOR ANOTHER PROJECT WITHOUT THE WRITTEN PERMISSION OF THE ENGINEER. ANY REUSE OF THIS DRAWING FOR ANY OTHER PROJECT IS NOT AUTHORIZED AND MAY BE CONSIDERED AS A VIOLATION OF THE ENGINEER'S ETHICS.



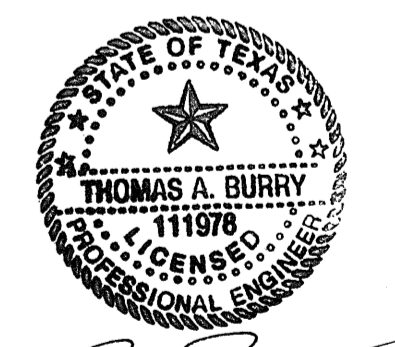
7-ELEVEN

JOHN KING BLVD & HWY 276
 ROCKWALL, TEXAS

PROJ. NUMBER: 12-11-99009

ISSUE BLOCK

STORE NO.: 1029049
 DOCUMENT DATE: 2/1/2013
 CHECKED BY: JWK
 DRAWN BY: TAB



TEXAS COA
 #F-8576

PRE
 DEVELOPED
 DRAINAGE
 MAP
 AS-BUILT

SHEET:
C2.2

TXDOT STANDARDS, SPECIFICATIONS, AND GUIDELINES MUST BE UTILIZED WITHIN TXDOT RIGHT OF WAY.