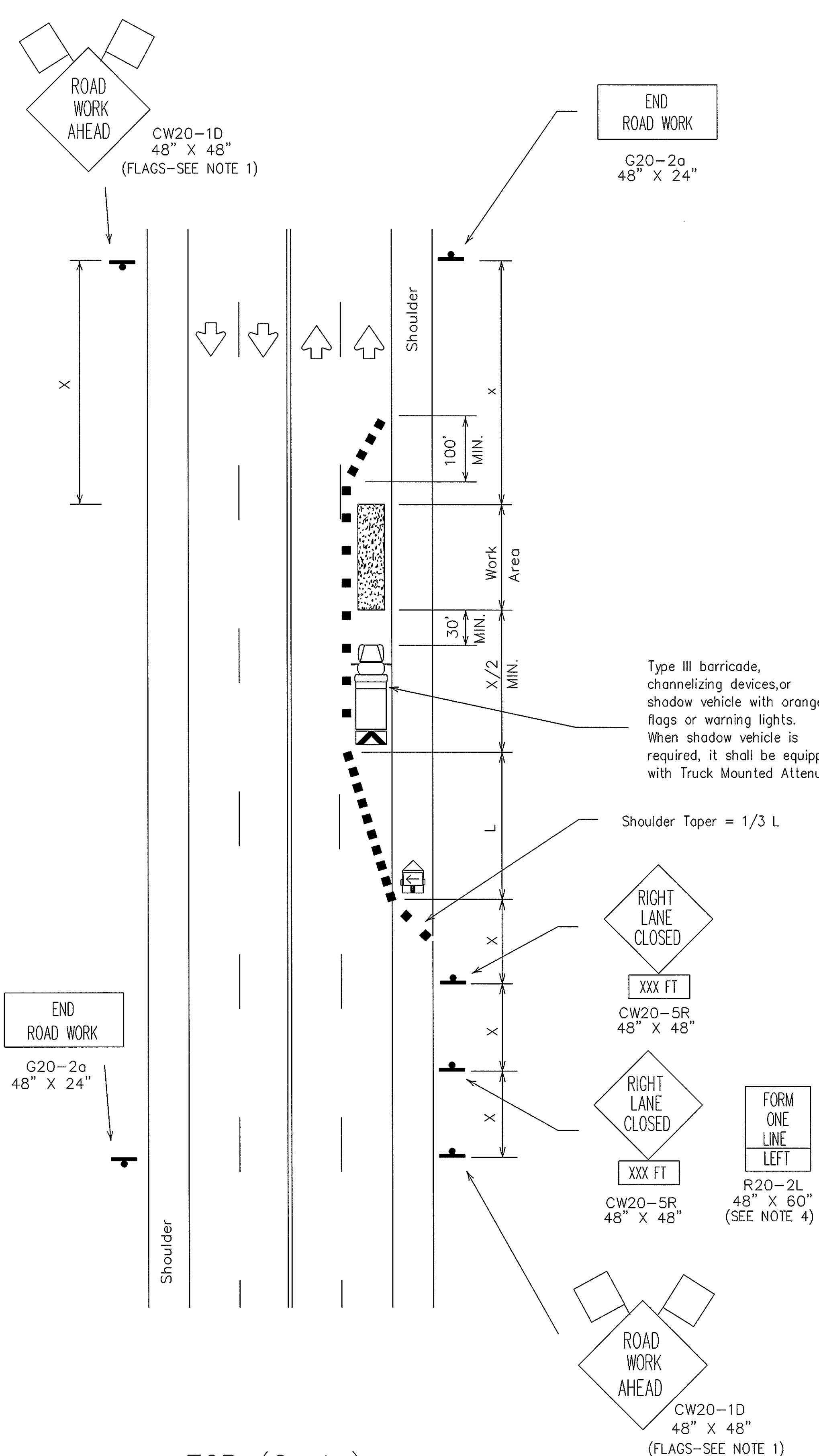


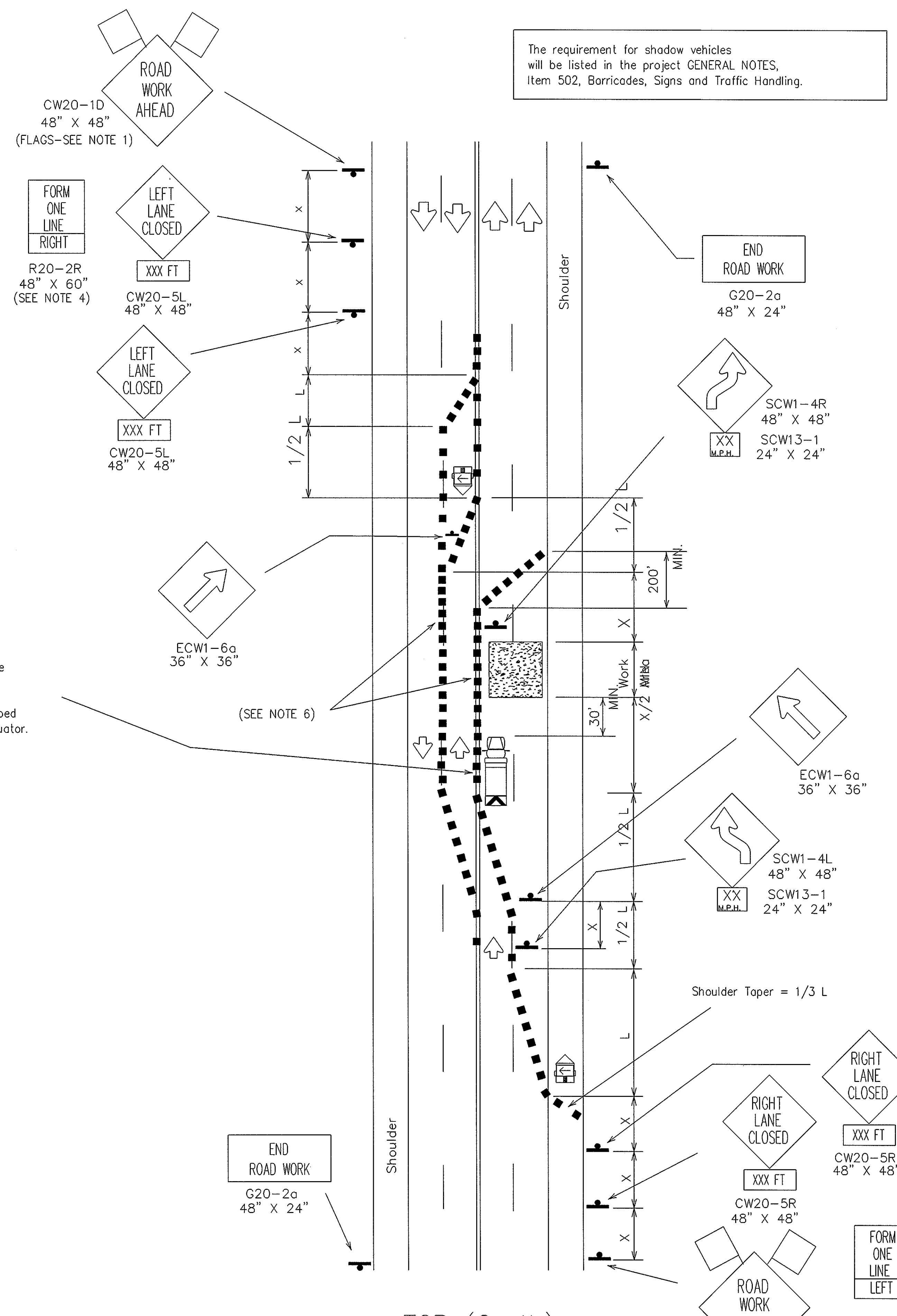
DISCLAIMER
 The use of this standard is governed by the "Texas Engineering Practice Act". No warranty of any kind is made by TxDOT for any purpose whatsoever. TxDOT assumes no responsibility for the conversion of this standard to other formats or for incorrect results or damages resulting from its use.

DN: _____
 CK: _____
 DW: _____
 CK: _____

DATE: _____
 ACC: _____
 FILE: _____



TCP (2-4a)
 One Lane Closed
 Less Than Two Weeks



TCP (2-4b)
 Two Lanes Closed
 Less Than Two Weeks

The requirement for shadow vehicles will be listed in the project GENERAL NOTES, Item 502, Barricades, Signs and Traffic Handling.

LEGEND

- Type III Barricade
- Channelizing Devices
- Flag
- Heavy Work Vehicle
- Mounted Attenuator
- Trailer Mounted Flashing Arrow Panel
- Portable Changeable Message Sign
- Sign Post
- Flagger

Posted Speed *	Formula	Minimum Desirable Taper Lengths * *			Suggested Maximum Spacing of Device		Minimum Sign Spacing X Distance
		10' Offset	11' Offset	12' Offset	On a Taper	On a Tangent	
30	$L = \frac{WS^2}{60}$	150'	165'	180'	30'	60'-75'	120'
35		205'	225'	245'	35'	70'-90'	160'
40		265'	295'	320'	40'	80'-100'	240'
45	L=WS	450'	495'	540'	45'	90'-110'	320'
50		500'	550'	600'	50'	100'-125'	400'
55		550'	605'	660'	55'	110'-140'	500'
60		600'	660'	720'	60'	120'-150'	* 600'
65		650'	715'	780'	65'	130'-165'	* 700'
70		700'	770'	840'	70'	140'-175'	* 800'

* Conventional Roads Only
 ** Taper lengths have been rounded off.
 L=Length of Taper (FT.) W=Width of Offset (FT.) S=Posted Speed (MPH)

TYPICAL USAGE:

	SHORT DURATION	SHORT TERM STATIONARY	INTERMEDIATE TERM STATIONARY	LONG TERM STATIONARY
MOBILE			✓	✓

- GENERAL NOTES:
- Unless otherwise stated in the plans, flags attached to signs are REQUIRED.
 - TCP (2-4b) shall be used only on projects that will be at a location for less than two weeks.
 - Existing pavement markings may remain in place for projects less than two weeks in duration.
 - The FORM ONE LINE LEFT (or RIGHT) sign may be used following the RIGHT (or LEFT) LANE CLOSED XXX FT sign. Spacing distance between signs should be the minimum distance indicated.
 - Downstream taper is optional. When used, it should be 100' minimum length per lane.
 - For intermediate term situations, when it is not feasible to remove and restore pavement markings, the channelization must be made dominant by using a very close spacing. This is especially important in locations of conflicting information, such as where traffic is directed over a double yellow centerline. In such locations a maximum channelizing device spacing of 10 feet is recommended. The 10 foot channelizing device spacing recommendation is intended for the area of conflicting information and not the entire work zone.

STANDARD PLANS
 TEXAS DEPARTMENT OF TRANSPORTATION
 Traffic Operations Division

TRAFFIC CONTROL PLAN

TCP(2-4)-03

© TxDOT December 1985

REVISIONS	STATE DISTRICT	FEDERAL REGION	FEDERAL AID PROJECT	SHEET
8-95		6		
1-97				
4-98				
3-03				

