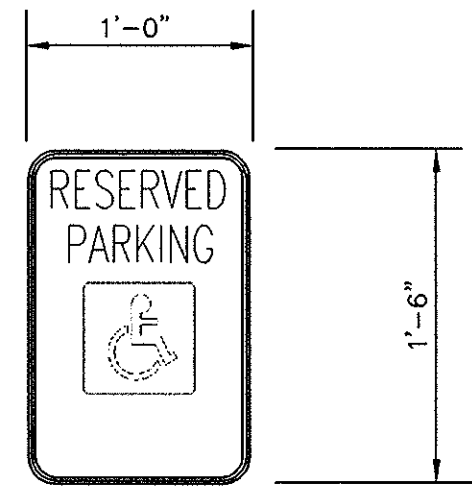
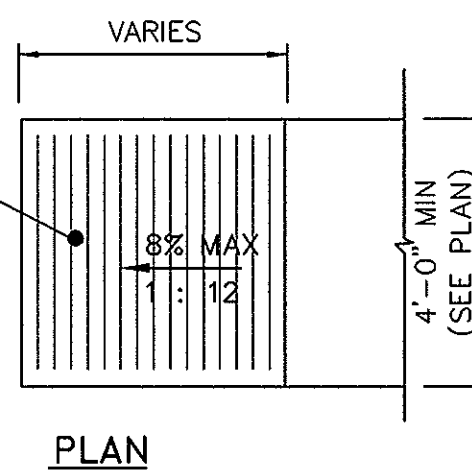
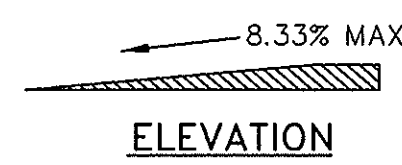


- HANDICAP SIGN NOTES:**
- VERIFY SIGN AND QMNTS. WITH CITY.
 - USE SINGLE OR DOUBLE ARROW DEPENDING ON NUMBER OF REQUIRED SPACES.
 - SIGN COLORS:
LEGEND AND BORDER - GREEN
BACKGROUND - WHITE
HANDICAP SYMBOL - WHITE ON BLUE
 - BOTTOM OF SIGN TO BE MOUNTED AT LEAST 80" ABOVE THE GROUND OR PAVEMENT LEVEL.

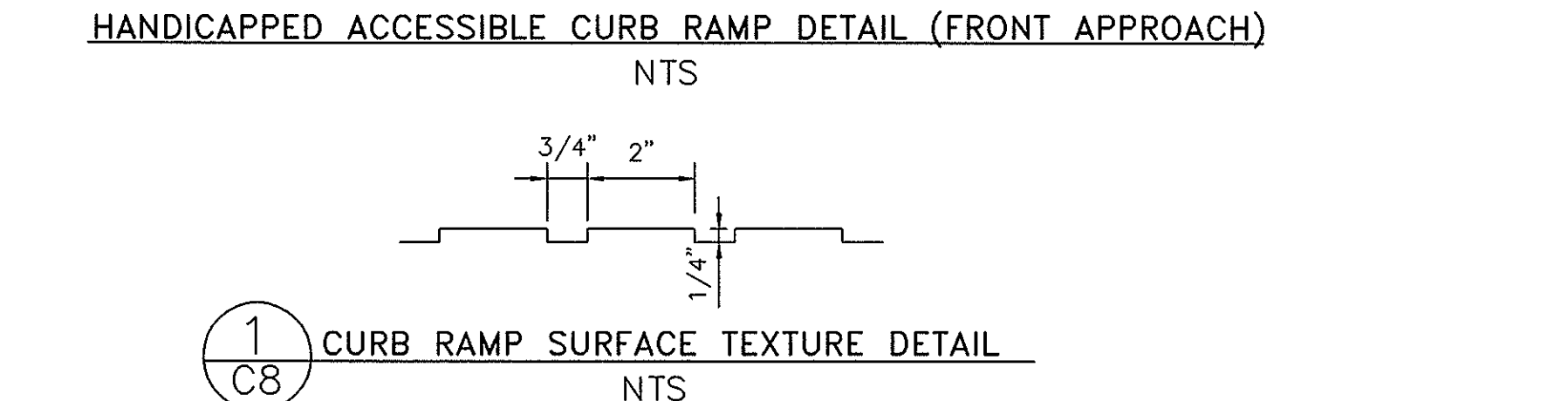
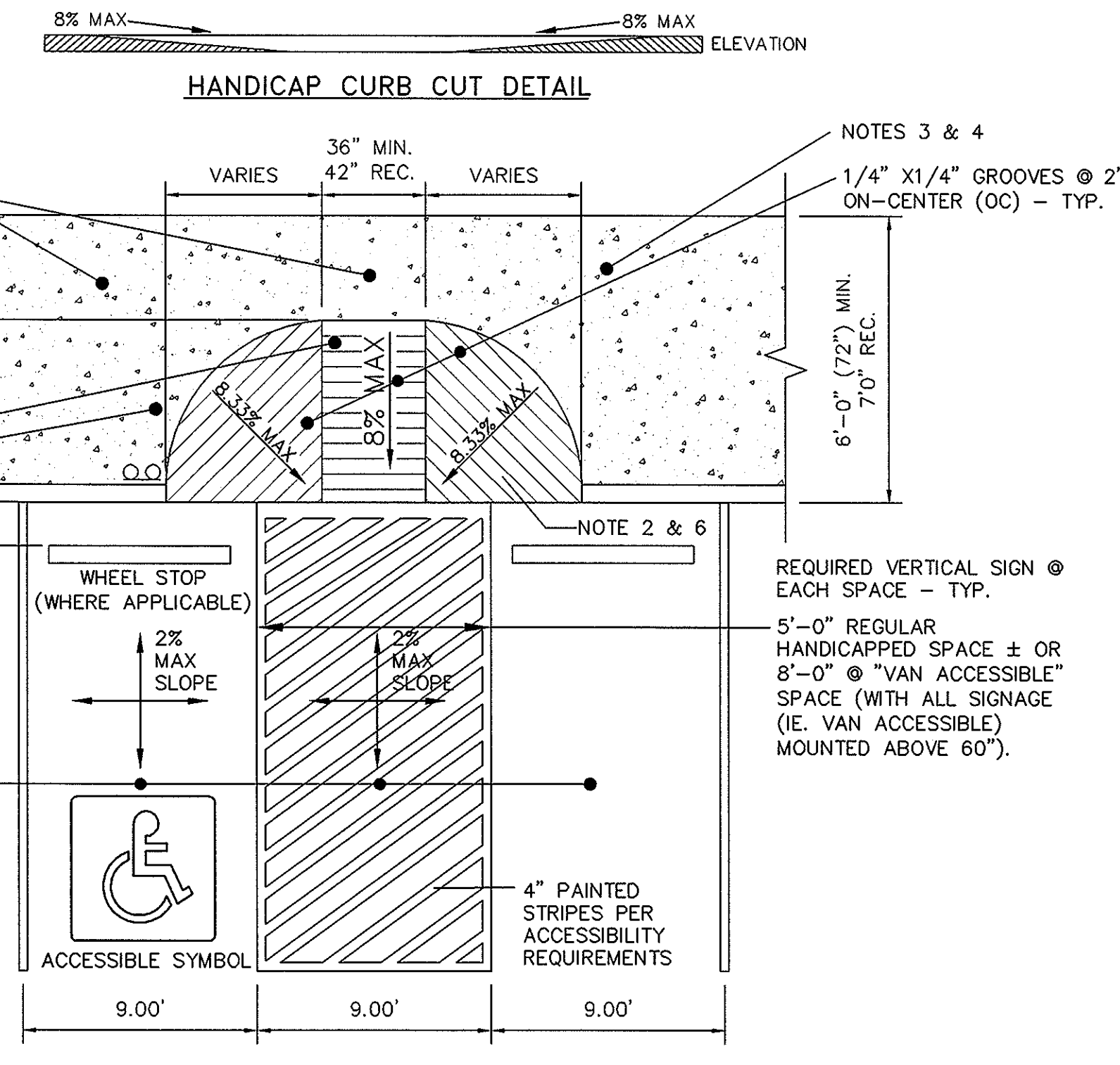
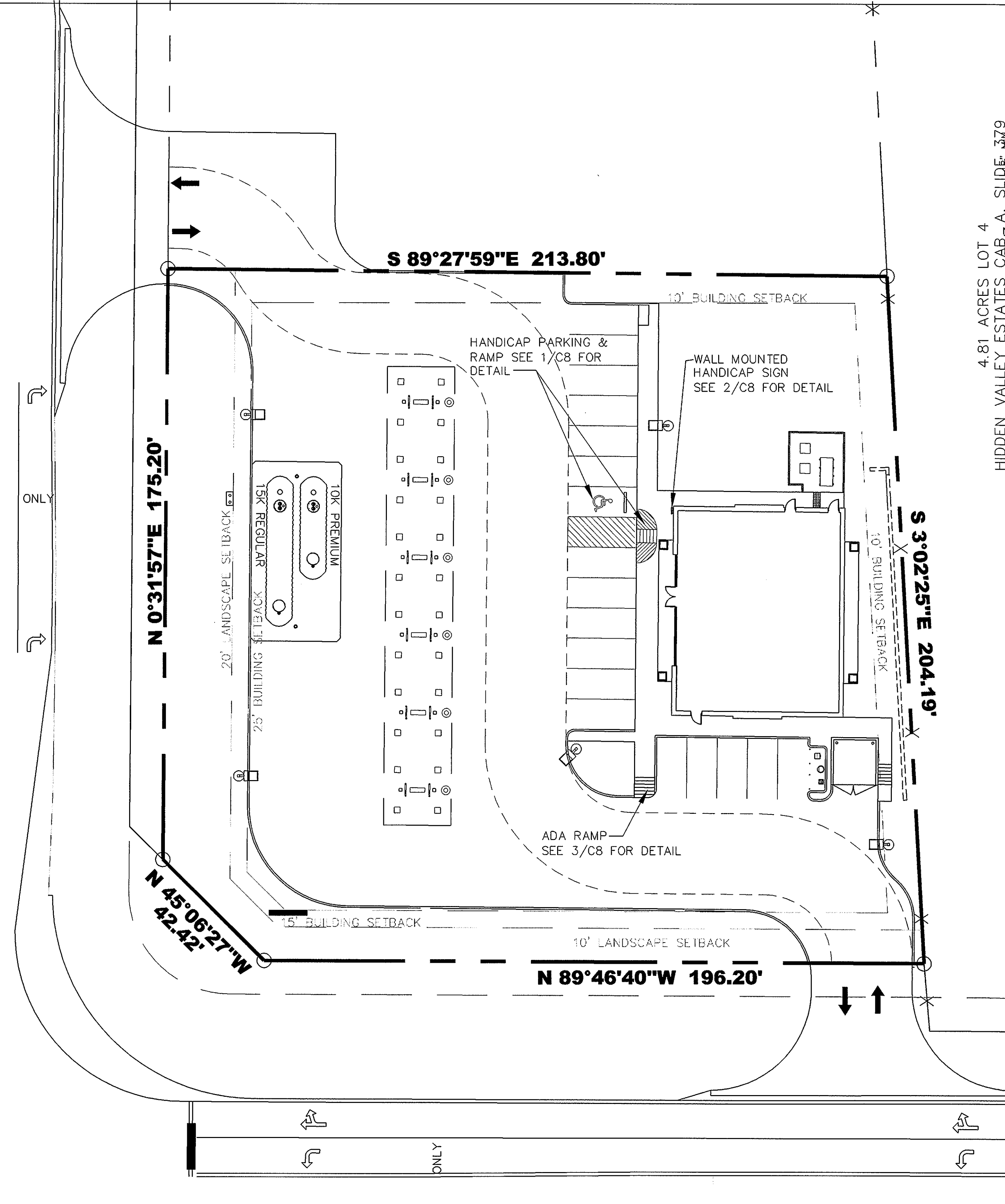


2
C8 TYPICAL WALL MOUNTED HANDICAP SIGNAGE
N.T.S.



3
C8 STANDARD ADA RAMP
N.T.S.

NORTH GOLIAD STREET (S.H. 205)



1
C8 CURB RAMP SURFACE TEXTURE DETAIL
N.T.S.

(DESIGN ASSUMES A 6" HIGH CURB - VERIFY EXACT / SPECIFIC FIELD CONDITION REQUIREMENTS)

- CONSTRUCTION NOTES:**
1. MAXIMUM SLOPE OF CURB RAMP SHALL BE 1:12 (8.33%) - 5% RECOMMENDED.
 2. MAXIMUM SLOPE OF THE CURB RAMP'S "FLARED SIDES" SHALL BE (8.33% MAX).
 3. SLOPE AND CROSS-SLOPE OF A SIDEWALK LEADING INTO A CURB RAMP'S SYSTEM SHALL BE A MAXIMUM OF 1:50 (2%).
 4. MAXIMUM SLOPE OF A HANDICAPPED ACCESSIBLE ROUTE ALONG A SIDEWALK LEADING INTO A CURB RAMP, BEFORE IT MUST BE CONSIDERED A RAMP IS 1:20 (5%).
 5. ALL SLOPED SURFACES AT CURB RAMP SYSTEMS MUST HAVE A "SIGNIFICANT COLOR CONTRAST" FOR THE SEEING IMPAIRED. THEREFORE ALL SUCH SLOPES MUST HAVE "INTEGRAL COLOR IN CONCRETE" OR "STAINED" CONCRETE COMPARED TO THE ADJACENT "FLAT" SIDEWALK/PAVING SURFACE.
 6. SLOPED CURB-RAMP SURFACE TO HAVE TEXTURE (IE.-FORMED/SAWCUT GROVES 3/4" WIDE X 1/4" DEEP @ 2" ON-CENTER PERPENDICULAR TO PATH OF TRAVEL FOR THE BLIND TO FEEL TEXTURE BENEATH THEIR FEET & FOR WHEELCHAIR TRACTION - ARRANGED SO WATER WILL NOT ACCUMULATE.
 7. MAXIMUM SLOPE AND CROSS-SLOPE OF HANDICAPPED ACCESSIBLE PARKING SPACE & ADJACENT ACCESS AISLE IS 1:50 (2%) IN ANY DIRECTION.



F.M. 552

No.	DATE	REVISION / DESCRIPTION	BY	No.	DATE	REVISION / DESCRIPTION	BY

THE DIMENSION GROUP
 CIVIL ENGINEERING • LAND DEVELOPMENT • PLANNING • ARCHITECTURE • CONSTRUCTION MANAGEMENT
 10755 SANDHILL ROAD, DALLAS, TEXAS 75238 TEL: 214-343-9400 FAX: 214-341-9060

PROJECT INFO.
 7-ELEVEN
 N.E.C. OF N. GOLIAD STREET
 & FM 552
 ROCKWALL, TEXAS

DRAWING INFO.
 AS-BUILT
 ADA PLAN

PROJECT No. 06127
 DATE: 05/18/07
 DRAWN BY: CS
 CHECKED BY: RA

SHEET NUMBER
 C8

7-ELEVEN-NE.C. OF N. GOLIAD STREET (SH 205) & FM 552, ROCKWALL, TEXAS