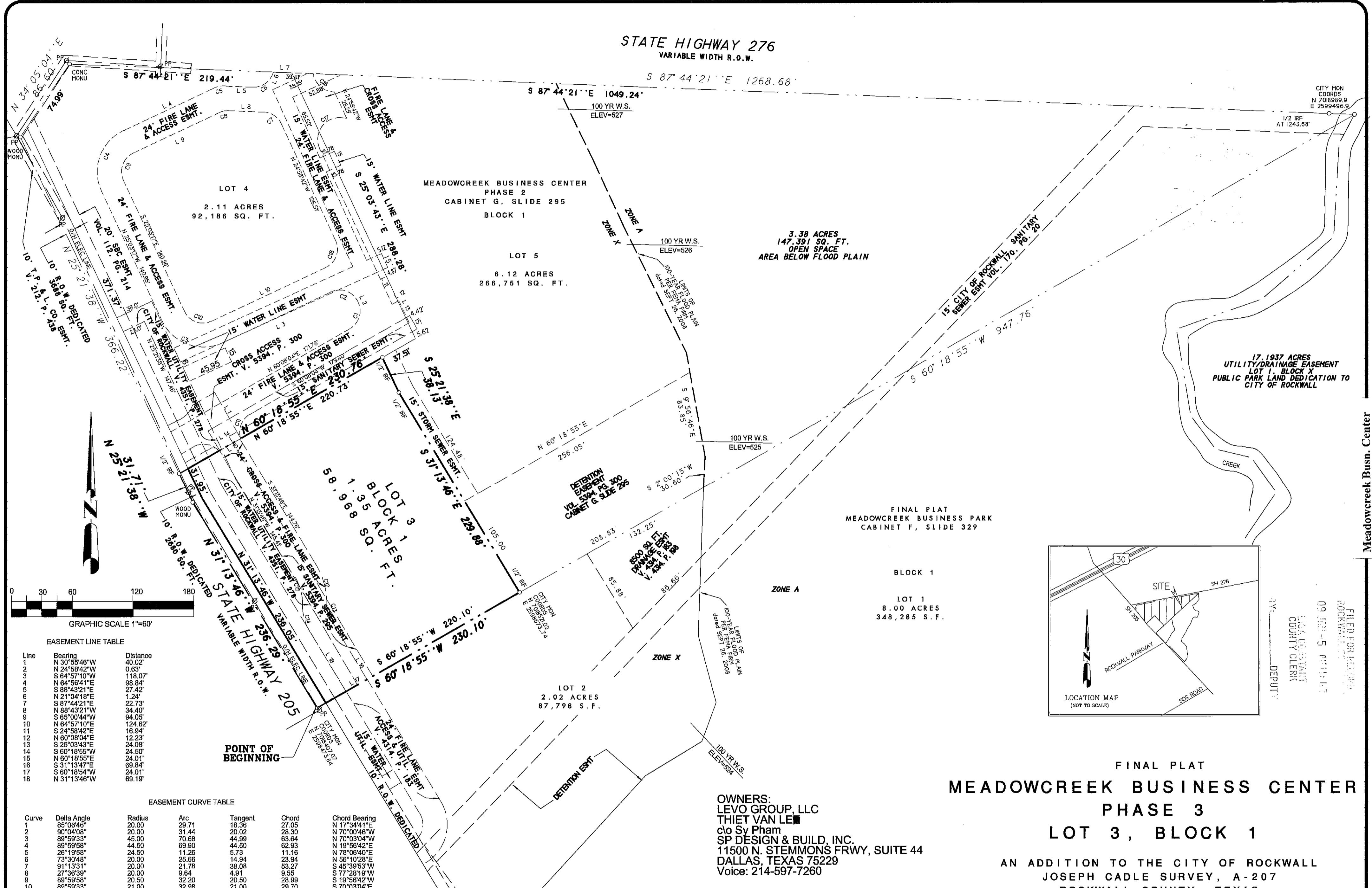


STATE HIGHWAY 276
VARIABLE WIDTH R.O.W.

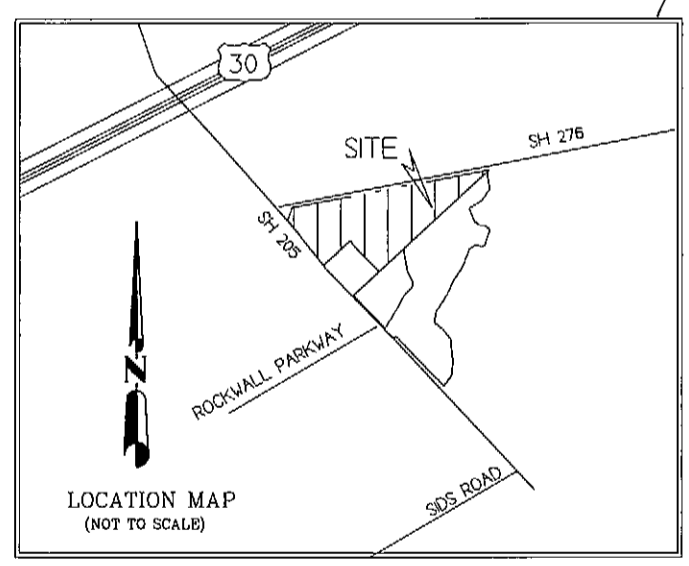


CITY MON
COORDS
N 7018989.9
E 2599496.9
AT 1243.68'

17.1937 ACRES
UTILITY/DRAINAGE EASEMENT
LOT 1, BLOCK X
PUBLIC PARK LAND DEDICATION TO
CITY OF ROCKWALL

FINAL PLAT
MEADOWCREEK BUSINESS PARK
CABINET F, SLIDE 329

BLOCK 1
LOT 1
8.00 ACRES
348,285 S.F.



FILED FOR RECORD
ROCKWALL COUNTY CLERK
09 JAN -5 2008
DEPUTY

FINAL PLAT
**MEADOWCREEK BUSINESS CENTER
PHASE 3
LOT 3, BLOCK 1**
AN ADDITION TO THE CITY OF ROCKWALL
JOSEPH CADLE SURVEY, A-207
ROCKWALL COUNTY, TEXAS

OWNERS:
LEVO GROUP, LLC
THIET VAN LE
c/o Sy Pham
SP DESIGN & BUILD, INC.
11500 N. STEMMONS FRWY, SUITE 44
DALLAS, TEXAS 75229
Voice: 214-597-7260

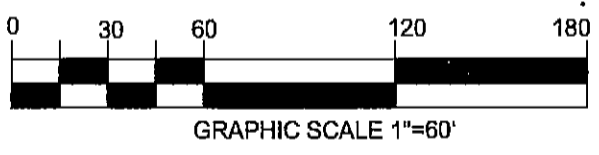
- NOTES
- 1) According to F.E.M.A. Flood Insurance Rate Map, Community Panel No. 480547 0005 C dated June 16, 1992, this property lies in Zones A & X. Part of this property does appear to lie within a 100-year flood plain, and the area shown is by the Master Drainage Study, dated December, 2006 by Nationwide Water Resources and plotted on the ground by the cross section elevations.
 - 2) BEARING SOURCE: RECORDED PLAT IN CAB. F, SLIDE 329, P.R.R.C.T.
 - 3) ALL 1/2" IRS ARE CAPPED WITH YELLOW PLASTIC CAPS "R.S.C.I. RPLS 5034."

EASEMENT LINE TABLE

Line	Bearing	Distance
1	N 30°55'46"W	40.02'
2	N 24°58'42"W	0.63'
3	S 64°57'10"W	118.07'
4	N 64°59'41"E	98.84'
5	S 88°43'21"E	27.42'
6	N 21°04'18"E	1.24'
7	S 87°44'21"E	22.73'
8	N 88°43'21"W	34.40'
9	S 65°00'44"W	94.05'
10	N 64°57'10"E	124.62'
11	S 24°58'42"E	16.94'
12	N 60°08'04"E	12.23'
13	S 25°03'43"E	24.08'
14	S 60°18'55"W	24.50'
15	N 60°18'55"E	24.01'
16	S 31°13'47"E	69.84'
17	S 60°18'54"W	24.01'
18	N 31°13'46"W	69.19'

EASEMENT CURVE TABLE

Curve	Delta Angle	Radius	Arc	Tangent	Chord	Chord Bearing
1	85°06'46"	20.00	29.71	18.36	27.05	N 17°34'41"E
2	90°04'08"	20.00	31.44	20.02	28.30	N 70°00'46"W
3	89°59'33"	45.00	70.68	44.99	63.64	N 70°03'04"W
4	89°59'33"	44.50	69.90	44.50	62.93	N 19°56'42"E
5	28°19'58"	24.50	11.26	5.73	11.16	N 78°08'40"E
6	73°30'48"	20.00	25.66	14.94	23.94	N 56°10'28"E
7	91°13'31"	20.00	21.78	38.08	53.27	S 45°39'53"W
8	27°36'39"	20.00	9.64	4.91	9.65	S 77°28'19"W
9	89°59'58"	20.50	32.20	20.50	28.99	S 19°56'42"W
10	89°59'33"	21.00	32.98	21.00	29.70	S 70°03'04"E
11	78°29'14"	20.00	27.40	16.34	25.30	S 20°53'27"W
12	31°56'53"	74.00	41.26	21.18	40.73	S 15°15'19"E
13	31°56'53"	26.00	14.50	7.44	14.31	S 15°15'19"E
14	31°56'53"	50.00	27.88	14.31	27.52	N 15°15'19"W
15	31°56'53"	80.00	27.88	14.31	27.52	N 15°15'19"W
16	70°52'04"	21.50	29.97	18.00	37.60	S 20°53'27"W
17	120°08'05"	21.50	45.08	37.34	37.26	S 20°53'27"W
18	89°59'58"	20.50	32.20	20.50	28.99	S 19°56'42"W



R.S.C.I.
ROCKWALL SURVEYING CO., INC. LAND SURVEYING
1984 S. FM 551 ROYSE CITY, TX 75189 972-772-5434 PHONE 972-772-5443 FAX

SHEET 1 OF 2

SURVEY DATE JAN 14, 2008
SCALE 1" = 60' FILE# 20050546-PP3
CLIENT LEVO GROUP

G-373