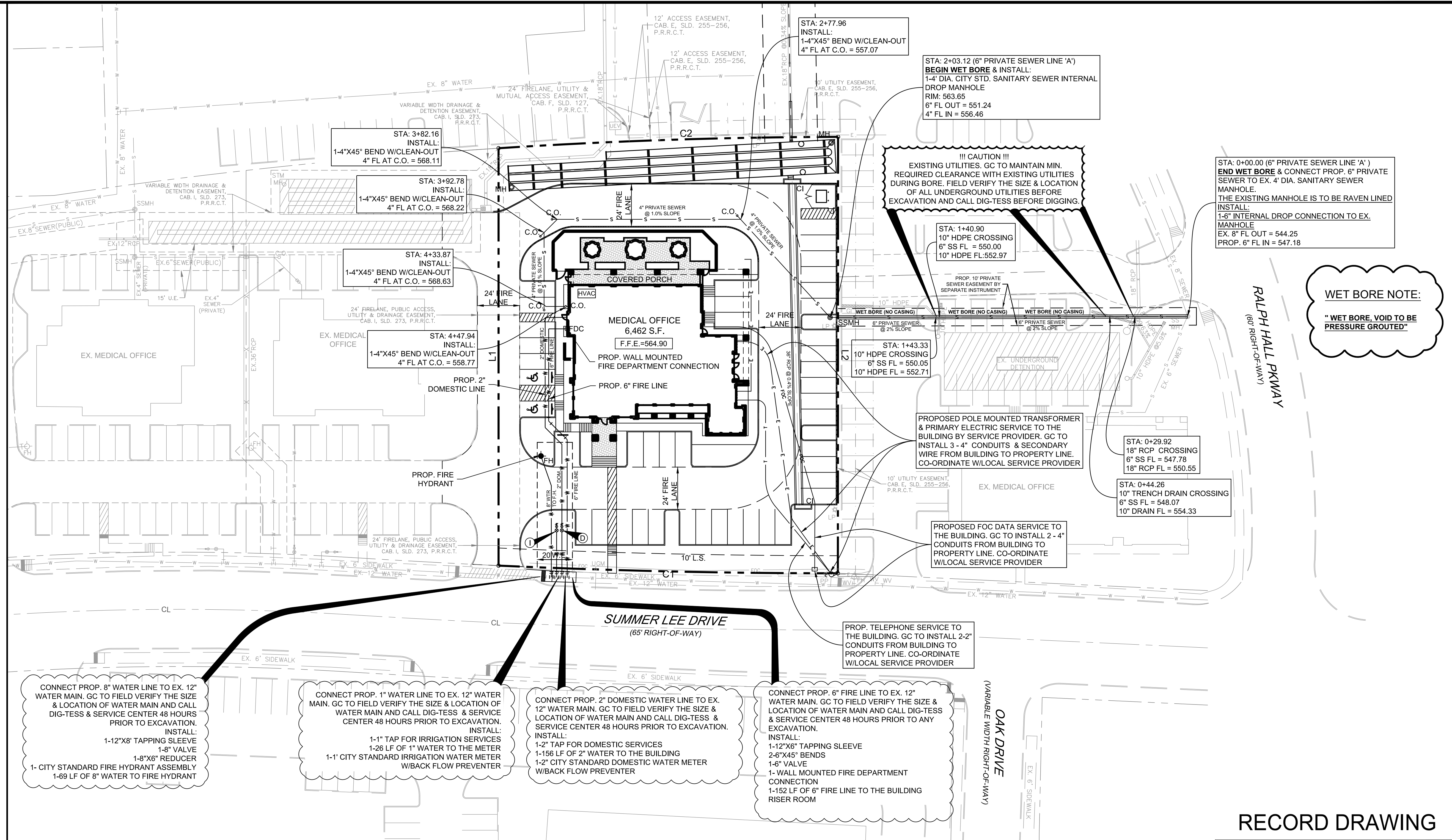


LEGEND	
PUBLIC UTILITY EASEMENT	P.U.E.
SANITARY SEWER EASEMENT	S.E.
DRAINAGE & DETENTION EASEMENT	D.E.
WATERLINE EASEMENT	W.E.
CLEAN OUT	C.O.
GAS METER	GM
ELECTRICAL TRANSFORMER	ET
FH	FH
SANITARY SEWER MANHOLE	SSMH
STORM SEWER MANHOLE	STMMH
BUILDING SET BACK	B.S.
LANDSCAPE SETBACK	L.B.
PRESSURE REDUCING VALVE	PRV
FIRE DEPARTMENT CONNECTION	F.D.C.
GAS MARKER	GMA



CONNECT PROP. 8" WATER LINE TO EX. 12" WATER MAIN. GC TO FIELD VERIFY THE SIZE & LOCATION OF WATER MAIN AND CALL DIG-TESS & SERVICE CENTER 48 HOURS PRIOR TO EXCAVATION.

INSTALL:  
 1-12"x8" TAPPING SLEEVE  
 1-8" VALVE  
 1-8"x6" REDUCER  
 1-CITY STANDARD FIRE HYDRANT ASSEMBLY  
 1-69 LF OF 8" WATER TO FIRE HYDRANT

CONNECT PROP. 1" WATER LINE TO EX. 12" WATER MAIN. GC TO FIELD VERIFY THE SIZE & LOCATION OF WATER MAIN AND CALL DIG-TESS & SERVICE CENTER 48 HOURS PRIOR TO EXCAVATION.

INSTALL:  
 1-1" TAP FOR IRRIGATION SERVICES  
 1-26 LF OF 1" WATER TO THE METER  
 1-1" CITY STANDARD IRRIGATION WATER METER  
 W/BACK FLOW PREVENTER

CONNECT PROP. 2" DOMESTIC WATER LINE TO EX. 12" WATER MAIN. GC TO FIELD VERIFY THE SIZE & LOCATION OF WATER MAIN AND CALL DIG-TESS & SERVICE CENTER 48 HOURS PRIOR TO EXCAVATION.

INSTALL:  
 1-2" TAP FOR DOMESTIC SERVICES  
 1-156 LF OF 2" WATER TO THE BUILDING  
 1-2" CITY STANDARD DOMESTIC WATER METER  
 W/BACK FLOW PREVENTER

CONNECT PROP. 6" FIRE LINE TO EX. 12" WATER MAIN. GC TO FIELD VERIFY THE SIZE & LOCATION OF WATER MAIN AND CALL DIG-TESS & SERVICE CENTER 48 HOURS PRIOR TO ANY EXCAVATION.

INSTALL:  
 1-12"x6" TAPPING SLEEVE  
 2-6"x45" BENDS  
 1-6" VALVE  
 1-WALL MOUNTED FIRE DEPARTMENT CONNECTION  
 1-152 LF OF 6" FIRE LINE TO THE BUILDING RISER ROOM

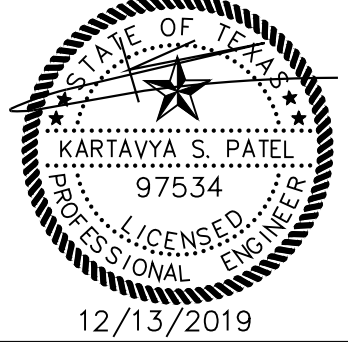
**AS-BUILT DRAWINGS:**  
 TO THE BEST OF OUR KNOWLEDGE TRIANGLE ENGINEERING LLC., HEREBY STATES THAT THIS PLAN IS AS-BUILT. THE INFORMATION PROVIDED IS BASED ON SURVEYING AT THE SITE AND INFORMATION PROVIDED BY THE CONTRACTOR.

KARTAVYA S. PATEL, P.E. NO. 97534

**NOTE:**

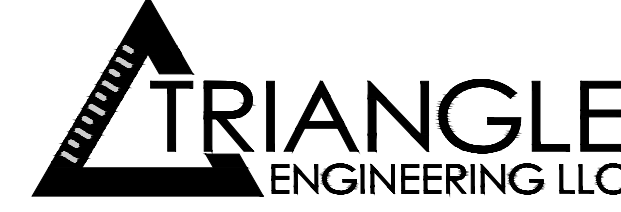
- FIELD VERIFY LOCATION OF EXISTING GAS, TELEPHONE AND ELECTRICAL LINE. CONTRACTOR SHALL BE RESPONSIBLE TO COORDINATE WITH SERVICE PROVIDER.
- CONTRACTOR SHALL REPLACE ANY DAMAGE STREET PAVEMENT, CURB, SIDEWALK AND ANY ABOVE GROUND OR UNDER UTILITIES FOR UTILITY INSTALLATION.

NO.	DATE	DESCRIPTION	BY
1	12/13/2019	AS-BUILT RECORD DRAWING	KP



**RECORD DRAWING**

CASE # SP2017-023  
 UTILITY PLAN  
 OFFICE BUILDING  
 1306 SUMMER LEE DRIVE  
 CITY OF ROCKWALL  
 ROCKWALL COUNTY, TEXAS



T: 214.609.9271 | F: 469.359.6709 | E: kpatel@triangle-engr.com  
 W: triangle-engr.com | O: 1784 W. McDermott Drive, Suite 110, Allen, TX 75013

Planning | Civil Engineering | Construction Management

DESIGN/DRAWN	DATE	SCALE	PROJECT NO.	SHEET NO.
KP	DS	07/04/17	SEC 018-17	8

TX PE FIRM #11525