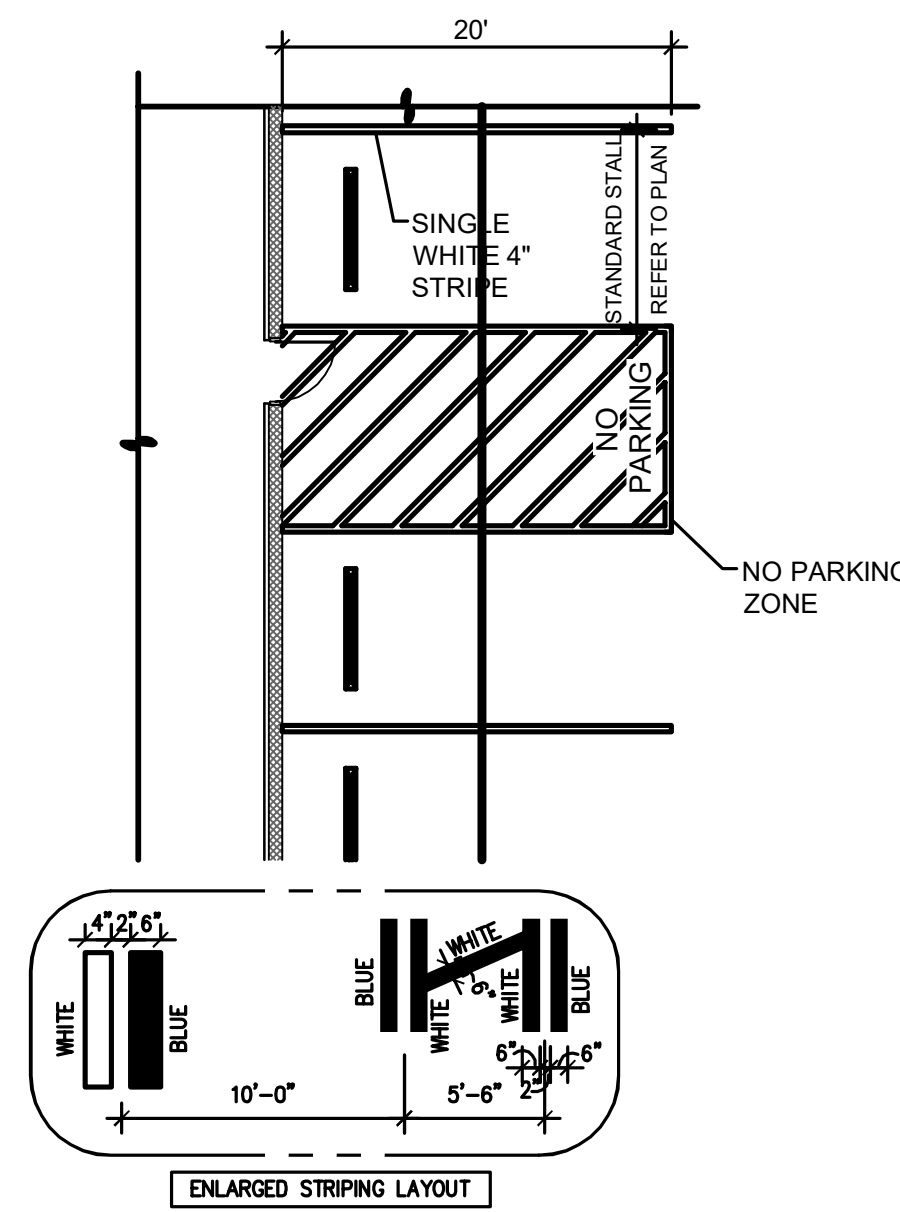


- NOTES:**
1. ALL LETTERS ARE 1" SERIES 'C' PER 2003 MUTCD.
  2. TOP PORTION OF SIGN SHALL HAVE A REFLECTORIZED (ENGINEERING GRADE) BLUE BACKGROUND WITH WHITE REFLECTORIZED LEGEND AND BORDER.
  3. BOTTOM PORTION OF SIGN SHALL HAVE A REFLECTORIZED (ENGINEERING GRADE) WHITE BACKGROUND WITH BLACK OPAQUE LEGEND AND BORDER.
  4. FINE NOTIFICATION SIGN SHALL HAVE A REFLECTORIZED (ENGINEERING GRADE) WHITE BACKGROUND WITH BLACK OPAQUE LEGEND AND BORDER.
- CONTRACTOR SHALL VERIFY FINE AMOUNT AND ORDINANCE NUMBER.
5. ONE (1) SIGN REQUIRED FOR EACH ACCESSIBLE PARKING SPACE.
  6. INSTALLED HEIGHT OF SIGN SHALL BE IN ACCORDANCE WITH SECTION 24-23 OF THE MANUAL ON UNIFORM TRAFFIC CONTROL DEVICES. (MUTCD)
  7. SIGN MAY BE MOUNTED ON BUILDING/WALL, AT PROPER HEIGHT, IF ALIGNED WITHIN 12" OF CENTER OF PARKING SPACE.

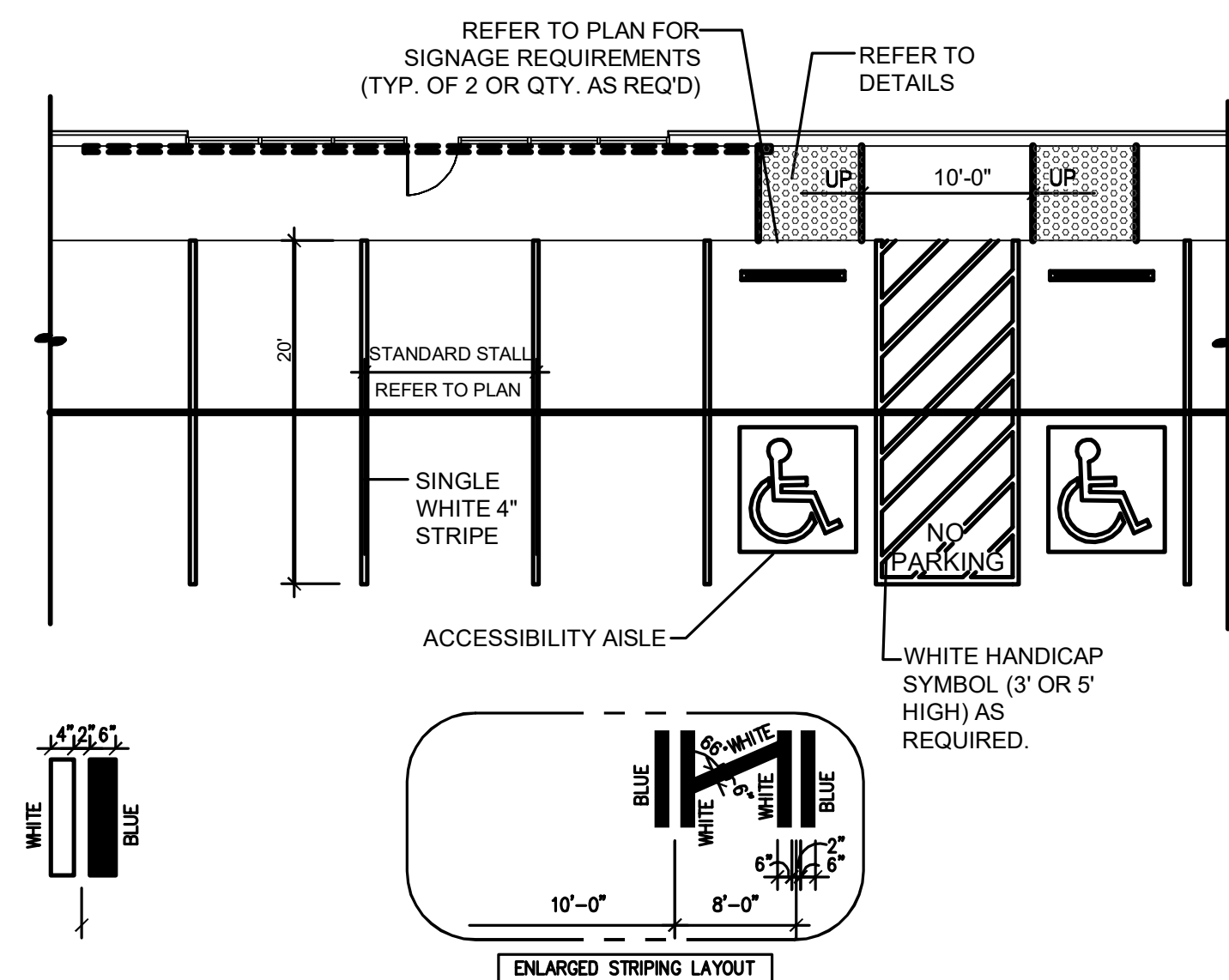
**HANDICAP SIGNAGE**  
N.T.S.



**NO PARKING AREA STRIPING PLAN**  
N.T.S.

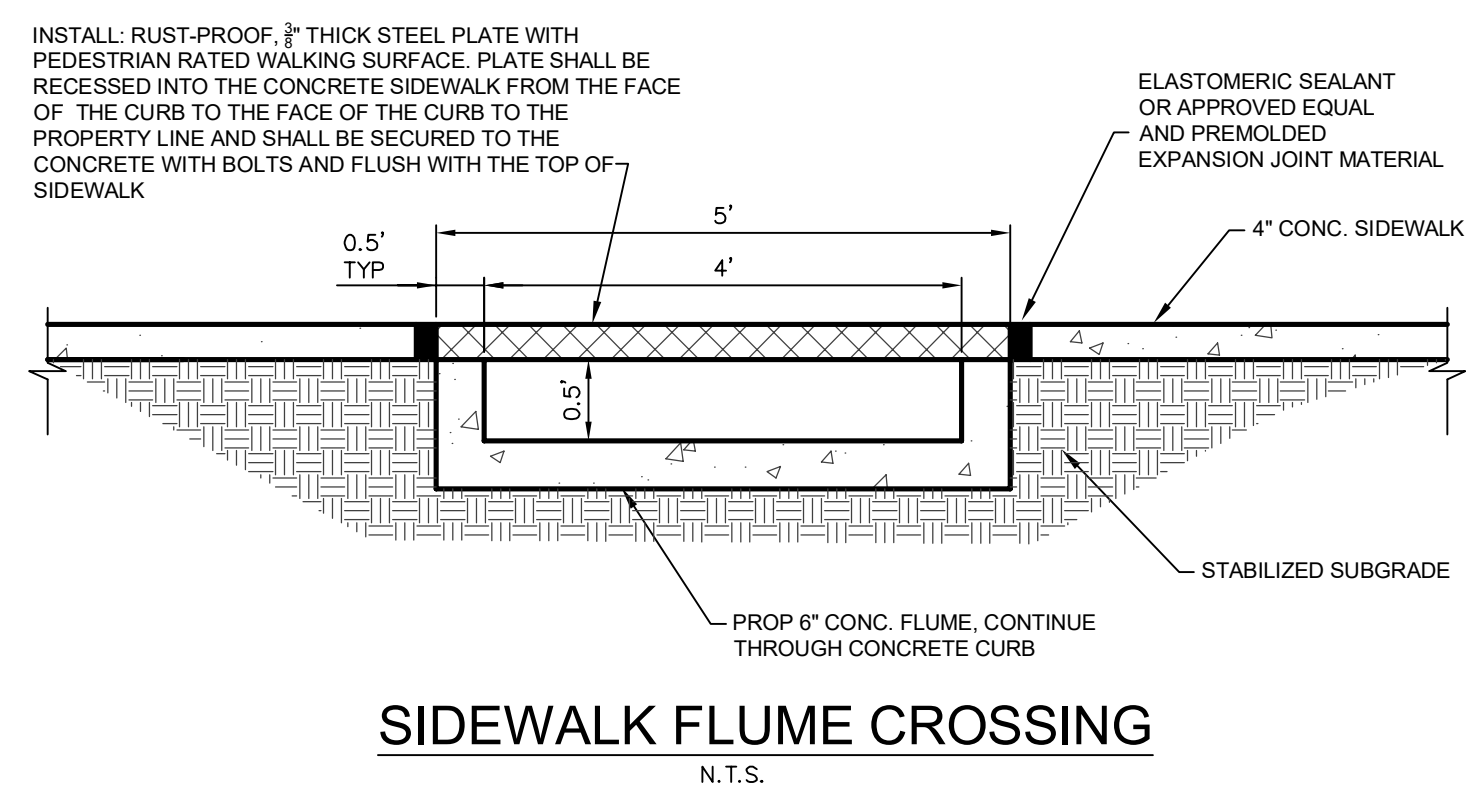
**ACCESSIBILITY PARKING SPACES**

- NOTES:**
- A PAVED ACCESSIBLE PARKING SPACE MUST INCLUDE:
1. THE INTERNATIONAL SYMBOL OF ACCESSIBILITY PAINTED CONSPICUOUSLY ON THE SURFACE IN A COLOR THAT CONTRASTS THE PAVEMENT.
  2. THE WORDS "NO PARKING" PAINTED ON ANY ACCESS AISLE ADJACENT TO THE PARKING SPACE. THE WORDS MUST BE PAINTED:
    - (A) IN ALL CAPITAL LETTERS;
    - (B) WITH A LETTER HEIGHT OF AT LEAST TWELVE INCHES, AND A STROKE WIDTH OF AT LEAST TWO INCHES; AND
    - (C) CENTERED WITHIN EACH ACCESS AISLE ADJACENT TO THE PARKING SPACE.
  3. A SIGN IDENTIFYING THE CONSEQUENCES OF PARKING ILLEGALLY IN A PAVED ACCESSIBLE PARKING SPACE. THE SIGN MUST:
    - (A) AT A MINIMUM STATE "VIOLATORS SUBJECT TO FINE AND TOWING" IN A LETTER HEIGHT OF AT LEAST ONE INCH;
    - (B) BE MOUNTED ON A POLE, POST, WALL OR FREESTANDING BOARD;
    - (C) BE NO MORE THAN EIGHT INCHES BELOW A SIGN REQUIRED BY TEXAS ACCESSIBILITY STANDARDS, 502.6; AND
    - (D) BE INSTALLED SO THAT THE BOTTOM EDGE OF THE SIGN IS NO LOWER THAN 48 INCHES AND NO HIGHER THAN 80 INCHES ABOVE GROUND LEVEL.

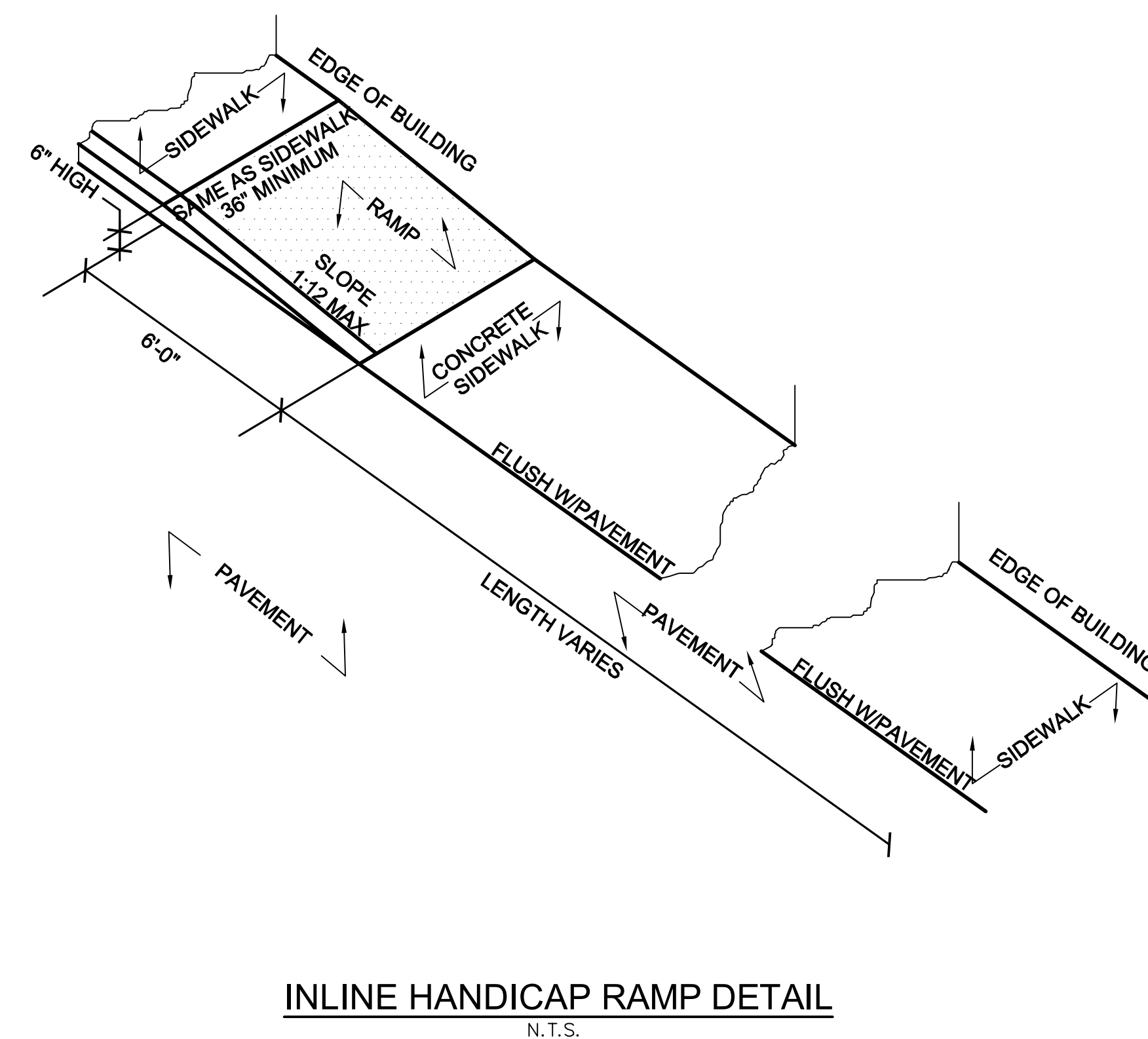


**SITE ACCESSIBILITY DETAIL NOTES:**

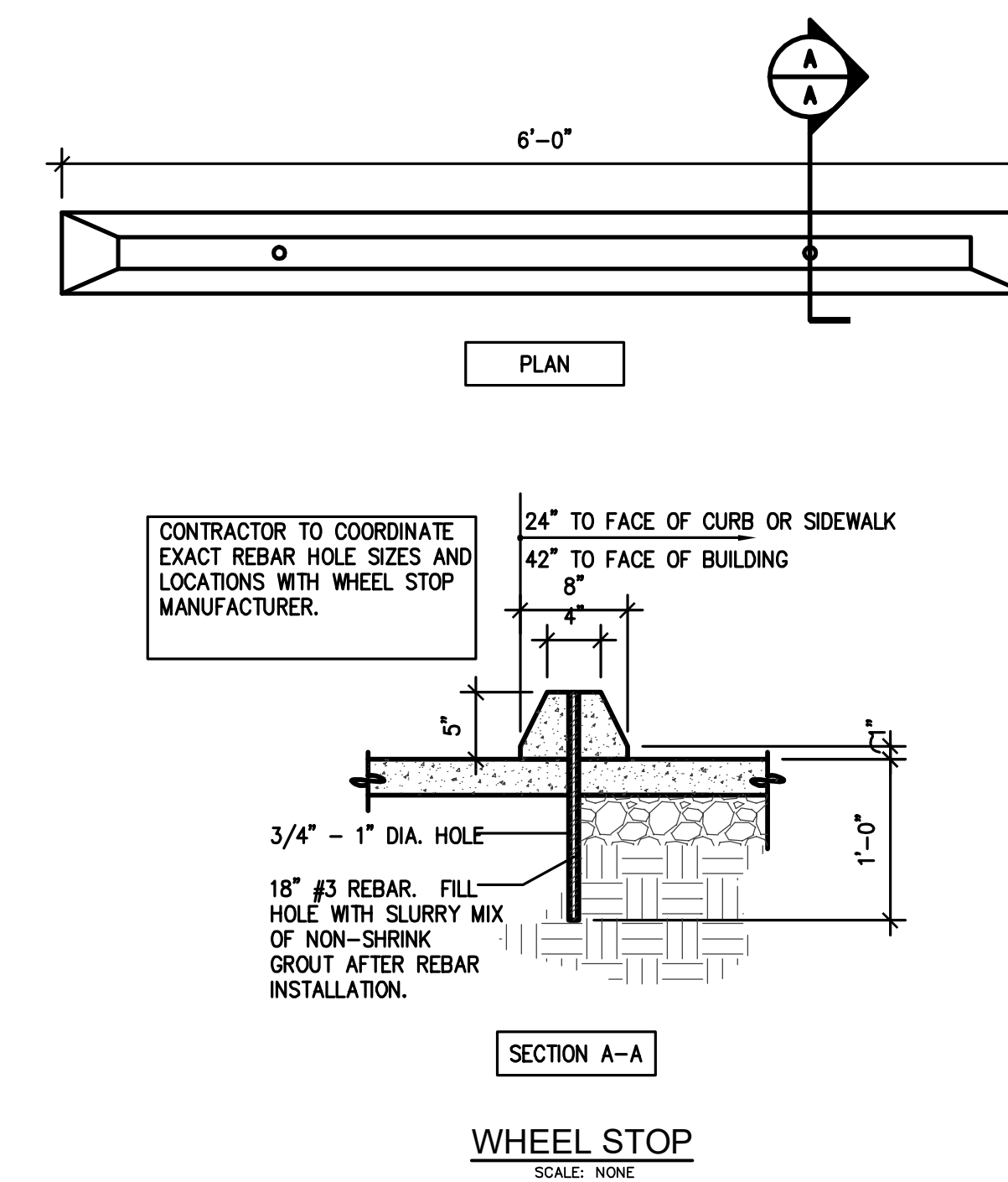
1. REFER TO SITE PLAN FOR EXACT LOCATION OF HANDICAP PARKING, WALKWAYS AND RAMPS.
2. ALL WALKWAYS, RAMPS, AND HANDICAP PARKING SIGNAGE, ETC. SHALL MEET APPROVED AMERICANS WITH DISABILITIES ACT (ADA) STANDARDS AND LOCAL ACCESSIBILITY CODE.
3. ONE OUT OF EVERY EIGHT (8) ACCESSIBLE PARKING SPACES, BUT NOT LESS THAN ONE, IS REQUIRED TO BE VAN ACCESSIBLE.
4. ACCESSIBLE RAMPS
  - 4.1. ALL CONCRETE ACCESSIBLE RAMPS (3000 PSI) SURFACES SHALL HAVE A "WARNING SURFACE TILE" WITH SCREW DOWN TRUNCATED DOMES PER ADA STANDARDS AND LOCAL ACCESSIBILITY CODE(S).
  - 4.2. RAMPS ARE TO BE COLOR IMPREGNATED TO PROVIDE VISUAL CONTRAST (DARK TO LIGHT) WITH ADJACENT CONCRETE SURFACES (MIN. 70% COLOR CONTRAST)
5. FINISHED GRADES OF PAVEMENT IN HC PARKING AND ACCESSIBILITY AISLE SHALL NOT EXCEED 1:50 SLOPE IN ANY DIRECTION
6. THE WORDS "NO PARKING" PAINTED ON ANY ACCESS AISLE ADJACENT TO THE PARKING SPACE.



**SIDEWALK FLUME CROSSING**  
N.T.S.



**INLINE HANDICAP RAMP DETAIL**  
N.T.S.



**WHEEL STOP**  
SCALE: NONE

NOT FOR REGULATORY APPROVAL, PERMITTING, OR CONSTRUCTION



Revision Schedule		
Rev. #	Revision Description	Revision Date



Carrillo Engineering, LLC

301 Commerce Street, Ste 1410 - Fort Worth, Texas 76102  
Phone 817-697-4996 - Firm Registration #F-15893

**OWT ARCHITECTS**

509 PECAN STREET  
SUITE 100  
FORT WORTH, TX 76102  
817.993.9844

www.owtarchitects.com

**ROCKWALL DFPS**

ELLIS CENTRE #2 ADDITION  
BOCK C, LOT 3A-R  
1203 SIGMA CT,  
ROCKWALL, TX 75087

3/1/2021

ISSUE DATE

**SITE SPECIFIC DETAILS (PRIVATE)**

**C8.01**

**RECORD DRAWING**

TO THE BEST OF OUR KNOWLEDGE CARRILLO ENGINEERING, HEREBY STATES THAT THIS PLAN IS AS-BUILT. THE INFORMATION PROVIDED IS BASED ON SURVEYING AT THE SITE AND INFORMATION PROVIDED BY THE CONTRACTOR.

DATE: SEPTEMBER 27, 2021