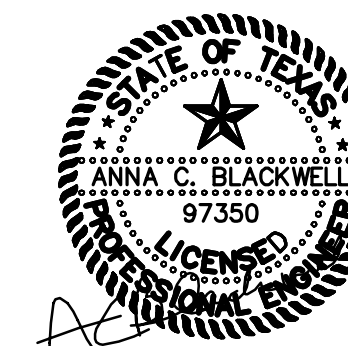
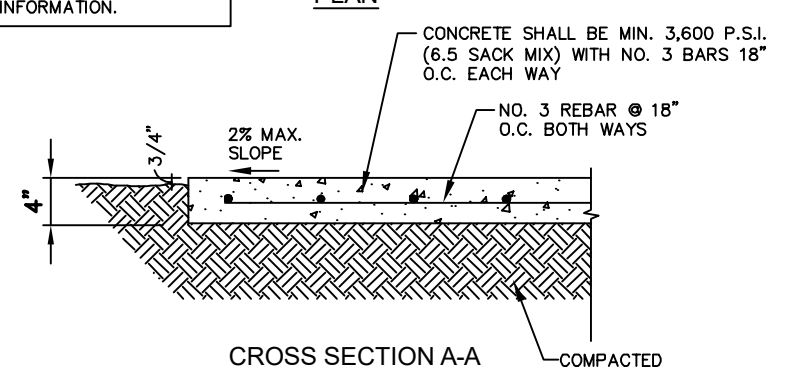
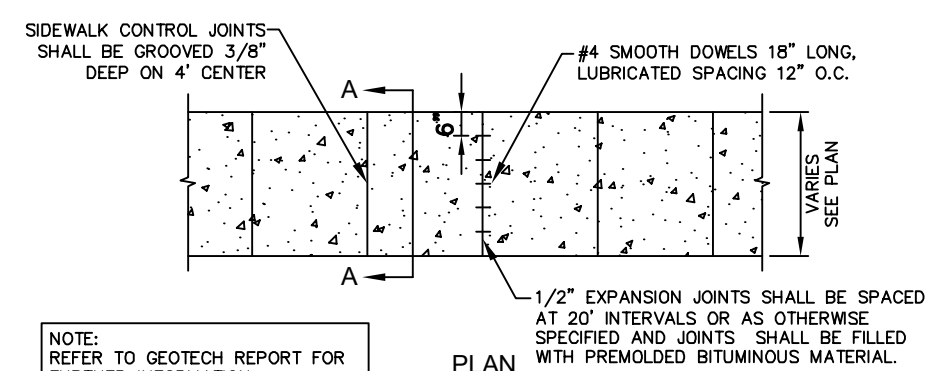


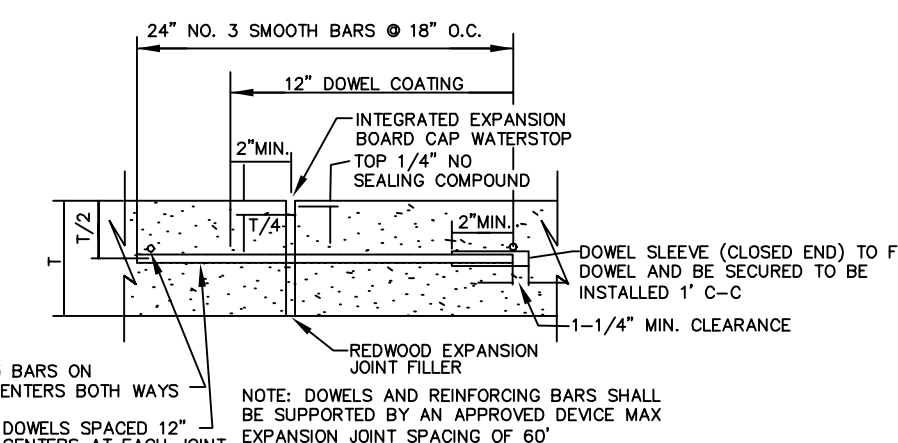
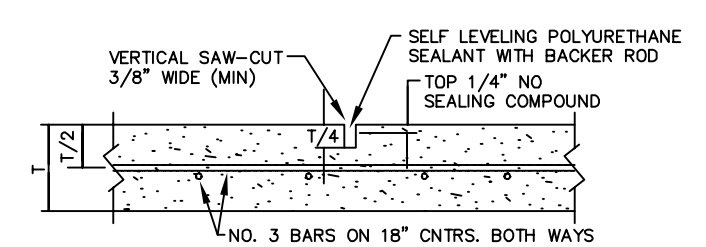
NOT FOR REGULATORY APPROVAL, PERMITTING, OR CONSTRUCTION



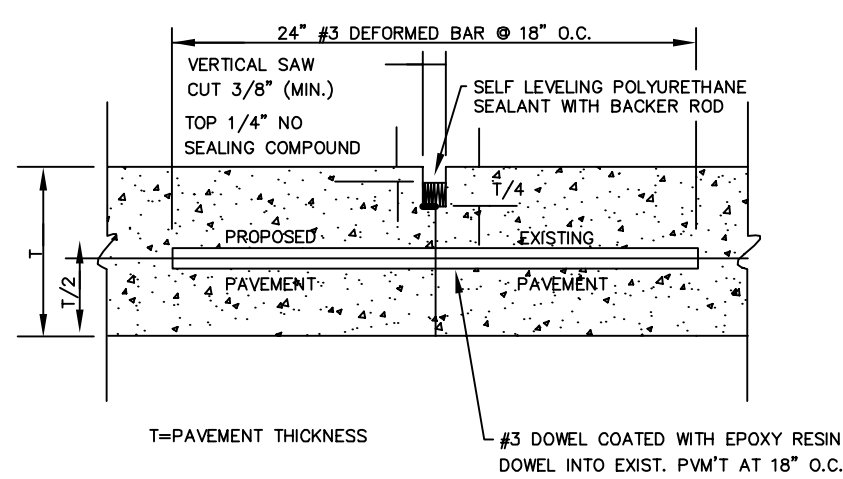
Revision Schedule		
Rev. #	Revision Description	Revision Date



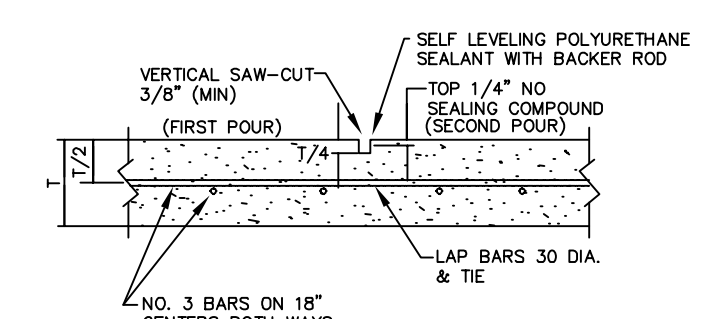
CONCRETE SIDEWALK DETAIL
N.T.S.



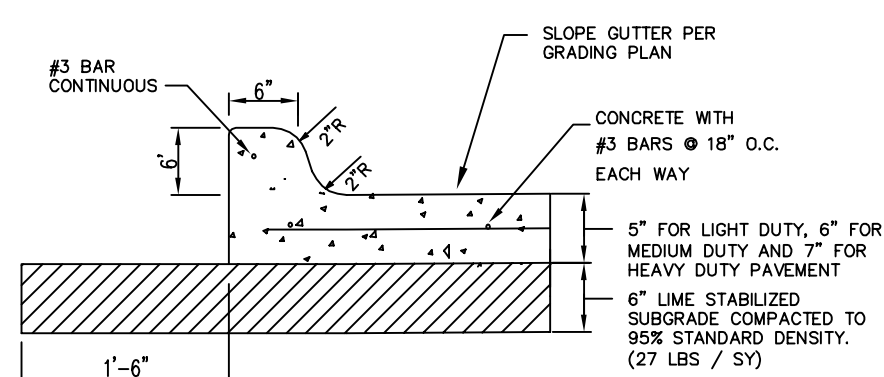
TRANSVERSE EXPANSION/ ISOLATION JOINT DETAIL
SCALE: NONE



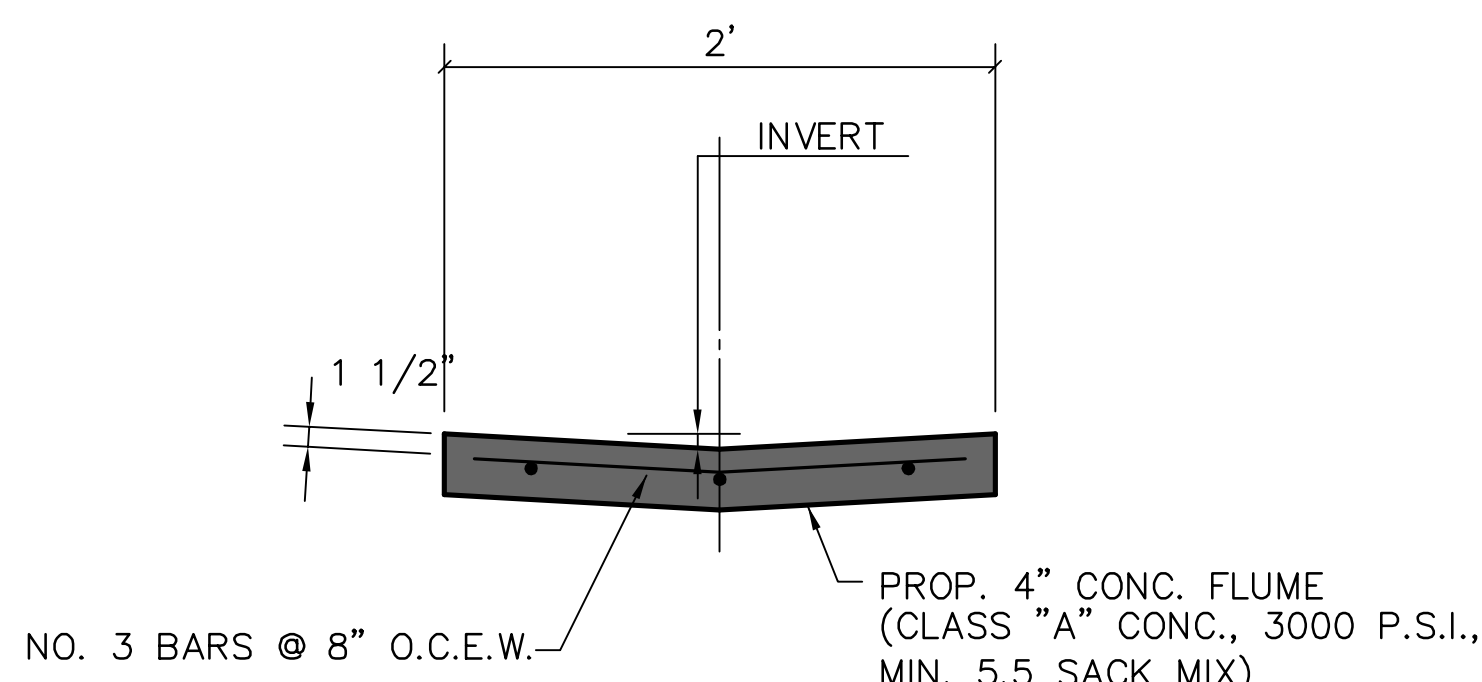
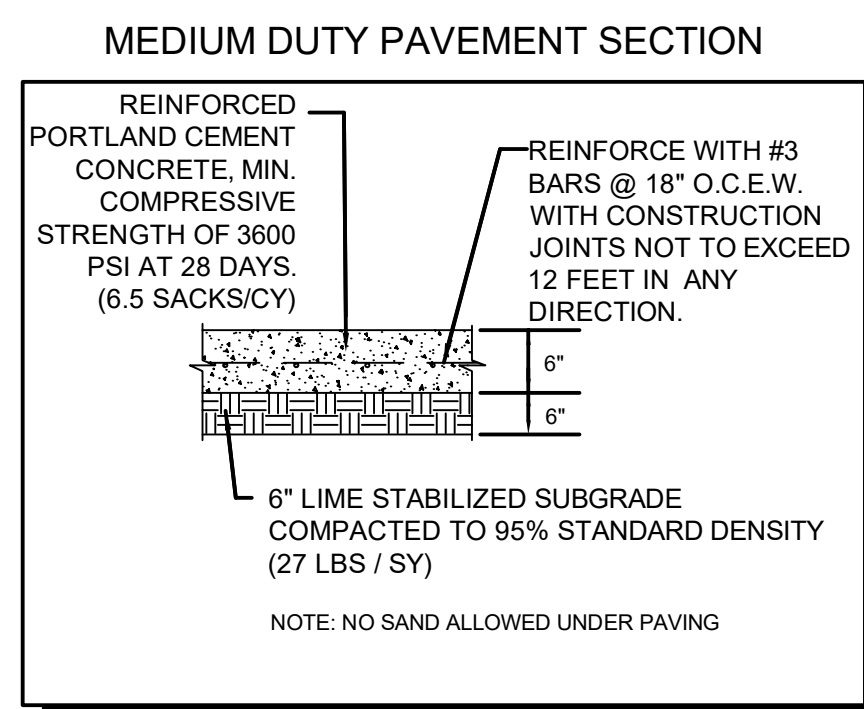
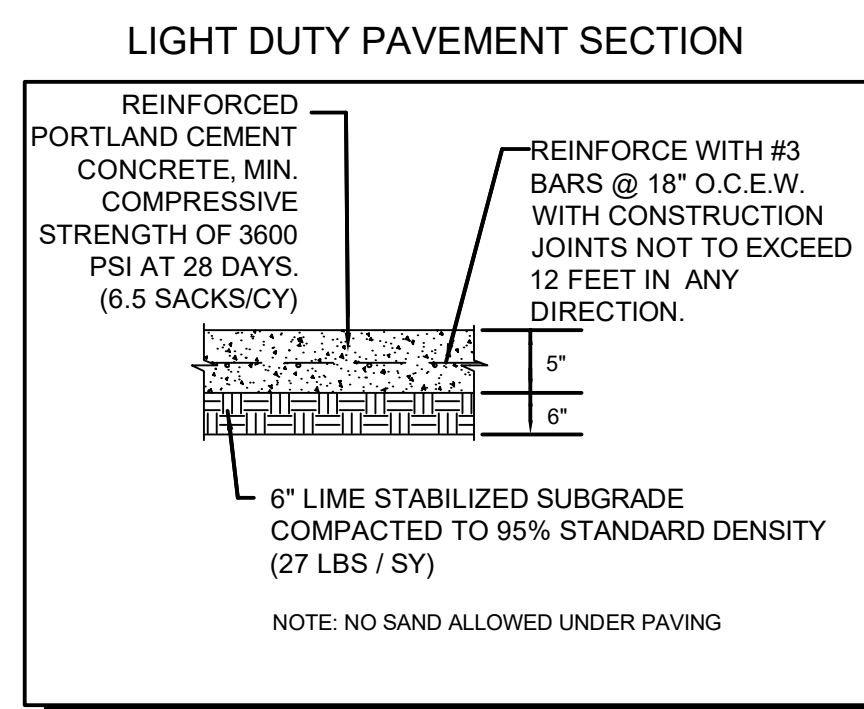
LONGITUDINAL BUTT JOINT DETAIL
SCALE: NONE



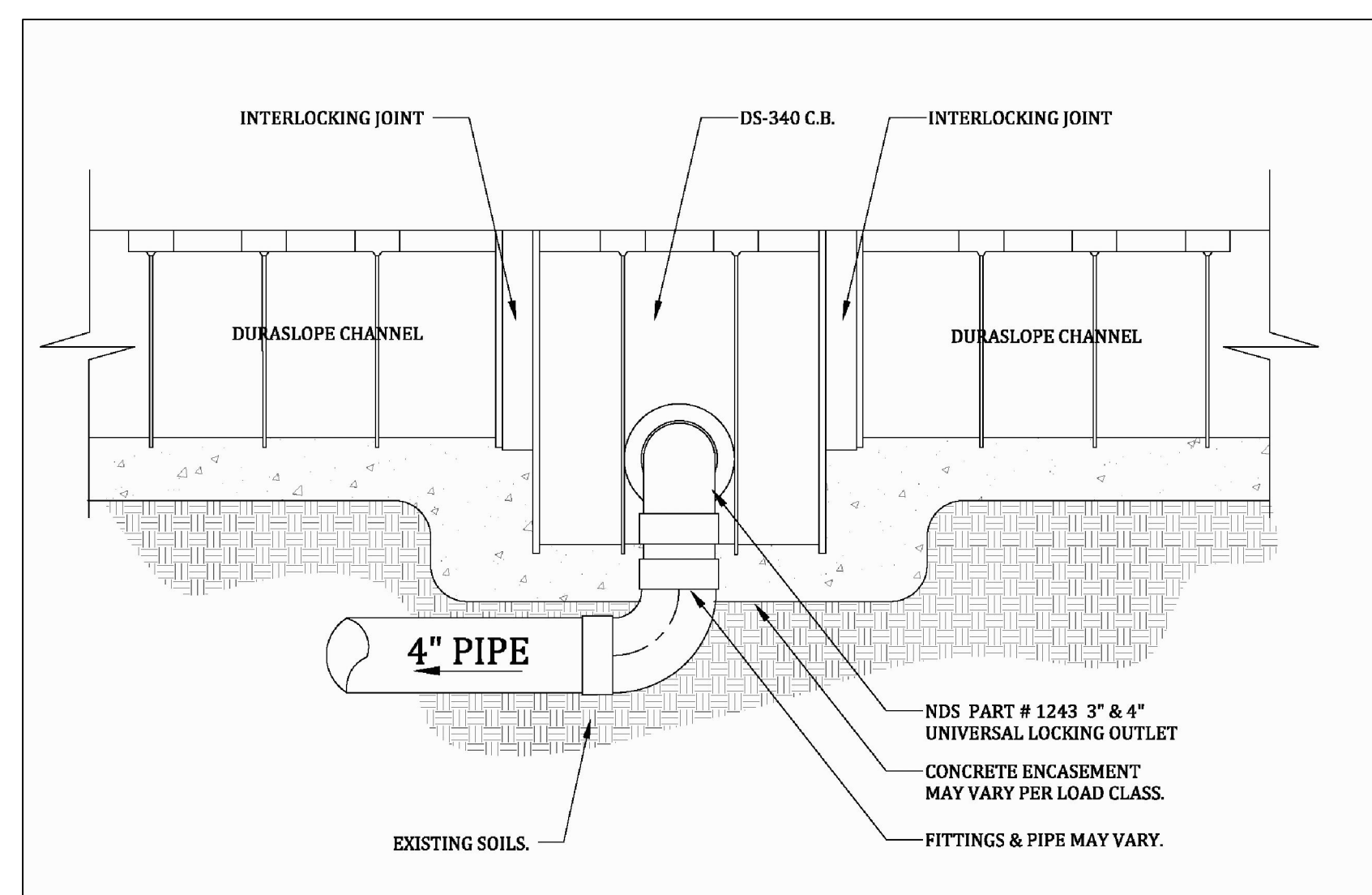
CONSTRUCTION JOINT DETAIL
SCALE: NONE



CONCRETE CURB AND GUTTER DETAIL
SCALE: NONE



CONCRETE PILOT CHANNEL



DS-340 4\"/>

RECORD DRAWING

TO THE BEST OF OUR KNOWLEDGE CARRILLO ENGINEERING, HEREBY STATES THAT THIS PLAN IS AS-BUILT. THE INFORMATION PROVIDED IS BASED ON SURVEYING AT THE SITE AND INFORMATION PROVIDED BY THE CONTRACTOR.

DATE: SEPTEMBER 27, 2021

TECHNICAL SPECIFICATION GUIDE

DURA SLOPE™ GRATES

NDS
WE PUT WATER IN ITS PLACE

Part No.	Description	Color	Ply. Qty.	Wt. Ea. (Lbs.)	Inflow Capacity (GPM)	Specifications
860	2" Channel Grate	White	12	2.92	27	
861	2" Channel Grate	Dark Gray	12	2.92	27	
8610	2" Channel Grate	Gray	12	2.92	27	NDS #650, #661, #662, #663, #664, #665, 2" Structural Foam Polyethylene secured channel grate with UV inhibitors, light traffic rated, best prod. ADA compliant. Open surface area of 7.72 square inches per foot, 27.00 GPM per foot.
862	2" Channel Grate	Green	12	2.92	27	
863	2" Channel Grate	Black	12	2.92	27	
864	2" Channel Grate	Steel	12	2.92	27	
865	2" Channel Grate	Brk Red	12	2.92	27	
D5-670	2" Plastic Perforated Channel Grate	Gray	12	3.0	11.3	NDS #D5-670, 2" Structural Foam Polyethylene, secured channel grate with UV inhibitors, light traffic rated, best prod. ADA compliant. Open surface area of 9.34 square inches per foot, 12.2 GPM per foot.
D5-226	2" Stainless Steel Perforated Channel Grate	Steel	12	3.22	9.6	NDS #D5-226, Stainless Steel grate, light traffic rated, best prod. ADA compliant. Open surface area of 7.72 square inches per foot, 10.4 GPM per foot.
D5-228	2" Galvanized Steel Perforated Channel Grate	Steel	12	3.22	9.6	
D5-231	2" Cast Iron Channel Grate	Black	1	15.00	22.6	#D5-231 2" Heavy Duty Cast Iron Channel Grate, NDS #D5-232, 2" Heavy Duty Ductile Iron Channel Grate. Open surface area of 15.27 square inches per foot, 20.00 GPM per foot, H-20 load rating.
D5-232	2" Ductile Iron Channel Grate	Black	1	16.00	22.6	
D5-223	2" Galvanized Steel Channel Grate	Steel	12	4.00	31.4	NDS #D5-223, 2" Galvanized Ribbed Steel Grate. Open surface area of 19.55 square inches per foot, 26.00 GPM per foot.

ADA Compliant
Use with Dura Slope Drains and Dura Slope Catch Basins

NDS
WE PUT WATER IN ITS PLACE

Page 8

SAND-OIL INTERCEPTOR SCHEDULE

MODEL NO.	CAPACITY (GAL)	FLOW RATE (GPM)	EMPTY LENGTH (FT)	WIDTH (IN)	HEIGHT (IN)	INLET (FL)	OUTLET (FL)
CMP-100	100	50	18	5.500	42"	42"	54"
CMP-150	150	75	15	5.438	42"	42"	60"
CMP-200	200	100	20	6.600	48"	48"	60"
CMP-250	250	125	25	7.500	48"	48"	72"
CMP-300	300	150	30	8.475	60"	60"	72"
CMP-400	400	200	40	9.150	60"	60"	84"

PLAN VIEW

ELEVATION

Specifications

CONCRETE: Class (A) concrete with design strength of 4000 PSI at 28 days. Limit to 1st monolithic construction at floor and first stage of walls with rebar placed to required depth. Rebar for H-20 Loading.

REINFORCEMENT: Grade 60 rebar. No. 4 steel rebar to conform to ASTM A615 on required centers or equal. Bar bending and placement shall conform to the latest ACI standards.

D.I. CASTINGS: Manhole frames, covers or grates are manufactured of ductile iron conforming to ASTM A536, A537U, A536, & A537U STD Standards. Manhole shall be nominal 24" diameter and be 15' high.

Engineering Data

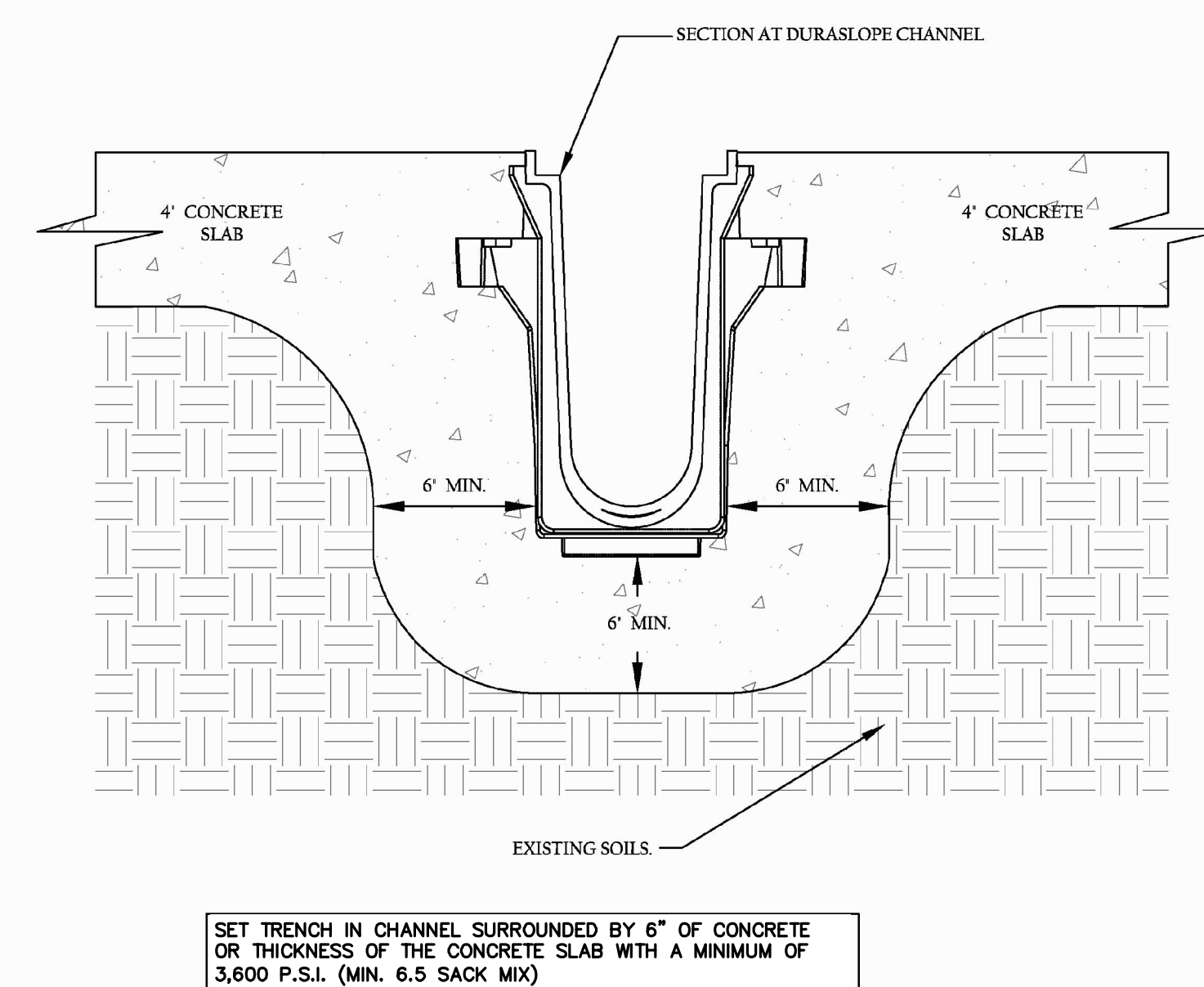
Interceptor is structurally and hydraulically engineered conforming to Uniform Plumbing Code. Nominal total liquid capacity and oil holding capacity as indicated. Recommended flow rates of 5 to 25 GPM (consult Park for proper sizing). Manufacturer shall submit performance calculations for all oil & water separation certified by a licensed professional engineer. Field excavation and preparation shall be completed prior to delivery of Interceptor. Use dimensional data as shown.

Oil Trooper

PARK
DESIGN FOR WATER

SAND-OIL SEPARATOR
MODEL CMP - 100 THRU 400 GALLONS

DATE: 06/16
REV: A



TYPICAL DURASLOPE INSTALLATION



Carrillo Engineering, LLC

301 Commerce Street, Ste 1410 - Fort Worth, Texas 76102
Phone 817-697-4996 - Firm Registration #F-15893

OWT ARCHITECTS

509 PECAN STREET
SUITE 100
FORT WORTH, TX 76102
817.993.9844

www.owtarchitects.com

ROCKWALL DFPS

ELLIS CENTRE #2 ADDITION
BOCK C, LOT 3A-R
1203 SIGMA CT,
ROCKWALL, TX 75087

3/1/2021

ISSUE DATE

CONSTRUCTION
DETAILS (PRIVATE)

C8.00