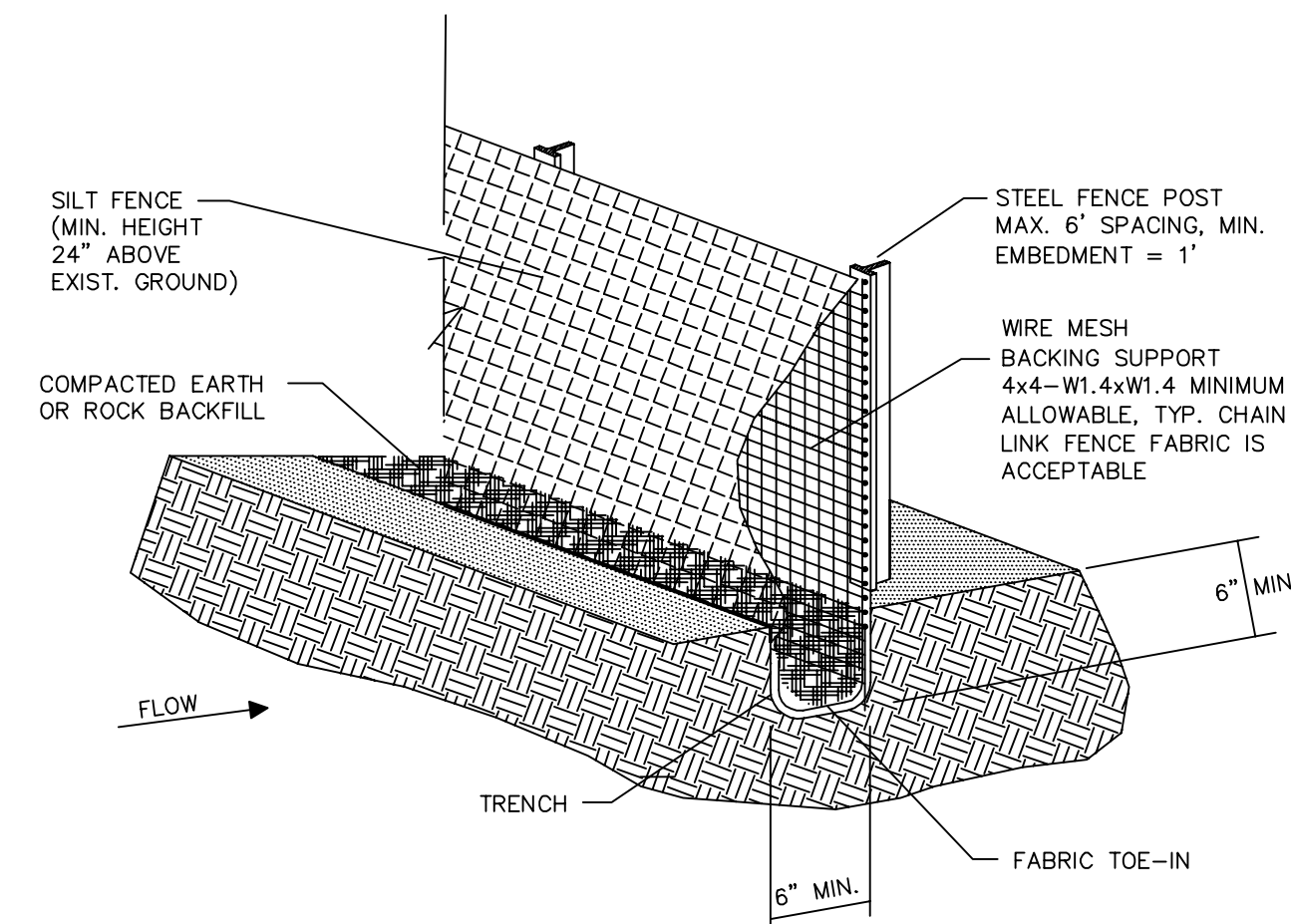


STANDARD EROSION CONTROL GENERAL NOTES

1. EROSION CONTROL DEVICES AS SHOWN ON THE EROSION CONTROL PLAN FOR THE PROJECT SHALL BE INSTALLED PRIOR TO THE START OF LAND DISTURBING ACTIVITIES ON THE PROJECT.
2. ALL EROSION CONTROL DEVICES ARE TO BE INSTALLED IN ACCORDANCE WITH THE APPROVED PLANS AND SPECIFICATIONS FOR THE PROJECT. CHANGES ARE TO BE APPROVED BEFORE CONSTRUCTION BY THE DESIGN ENGINEER AND THE CITY OF ROCKWALL.
3. IF THE EROSION CONTROL PLAN AS APPROVED CANNOT CONTROL EROSION AND OFF-SITE SEDIMENTATION FROM THE PROJECT THE EROSION CONTROL PLAN WILL BE REQUIRED TO BE REVISED AND/OR ADDITIONAL EROSION CONTROL DEVICES WILL BE REQUIRED ON SITE.
4. IF OFF-SITE BORROW OR SPOILS SITES ARE USED IN CONJUNCTION WITH THIS PROJECT, THIS INFORMATION SHALL BE DISCLOSED AND SHOWN ON THE EROSION CONTROL PLAN. OFF-SITE BORROW AND SPOILS AREAS ARE CONSIDERED PART OF EROSION CONTROL REQUIREMENTS. THESE AREAS SHALL BE STABILIZED WITH GROUND COVER PRIOR TO FINAL APPROVAL OF THE PROJECT.
5. INSPECTIONS SHALL BE MADE WEEKLY AND AFTER RAIN STORM EVENTS TO INSURE THAT THE DEVICES ARE FUNCTIONING PROPERLY. WHEN SEDIMENT OR MUD HAS CLOGGED THE VOID SPACES BETWEEN STONES OR MUD IS BEING TRACKED ONTO A PUBLIC ROADWAY THE AGGREGATE PAD MUST BE WASHED DOWN OR REPLACED. RUNOFF FROM THE WASH DOWN OPERATION SHALL NOT BE ALLOWED TO DRAIN DIRECTLY OFF SITE WITHOUT FIRST FLOWING THROUGH ANOTHER BMP TO CONTROL OFF SITE SEDIMENTATION. PERIODIC RE-GRADING OR THE ADDITION OF NEW STONE MAY BE REQUIRED TO MAINTAIN THE EFFICIENCY OF THE INSTALLATION.
6. CONTRACTOR SHALL HAVE A COPY THE SWPPP ON SITE AT ALL TIMES.
7. CONTRACTOR SHALL BE RESPONSIBLE FOR SUBMITTAL OF N.O.I., N.O.T. AND ANY ADDITIONAL INFORMATION REQUIRED BY THE E.P.A. CONTRACTOR SHALL COMPLY WITH ALL E.P.A. STORM WATER POLLUTION PREVENTION REQUIREMENTS.



SILT FENCE GENERAL NOTES

1. STEEL POSTS WHICH SUPPORT THE SILT FENCE SHALL BE INSTALLED ON A SLIGHT ANGLE TOWARD THE ANTICIPATED RUNOFF SOURCE. POST MUST BE EMBEDDED A MINIMUM OF ONE FOOT.
2. THE TOE OF THE SILT FENCE SHALL BE TRENCHED IN WITH A SPADE OR MECHANICAL TRENCHER, SO THAT THE DOWN SLOPE FACE OF THE TRENCH IS FLAT AND PERPENDICULAR TO THE LINE OF FLOW. WHERE FENCE CANNOT BE TRENCHED IN (e.g. PAVEMENT), WEIGHT FABRIC FLAP WITH ROCK ON UPHILL SIDE TO PREVENT FLOW FROM SEEPING UNDER FENCE.
3. THE TRENCH MUST BE A MINIMUM OF 6 INCHES DEEP AND 6 INCHES WIDE TO ALLOW FOR THE SILT FENCE FABRIC TO BE LAID IN THE GROUND AND BACKFILLED WITH COMPACTED MATERIAL.
4. SILT FENCE SHOULD BE SECURELY FASTENED TO EACH STEEL SUPPORT POST OR TO WOVEN WIRE, WHICH IN TURN IS ATTACHED TO THE STEEL FENCE POST. THERE SHALL BE A 3 FOOT OVERLAP, SECURELY FASTENED WHERE ENDS OF FABRIC MEET.
5. INSPECTION SHALL BE MADE EVERY WEEK AND AFTER EACH 1/2" RAINFALL. REPAIR OR REPLACEMENT SHALL BE MADE PROMPTLY AS NEEDED.
6. SILT FENCE SHALL BE REMOVED WHEN THE SITE IS COMPLETELY STABILIZED SO AS NOT TO BLOCK OR IMPEDE STORM FLOW OR DRAINAGE.
7. ACCUMULATED SILT SHALL BE REMOVED WHEN IT REACHES A DEPTH OF HALF THE HEIGHT OF THE FENCE. THE SILT SHALL BE DISPOSED OF AT AN APPROVED SITE AND IN SUCH A MANNER AS TO NOT CONTRIBUTE TO ADDITIONAL SILTATION.

CONSTRUCTION OF A SILT FENCE

N.T.S.

(SF)

CONSTRUCTION ENTRANCE NOTES:

1. STONE SIZE - 5 INCHES (MIN) CRUSHED ROCK. NO CRUSHED OR RECYCLED CONCRETE ALLOWED.
2. LENGTH - AS EFFECTIVE, BUT NOT LESS THAN 50 FEET.
3. THICKNESS - NOT LESS THAN 12 INCHES.
4. WIDTH - NOT LESS THAN FULL WIDTH OF ALL POINTS OF INGRESS OR EGRESS.
5. WASHING - WHEN NECESSARY, WHEELS SHALL BE CLEANED TO REMOVE SEDIMENT PRIOR TO ENTRANCE ONTO PUBLIC ROADWAY. WHEN WASHING IS REQUIRED, IT SHALL BE DONE ON AN AREA STABILIZED WITH CRUSHED STONE WHICH DRAINS INTO AN APPROVED TRAP OR SEDIMENT BASIN. ALL SEDIMENT SHALL BE PREVENTED FROM ENTERING ANY STORM DRAIN, DITCH OR WATERCOURSE USING APPROVED METHODS.
6. MAINTENANCE - THE ENTRANCE SHALL BE MAINTAINED IN CONDITION WHICH WILL PREVENT TRACKING OR FLOWING OF SEDIMENT ONTO PUBLIC ROADWAYS. THIS MAY REQUIRE PERIODIC OF ANY MEASURES USED TO TRAP SEDIMENT. ALL SEDIMENT SPILLED, DROPPED, WASHED OR TRACKED ONTO PUBLIC ROADWAY, MUST BE REMOVED IMMEDIATELY.
7. DRAINAGE - ENTRANCE MUST BE PROPERLY GRADED OR INCORPORATE A DRAINAGE SWALE TO PREVENT RUNOFF FROM LEAVING THE CONSTRUCTION SITE.
8. CONTRACTOR TO COORDINATE EXACT LOCATION OF THIS DETAIL. TOP DRESSING WITH ADDITIONAL STONE AS CONDITIONS DEMAND, AND REPAIR AND/OR CLEAN OUT

CONSTRUCTION ENTRANCE

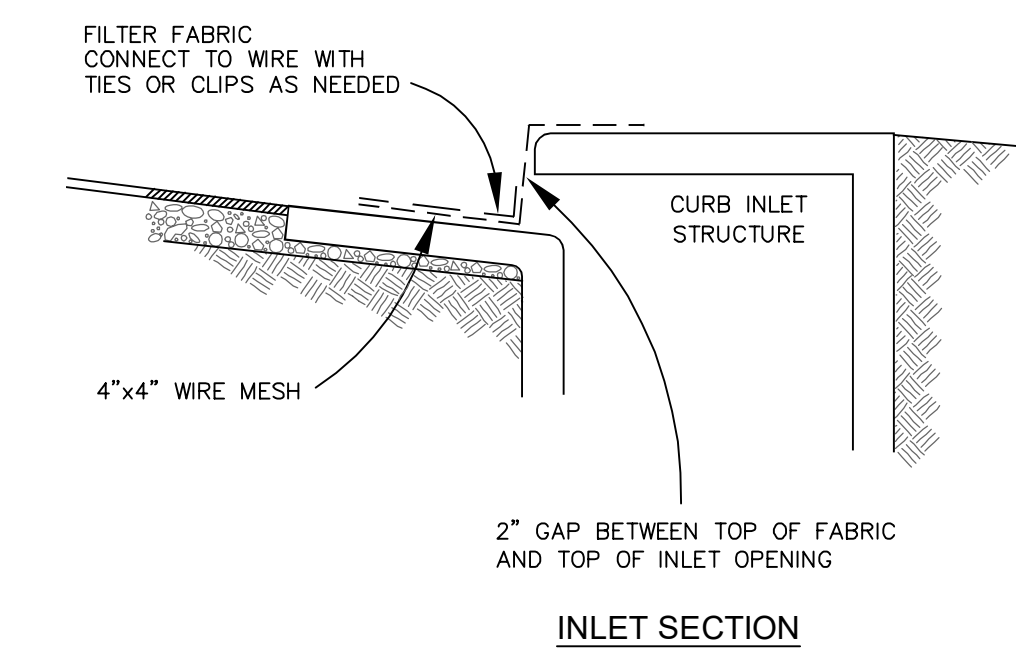
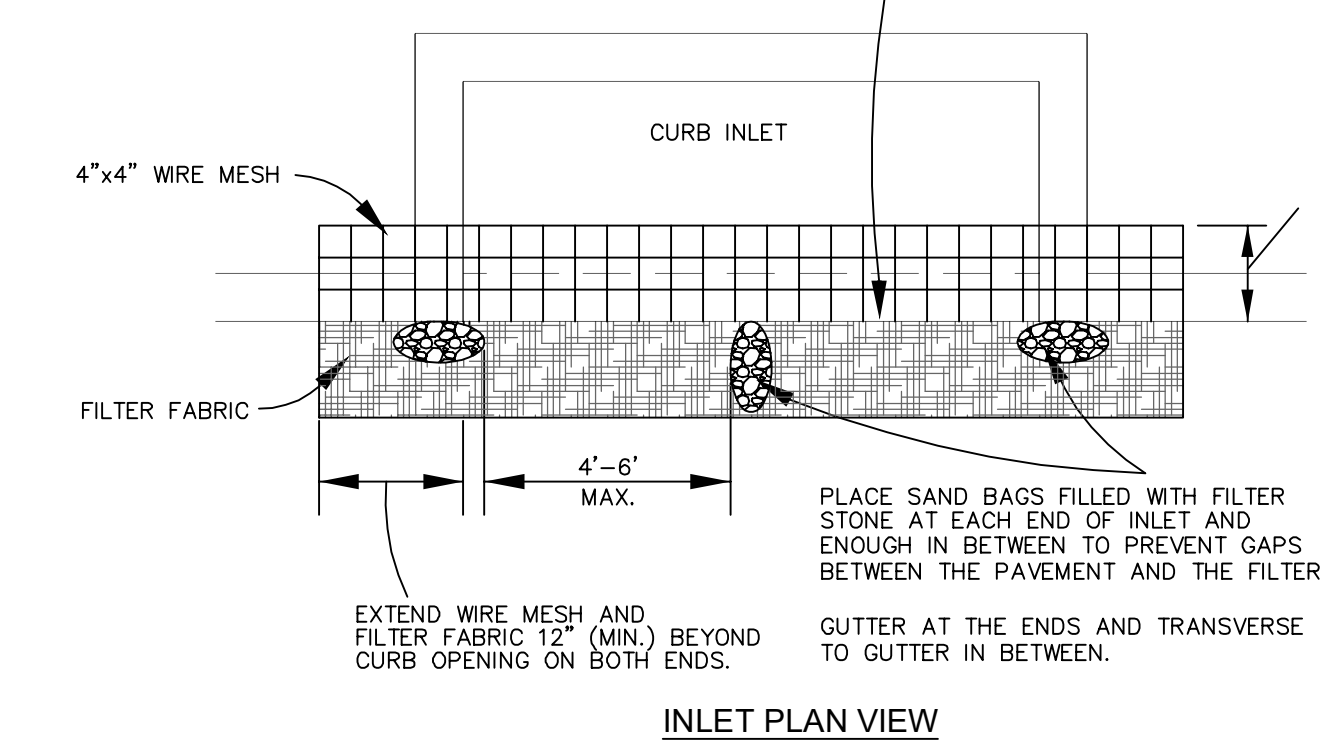
N.T.S.

(CE)

NOTE:

VERTICAL PANEL BARRICADES TO BE PLACED WHEN LOCATED ON AN ACTIVE STREET.

2" GAP BETWEEN TOP OF FABRIC AND TOP OF INLET OPENING SHALL EXTEND ACROSS THE FULL SPACE BETWEEN SANDBAGS.



TYPE C CURB INLET PROTECTION

INLET PROTECTOR DETAILS

N.T.S.

(IP2)

EROSION CONTROL SCHEDULE AND PHASING

THE PROJECT SHALL GENERALLY CONFORM TO THE FOLLOWING:

PHASE 1 - DEMOLITION/GRADING

- A. CONSTRUCT TEMPORARY CONSTRUCTION ENTRANCE, SILT FENCE, AND TREE PROTECTION FENCE ACCORDING TO THE APPROXIMATE LOCATION SHOWN ON GRADING AND EROSION CONTROL PLAN, NOTES, AND DETAIL SHEETS.
- B. BEGIN CLEARING AND GRADING OF SITE.
- C. SEED AND REVEGETATE SLOPES WHERE SHOWN.

PHASE 2 - UTILITIES

- A. KEEP ALL STORM WATER POLLUTION PREVENTION MEASURES IN PLACE.
- B. INSTALL STORM DRAINS AS SPECIFIED ON PLAN SHEETS.
- C. INSTALL INLET PROTECTION.

PHASE 3 - PAVING

- A. KEEP ALL STORM WATER POLLUTION PREVENTION MEASURES IN PLACE. REMOVE AS NEEDED TO PAVE.
- B. STABILIZE SUBGRADE.
- C. PAVE PARKING LOT AND SIDEWALKS AS SPECIFIED ON PLAN SHEETS.
- D. REMOVE TEMPORARY CONSTRUCTION ENTRANCE.

PHASE 4 - LANDSCAPING AND SOIL STABILIZATION

- A. REVEGETATE LOT AND PARKWAYS
- B. LANDSCAPE CONTRACTOR SHALL REVEGETATE ALL AREAS RESERVED FOR LANDSCAPE VEGETATIVE COVERS.
- C. REMOVE EROSION CONTROL DEVICES WHEN GROUND COVER ESTABLISHED.

B.M.P. MAINTENANCE SCHEDULE

TEMPORARY STONE CONSTRUCTION ENTRANCE/EXIT:

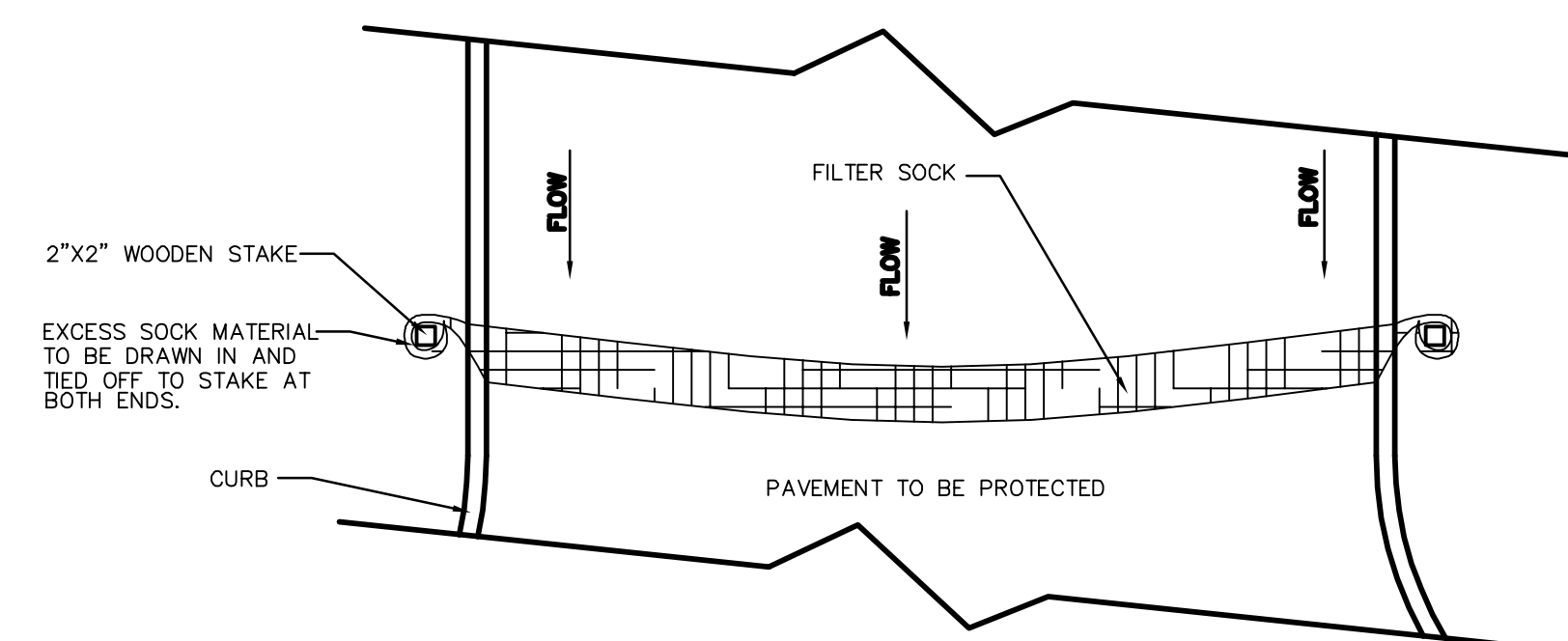
INSPECTIONS SHALL BE MADE WEEKLY AND AFTER RAIN STORM EVENTS TO ENSURE THAT THE FACILITY IS FUNCTIONING PROPERLY. AGGREGATE PAD SHALL BE WASHED DOWN OR REPLACED WHEN SEDIMENT OR MUD HAS CLOGGED THE VOID SPACES BETWEEN THE STONES OR MUD IS BEING TRACKED ONTO THE PUBLIC ROADWAY. RUNOFF FROM WASH DOWN OPERATION SHALL BE FILTERED THROUGH ANOTHER B.M.P. PRIOR TO DRAINING OFF-SITE.

SILT FENCE:

INSPECTIONS SHALL BE MADE WEEKLY AND AFTER RAIN STORM EVENTS. SEDIMENT SHALL BE REMOVED FROM BEHIND THE FENCE WHEN THE DEPTH OF SEDIMENT HAS BUILT UP TO ONE-THIRD THE HEIGHT OF THE FENCE ABOVE GRADE. FENCE SHALL BE INSPECTED FOR GAPS AT BASE. INSPECT SUPPORTING POSTS AND FILTER FABRIC. REPLACE IF REQUIRED.

INLET PROTECTION:

INSPECTIONS SHALL BE MADE WEEKLY AND AFTER RAIN STORM EVENTS TO ENSURE THAT THE DEVICE IS FUNCTIONING PROPERLY. SEDIMENT SHALL BE REMOVED FROM THE STORAGE AREA WHEN SEDIMENT DEPTH HAS BUILT UP TO ONE-HALF THE DESIGN DEPTH. IF DE-WATERING OF THE STORAGE VOLUME IS NOT OCCURRING, CLEAN OR REPLACE THE FILTER STONE SURROUNDING THE INLET. CLEAN THE STONE SURFACE THE FIRST FEW TIMES BY RAKING. REPEATED SEDIMENT BUILD-UP WILL REQUIRE FILTER STONE REPLACEMENT.



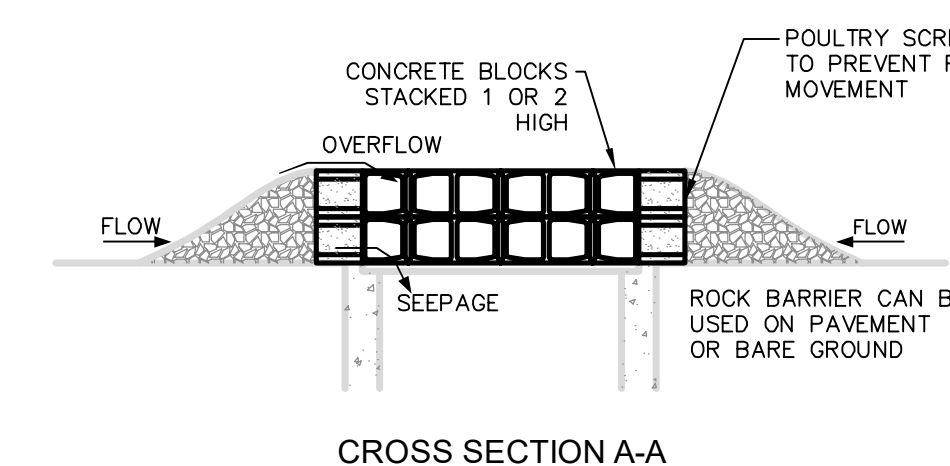
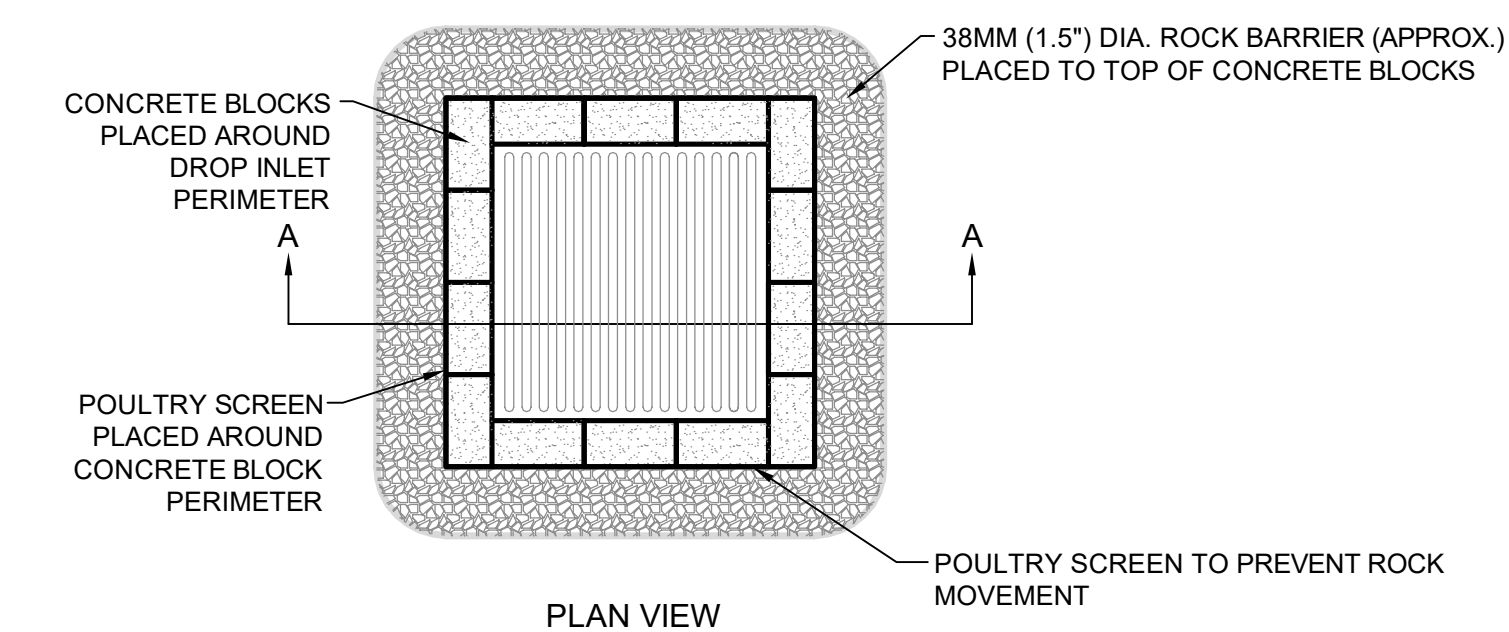
FILTER SOCK GENERAL NOTES

1. ALL MATERIAL TO MEET MANUFACTURER SPECIFICATIONS
2. FILTER SOCK TO BE FILTREXX INLET SOXX OR APPROVED EQUAL
3. INSPECTION SHALL BE MADE EVERY TWO WEEKS AND AFTER EACH 1/2" RAINFALL. REPAIR OR REPLACEMENT SHALL BE MADE PROMPTLY AS NEEDED.
4. FILTER SOCK SHALL BE REMOVED WHEN THE SITE IS COMPLETELY STABILIZED SO AS NOT TO BLOCK OR IMPEDE STORM FLOW OR DRAINAGE.
5. ACCUMULATED SILT SHALL BE REMOVED WHEN IT REACHES A DEPTH OF HALF THE HEIGHT OF THE SOCK. THE SILT SHALL BE DISPOSED OF AT AN APPROVED SITE AND IN SUCH A MANNER AS TO NOT CONTRIBUTE TO ADDITIONAL SILTATION.
6. COMPOST MATERIAL TO BE DISPERSED ON SITE, AS DETERMINED BY ENGINEER.

FILTER SOCK INSTALLATION

N.T.S.

(FS)



GRATE INLET PROTECTION DETAIL

N.T.S.

(IP1)

RECORD DRAWING

TO THE BEST OF OUR KNOWLEDGE CARRILLO ENGINEERING, HEREBY STATES THAT THIS PLAN IS AS-BUILT. THE INFORMATION PROVIDED IS BASED ON SURVEYING AT THE SITE AND INFORMATION PROVIDED BY THE CONTRACTOR.

DATE: SEPTEMBER 27, 2021

NOT FOR REGULATORY APPROVAL, PERMITTING, OR CONSTRUCTION



Revision Schedule

Rev. #	Revision Description	Revision Date

NOTE:

ALL RESPONSIBILITY FOR ADEQUACY OF DESIGN REMAINS WITH THE DESIGN ENGINEER. THE CITY OF ROCKWALL, IN REVIEWING AND RELEASING PLANS FOR CONSTRUCTION, ASSUMES NO RESPONSIBILITY FOR ADEQUACY OR ACCURACY OF DESIGN.



Carrillo Engineering, LLC

301 Commerce Street, Ste 1410 - Fort Worth, Texas 76102
Phone 817-697-4996 - Firm Registration #F-15893

OWT ARCHITECTS

509 PECAN STREET
SUITE 100
FORT WORTH, TX 76102
817.993.9844

www.owtarchitects.com

ROCKWALL DFPS

ELLIS CENTRE #2 ADDITION
BOCK C, LOT 3A-R
1203 SIGMA CT,
ROCKWALL, TX 75087

3/1/2021

ISSUE DATE

EROSION CONTROL DETAILS

C7.01