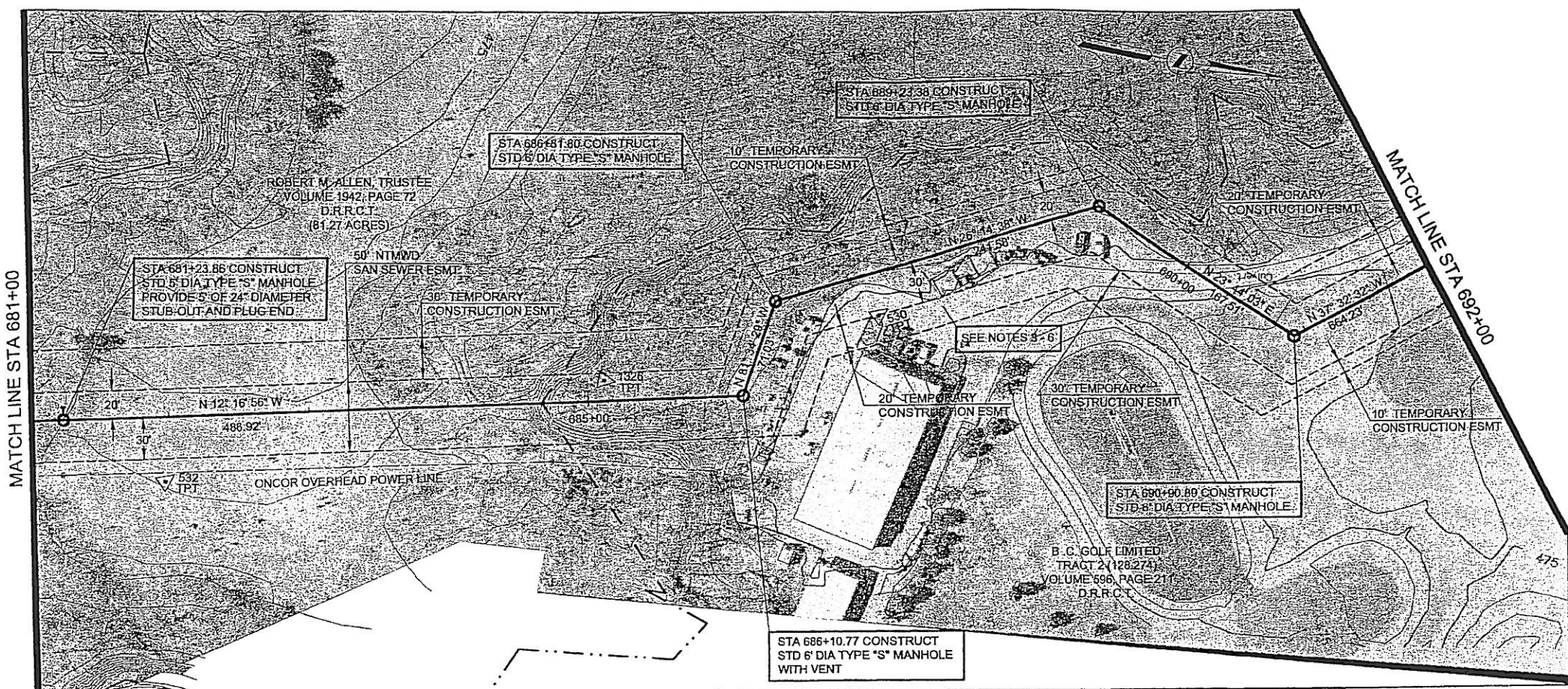
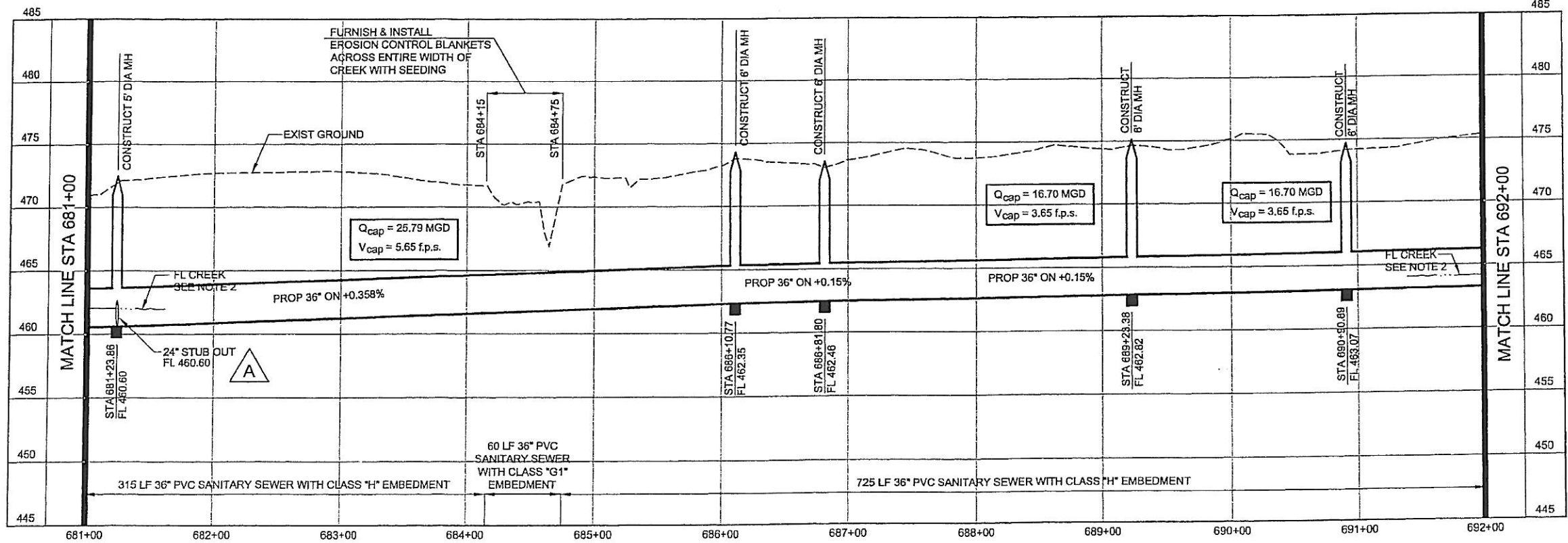


HORIZONTAL CONTROL DATA			
COORDINATES			
MH STATION	NORTH	EAST	DELTA
681+23.86	7003870.01	2595569.31	00° 21' 45" LT
686+10.77	7004345.77	2595465.73	69° 17' 33" LT
686+81.80	7004356.18	2595395.47	55° 19' 52" RT
689+23.38	7004572.86	2595288.65	49° 58' 41" RT
690+90.89	7004726.20	2595366.07	61° 16' 35" LT

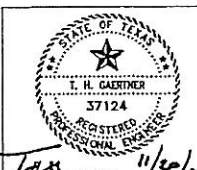
SURVEY CONTROL			
COORDINATES			
POINT NO	NORTH	EAST	ELEVATION
530	7004431.23	2595392.43	475.41
532	7003950.93	2595599.14	472.04
1326	7004245.25	2595472.46	472.26



- NOTES:**
- SEE SHEET NO. 2 FOR GENERAL PROJECT NOTES.
  - FLOW LINE AT BUFFALO CREEK SHOWN FOR REFERENCE ONLY.
  - ACCESS TO THE GOLF COURSE MAINTENANCE BUILDING SHALL BE MAINTAINED DURING CONSTRUCTION. EXISTING PAVING, DRIVES AND CART PATHS DAMAGED OR REMOVED BY THE CONSTRUCTION SHALL BE RESTORED TO EQUAL OR BETTER THAN THEIR PRE-CONSTRUCTION CONDITION.
  - CONTRACTOR SHALL INSTALL EROSION CONTROL SILT FENCING ON BOTH SIDES OF THE EASEMENT ACROSS THE GOLF COURSE PRIOR TO STARTING CONSTRUCTION ACTIVITIES.
  - CONTRACTOR MAY ONLY CONSTRUCT THE PROPOSED SANITARY SEWER FACILITIES ON B.C. GOLF LIMITED PROPERTY DURING THE MONTHS OF JANUARY AND FEBRUARY. ALL CONSTRUCTION AND RESTORATION ACTIVITY FOR THE WHOLE LENGTH OF THE PROPOSED SEWER THROUGH THE GOLF COURSE PROPERTY MUST BE STARTED AND TOTALLY COMPLETED IN THAT SINGLE TWO MONTH TIME FRAME.
  - THE CONTRACTOR SHALL REPLACE ALL GRASS DISTURBED BY THE CONSTRUCTION ON B.C. GOLF LIMITED PROPERTY WITH GRASS SOD APPROVED BY B.C. GOLF LIMITED.



**NORTH TEXAS MUNICIPAL WATER DISTRICT**  
**ROCKWALL-HEATH TRANSFER SEWER RHCf 01-1, SECTION 2**  
**SANITARY SEWER PLAN AND PROFILE 681+00 TO 692+00**



NO	DATE	REVISIONS	MADE	CKD	JOB NO.	DWG. NO.
A	11/6/03	Added 24" diameter stubout in profile for MH at Sta 681+23.86.	THG	THG		

**KBR**  
 Kellogg Brown & Root, Inc.  
 Engineered by KBR Technical Services, Inc.

DESIGNED KBR HORIZ. SCALE 1"=50'  
 DRAWN KBR VERT. SCALE 1"=5'  
 CHECKED THG DATE SEPTEMBER 26, 2003

CM-0148 DWG. NO. 21 OF 36