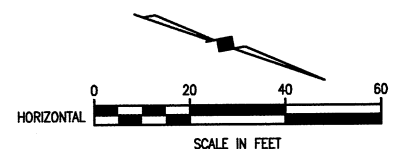
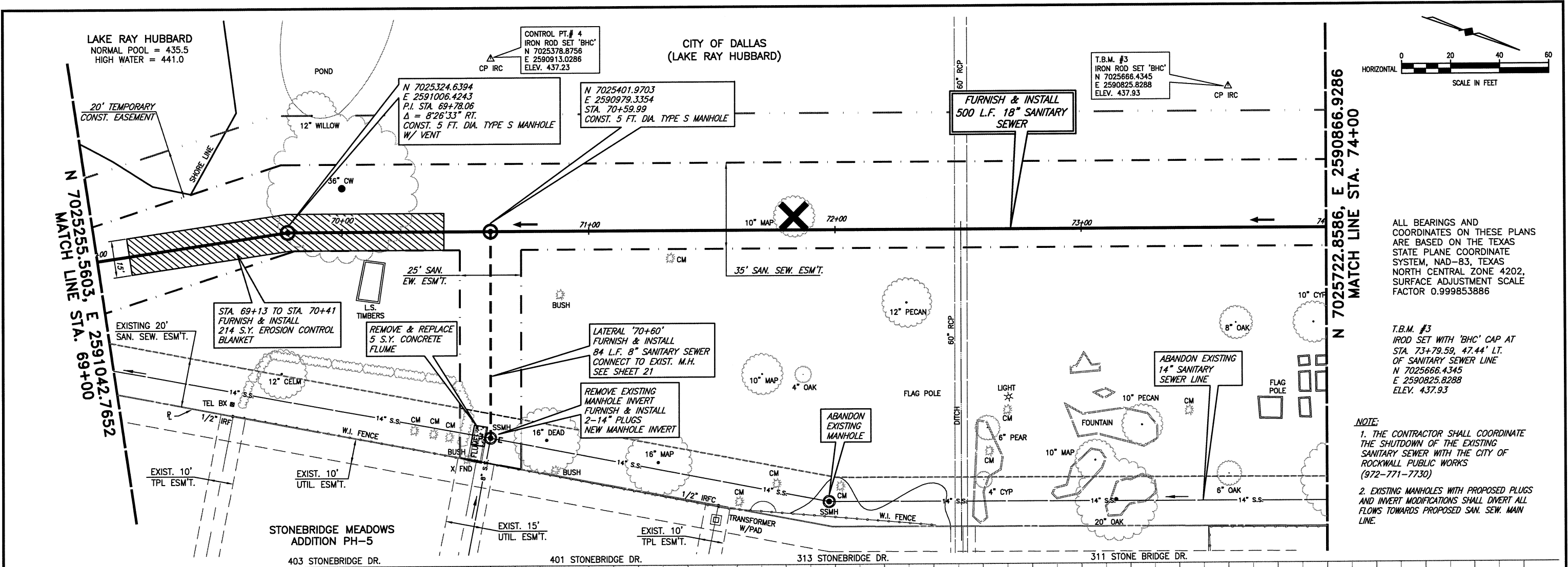


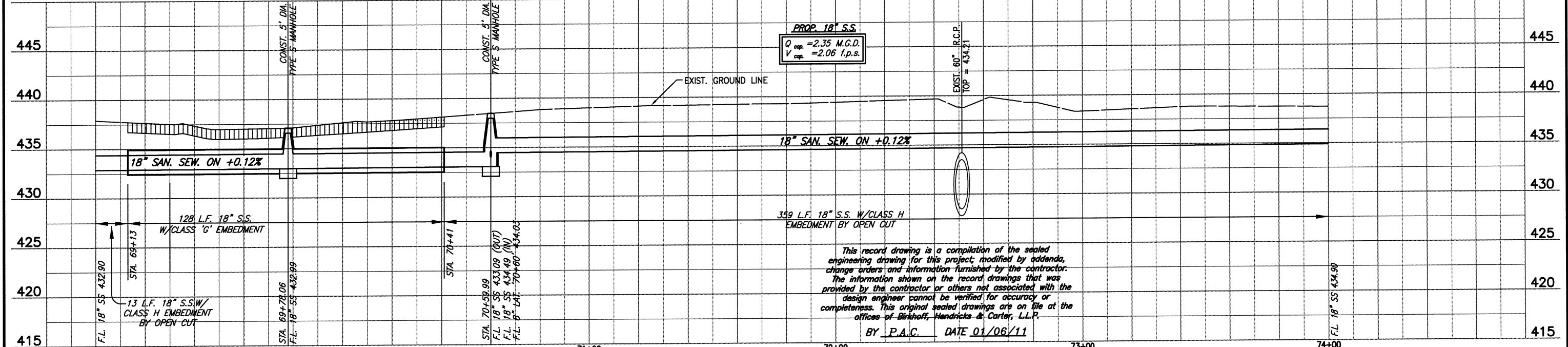
These plans and related specifications were prepared for construction of this specific project only. Reuse of these documents is not permitted without written authorization of Birkhoff, Hendricks, & Carter, L.L.P.



ALL BEARINGS AND COORDINATES ON THESE PLANS ARE BASED ON THE TEXAS STATE PLANE COORDINATE SYSTEM, NAD-83, TEXAS NORTH CENTRAL ZONE 4202, SURFACE ADJUSTMENT SCALE FACTOR 0.999853886

T.B.M. #3  
 IRON ROD SET WITH 'BHC' CAP AT STA. 73+79.59, 47.44' LT. OF SANITARY SEWER LINE N 7025666.4345 E 2590825.8288 ELEV. 437.93

**NOTE:**  
 1. THE CONTRACTOR SHALL COORDINATE THE SHUTDOWN OF THE EXISTING SANITARY SEWER WITH THE CITY OF ROCKWALL PUBLIC WORKS (972-771-7730)  
 2. EXISTING MANHOLES WITH PROPOSED PLUGS AND INVERT MODIFICATIONS SHALL DIVERT ALL FLOWS TOWARDS PROPOSED SAN. SEW. MAIN LINE.



This record drawing is a compilation of the sealed engineering drawing for this project; modified by addenda, change orders and information furnished by the contractor. The information shown on the record drawings that was provided by the contractor or others not associated with the design engineer cannot be verified for accuracy or completeness. This original sealed drawings are on file at the offices of Birkhoff, Hendricks & Carter, L.L.P.

BY P.A.C. DATE 01/06/11

FIELD CHANGE NO.2 2/12/09 - REVISED TREE REMOVAL LOCATIONS
CHANGE ORDER NO.1 2/12/09 - REVISED BORE LOCATIONS & ENCASEMENT
FIELD CHANGE NO.4 6/29/09 - REVISED VERTICAL ALIGNMENT

**BIRKHOFF, HENDRICKS & CARTER, L.L.P.**  
 PROFESSIONAL ENGINEERS  
 Texas Firm F526  
 11910 Greenville Ave., Suite 600  
 Dallas, Texas (214) 361-7900

**NORTH TEXAS MUNICIPAL WATER DISTRICT**  
 LAKESIDE INTERCEPTOR REPLACEMENT  
 PLAN AND PROFILE  
 STA. 69+00 TO STA. 74+00

BHC PROJECT NO. 2007-104	SHEET NO. 18
June, 2009	