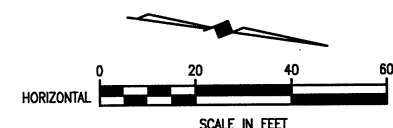
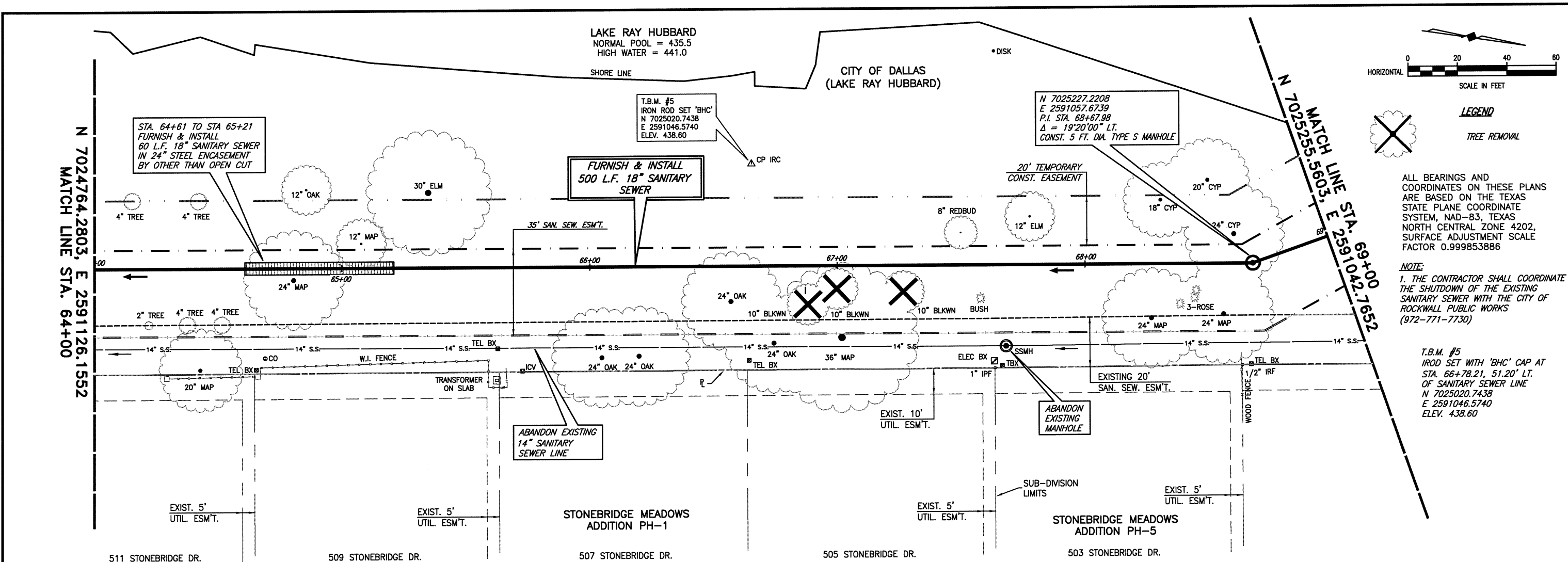


These plans and related specifications were prepared for construction of this specific project only. Reuse of these documents is not permitted without written authorization of Birkhoff, Hendricks, & Carter, L.L.P.

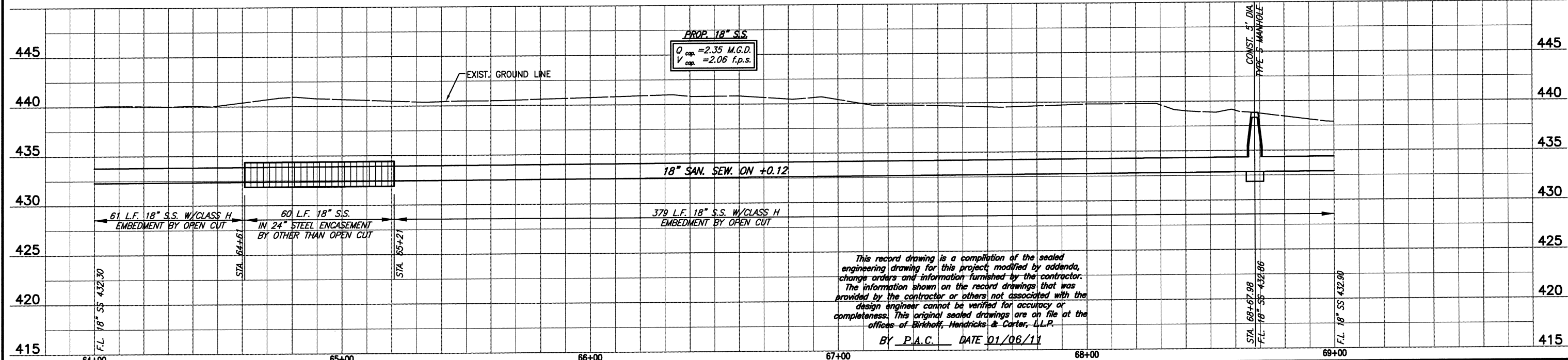


**LEGEND**  
 TREE REMOVAL

ALL BEARINGS AND COORDINATES ON THESE PLANS ARE BASED ON THE TEXAS STATE PLANE COORDINATE SYSTEM, NAD-83, TEXAS NORTH CENTRAL ZONE 4202, SURFACE ADJUSTMENT SCALE FACTOR 0.999853886

**NOTE:**  
 1. THE CONTRACTOR SHALL COORDINATE THE SHUTDOWN OF THE EXISTING SANITARY SEWER WITH THE CITY OF ROCKWALL PUBLIC WORKS (972-771-7730)

T.B.M. #5  
 IRON ROD SET WITH 'BHC' CAP AT STA. 66+78.21, 51.20' LT. OF SANITARY SEWER LINE N 7025020.7438 E 2591046.5740 ELEV. 438.60



This record drawing is a compilation of the sealed engineering drawing for this project, modified by addenda, change orders and information furnished by the contractor. The information shown on the record drawings that was provided by the contractor or others not associated with the design engineer cannot be verified for accuracy or completeness. This original sealed drawings are on file at the offices of Birkhoff, Hendricks & Carter, L.L.P.  
 BY P.A.C. DATE 01/06/11

CHANGE ORDER NO.1 2/12/09 - REVISED BORE LOCATIONS & ENCASEMENT
FIELD CHANGE NO.4 6/29/09 - REVISED VERTICAL ALIGNMENT

**BIRKHOFF, HENDRICKS & CARTER, L.L.P.**  
 PROFESSIONAL ENGINEERS  
 Texas Firm F526  
 11910 Greenville Ave., Suite 600  
 Dallas, Texas (214) 361-7900

**NORTH TEXAS MUNICIPAL WATER DISTRICT**  
 LAKESIDE INTERCEPTOR REPLACEMENT

**PLAN AND PROFILE**  
 STA. 64+00 TO STA. 69+00

BHC PROJECT NO. 2007-104  
 June, 2009

SHEET NO. **17**