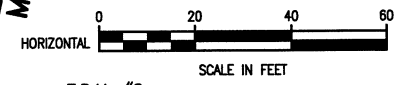
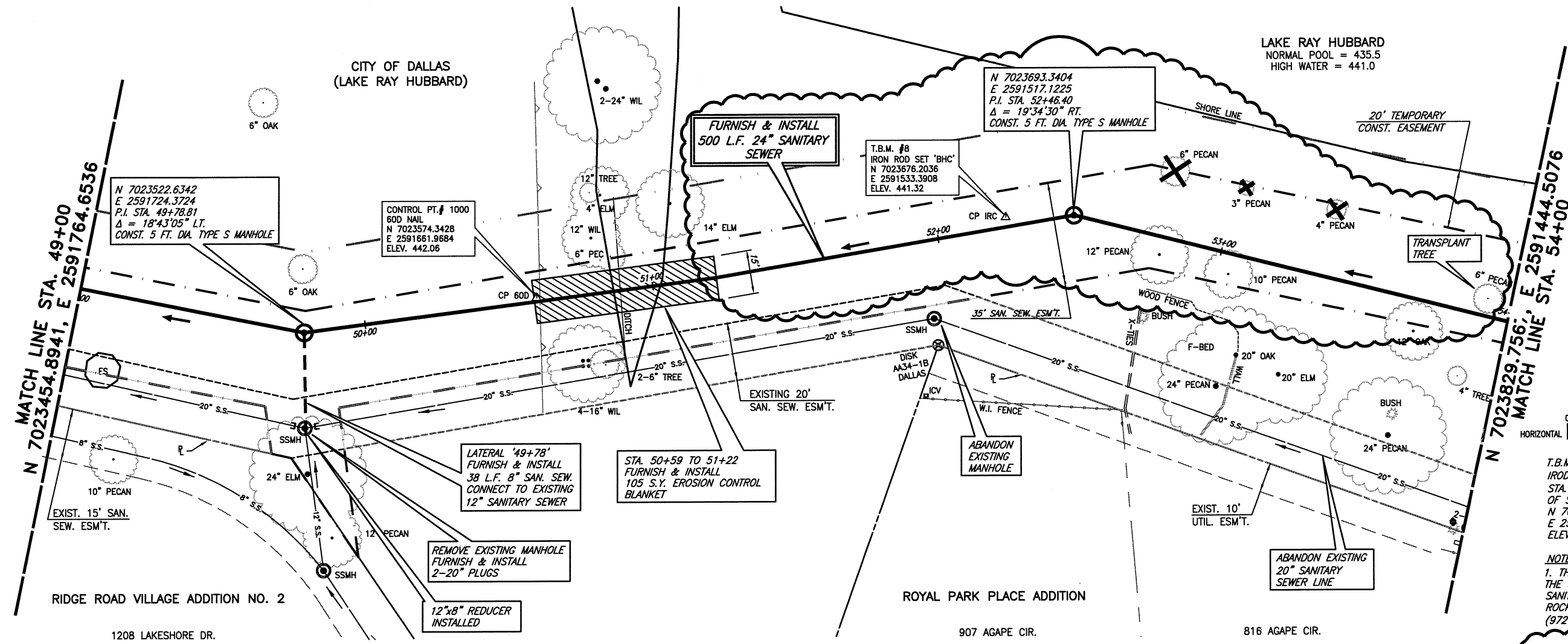


**LEGEND**



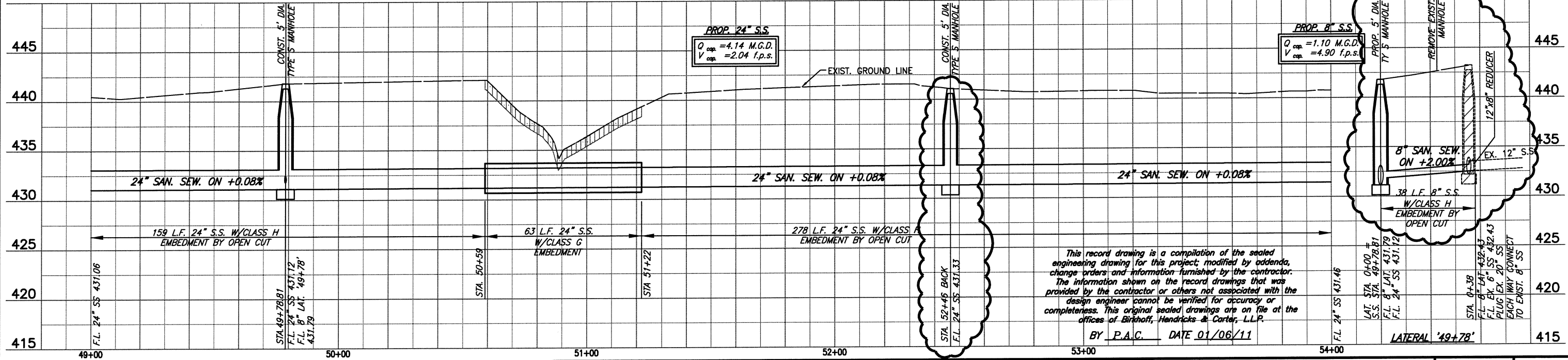
ALL BEARINGS AND COORDINATES ON THESE PLANS ARE BASED ON THE TEXAS STATE PLANE COORDINATE SYSTEM, NAD-83, TEXAS NORTH CENTRAL ZONE 4202, SURFACE ADJUSTMENT SCALE FACTOR 0.999853886

LAKE RAY HUBBARD  
NORMAL POOL = 435.5  
HIGH WATER = 441.0



T.B.M. #8  
IRON ROD SET WITH 'BHC' CAP AT STA. 52+31.59, 8.30' LT. OF SANITARY SEWER LINE  
N 7023676.2036  
E 2591533.3908  
ELEV. 441.32

NOTE:  
1. THE CONTRACTOR SHALL COORDINATE THE SHUTDOWN OF THE EXISTING SANITARY SEWER WITH THE CITY OF ROCKWALL PUBLIC WORKS (972-771-7730)



This record drawing is a compilation of the sealed engineering drawing for this project, modified by addenda, change orders and information furnished by the contractor. The information shown on the record drawings that was provided by the contractor or others not associated with the design engineer cannot be verified for accuracy or completeness. This original sealed drawings are on file at the offices of Birkhoff, Hendricks & Carter, L.L.P.

BY P.A.C. DATE 01/06/11

FIELD CHANGE NO.2 2/12/09 - REVISED TREE REMOVAL LOCATIONS
FIELD CHANGE NO.4 6/29/09 - REVISED VERTICAL ALIGNMENT

**BIRKHOFF, HENDRICKS & CARTER, L.L.P.**  
 PROFESSIONAL ENGINEERS  
 Texas Firm F526  
 11910 Greenville Ave., Suite 600  
 Dallas, Texas (214) 361-7900

PAUL A. CARLINE  
85400  
LICENSED PROFESSIONAL ENGINEER

**NORTH TEXAS MUNICIPAL WATER DISTRICT**  
 LAKESIDE INTERCEPTOR REPLACEMENT

PLAN AND PROFILE  
 STA. 49+00 TO STA. 54+00

BHC PROJECT NO. 2007-104  
 June, 2009

SHEET NO. 14