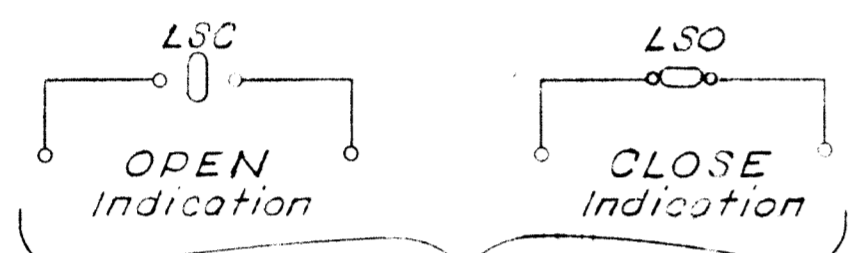
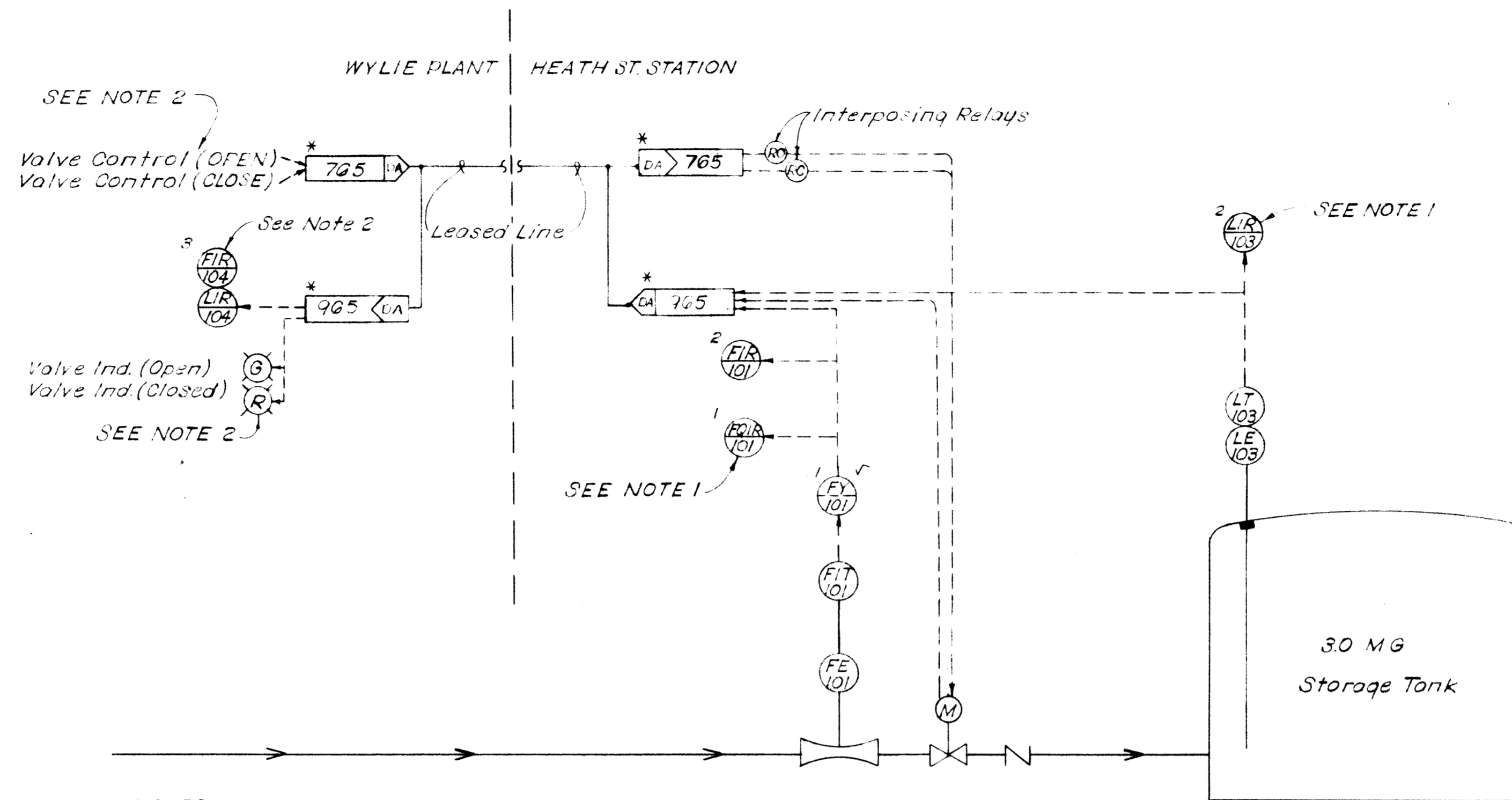


NOTE: Valve Shown In Closed Position



To Scanner Transmitter  
At NTMWD Control Building  
For Valve Position Indication

**VALVE CONTROL SCHEMATIC**

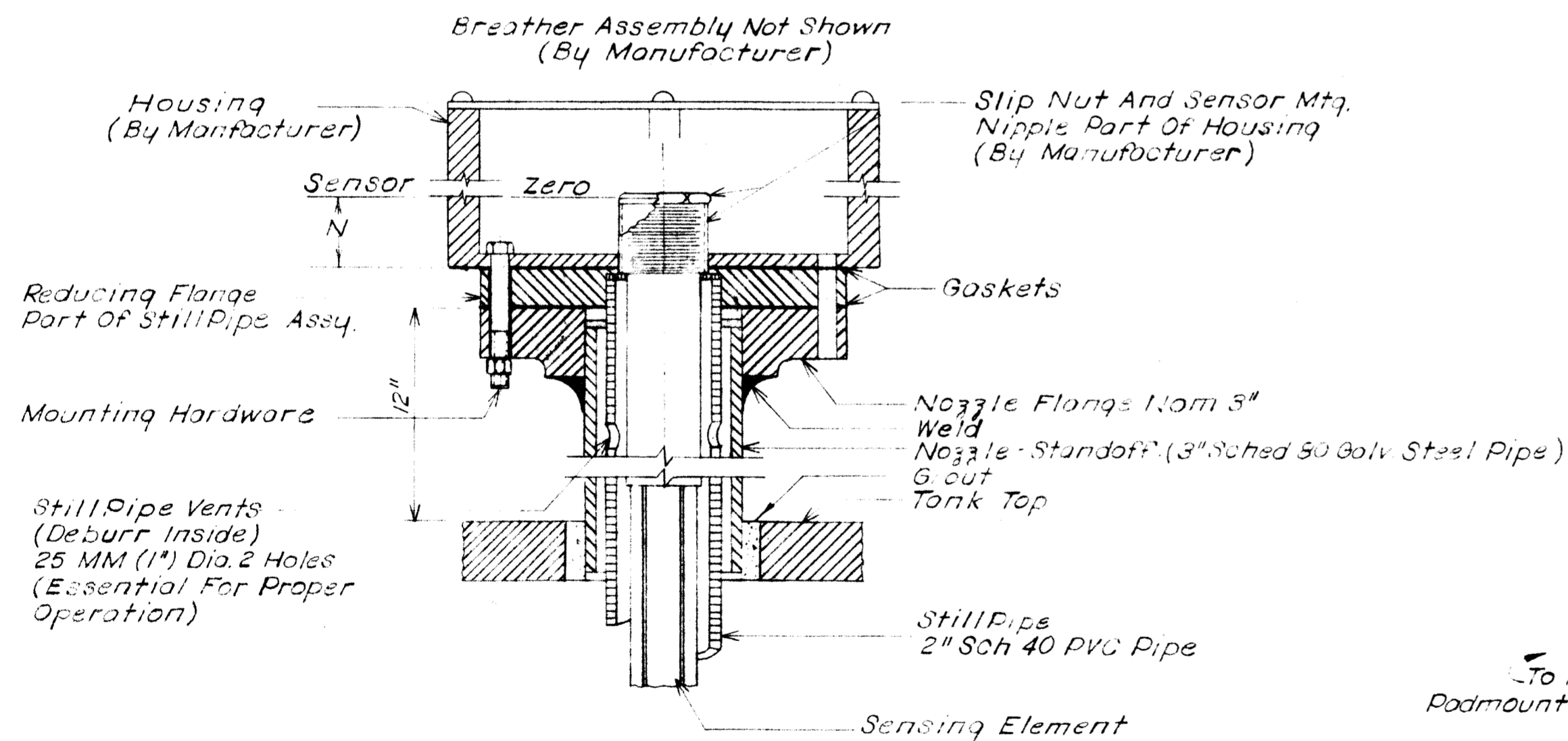


- NOTES:
1. Use This Instrument To Initiate Instrument Loop Power
  2. These Items Shall Be Furnished To The N.T.M.W.D. For Their Installation.

**PROCESS AND INSTRUMENTATION DIAGRAM**

**LEGEND**

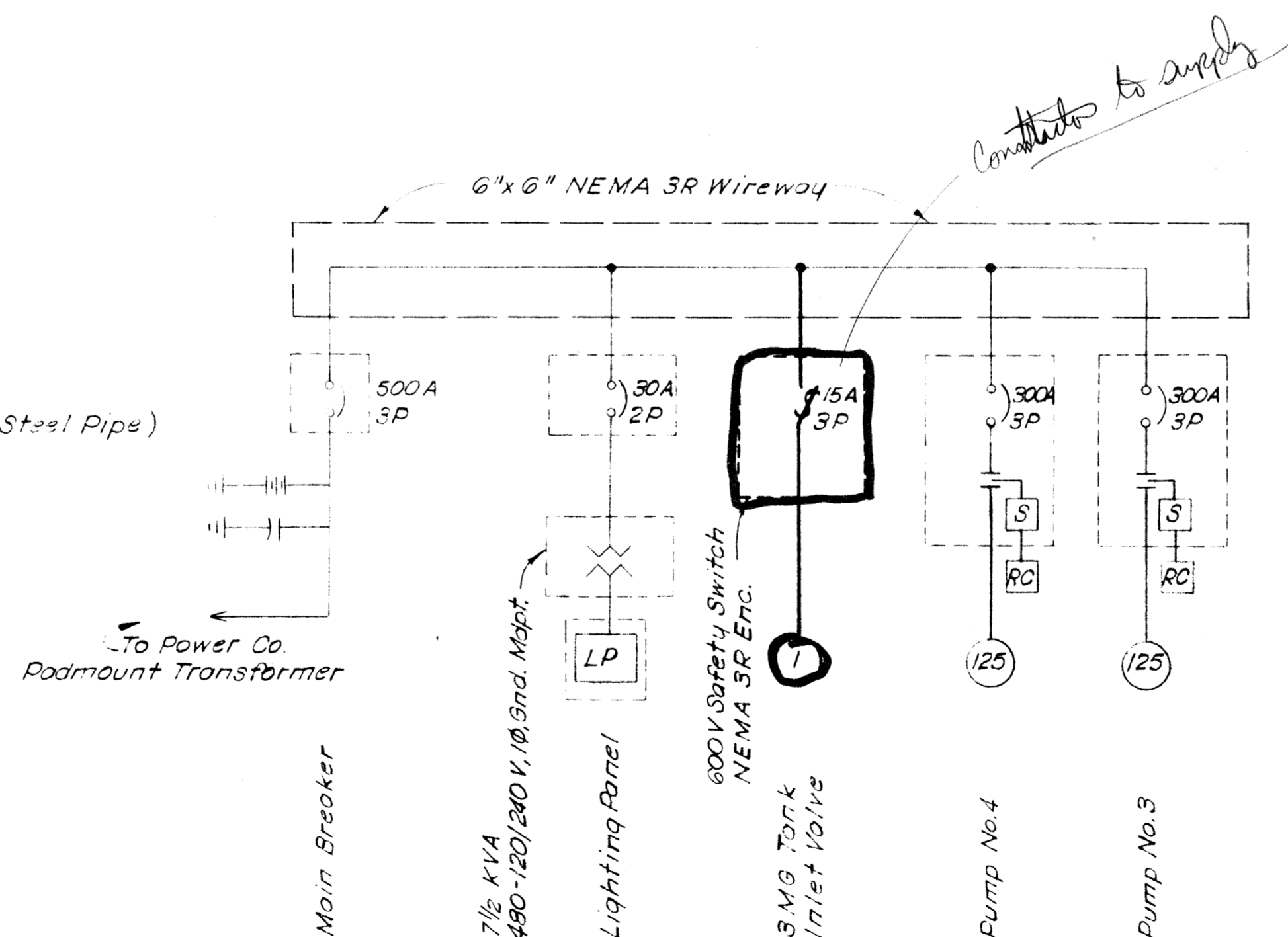
- FE FLOW PRIMARY ELEMENT
- FIR FLOW INDICATING RECORDER
- FQIR FLOW INDICATING RECORDER WITH TOTALIZER
- FIT FLOW INDICATING TRANSMITTER
- LE LEVEL PRIMARY ELEMENT
- LT LEVEL TRANSMITTER
- LIR LEVEL INDICATING RECORDER
- M MOTOR OPERATED VALVE
- CV CHECK VALVE
- FT FLOW TUBE
- 965 DA DIGITAL/ANALOG SCANNING TRANSMITTER FREQUENCY AS INDICATED
- 965 CA DIGITAL/ANALOG SCANNING RECEIVER FREQUENCY AS INDICATED
- ⊖ BACK OF PANEL MOUNTED INSTRUMENT NO. INDICATES PANEL NUMBER
- FIELD MOUNTED INSTRUMENT
- ⊕ FRONT OF PANEL MOUNTED INSTRUMENT NO. INDICATES PANEL NUMBER
- 1- NTMWD INSTRUMENT BUILDING
- 2- ROCKWALL EQUIPMENT BUILDING
- 3- NTMWD WATER TREATMENT PLANT
- \* EXISTING GEI TELEMETRY EQUIPMENT
- WIRING IN CONDUIT UNDERGROUND
- WIRING IN CONDUIT EXPOSED
- /? CONDUIT RUN-NO. OF WIRES AS INDICATED HOT, NEUTRAL, SWITCHLEG



N Nipple Length (Mtg. Flange To Sensor Zero)

- NOTES:
1. Deburr And Remove All Sharp Edges From Inside Of Pipe.
  2. Inside Of Pipe To Have No Weld Penetrations Or Protrusions.

**CLEARWELL TAPE LEVEL TRANSMITTER  
INSTALLATION DETAIL**  
N. T. S.



**ONE LINE DIAGRAM**  
(NEW SHOWN DARKENED)

TELEPHONE NO. 548731

DESIGNED	ROK	JOB NO.	ROK 86803
DRAWN	JCC	DATE	
TRACED		SCALE	AS SHOWN
CHECKED			

DATE	REVISION
------	----------

FRESE AND NICHOLS, INC.  
CONSULTING ENGINEERS  
FORT WORTH-ARLINGTON-AUSTIN, TEXAS

CITY OF ROCKWALL, TEXAS  
HEATH STREET PUMP STATION-3.0 MG GROUND STORAGE TANK ADDITION

ELECTRICAL  
P&ID, SCHEMATIC, ONE LINE & DETAIL

