

CONTROL POINTS (THIS PROJECT)

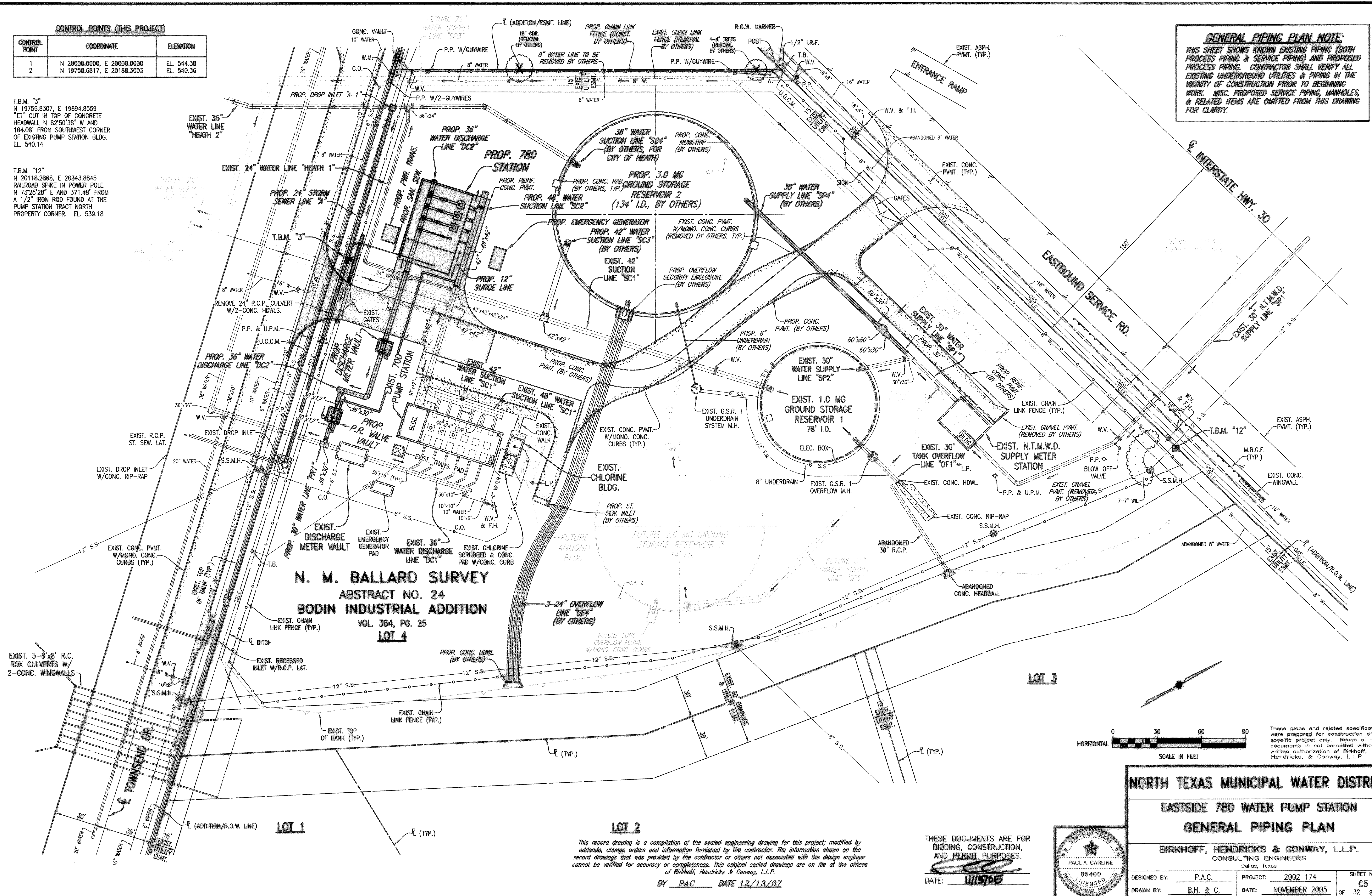
| CONTROL POINT | COORDINATE | ELEVATION |
|---------------|----------------------------|------------|
| 1 | N 20000.0000, E 20000.0000 | EL. 544.38 |
| 2 | N 19758.6817, E 20188.3003 | EL. 540.36 |

T.B.M. "3"
N 19756.8307, E 19894.8559
"□" CUT IN TOP OF CONCRETE
HEADWALL N 82°50'38" W AND
104.08' FROM SOUTHWEST CORNER
OF EXISTING PUMP STATION BLDG.
EL. 540.14

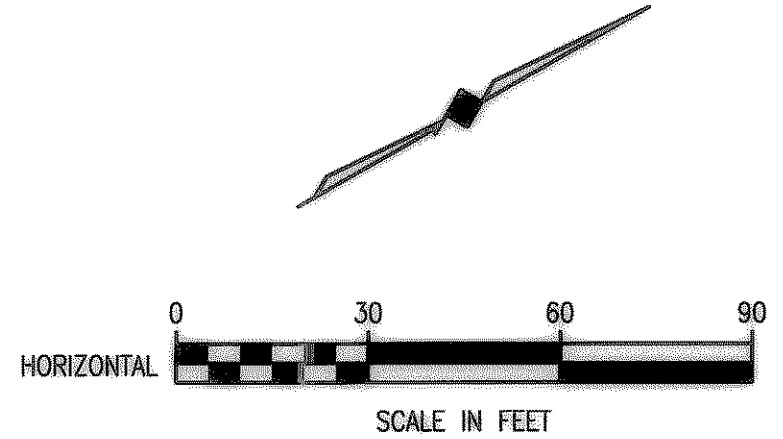
T.B.M. "12"
N 20118.2868, E 20343.8845
RAILROAD SPIKE IN POWER POLE
N 73°25'28" E AND 371.48' FROM
A 1/2" IRON ROD FOUND AT THE
PUMP STATION TRACT NORTH
PROPERTY CORNER. EL. 539.18

GENERAL PIPING PLAN NOTE:
THIS SHEET SHOWS KNOWN EXISTING PIPING (BOTH
PROCESS PIPING & SERVICE PIPING) AND PROPOSED
PROCESS PIPING. CONTRACTOR SHALL VERIFY ALL
EXISTING UNDERGROUND UTILITIES & PIPING IN THE
VICINITY OF CONSTRUCTION PRIOR TO BEGINNING
WORK. MISC. PROPOSED SERVICE PIPING, MANHOLES,
& RELATED ITEMS ARE OMITTED FROM THIS DRAWING
FOR CLARITY.

BLOCKS: 30_TBM_PS_30_PIPING_ALL_GEN_PLAN_NOTE_SITE_PLAN30
REVISED 12/13/07 GAD 2002174005.DWG

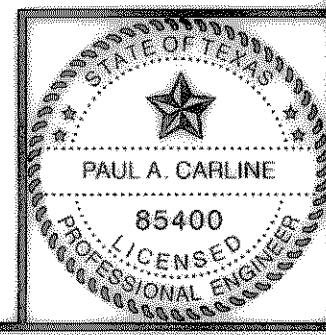


N. M. BALLARD SURVEY
ABSTRACT NO. 24
BODIN INDUSTRIAL ADDITION
VOL. 364, PG. 25
LOT 4



These plans and related specifications were prepared for construction of this specific project only. Reuse of these documents is not permitted without written authorization of Birkhoff, Hendricks, & Conway, L.L.P.

NORTH TEXAS MUNICIPAL WATER DISTRICT
EASTSIDE 780 WATER PUMP STATION
GENERAL PIPING PLAN



BIRKHOFF, HENDRICKS & CONWAY, L.L.P.
CONSULTING ENGINEERS
Dallas, Texas

| | | |
|---------------------|---------------------|--------------|
| DESIGNED BY: P.A.C. | PROJECT: 2002 174 | SHEET NO. C5 |
| DRAWN BY: B.H. & C. | DATE: NOVEMBER 2005 | OF 32 SHEETS |

LOT 2
This record drawing is a compilation of the sealed engineering drawing for this project; modified by addenda, change orders and information furnished by the contractor. The information shown on the record drawings that was provided by the contractor or others not associated with the design engineer cannot be verified for accuracy or completeness. This original sealed drawings are on file at the offices of Birkhoff, Hendricks & Conway, L.L.P.
BY PAC DATE 12/13/07

THESE DOCUMENTS ARE FOR
BIDDING, CONSTRUCTION,
AND PERMIT PURPOSES.
DATE: 11/15/05