

57+89.43 - EDGE OF ROAD - 12' RT., 24' RT.

60+06 - T.U.E. TRANSMISSION LINE (W/METAL TOWERS)

61+28 - T.U.E. TRANSMISSION LINE (W/WOOD POLES)

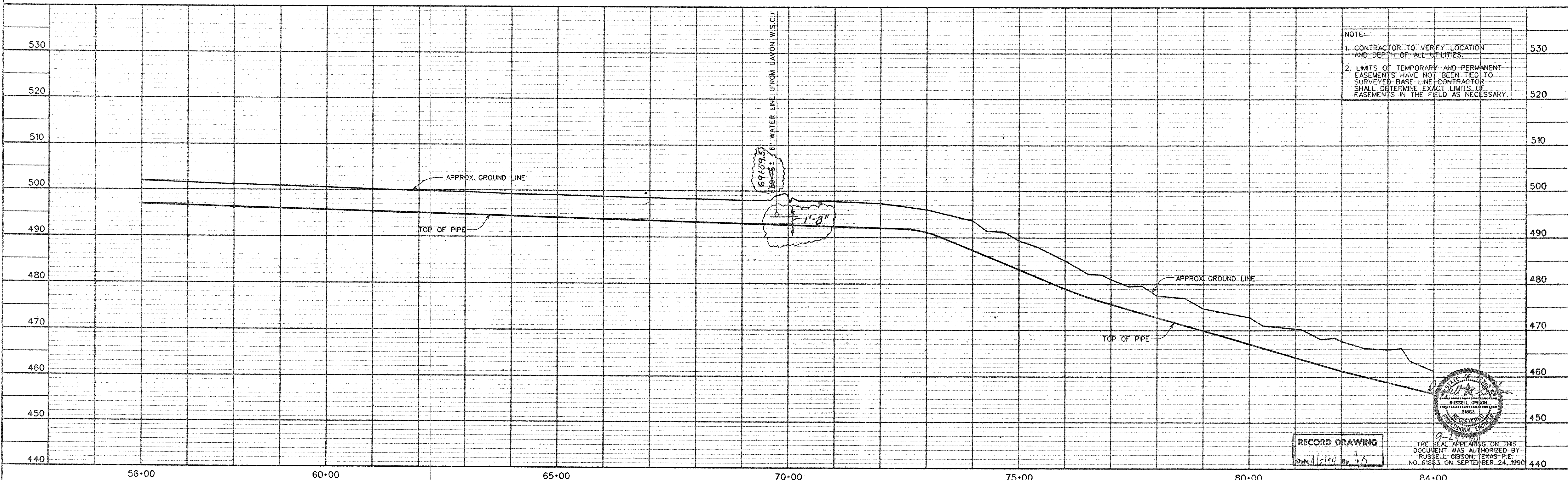
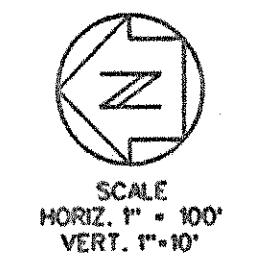
62+51 - T.U.E. TRANSMISSION LINE (W/METAL TOWERS)

67+58.18 - EDGE OF ROAD - 12' RT., 24' RT.

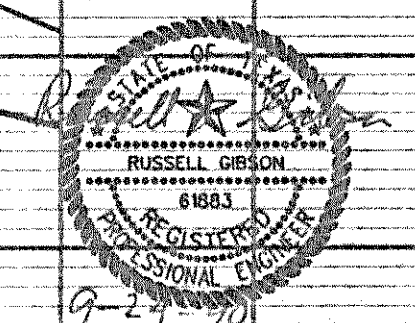
69+70 - EDGE OF ROAD & TURNOUT
 69+70 - 6" WATER LINE (FROM LAYTON W.S.C.)
 69+78 - 2 OVERHEAD FARMERS ELEC. LINES
 69+93 - @ C.R. 483
 69+98 - EDGE OF ROAD
 70+04 - @ DITCH
 70+08 - CROSS-BARBED-WIRE-FENCE, NO FENCE
 70+23.10 - FENCE - 48 RT.

72+73.94 - P.O.T.

83+06 - BARBED WIRE FENCE - 48 RT.
 83+15 - ENTER PASTURE
 83+30 - GARLAND POWER & LIGHT ELEC. LINE
 83+84 - TEX. MUN. POWER & LIGHT ELEC. LINE



RECORD DRAWING
 Date 4/2/94 by J.S.



THE SEAL APPEARING ON THIS DOCUMENT WAS AUTHORIZED BY RUSSELL GIBSON, TEXAS P.E. NO. 61883 ON SEPTEMBER 24, 1990

DESIGNED	R.L.G.	JOB NO.	NTD88047
DRAWN	D.A.N.	DATE	SEP. 1990
TRACED	J.W.G.	SCALE	H. 1"=100'
CHECKED			V. 1"=10'

FREASE AND NICHOLS INC.
 CONSULTING ENGINEERS
 FORT WORTH - ARLINGTON - AUSTIN, TEXAS

NORTH TEXAS MUNICIPAL WATER DISTRICT
 WYLIE - ROCKWALL - FARMERSVILLE PIPELINE

30-INCH PIPELINE
 PLAN AND PROFILE
 STA. 56+00 TO STA. 84+00

SH. 5
 OF 28

US:WSP88047.DWG
 DATE: 09/24/90
 TIME: 11:28:00