

0+00 - BEGIN PROJECT
 0+12 - DITCH
 0+12 - EXIT WOODS
 0+26 - END ϕ 30" C.M.P. - 5' LT.
 0+30 - UNDERGROUND CONTEL CABLE
 0+37 - UNDERGROUND CONTEL CABLE
 0+38 - EDGE OF ROAD
 0+43 - END ϕ 30" C.M.P. - 20' LT.
 0+66 - EDGE OF ROAD
 0+70 - ENTER CULTIVATED FIELD
 1+00 - EDGE OF ROAD - 12' RT., 26' RT.

5+00 - EDGE OF ROAD - 12' RT., 26' RT.

9+71.68 - EDGE OF ROAD - 12' RT., 26' RT.
 9+71.68 - EDGE OF CULTIVATED FIELD - 9' RT.

11+66 - EDGE OF ROAD - 12' RT., 26' RT.
 11+66 - EDGE OF CULTIVATED FIELD - 1' RT.

13+00 - EDGE OF CULTIVATED FIELD - 4' LT.

17+33 - END ϕ 24" C.M.P. - LT. 2', LT. 7' (FL. ELEV. 475.63)
 17+63 - END ϕ 24" C.M.P. - LT. 2', LT. 7' (FL. ELEV. 472.89)
 18+00 - ϕ DITCH - 2' LT. (FL. ELEV. 470.99)

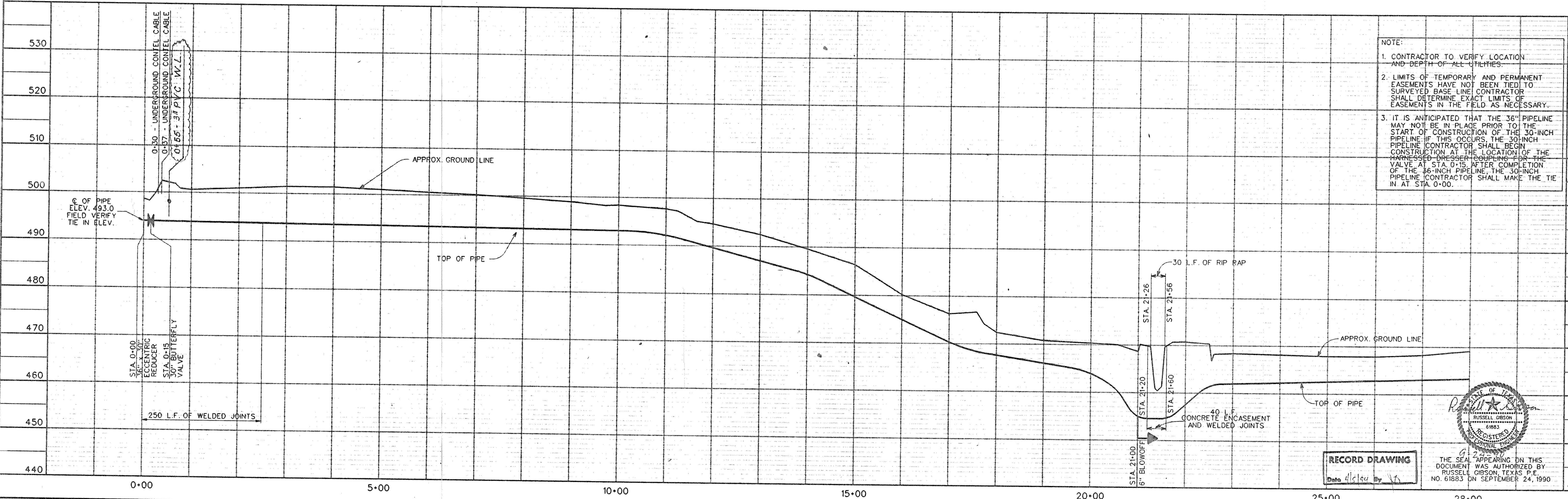
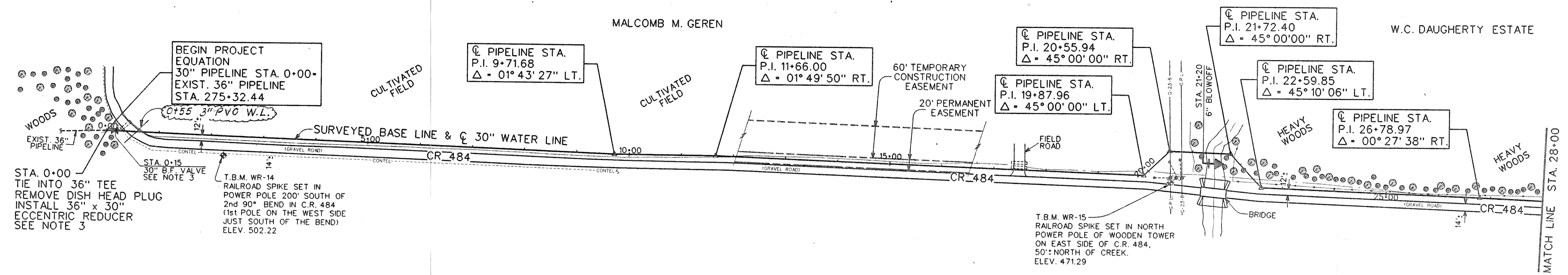
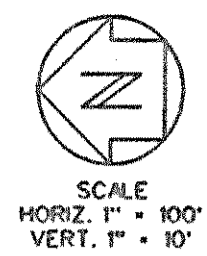
9+00 - ϕ DITCH - 3' LT. FL. ELEV. 469.69
 20+00 - GUY ANCHOR - 17' RT.
 20+02 - ϕ DITCH
 20+56 - GUY ANCHOR - 20' RT.
 20+68 - ϕ HIGH VOLTAGE LINE (G.P. & L.)
 20+78 - GUY ANCHOR - 15' RT.
 20+99 - ϕ DRAIN
 20+99 - ENTER HEAVILY WOODED AREA
 21+41 - ϕ CREEK
 21+56 - HIGH BANK
 21+72+40 - HIGH BANK - 17' LT.
 21+82 - CROSS BARBED WIRE FENCE
 22+48.35 - CROSS BARBED WIRE FENCE
 22+48.35 - EXIT HEAVILY WOODED AREA
 22+57 - ϕ DRAIN
 22+59.85 - FENCE - 9.6' LT.
 22+59.85 - EDGE OF ROAD - 12' RT., 26' RT.

24+00 - FENCE - 11' LT.
 24+00 - ϕ DRAIN - 5' LT.

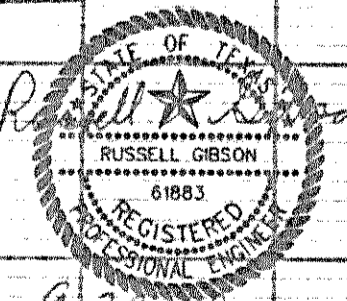
25+75 - FENCE - 3' LT.
 25+75 - BEGIN ϕ DRAIN IN ϕ

26+78.97 - FENCE - 9.4' LT.
 26+78.97 - EDGE OF ROAD - 12' RT., 26' RT.

28+00 - FENCE - 8.70' LT.
 28+00 - END ϕ DRAIN IN ϕ



NOTE:
 1. CONTRACTOR TO VERIFY LOCATION AND DEPTH OF ALL UTILITIES.
 2. LIMITS OF TEMPORARY AND PERMANENT EASEMENTS HAVE NOT BEEN TIED TO SURVEYED BASE LINE. CONTRACTOR SHALL DETERMINE EXACT LIMITS OF EASEMENTS IN THE FIELD AS NECESSARY.
 3. IT IS ANTICIPATED THAT THE 36" PIPELINE MAY NOT BE IN PLACE PRIOR TO THE START OF CONSTRUCTION OF THE 30-INCH PIPELINE. IF THIS OCCURS, THE 30-INCH PIPELINE CONTRACTOR SHALL BEGIN CONSTRUCTION AT THE LOCATION OF THE HARNESS DRESSER COUPLING FOR THE VALVE AT STA. 0+15 AFTER COMPLETION OF THE 36-INCH PIPELINE. THE 30-INCH PIPELINE CONTRACTOR SHALL MAKE THE TIE IN AT STA. 0+00.



RECORD DRAWING
 Date 4/16/04 By J.S.

DESIGNED R.L.G.
 DRAWN D.A.N.
 TRACED J.W.G.
 CHECKED J.W.G.

JOB NO. NTD88047
 DATE SEP. 1990
 SCALE H. 1"=100'
 V. 1"=10'

FREES AND NICHOLS INC.
 CONSULTING ENGINEERS
 FORT WORTH - ARLINGTON - AUSTIN, TEXAS

NORTH TEXAS MUNICIPAL WATER DISTRICT
 WYLIE - ROCKWALL - FARMERSVILLE PIPELINE

30-INCH PIPELINE
 PLAN AND PROFILE
 STA. 00+00 TO STA. 28+00

SH. 3
 OF 28
 CF 88-3