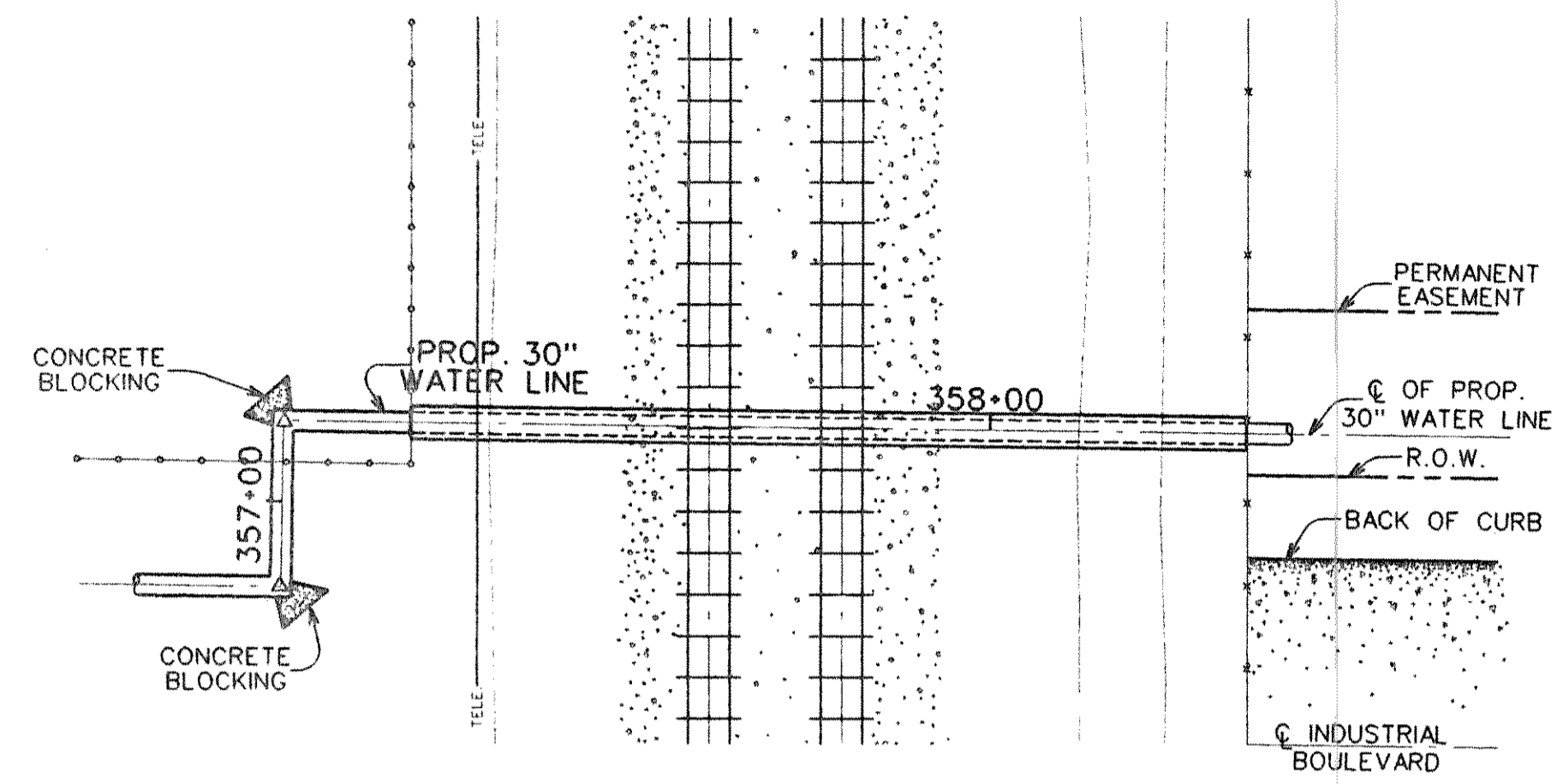


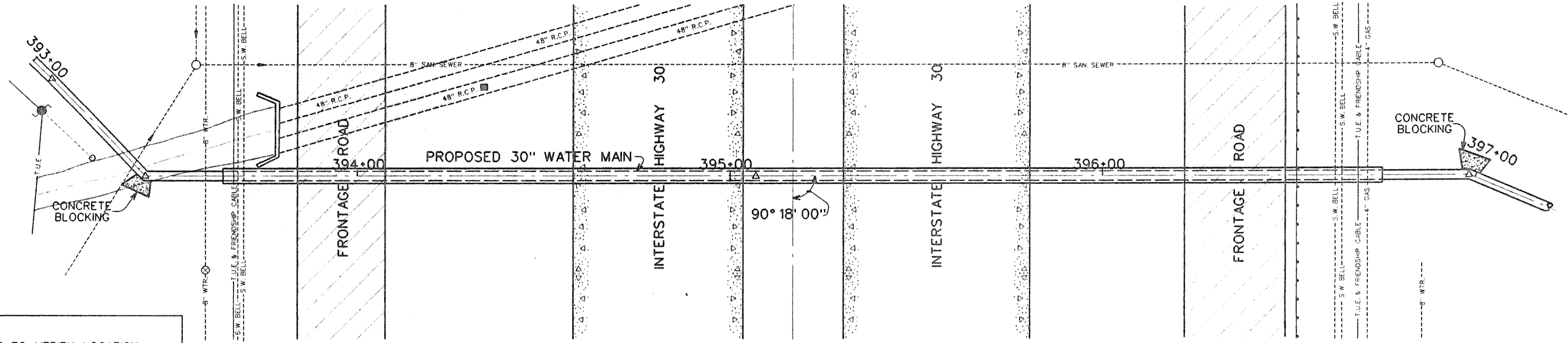
357-04.67 - CROSS CHAIN LINK FENCE  
 357-25 - CROSS CHAIN LINK FENCE AND APPROX. R.O.W.  
 357-25 - R.R. MILE POST - 133' RT.  
 357-33 - MK & T. R.R. TEL. LINE  
 357-35 - TOE OF SLOPE  
 357-51 - TOE OF BALLAST  
 357-55 - TOP OF BALLAST  
 357-61 - E. OF M.K. & T. R.R. TRACKS  
 357-77 - E. OF M.K. & T. R.R. TRACKS  
 357-81 - TOP OF BALLAST  
 357-89 - TOE OF BALLAST  
 358-06 - TOP OF SLOPE  
 358-16 - TOE OF SLOPE  
 358-26 - CROSS BARBED WIRE FENCE AND APPROX. R.O.W.



PLAN - M. K. & T. RAILROAD CROSSING

SCALE - 1" = 20'

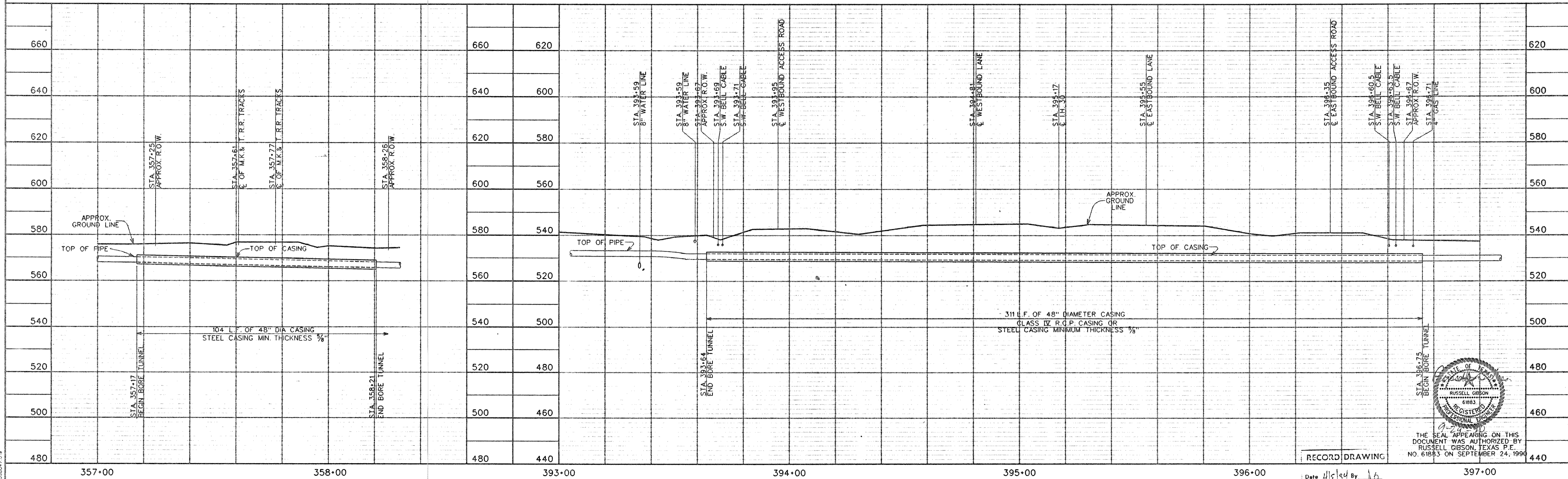
393-00 - T.U.E. LINES - 8' RT.  
 393-12 - POWER POLE - 8' RT.  
 393-30 - GUY ANCHOR - 7' RT.  
 393-35 - 8" SAN. SEWER LINE  
 393-37 - HIGH BANK OF DITCH  
 393-43 - E. OF DITCH  
 393-50 - HIGH BANK OF DITCH  
 393-56 - SAN. SEWER MANHOLE - 30' LT.  
 393-57 - 8" WATER LINE  
 393-59 - WATER VALVE - 26' RT.  
 393-67 - APPROX. R.O.W.  
 393-68 - FRIENDSHIP CABLE T.V. LINE  
 393-68 - T.U.E. LINES  
 393-69 - S.W. BELL CABLE  
 393-70 - E. OF DITCH  
 393-71 - S.W. BELL CABLE  
 393-79 - E. OF HEADWALL - 13' LT.  
 393-84 - EDGE OF ASPHALT PAVEMENT



PLAN - INTERSTATE HIGHWAY 30 CROSSING

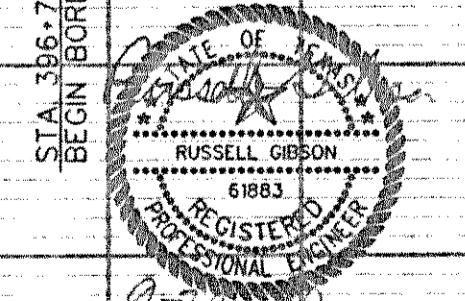
SCALE - 1" = 20'

NOTE:  
 1. CONTRACTOR TO VERIFY LOCATION AND DEPTH OF ALL UTILITIES.  
 2. LIMITS OF TEMPORARY AND PERMANENT EASEMENTS HAVE NOT BEEN TIED TO SURVEYED BASE LINE. CONTRACTOR SHALL DETERMINE EXACT LIMITS OF EASEMENTS IN THE FIELD AS NECESSARY.



RECORD DRAWING

Date *11/5/90* By *LB*



THE SEAL APPEARING ON THIS DOCUMENT WAS AUTHORIZED BY RUSSELL GIBSON, TEXAS P.E. NO. 61883 ON SEPTEMBER 24, 1990

DESIGNED R.L.G.  
 DRAWN D.A.N.  
 TRACED J.W.G.  
 CHECKED J.W.G.  
 JOB NO. NTD88047  
 DATE MARCH 1990  
 SCALE H. 1"=20'  
 V. 1"=20'

**FREES AND NICHOLS INC.**  
 CONSULTING ENGINEERS  
 FORT WORTH - ARLINGTON - AUSTIN, TEXAS

NORTH TEXAS MUNICIPAL WATER DISTRICT  
 WYLIE - ROCKWALL - FARMERSVILLE PIPELINE

30-INCH PIPELINE  
 HIGHWAY CROSSING DETAILS

SH. 19  
 OF 28

N:\DRAWING\NTD88047.DWG