

- 365+16: - SAN SEWER MANHOLE - 13' RT.
- 365+57: - EDGE OF CONCRETE - 15' RT.
- 365+80: - S.D. UNION BOX - 47' RT.
- 365+82: - SAN SEWER MANHOLE - 65' RT.
- 366+18: - EDGE OF CONCRETE - 14' RT.
- 366+20: - END OF 5' BOX CULVERT - 25' RT.
- 366+39: - POWER POLE - 35' RT.
- 366+40: - END CONCRETE APRON - 10' RT.
- 366+65: - GAS MARKER - 16' RT.
- 368+13: - POWER POLE - 12' RT.
- 368+40: - GUY WIRES - 10' RT.
- 368+79: - POWER POLE - 8' RT.
- 369+14: - GAS MARKER - 12' RT.
- 369+22: - S.W. BELL MARKER - 22' RT.
- 369+52: - SAN SEWER - 18' RT.
- 369+52: - (CITY OF ROCKWALL)
- 369+54: - FENCE CORNER - 19' RT.

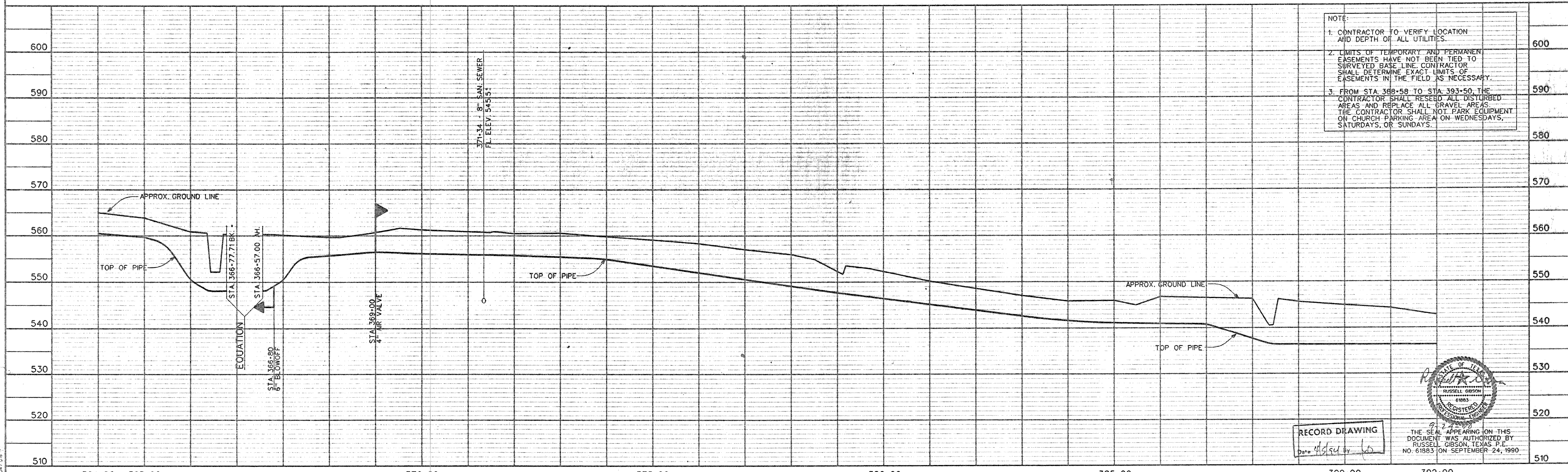
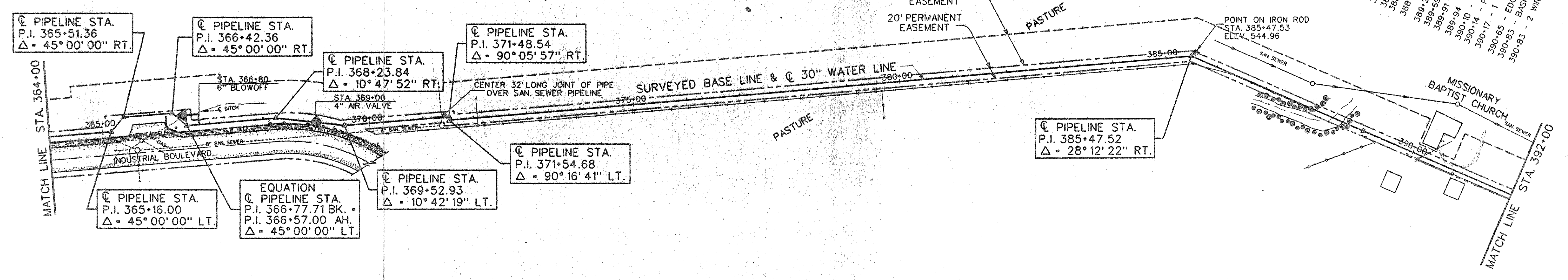
- 371+33: - SAN SEWER MANHOLE - 15' RT.
- (CITY OF ROCKWALL)
- 371+54: - FENCE CORNER - 12' RT.
- 372+08: - CROSS BARBED WIRE FENCE

- 379+64: - BARBED WIRE FENCE - 12' RT.

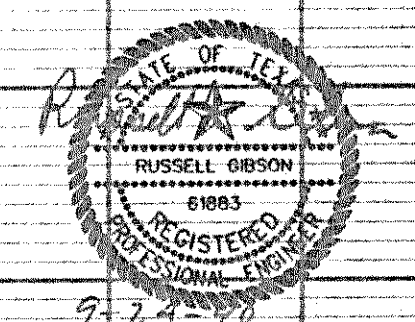
- 385+47: - 1/2" I.R.F. - 12' 2" RT.
- 385+47: - BARBED WIRE FENCE - 12' RT.

- 386+30: - BARBED WIRE FENCE - 1' RT.
- 387+00: - ENTER EDGE OF WOODED AREA
- 387+00: - & DRY DRAIN - 23' RT.
- 387+70: - SAN SEWER MANHOLE - 47' LT.
- 388+00: - BARBED WIRE FENCE - 2' RT.
- 388+02: - HIGH BANK OF DRY DRAIN - 2' RT.
- 388+58: - & OF DRY DRAIN - 18' RT.
- 388+77: - EXIT BANK OF DRY DRAIN
- 388+88: - P.O.T.
- 389+26: - 3/4" I.R.F. AT CHAIN LINK FENCE CORNER - 11.5' RT.
- 389+91: - GUY ANCHOR - 50' RT.
- 390+10: - SAN SEWER MANHOLE - 8' RT.
- 390+14: - CHURCH - 24' 2" LT.
- 390+17: - 1 WIRE T.U.E. SERVICE
- 390+85: - EDGE OF GRAVEL SERVICE
- 390+83: - BASKETBALL GOAL 7' RT.
- 390+83: - 2 WIRE T.U.E. SERVICE - 8' RT.

M.I.F. JOINT VENTURE



- NOTE:
1. CONTRACTOR TO VERIFY LOCATION AND DEPTH OF ALL UTILITIES.
 2. LIMITS OF TEMPORARY AND PERMANENT EASEMENTS HAVE NOT BEEN TIED TO SURVEYED BASE LINE. CONTRACTOR SHALL DETERMINE EXACT LIMITS OF EASEMENTS IN THE FIELD AS NECESSARY.
 3. FROM STA. 388+58 TO STA. 393+50, THE CONTRACTOR SHALL RESEED ALL DISTURBED AREAS AND REPLACE ALL GRAVEL AREAS. THE CONTRACTOR SHALL NOT PARK EQUIPMENT ON CHURCH PARKING AREA ON WEDNESDAYS, SATURDAYS, OR SUNDAYS.



RECORD DRAWING
Date: 9/24/90

THE SEAL APPEARING ON THIS DOCUMENT WAS AUTHORIZED BY RUSSELL GIBSON, TEXAS P.E. NO. 61883 ON SEPTEMBER 24, 1990

DESIGNED	R.L.G.	JOB NO.	NTD88047
DRAWN	D.A.N.	DATE	SEP. 1990
TRACED	J.W.G.	SCALE	H. 1"=100'
CHECKED			V. 1"=10'

FREESE AND NICHOLS INC.
CONSULTING ENGINEERS
FORT WORTH - ARLINGTON - AUSTIN, TEXAS

NORTH TEXAS MUNICIPAL WATER DISTRICT
WYLIE - ROCKWALL - FARMERSVILLE PIPELINE

30-INCH PIPELINE
PLAN AND PROFILE
STA. 364+00 TO STA. 392+00

SH. 16
OF 28

M:\NORTH\88047\NTD88047.DWG