

308+16 - BARBED WIRE FENCE - 3' LT.  
 308+16.7 - TEL. PED. (S.W. BELL) - 4.5' LT.  
 308+25 - CROSS BARBED WIRE FENCE  
 308+30 - S.W. BELL CABLE  
 308+89 - EDGE OF ASPH. (F.M. 1411)  
 309+04 - N.T.M.W.D. 20" WATER LINE  
 309+15 - S.T.M.W.D. 12" WATER LINE  
 309+28 - EDGE OF ASPH. (H. 66)  
 309+75 - S.W. BELL CABLE  
 309+76 - T.U.E. LINE  
 309+76 - BETA CABLE T.V. LINE  
 309+77 - DITCH  
 309+83 - APPROX. R.O.W.  
 309+85 - POWER POLE - 3' LT.  
 309+85 - POWER LINE

316+91.44 - P.O.T.  
 317+33 - T.U.E. TRANSMISSION LINE

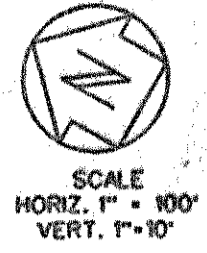
320+05 - DRY DRAIN

322+96 - CROSS BARBED WIRE FENCE

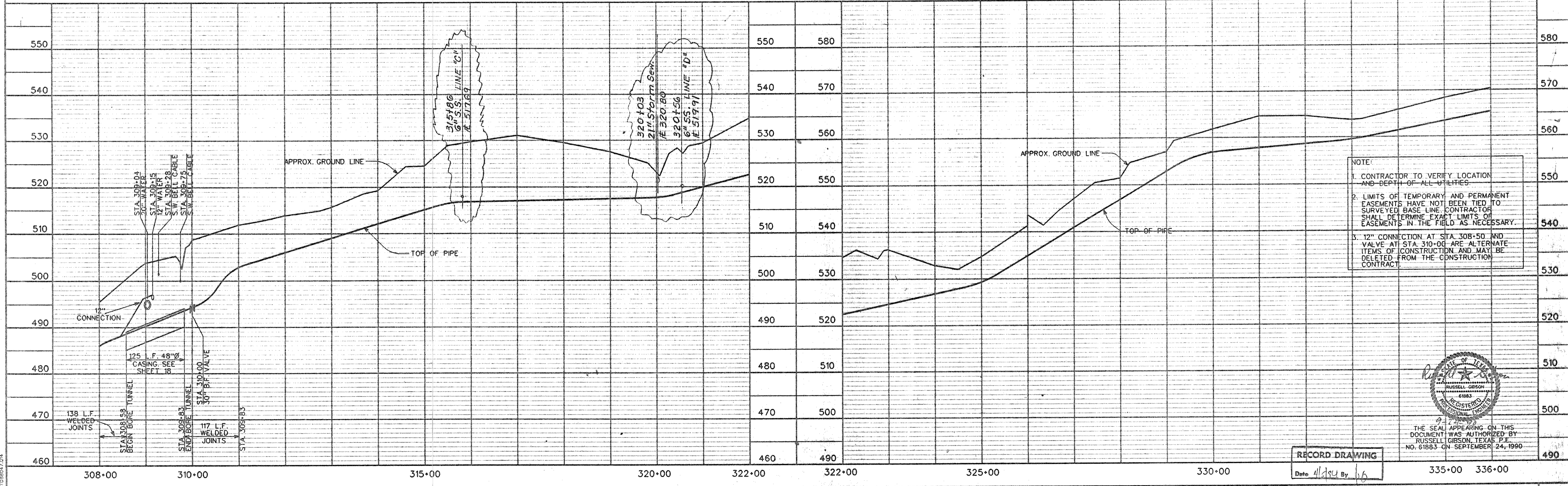
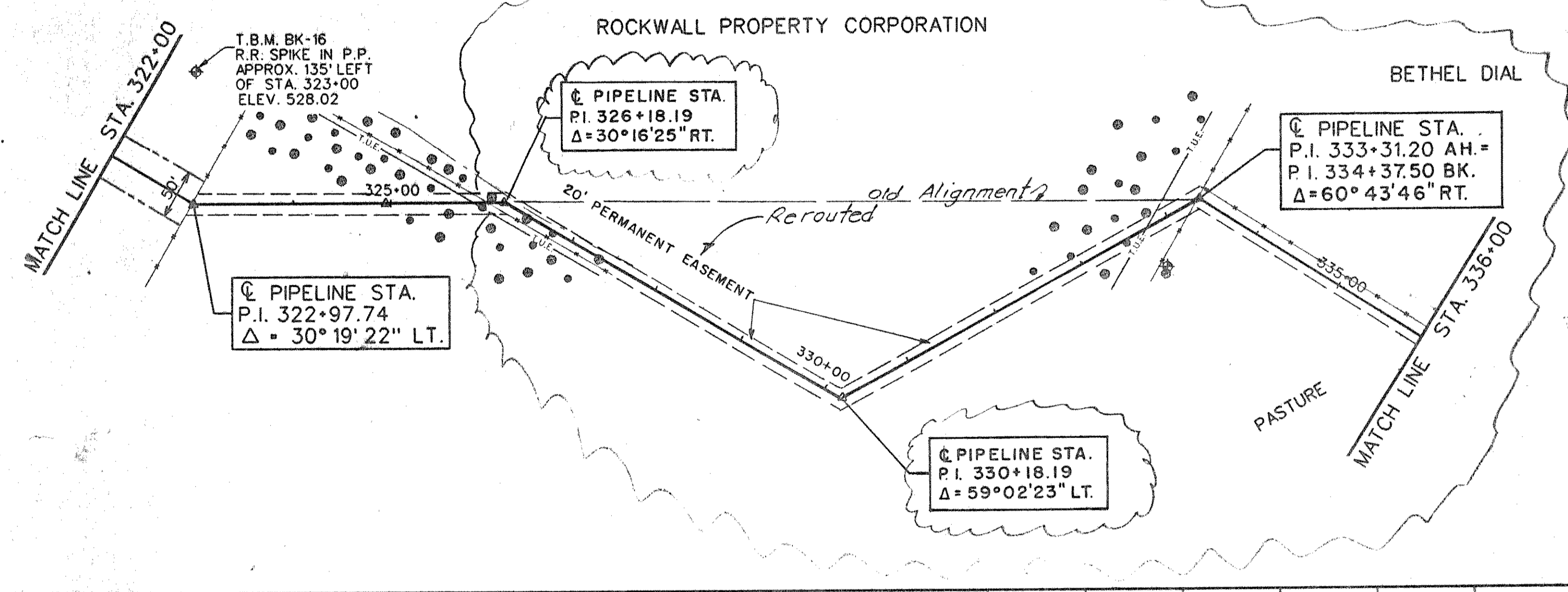
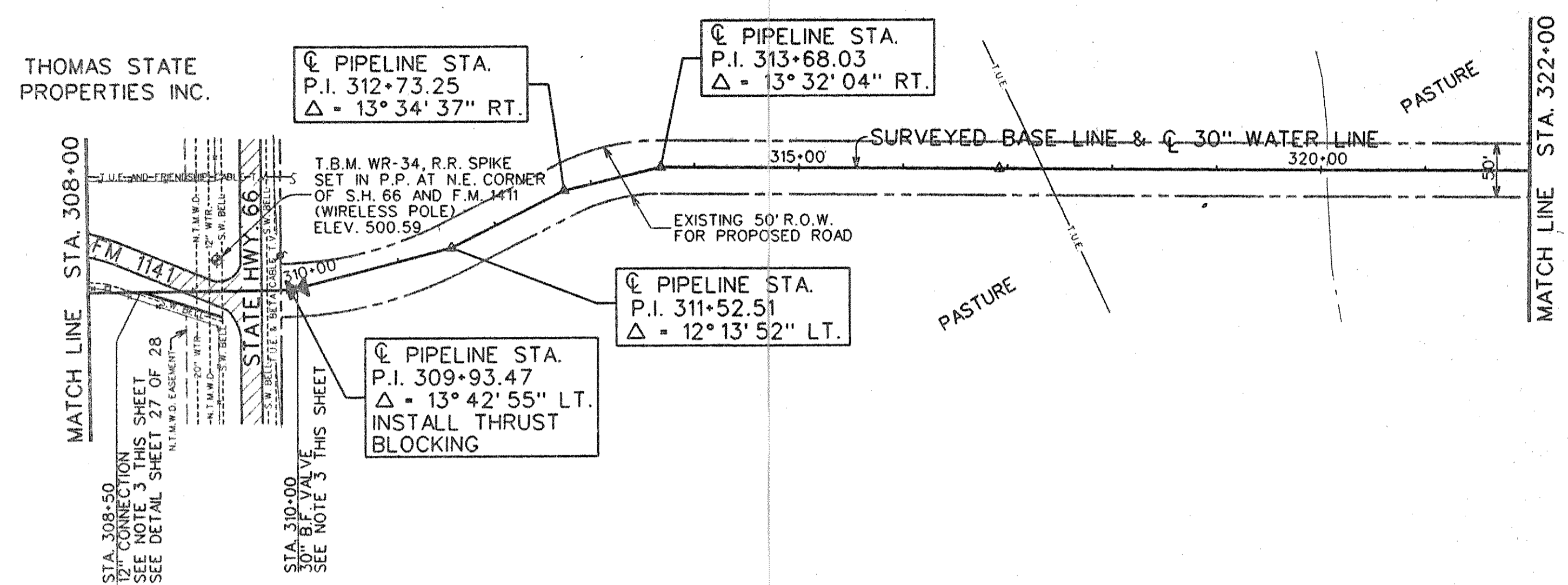
324+68 - ENTER SCATTERED TREES  
 324+95.14 - P.O.T.

**P. Pole 4' RT.**  
 325+88 - 2" T.U.E. LINES  
 326+00 - CROSS BARBED WIRE FENCE  
 326+32 - ENTER PASTURE  
 326+34 - DRY DRAIN

333+31.20 - CROSS BARBED WIRE FENCE  
 333+32 - BARBED WIRE FENCE - 11' LT.



PROPOSED OAK CREEK SUBDIVISION



RECORD DRAWING  
 Date 11/24/90 By JG



THE SEAL APPEARING ON THIS DOCUMENT WAS AUTHORIZED BY RUSSELL GIBSON, TEXAS P.E. NO. 61883 ON SEPTEMBER 24, 1990

DESIGNED R.L.G.  
 DRAWN D.A.N.  
 TRACED DATE  
 CHECKED J.W.G. SCALE

JOB NO. NTD88047  
 DATE SEP. 1990  
 SCALE H. 1"=100'  
 V. 1"=10'

**FREESE AND NICHOLS INC.**  
 CONSULTING ENGINEERS  
 FORT WORTH - ARLINGTON - AUSTIN, TEXAS

NORTH TEXAS MUNICIPAL WATER DISTRICT  
 WYLIE - ROCKWALL - FARMERSVILLE PIPELINE

30-INCH PIPELINE  
 PLAN AND PROFILE  
 STA. 308+00 TO STA. 336+00

CF 88-3  
 SH. 14  
 OF 28