

NO FENCE
 280-23 - ENTER BARBED WIRE FENCE
 280-23 - ENTER PLOWED FIELD

280+88.18 - P.O.T.

285+54.54 - P.O.T.

289+31 - DRAIN TO POND

290+33 - POND - 60' RT.

291+82 - FENCE CORNER - 36' LT.

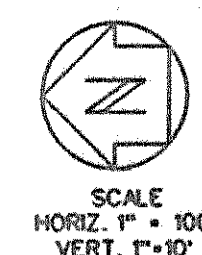
294+26.68 - BARBED WIRE FENCE - 12' LT.
 294+26.68 - EDGE OF ASPH. - 43' LT., 65' LT.

296+06 - ENTER WOODS
 296+21 - HIGH BANK OF CREEK
 296+33 - HIGH BANK OF CREEK
 296+69 - EXIT WOODS

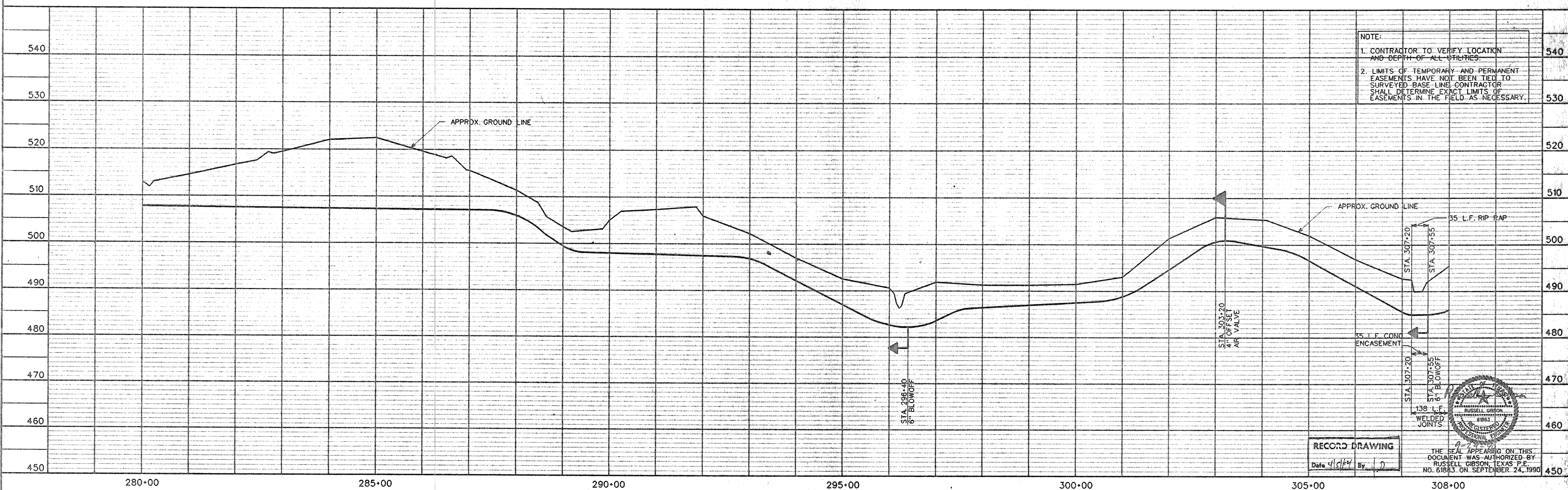
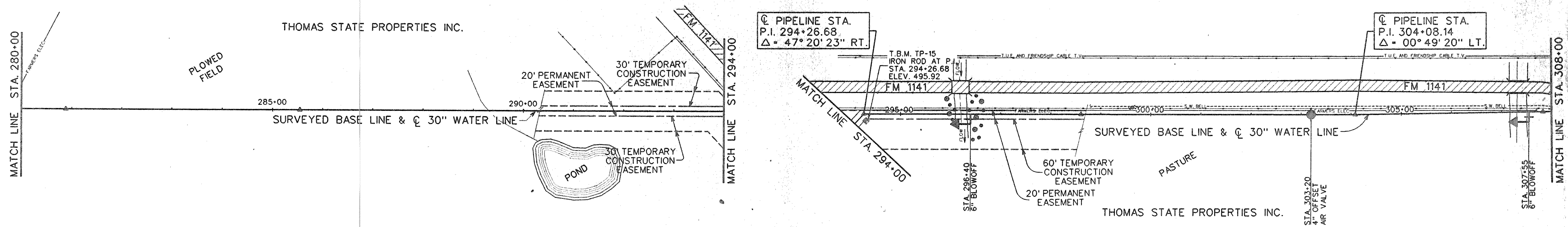
298+60.22 - P.O.T. OF ASPH. - 42.5' LT., 64.5' LT.
 298+60.22 - EDGE OF ASPH. - 47' LT., 69' LT.
 298+60.22 - FARMERS ELEC. LINE - 12' LT.

299+66 - TEL. PED. - 14.5' LT.
 299+66 - POWER POLE - 15' LT.

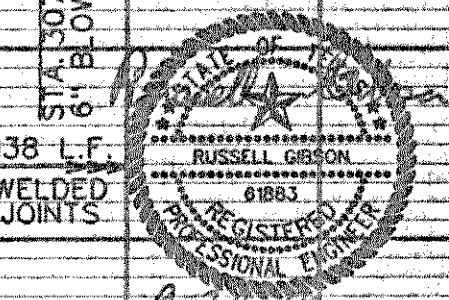
304+08.14 - BARBED WIRE FENCE - 6.5' LT.
 304+08.14 - EDGE OF ASPH. - 47' LT., 69' LT.



307+19 - HIGH BANK OF DRY CREEK
 307+32 - HIGH BANK OF DRY CREEK
 307+54 - HIGH BANK OF DRY CREEK
 307+83.15 - P.O.T.
 307+83.15 - BARBED WIRE FENCE - 6.5' LT., 69' LT.
 307+83.15 - EDGE OF ASPH. - 47' LT., 69' LT.



RECORD DRAWING
 Date 4/12/94 By J.D.



THE SEAL APPEARING ON THIS DOCUMENT WAS AUTHORIZED BY RUSSELL GIBSON, TEXAS P.E. NO. 61883 ON SEPTEMBER 24, 1990

DESIGNED - J.W.G.
 DRAWN - D.A.N.
 TRACED - J.D.W.
 CHECKED - J.D.W.

JOB NO. NTD88047
 DATE SEP. 1990
 SCALE H. 1"=100'
 V. 1"=10'

FREES AND NICHOLS INC.
 CONSULTING ENGINEERS
 FORT WORTH - ARLINGTON - AUSTIN, TEXAS

NORTH TEXAS MUNICIPAL WATER DISTRICT
 WYLIE - ROCKWALL - FARMERSVILLE PIPELINE

30-INCH PIPELINE
 PLAN AND PROFILE
 STA. 280+00 TO STA. 308+00

SH. 13
 OF 28