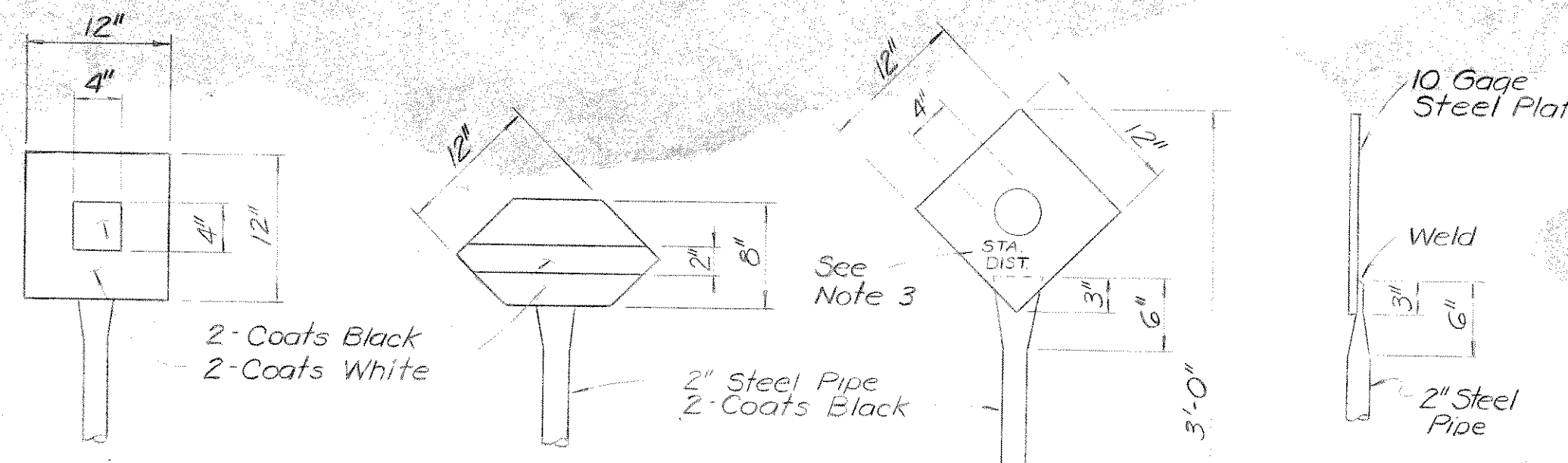


TYPICAL PIPE WALL SECTION

No Scale



BLOW-OFF VALVE

BUTTERFLY & OUTLET VALVE

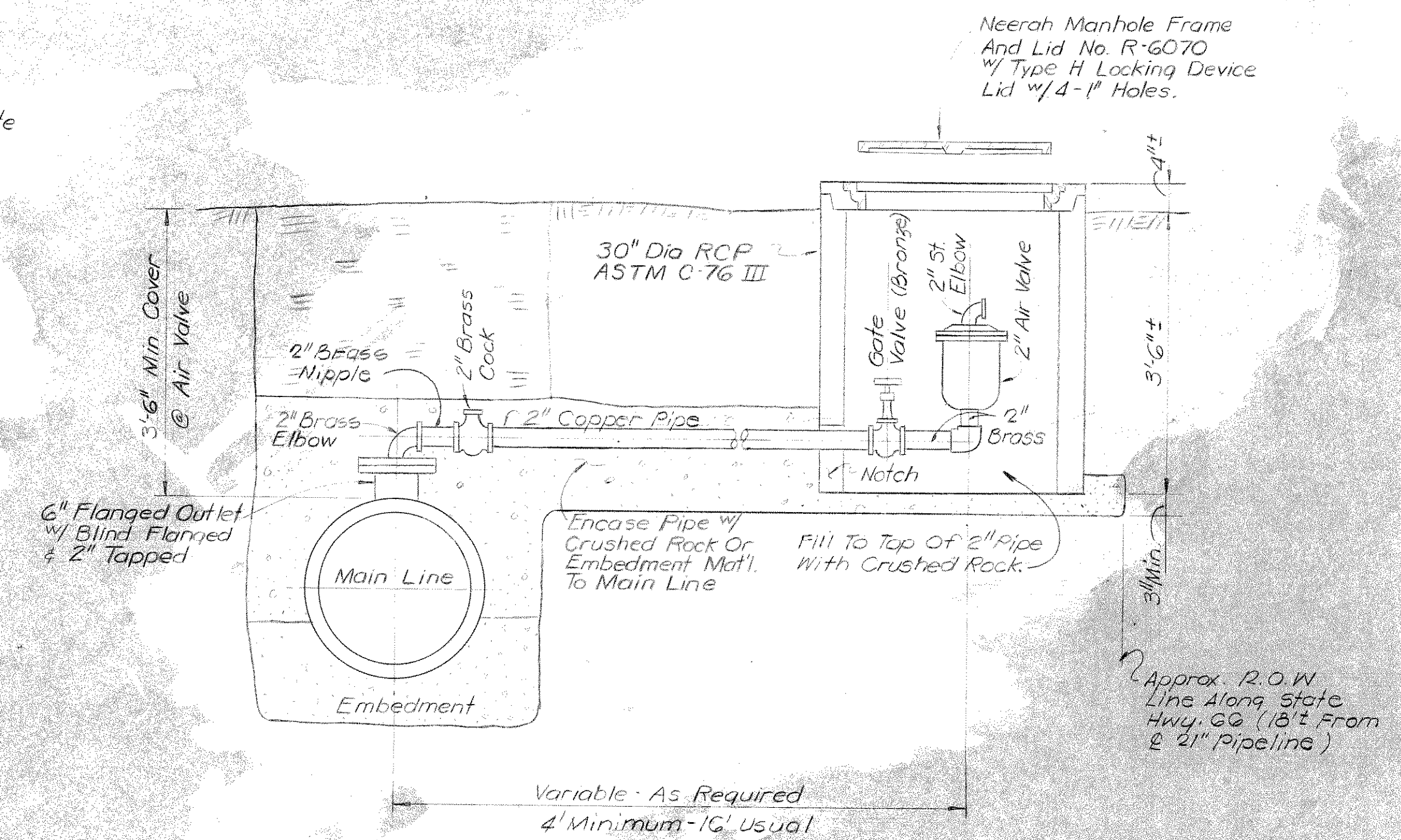
SIDE VIEW

AIR & VACUUM RELEASE VALVE

- Notes:
1. Markers Shall Be Placed At All Required Appurtenances.
 2. Symbol Shall Be Painted On Both Sides Of Marker Letters Shall Be Stamped On A 1 1/2" x 5" x 1/8" Copper Plate & Rivet Plate To Marker.
 3. Location Of Marker (Sta., Distance And Direction From 1/2 Of Pipe) To Be Stamped In Field After Marker Is In Place.
 4. The Price Of The Marker Shall Be Included In The Unit Price For The Appurtenance Being Marked

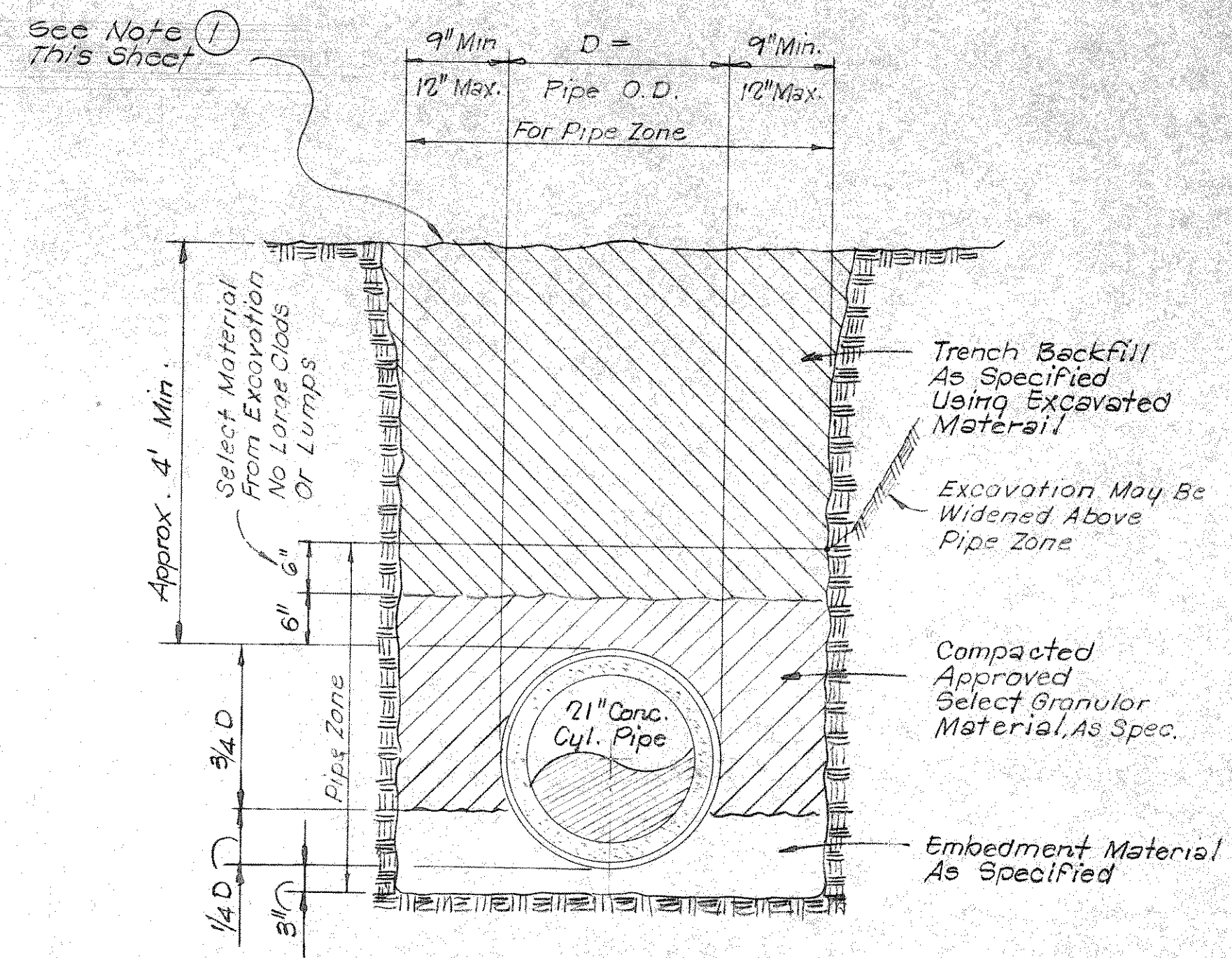
STANDARD MARKER DETAILS

Scale: 1" = 1'-0"



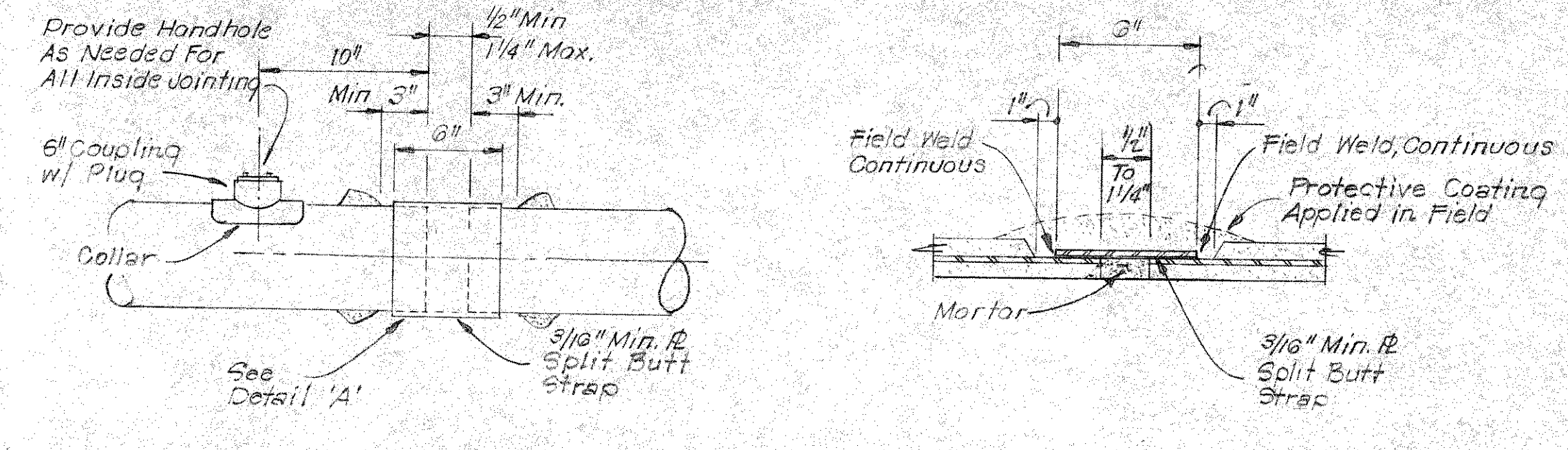
TYPICAL - AIR & VACUUM RELEASE VALVE OFFSET INSTALLATION

Scale: 3/4" = 1'-0"



TYPICAL TRENCH SECTION

Scale 3/4" = 1'-0"

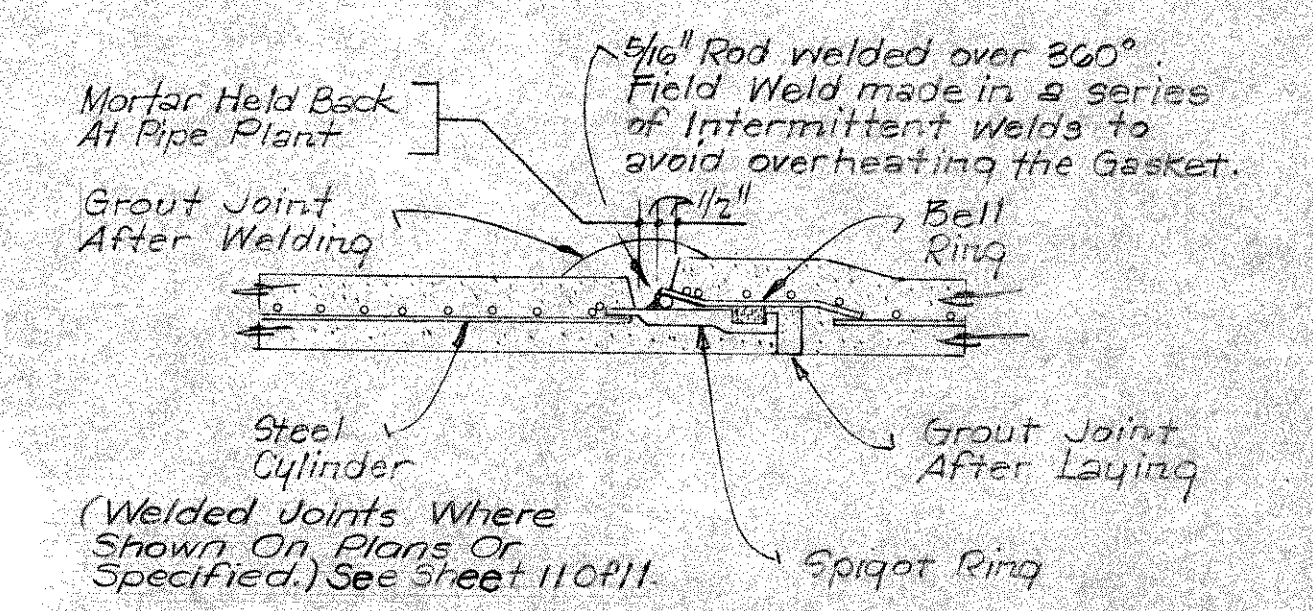


ELEVATION

DETAIL 'A'

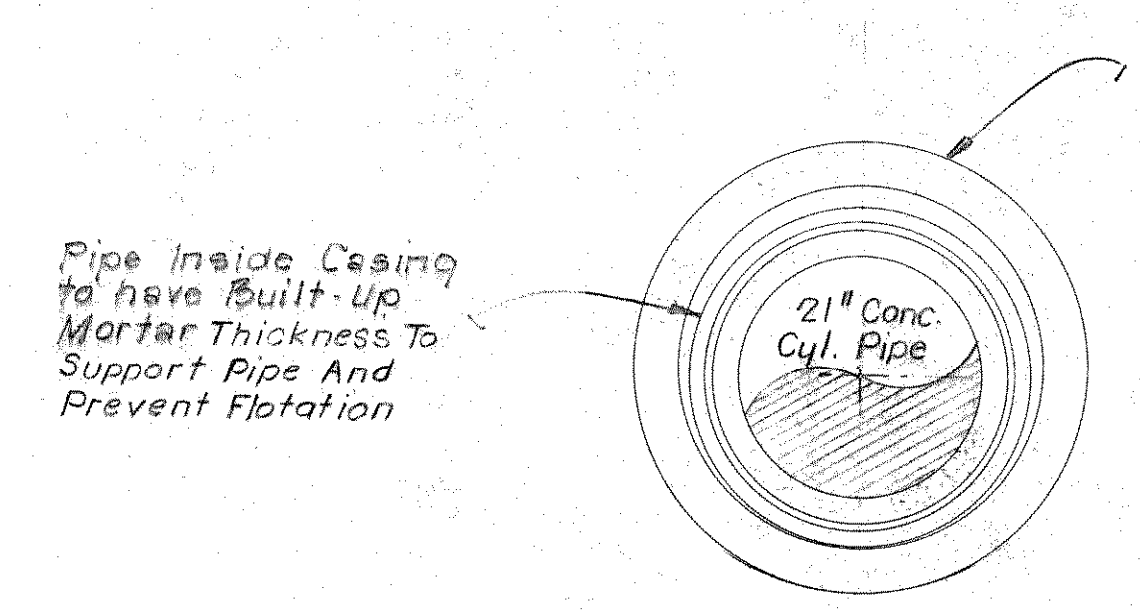
TYPICAL PIPE CLOSURE DETAILS, 21" & 12" PIPE

No Scale



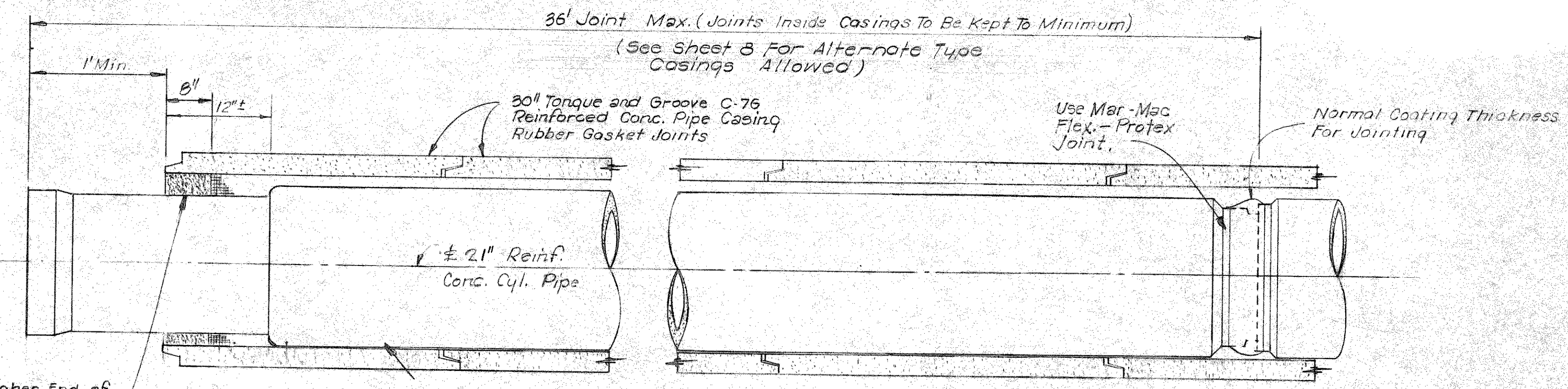
WELDED TYPE JOINT

No Scale



END VIEW

Scale 3/4" = 1'-0"



TYPICAL INSTALLATION IN CASING

No Scale

- NOTE: Where Shown On Plans In Heath Street, Across Gravel Roads And Across Private Asphalt Driveways, Top 12-Inches Of Backfill Shall Be Embedment Material. Payment To Be At Unit Price Bid With Measurement Based On Six (6') Foot Width.
- Where Not In Traffic Areas The 12" Of Backfill Shall Be Top Soil.

