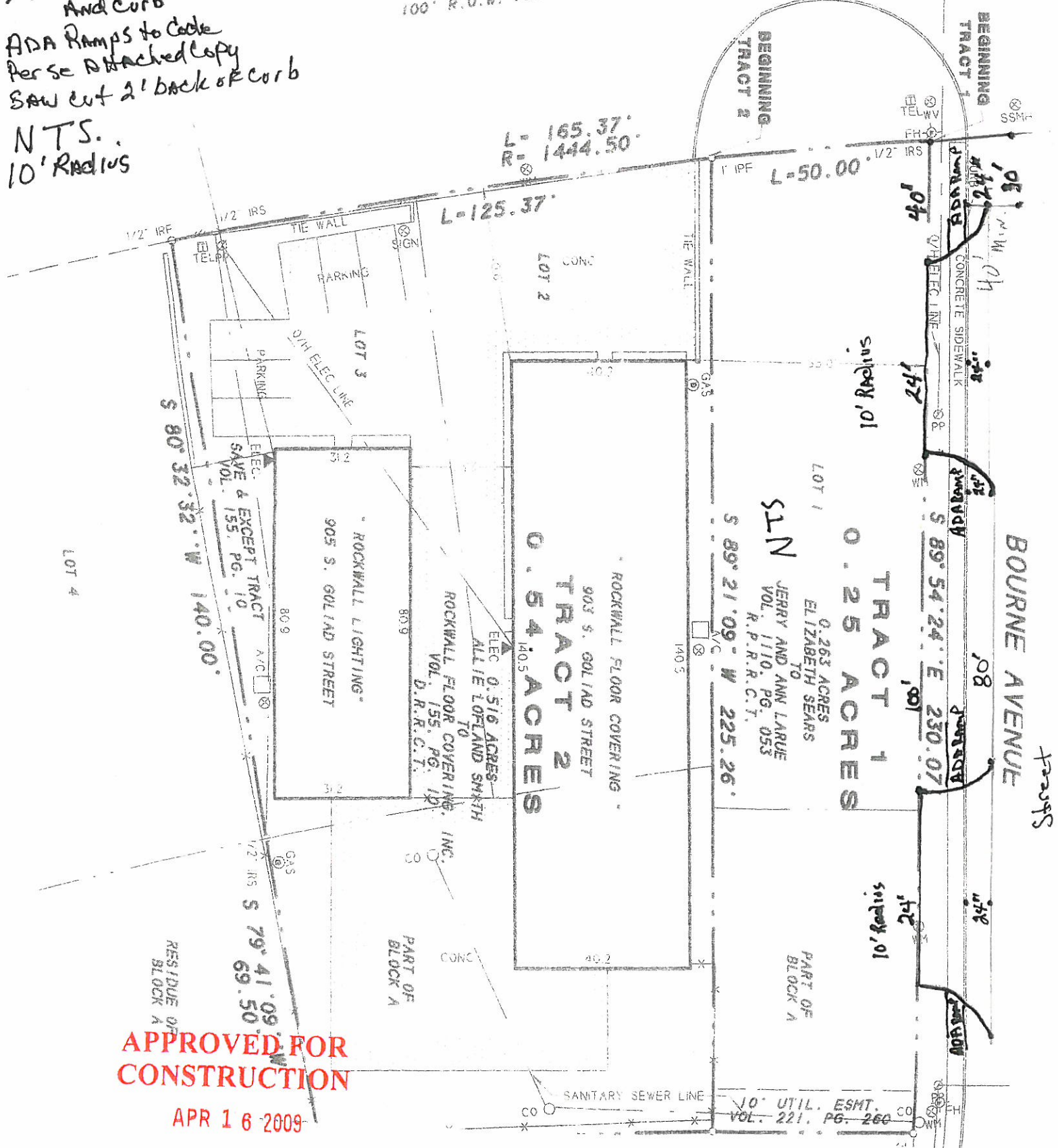


Detail  
 # 3 Prebreach way  
 @ 18" on Ctr  
 3/4" Dowells at Street (12" c-c)  
 And Curb  
 ADA Ramps to Curb  
 Per se Attached Copy  
 Saw cut 2' back of curb  
 N.T.S.  
 10' Radius

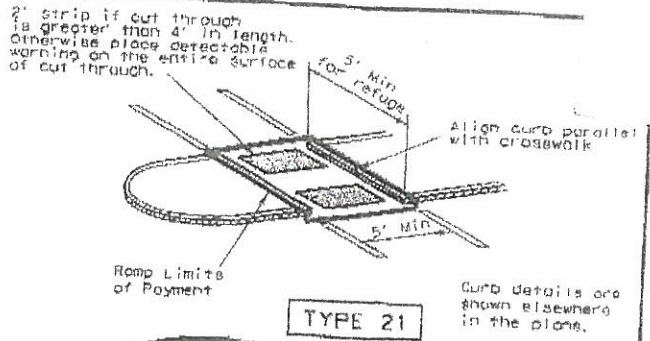
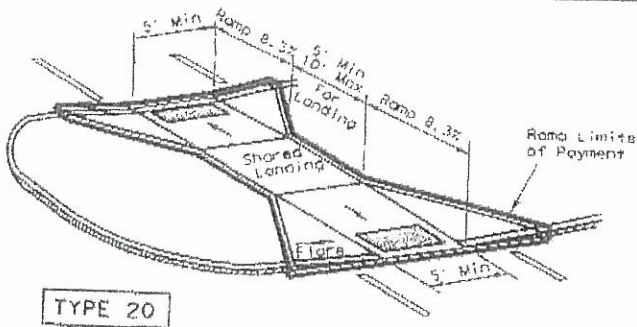
STATE HIGHWAY 200  
 GOLIAD STREET  
 100' R.O.W. PER PLAT



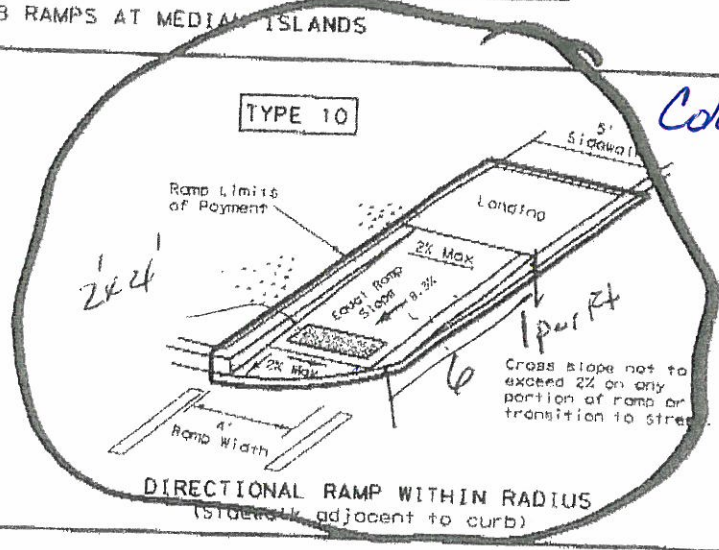
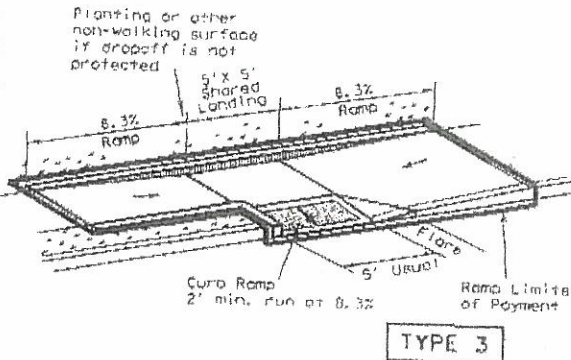
**APPROVED FOR CONSTRUCTION**

APR 16 2009

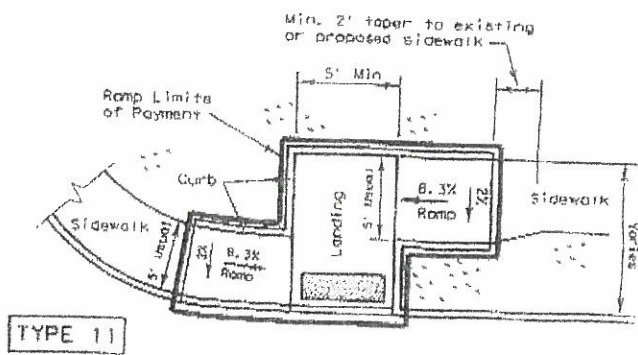
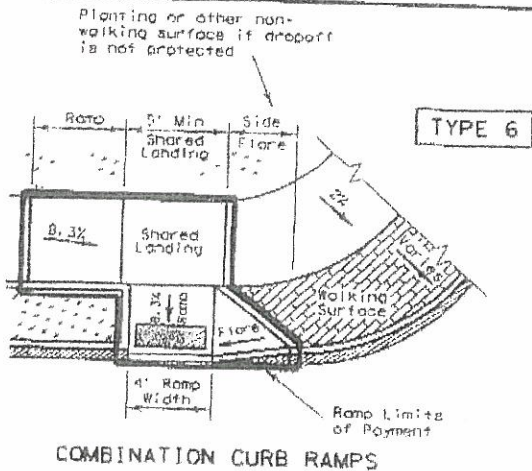
City of Rockwall Engineering Dept.  
 City Engineer: CAJ



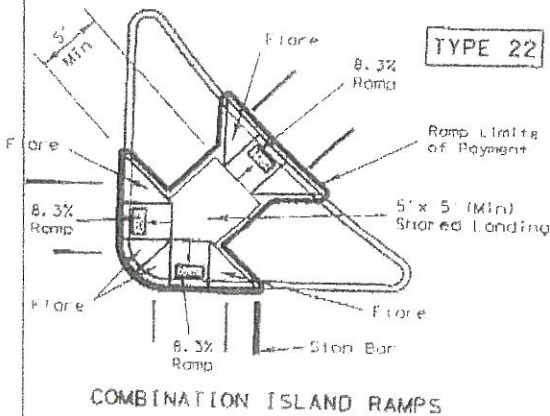
CURB RAMPS AT MEDIAN ISLANDS



*Colonial Red*



OFFSET PARALLEL CURB RAMP



NOTES:  
 See General Notes on sheet 2 of 4 for more information.  
 \* Denotes planting or non-walking surface.

Texas Department of Transportation  
 Design Division (Roadway)

**PEDESTRIAN FACILITIES  
 CURB RAMPS**

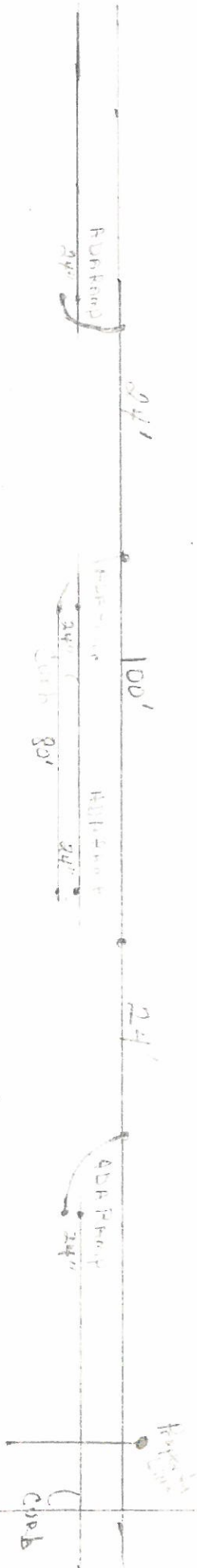
PED-05

FILED	ped05.dgn	DATE	NOV 15 2008	SHEET	05
© TXDOT March 2002		DIST	FEDERAL AID PROJECT	PROJECT	
REVISIONS		COMET	CONTROL	SECT	JOB
					HIGHWAY

**APPROVED FOR CONSTRUCTION**

*Armor Tile*

BOVINE STREET



**APPROVED FOR  
CONSTRUCTION**

APR 16 2009

City of Rockwall Engineering Dept.  
City Engineer: \_\_\_\_\_

State Hwy 205