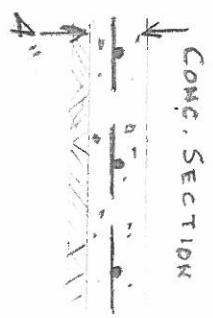
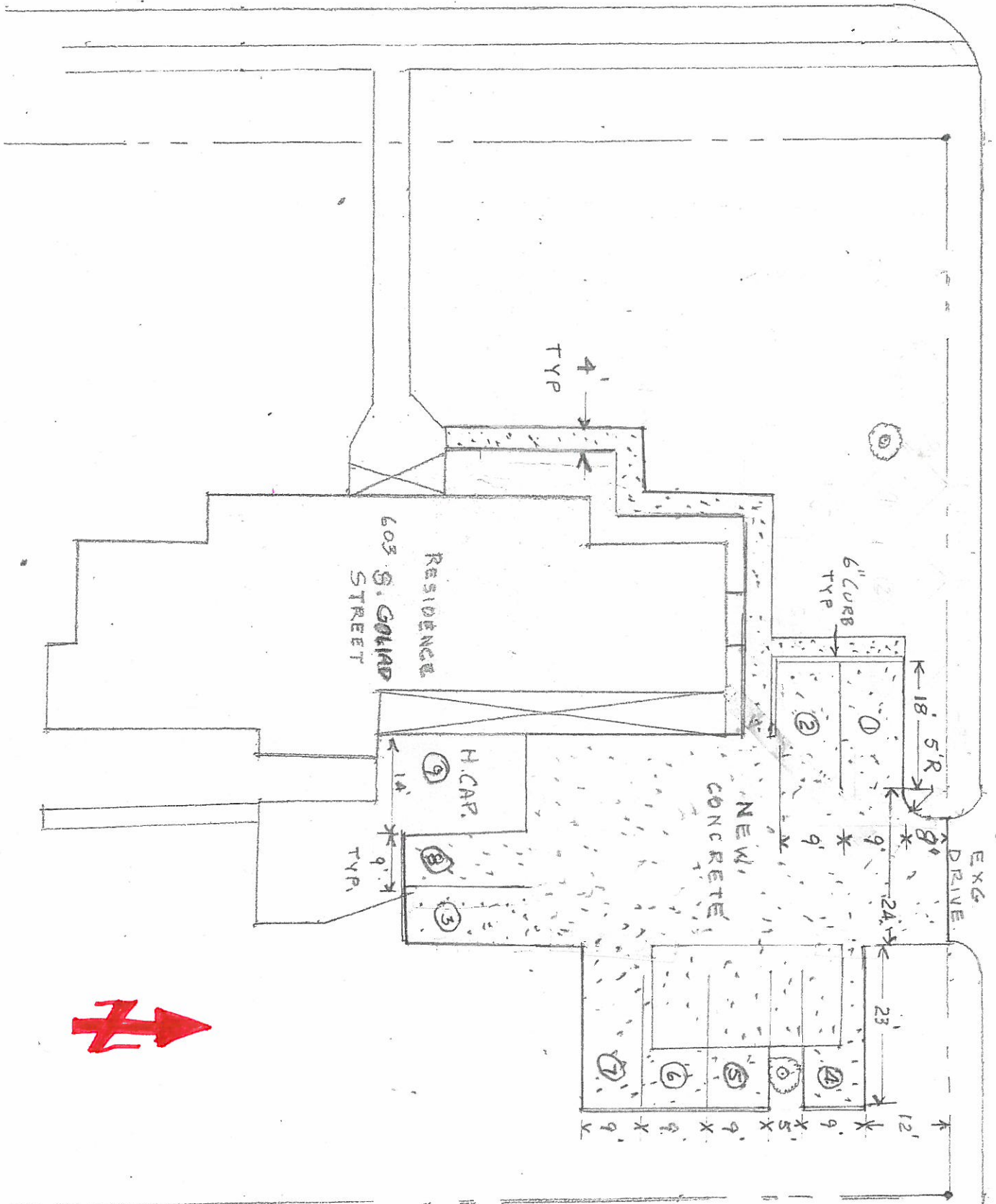


GOLIAD STREET

ST. MARY'S STREET



- 3000 PSI CONG.
- #3 - 16" O.C. EW
- DOWEL INTO EXG. CONG.

7/25/08  
 OK  
 C4T  
 (Recommend min. 5" concrete)

NEW CONCRETE  
 TREND PERSONNEL

1" = 20'